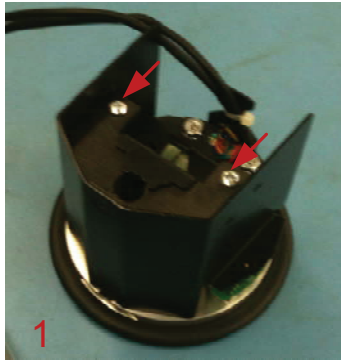


# Mechanical Installation Instructions

## To Install Video Cable:

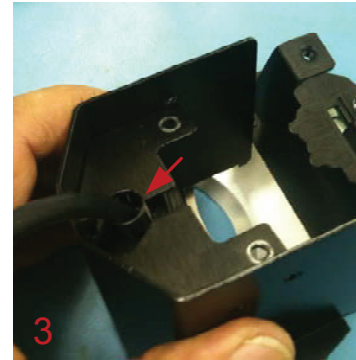
Remove the 2 Silver Screws



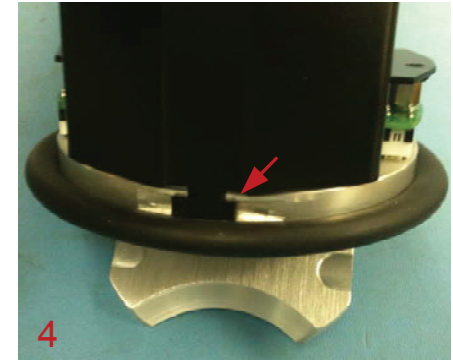
Remove the Front Cable Cover



Slip Grommet Over Cable with the Rounded Side Facing the Connector, then Snap Grommet into the Hole Provided



Replace Cable Cover by Slipping the Cable Cover Tab into the Milled Slot in the Top Cover. Replace 2 Screws from Step 1



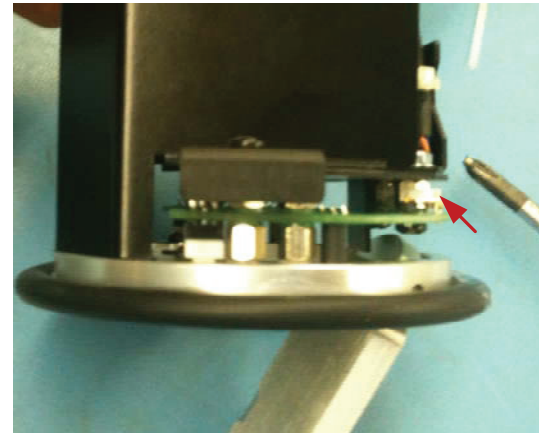
## To Install Table Box:

Remove Rubber Edge Protector from Top Cover  
Install 2 Right Angle Brackets into the Open Hole Marked Using the Provided Black Screws



## LED Brightness Jumper:

LEDs are Designed for 5 to 12 Volt Operation  
Remove Jumper for 12 Volt or Dimmer Operation



6

5

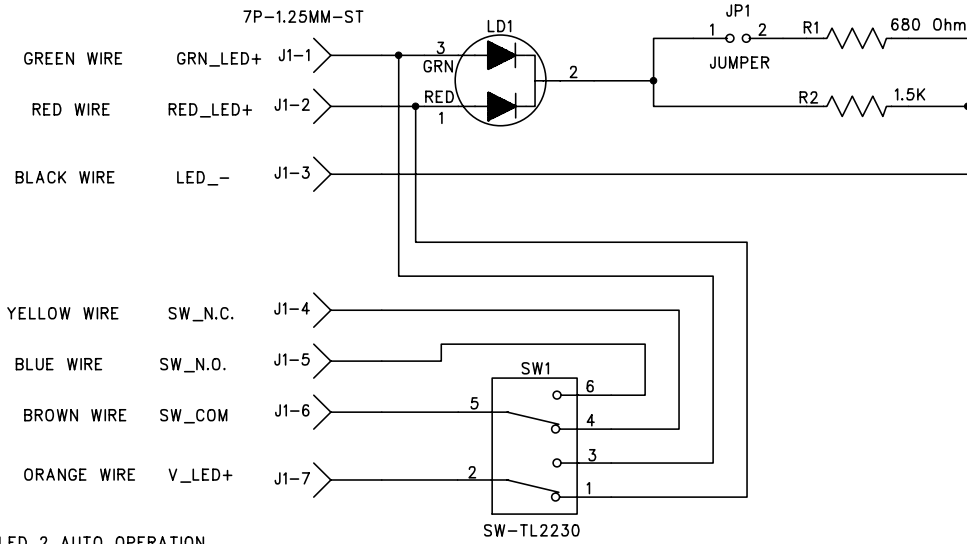
4

3

2

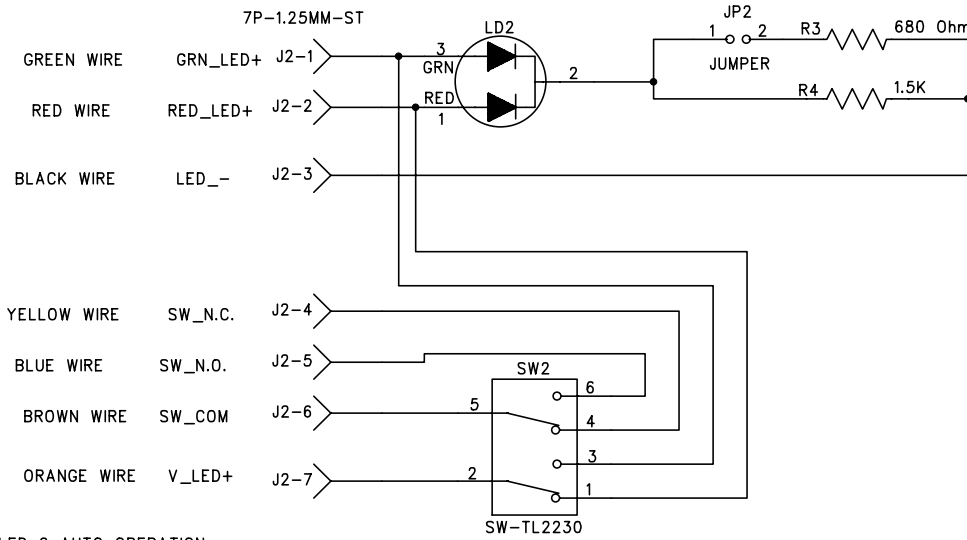
1

REVISION RECORD			
LTR	ECO NO:	APPROVED:	DATE:



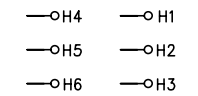
INSTALL JUMPER FOR 5 VOLT LED  
REMOVE FOR 12 VOLT LED

FOR LED 2 AUTO OPERATION  
OMIT WIRES TO PADS 1+2, INSTALL WIRE TO PAD 7



INSTALL JUMPER FOR 5 VOLT LED  
REMOVE FOR 12 VOLT LED

FOR LED 2 AUTO OPERATION  
OMIT WIRES TO PADS 1+2, INSTALL WIRE TO PAD 7



<b>FSR inc.</b> 244 BERGEN Blvd. Woodland Park, NJ 07424 Tel. : (973) 785-4347		The drawing and specifications, herein are the property of FSR Inc. and shall not be reproduced or copied or used in whole or in part as the basis for the manufacture or sale of items without written permission.	
PCB NO.: 26681	PCA# 36072-4	TITLE: T3-PC1 WITH SWITCH & LED	
DRAWN: A.B.	DATED: 4-12-2011	DRAWING NO: T3-PC1-LED REV: -	
CHECKED:	DATED:	SIZE: B	SHEET: 1 OF 1
RELEASED:	DATED:	SCALE:	