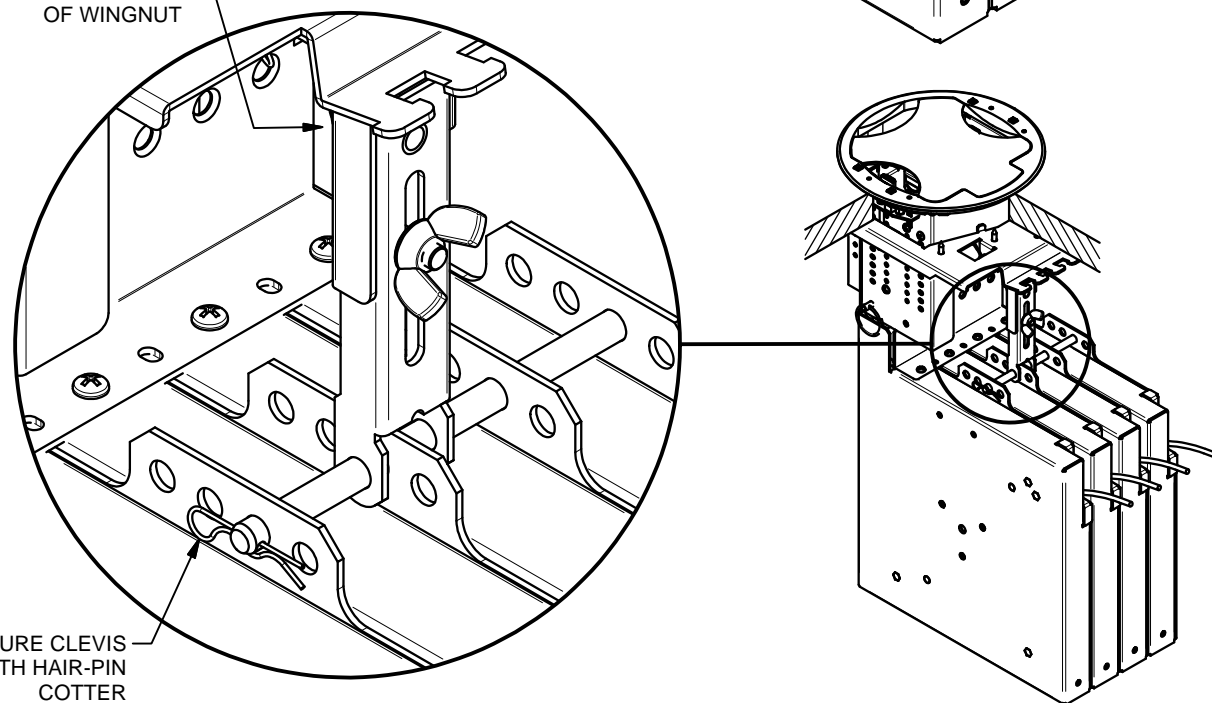
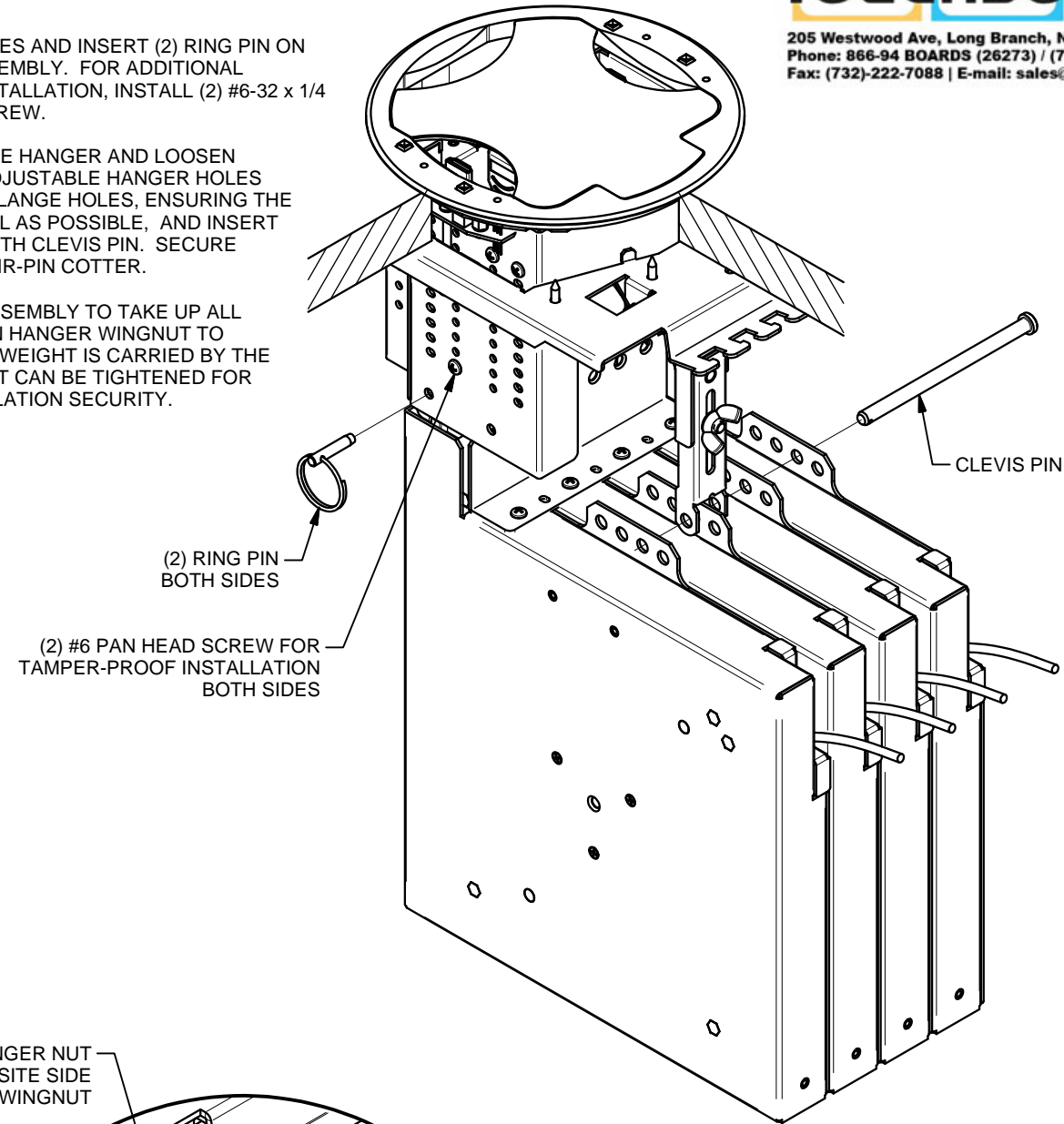
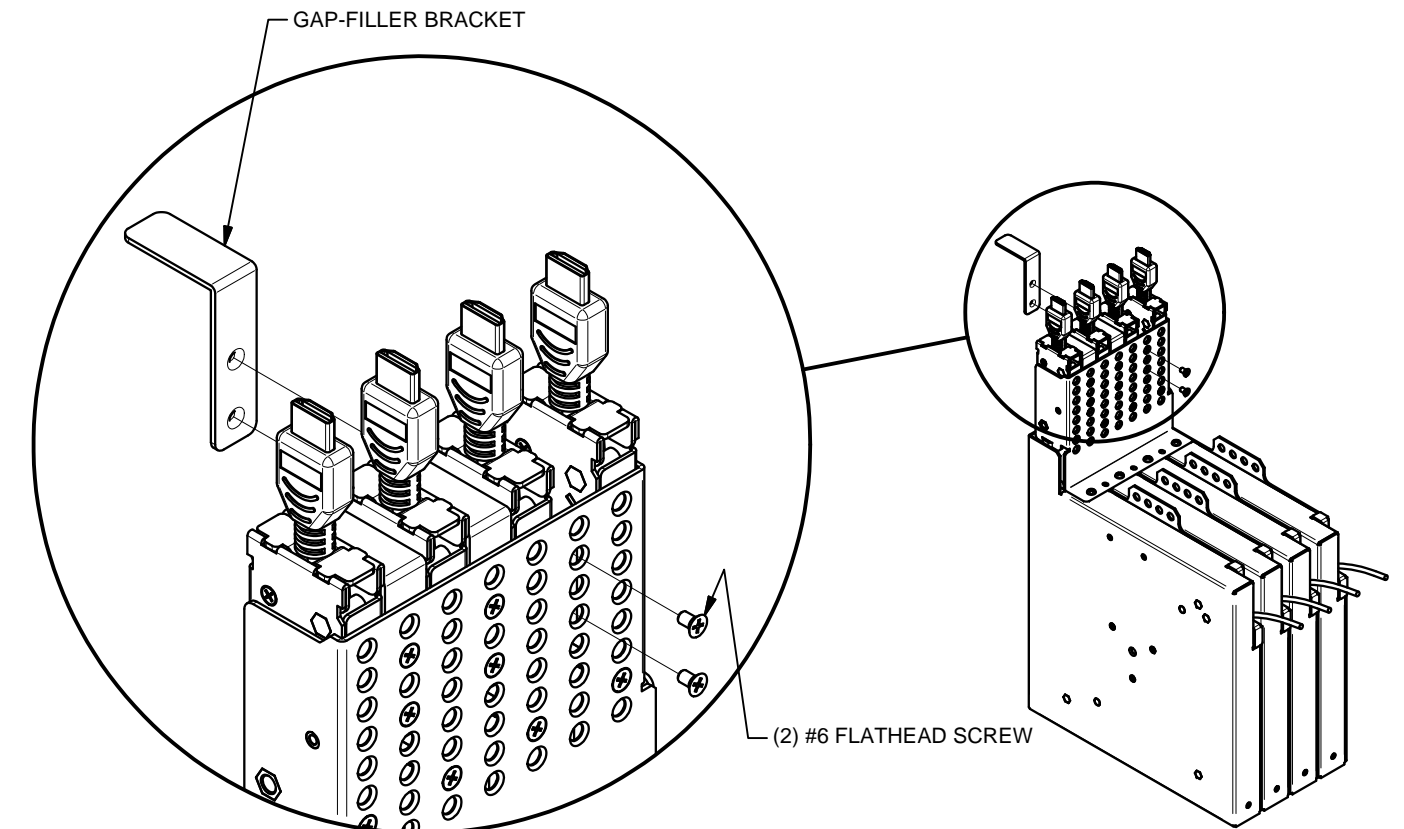
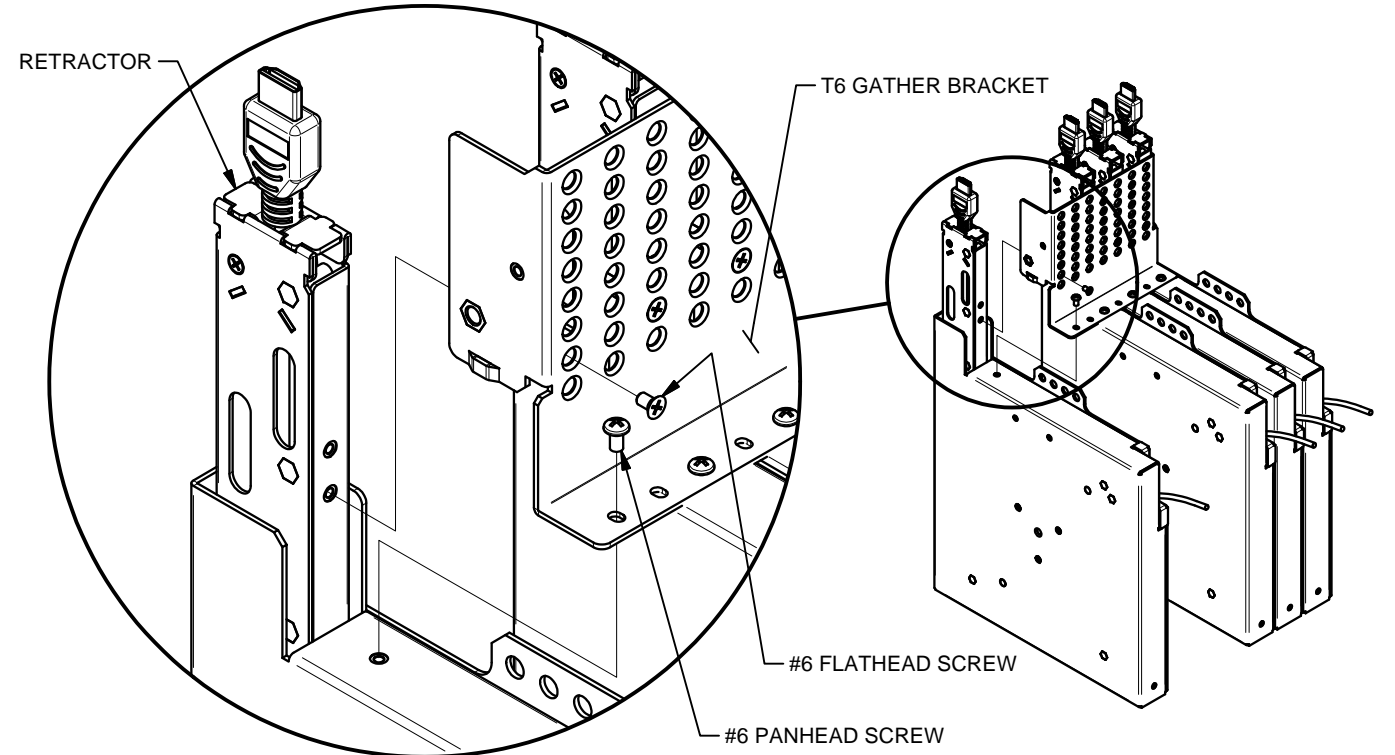


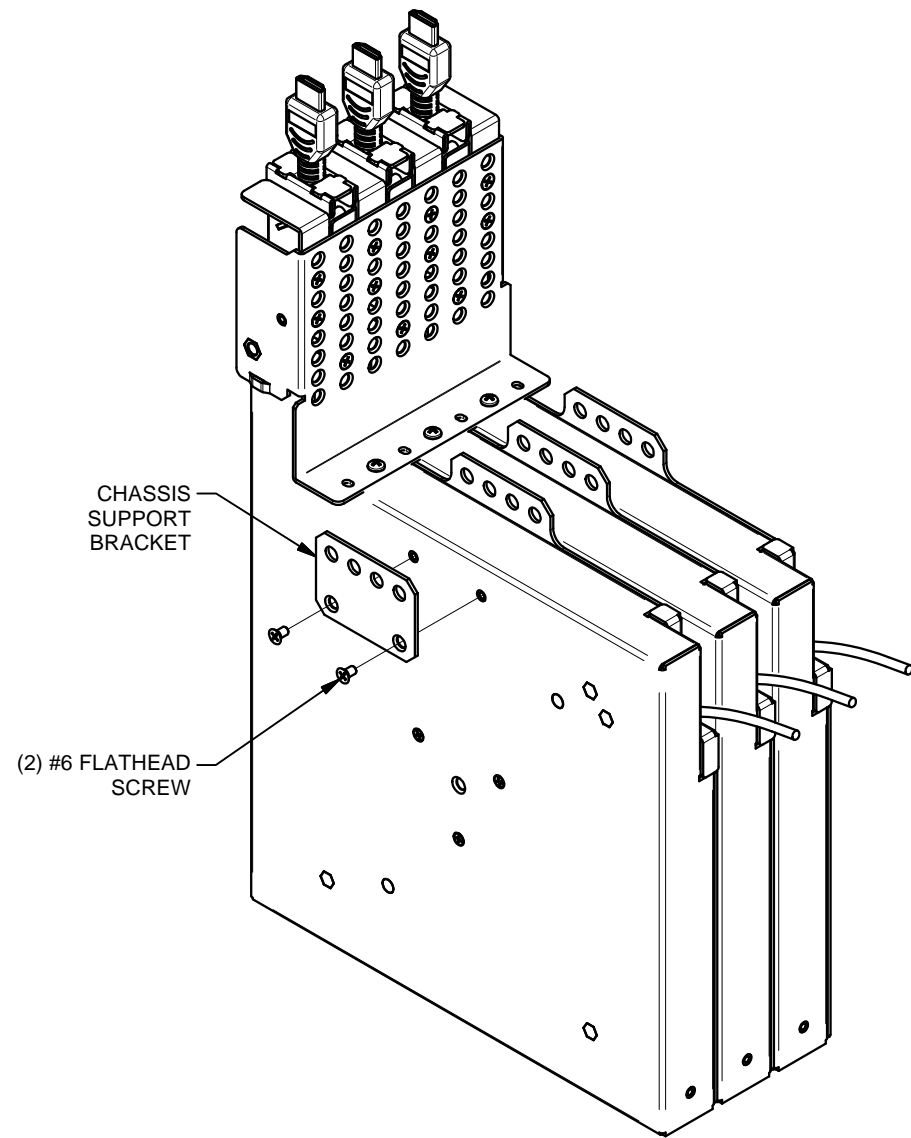
- 4a. ALIGN RING-PIN HOLES AND INSERT (2) RING PIN ON BOTH SIDES OF ASSEMBLY. FOR ADDITIONAL TAMPER-PROOF INSTALLATION, INSTALL (2) #6-32 x 1/4 LONG PAN HEAD SCREW.
- 4b. CENTER ADJUSTABLE HANGER AND LOOSEN WINGNUT. ALIGN ADJUSTABLE HANGER HOLES WITH RETRACTOR FLANGE HOLES, ENSURING THE HANGER IS VERTICAL AS POSSIBLE, AND INSERT APPROPRIATE-LENGTH CLEVIS PIN. SECURE CLEVIS PIN WITH HAIR-PIN COTTER.
- 4c. LIFT RETRACTOR ASSEMBLY TO TAKE UP ALL SLACK AND TIGHTEN HANGER WINGNUT TO ENSURE ASSEMBLY WEIGHT IS CARRIED BY THE TABLE. HANGER NUT CAN BE TIGHTENED FOR ADDITIONAL INSTALLATION SECURITY.



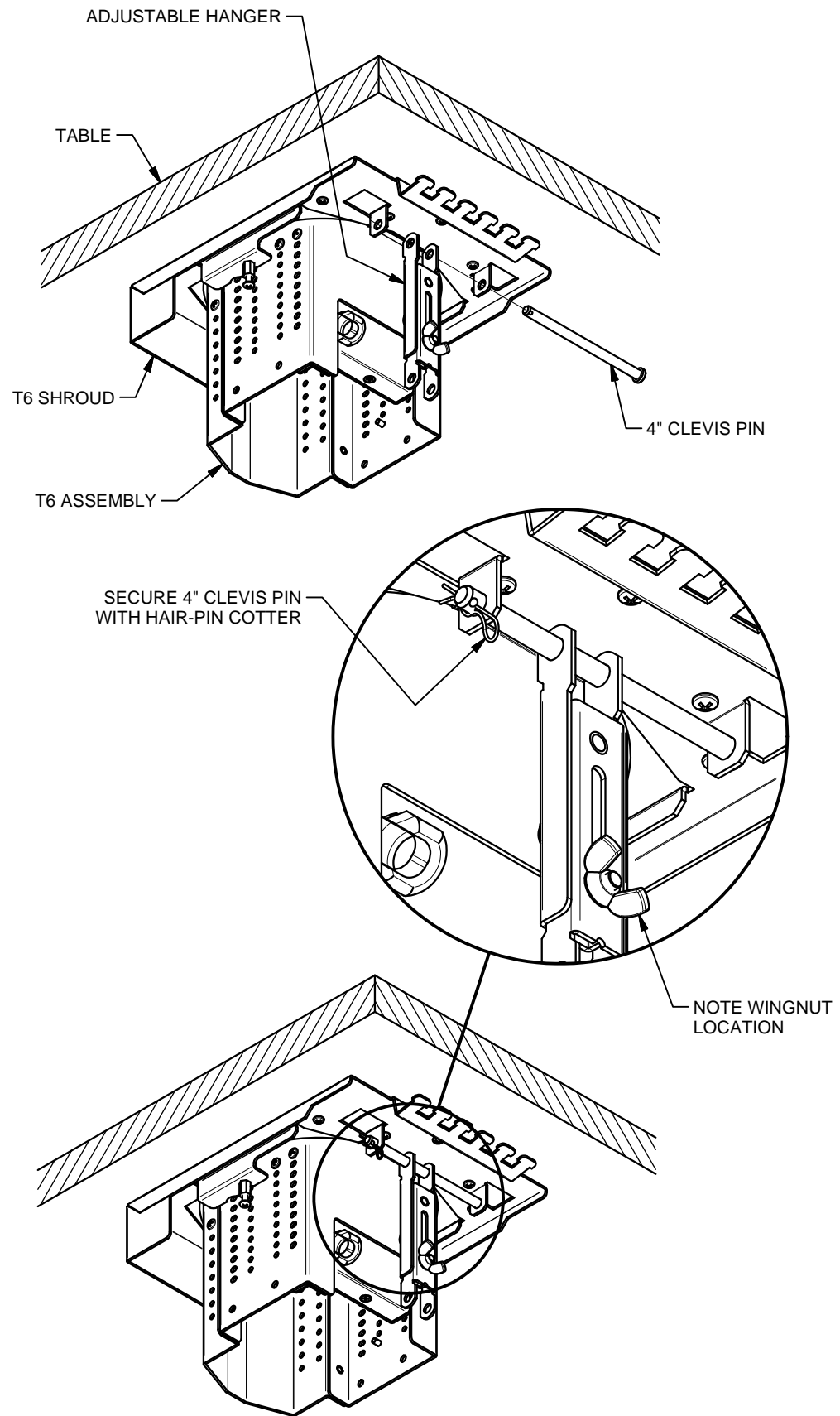
- 1a. ASSEMBLE RETRACTORS & GAP-FILLER BRACKETS AS REQUIRED ONTO T6 GATHER BRACKET.



1b. FOR 3 OR FEWER RETRACTORS, INSTALL CHASSIS SUPPORT BRACKET ONTO RETRACTOR.



2. INSTALL ADJUSTABLE HANGER ONTO T6 SHROUD WITH 4" CLEVIS PIN AND SECURE WITH HAIR-PIN COTTER.



3. SLIDE RETRACTOR ASSEMBLY UP INTO T6 ASSEMBLY.

