

# SWITCHING, SCALING, EXTENDING & SIGNAL PROCESSING



## Digital Video Solutions

 DV-HDA-12AUD 1x2 HDMI with extracted audio output	 DV-HMSW4K-88 8-Input x 8-Output HDMI Matrix Switcher	 DV-HDA-14AUD 1x4 HDMI Distribution Amp with extracted audio output	 DV-HDWS-41 Multi-Format Digital Video 4x1 Switcher Presentation Switcher supports Apple Airplay and Miracast
 DV-HSW-21A 2x1 HDMI VGA Switcher	 DV-MFSW-21A 2x1 HDMI / VGA Switcher	 DV-MFSS-71 7 x 1 Multi-Format Glitch-free Scaling Switcher	 DV-MFMV-74 7 x 1 MultiVU Scaling Windowing Switcher
 Compass 3.0 Presentation Switcher Family	 USB-EXT-1* 1-Port FlexPower 100m CAT-X Extender - PC to 1 device USB-EXT-2* 2-Port FlexPower 100m CAT-X Extender - PC to 2 devices *Power any side	 DR-EDID EDID Manager / Learner	 Digital Ribbon Cables High speed, high definition HDMI signal transmission over distances of up to 325 ft.

## HDBaseT™ EXTENDERS



**70 meter**






HD-H704K-SP  
HDBaseT 70m extender set - Compressed 4K-60 4:4:4, IR & RS- 232 18v PoE.

**100 meter**

 HD-H-SP-Tx — 100 Meter HDBaseT Slim-Pack Transmitter	 HD-HU-SP-Tx — 100 Meter HDBaseT 2.0 HDMI & USB Transmitter	 DV-HDSS-41-Tx — 100 Meter Four Input and Two Output Scaling Auto Switcher with HDBT
 HD-H-SP-Rx — 100 Meter HDBaseT Slim-Pack Receiver	 HD-HU-SP-Rx — 100 Meter HDBaseT 2.0 HDMI & USB Receiver	

FSR is now stocking **West Penn HDBaseT Certified Category 6A Plenum Cable Assemblies** in pre-terminated lengths from 50' to 330' (15 meter to 100 Meter). These are plenum rated cables that come in specific lengths with the shielded connectors already attached and will work with all of our FSR HDBaseT™ Products.

 HD-HWP-Tx 100 Meter HDMI Transmitter Wall Plate	 HD-HPCWP-Tx 100 Meter HDBaseT™ HDMI & VGA Switcher Transmitter Wall Plate
 HD-HPCUWP-Tx 100 Meter true HDBaseT 2.0 5-Play Transmitter Wall Plate	

## CONCERTTO CABLE MANAGEMENT



**CONCERTTO**  
This system provides clean, elegant cable management in table designs that lack a pedestal for hiding cables and power as they transition from the tables boxes to the floor.

**CONCERTTO Under-Table Rack**  
Under-table Rack shelving mounts multiple pieces of AV, Digital, or Data equipment to the underside of tables with easy access.



## CHARGING STATIONS



**Wireless Charger**  
The TC-WC1 fuses a refined minimalism with wireless charging technology. It is easy to install, giving you charging capabilities at your fingertips. The wireless charger is available in black or white with an aluminum bezel.



**CHRGUP-1 Charging Station**  
Charges up to 8 devices at a time. Includes 3 Apple Lightning, 3 Micro USB & 2 USB Type-C cables.

## INTELLIGENT PLATE SOLUTIONS



The IPS family of interconnect solutions offers a comprehensive selection of accessories, available in white or black. Simply select a plate that fits your application and available space. Then select your internal connector plate. IPS Plates come with a lifetime warranty. We offer FREE standard labeling. Visit our web site and drag and drop your solutions with IPS Designer.

All FSR Table, Floor, Wall and Ceiling Box CAD drawings are available on our website. For assistance in selecting the proper box to hold your power, data voice, video, etc., please call us at 1-800-332-FSR1 (3771).



HDBaseT™ and the HDBaseT Alliance logo are trademarks of the HDBaseT Alliance.\*



244 Bergen Boulevard · Woodland Park, NJ 07424  
800.332.FSR1 · 973.785.4347 · F: 973.785.3318  
W: fsrinc.com · E: sales@fsrinc.com  
© 2018 FSR, Inc. All Rights Reserved

LIT1188N



## AT-A-GLANCE



Audio, Video, Signal Management and Infrastructure Technologies

Boxes Done Right



## FLOOR BOXES

### Bringing Elegant Cable Access To Your Infrastructure.

A unique variety of boxes to handle stage, raised access, poured concrete or retro-fit flooring applications. FSR matches the décor of your installation with solid construction, beautiful carpet rims, flanges, and available accessories.

Our Fire-Resistant floor solutions expand the versatility of our floor box line by providing enhanced, fire-resistant versions of our existing products. Our FRK kits are UL listed and comply with UL 263 Fire Resistance Ratings.



**FIRE RATED**



CLASSIFIED  
UL US



## WALL BOXES

### Protect and Secure your Infrastructure Connections

Indoor and outdoor wall boxes protect your wall plates, panels and connections elegantly and securely.

The PWB-FR-450 is the industry's only fire-rated box of this size. Every wall mounted display needs a PWB!



PWB-100



PWB-320/323



PWB-320/323XL



**FIRE RATED**



PWB-FR-450 Large Project Wall Box  
Patent 9,806,509

### WEATHER BOX



OWB-500P

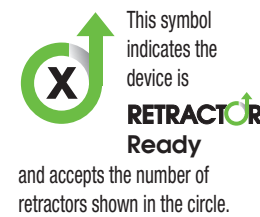


PWB-HVBX is "Retractor Ready" allowing users easy access to AV cables and AC power.

**NEW**



T3-PC1  
Patent Number US 0553,308 S



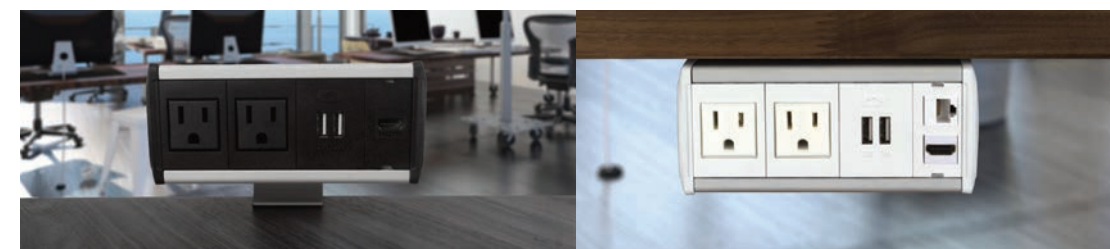
This symbol indicates the device is **RETRACTOR Ready** and accepts the number of retractors shown in the circle.



MADE IN THE USA

## TABLE CONNECTIVITY

A wide variety of table boxes that are unique and upscale, meeting the aesthetic demands of today's consultants, architects and clients. Brass, black, aluminum and nickel finishes, a variety of sizes, shapes, and accessories are available from stock.



SYMPHONY COLLECTION



UNITY COLLECTION



CT6-FLEX

HARMONY COLLECTION

## CT6 COLLABORATION BUNDLES

From a single computer, to a full classroom or multi-media boardroom, CT6 Bundles will distribute and process with cost-effective quality.

FSR takes the work out of designing collaboration systems. With 5 different prepackaged systems, integrators can choose the appropriate system for their customer's needs. The bundles range from 2 to 4 users. Each bundle includes a table box, a switcher and all the necessary cables. Bundles can be upgraded with optional cable retractors. Systems can also include FSR's HuddleVU Air wireless presentation switcher.

**DUAL BUNDLE**  
CT6 Table Box + DV-HSW-21A  
2 x 1 HDMI Switcher and Cable Kit

**DUAL LEGACY BUNDLE**  
CT6 Table Box + DV-MFSW-21A  
2 x 1 HDMI Switcher and Cable Kit

**QUAD BUNDLE**  
CT6 Table Box + DV-HDSS-41-Tx  
4 x 1 Scaling Switcher and Cable Kit

**QUAD AIR BUNDLE**  
CT6 Table Box + DV-HDWS-41  
Auto Scaling Presentation Unit and Cable Kit



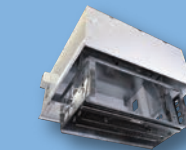
## CEILING BOXES

Now you can remove the unsightly equipment boxes hanging off projector poles and mount them in this architecturally-designed ceiling enclosure. Many styles, various price ranges, and "Smart and Green" modules make these boxes perfect for classrooms, boardrooms, meeting rooms and public spaces. These are your equipment racks for ceilings and walls.

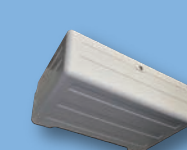
The NEW CB-AP Line of Access Point Ceiling Boxes are designed expressly for healthcare, education, and corporate Wi-Fi infrastructure solutions.



CB-12



CB-224



TOP SHELF



CB-SR22  
(shown with CB-22 Ceiling Box)

## ROOM CONTROL & COMBINING



FSR makes room control user friendly and cost effective!

### FLEX-LT - ROOM CONTROL AT YOUR FINGERTIPS

- 3.5" Diagonal Color LCD Touch Screen
- Self-contained with many features and models
- Wall or desk mounting
- Up to 4 serial and 4 IR Ports (select models)
- Multi Command Scripting, Conditionality, Flags and Counters
- Built In Clock / Calendar with Scheduler
- CU Configuration Utility



CT6-Flex



24/7 TECH SUPPORT

Flex-LT



**FLEX-1016 I/O Expansion Unit**  
Provides 16 Ground Closure Inputs, 16 Lamp Outputs and, RS-232 & IP Communication to expand the control capabilities of FLEX as well as interfacing with any 3rd party control system.



**ML-116 SIXTEEN ROOM COMBINING**  
Join several systems together and control up to 256 Rooms!



**BMS-1032 Background Music System**  
Select between 10 stereo audio sources from an elegant wall plate.

## SMART FIT (POKE-THRU)



### It's Not Just Power Anymore!

FSR SmartFit is an innovative system that provides flexible AV solutions for fire rated "poke-thrus". The SmartFit system features a universal cover assembly and multiple sub-plates that install on the fire rated "poke-thrus". NOW AVAILABLE IN 4", 6" & 8" SIZES.



GREEN



MADE IN THE USA



GREEN