

PORTABLE • ADAPTABLE • DURABLE

## SplicingTable

THE PORTABLE WORK TABLE  
FOR FIBER OPTIC PROFESSIONALS

Durable and portable, fold-flat work tables deliver the perfect work surface for outside and inside plant tech workers, installers, fiber splicers, and cable maintenance and repair technicians.



### All SplicingTable Features

- **Instant set up and take down**
  - Unfold and deploy in seconds for work that's safe, comfortable and efficient
- **Matte Black Work Top**
  - For high-contrast fiber visibility
- **High strength, low weight steel tube construction**
  - Rugged and tough
- **High quality "Powder Coat" Finish**
  - No rust, easy cleanup, durability
- **Fold flat design**
  - Stores out of the way in truck, van or trailer
- **Rounded Corners**
  - Prevents cable damage from snagging or grabbing



### ST-28

- Hook and loop cable control strip
- Matte Black Work Surface: 28"x22"
- Working Height: 28"
- Folded Dimensions: 36"x22"x2.75"
- Weight: 24 lbs
- Corner clamps for accessories or alternative leg mounts
- **Includes flex arm light, magnifier, universal cable clamp, wall hanger bracket, & accessory carrying case**



### ST-44

- Hook and loop cable control strip
- Matte Black Work Surface: 44"x22"
- Working Height: 29" or 36"
- Folded Dimensions: 53"x22"x2.75"
- Weight: 33 lbs.
- Corner clamps for accessories or alternative leg mounts
- **Includes flex arm light, magnifier, universal cable clamp, wall hanger bracket, & accessory carrying case, T-Bar, reversible leg extensions**



### ST-58

- Hook and loop cable control strip
- Matte Black Work Surface: 58"x22"
- Working Height: 29" or 36"
- Folded Dimensions: 70"x22"x2.75"
- Weight: 33 lbs.
- Corner clamps for accessories or alternative leg mounts
- **Includes flex arm light, magnifier, universal cable clamp, wall hanger bracket, & accessory carrying case, T-Bar, reversible leg extensions**



**A**  
**CORNER CLAMPS** – Accommodate additional accessories or mounting 5/8" Ground Rods as alternative legs for stable, level set up at virtually any work site



**B**  
**T-BAR** – Keeps buffer tubes elevated, captured, safe and clean during splicing, and closure installation (Included with ST-44 & ST-58 Tables)



**C**  
**HOOK AND LOOP CABLE CONTROL STRIP** – Secures small cables and buffer tubes organized and in place while working



**D**  
**LEG EXTENSIONS** – Increase table height while penetrating soil tip aids outdoor leveling and stability. Opposite rounded tip is perfect for use on floors. (Included with ST-44 and ST-58 Tables)

# Splicing Table Accessories

Adaptable, quick-mount, flex-arm accessories are designed to enhance any Splicing Table, improving comfort, effectiveness, and efficiency.



## Accessory Kit Included with all Splicing Tables

Kit comes in a compact, durable, soft-sided carrying case to keep everything clean, well-organized and undamaged.

### ACCESSORY KIT CONTAINS THE FOLLOWING:

- 24" Flex-Arm Light with Quick-Connect Clamp
- 24" Flex-Arm 2x Magnifier with Quick-Connect Clamp
- Universal Cable Clamp



### CORDED LIGHT WITH FLEX ARM

- Includes 24" Flex Arm and Quick-Connect Mounting Clamp
- Accepts standard light bulb — light, right where you need it
- Cool to the touch housing — reposition easily
- Heavy-duty 10-foot cord



### MAGNIFIER LENS WITH FLEX ARM

- 2x Magnification with 4x spot — perfect for fiber optic work
- Includes 24" Flex Arm and Quick-Connect Mounting Clamp



### QUICK-CONNECT MOUNTING CLAMP

- Both Flex arm light and Magnifier include our unique, quick-connect mounting clamp that allows you to leave the clamp in place on the table while quickly removing the Flex-Arm accessory for storage. No repositioning required.
- Mounted Flex-Arm also rotates easily for swing-out-of-way adjustment and return



## More Splicing Table Accessories



### UNIVERSAL CABLE CLAMP

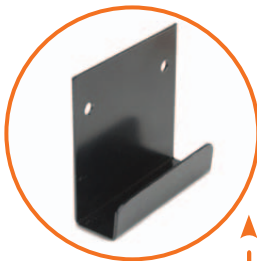
- Clamp secures up to two cables firmly in place while working (Holds one or two cables 3/8" to 7/8" in diameter)
- Mounts solidly to the Splicing Table either horizontally (cables parallel to table surface) or vertically (cables perpendicular to table surface) for maximum adaptability
- Same rugged clamp design as our lamps and magnifiers

Universal  
Clamp in horizontal  
and vertical applications



### T-BAR FIXTURE

- Keeps fiber buffer tubes and cables elevated, clean and captured during work
- Ideal for "High Fiber Count" and "Hot Cut" splicing applications
- **Included with ST-44 and ST-58 Splicing Tables**



### HANGER BRACKET

- Hanger Bracket screws easily onto the wall of your truck, van, trailer or warehouse for out-of-the-way storage of any Splicing Table model
- **Included with all Splicing Tables**



### LEG EXTENSIONS

- Leg Extensions come standard on all ST-44 and ST-58 Tables
- reversible: Pointed-tip penetrates soil to aid outdoor leveling and stability. rounded plastic tip on opposite end is perfect for use on floors and hard surfaces
- Increases Table Height by 7"
- **Included with ST-44 and ST-58 Splicing Tables**