



FLUKE®

Reliability

Report Date 2/3/2021

Author Fluke Reliability

Summary

Operating Conditions

Unit System	Metric
Currency	EUR
Gas type	Air
Pressure in bar	5 bar
Cost of gas in EUR per 1000 Liter / 1m3	0
Cost of electricity in EUR per kWh	0.1090909091
Specific power: ratio of power to flow rate in kW per 100l/min	1.06
Operating hours per year	8760

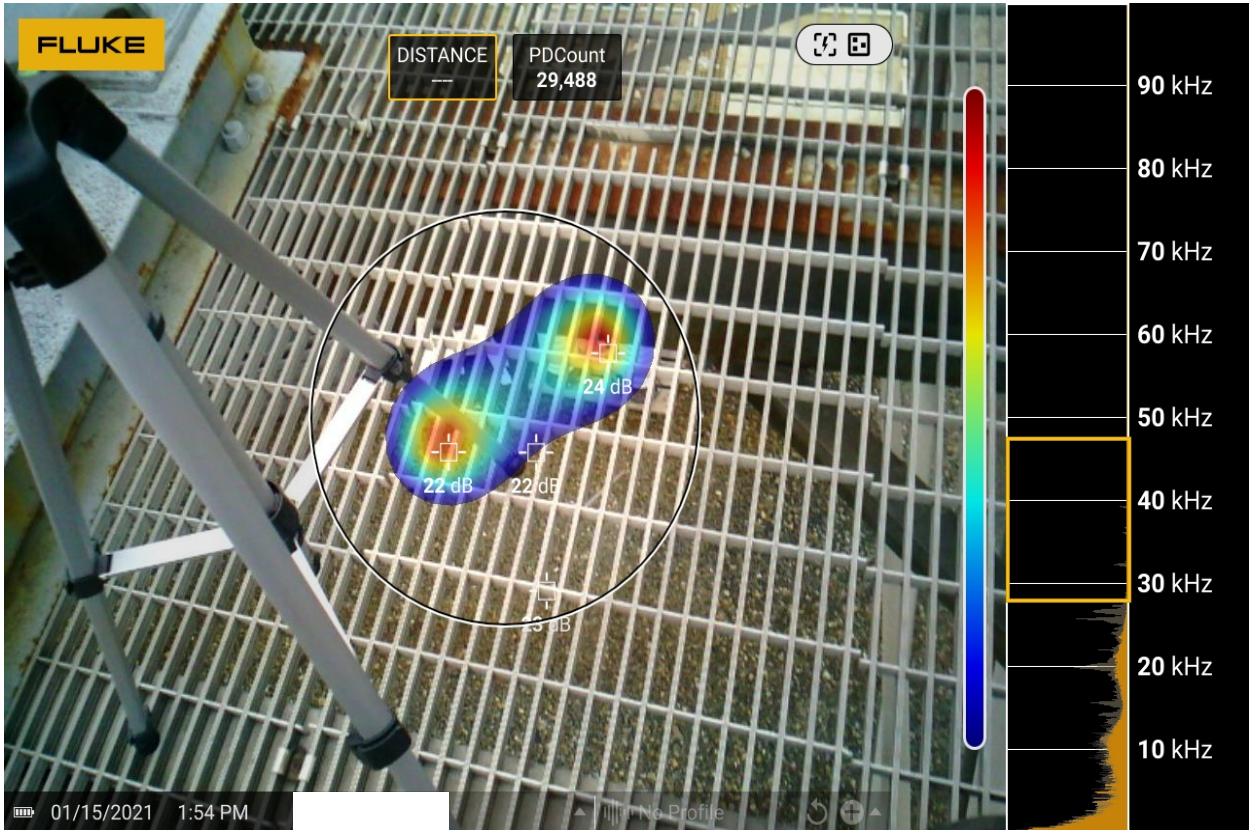


Image Info

Name	0032.as2
Type of Capture	PDQ
PD Count	29,487.83
Min dB	0.00
Max dB	0.00
Sound Pressure Level At Sensor	0 DB
Distance To Source	14.42 FEET
Sound Pressure Level At Source	47 DB
Survey Name	
Ambient Temperature	32 °F
Discharge Type	
Relative Humidity	0.00
Voltage	0.00
Weather Note	

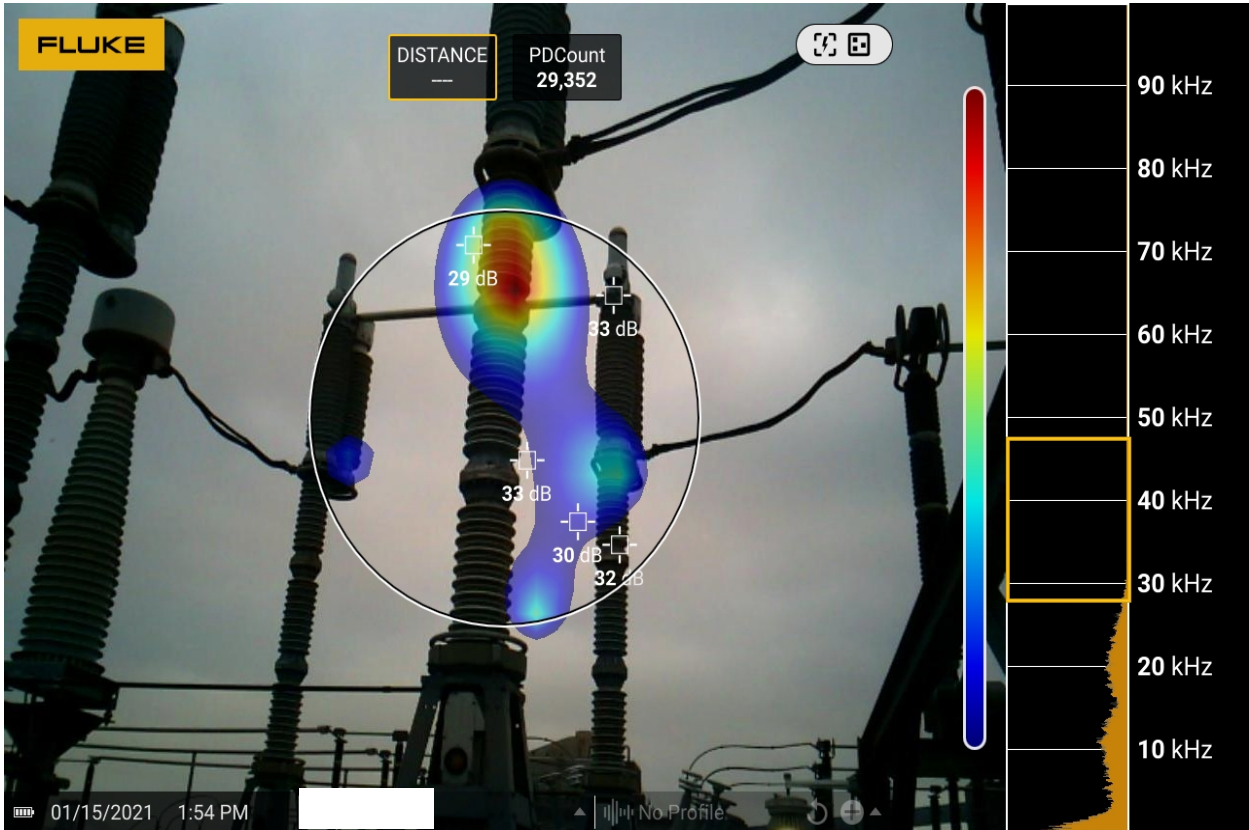


Image Info

Name	0031.as2
Type of Capture	PDQ
PD Count	29,351.98
Min dB	0.00
Max dB	0.00
Sound Pressure Level At Sensor	0 DB
Distance To Source	22.53 FEET
Sound Pressure Level At Source	60.61 DB
Survey Name	
Ambient Temperature	32 °F
Discharge Type	
Relative Humidity	0.00
Voltage	0.00
Weather Note	

Summary

The estimations provided by this application are designed to be informational only. This model is provided as a rough approximation of the energy savings (Fluke ii900/ii910) and partial discharge severity / type (Fluke ii910) found with the Fluke ii900-Series Acoustic Industrial Imager. The indications are not a commitment to actual energy savings and/or an indication of purchase advice and/or partial discharge severity and/or partial discharge type. The results presented by are hypothetical and may not reflect actual results at your facility or infrastructure. The indications are based on industry averages and proprietary research conducted by the Fluke Corporation.