

**FLUKE®**

# FlukeView® 2

Software for ScopeMeter® Test Tool  
and Motor Drive Analyzer Test Tool

Users Manual

January 2016 Rev. 2, 8/21

©2016-2021 Fluke Corporation. All rights reserved.

All product names are trademarks of their respective companies.

# License Agreement

© 2006-2021 Fluke Corporation.

The information contained in this document is subject to change without notice. Fluke, the Fluke logo and FlukeView are trademarks of Fluke Corporation. Windows is a trademark of Microsoft Corporation.

All other trademarks are the property of their respective holders.

## END USER LICENSE AGREEMENT (EULA)

The enclosed software product is furnished subject to the terms and conditions of this agreement. Retention of the software product for more than thirty days, opening the sealed wrapper surrounding the product, or use of the product in any manner will be considered acceptance of the agreement terms. If these terms are not acceptable, the unused product and any accompanying written material should be returned promptly to Fluke or the place of purchase for a full refund of the license fee paid.

- 1. GRANT OF LICENSE.** Fluke Corporation (Fluke) grants you the right to use the enclosed software in accordance with the terms of this EULA. This grant of license does not include the right to modify or distribute the software.
- 2. TITLE, COPYRIGHT AND TRADEMARK.** This software product is owned by Fluke or its suppliers and is protected by United States copyright laws and international treaty provisions. Therefore, except for the rights granted to you above, you must treat the software product like any other copyrighted material, and any copies must include the proper copyright notice.
- 3. RESTRICTIONS.** You may not reverse engineer, decompile, or disassemble the software. If the software product is an update, any transfer must include the update and all prior versions. You may use the software only in conjunction with the Fluke products for which it is intended. You may not export or re-export the software to any country to which such export or reexport is restricted by law or regulation of the United States, or any other government having jurisdiction, without prior permission from Fluke.
- 4. TERM.** This license agreement is effective upon your acceptance and shall remain in effect until terminated by (a) written notification to Fluke or (b) a failure on your part to comply with the license agreement. Upon termination of the license agreement, you shall return to Fluke or destroy all copies of the software product and associated written materials.
- 5. OTHER AGREEMENTS.** Where terms or conditions of this agreement conflict with terms or conditions of other agreements, this agreement supersedes other agreements.
- 6. LIMITED WARRANTY.** Fluke warrants that the software product will perform in its intended environment substantially in accordance with the accompanying written materials for a period of 90 days from the date of license acceptance. Fluke further warrants that the original copy of the software has been recorded on non-defective media. Fluke does not warrant that the software will be error free or operate without interruption.
- 7. REMEDIES.** Fluke's entire liability and your exclusive remedy shall be at Fluke's option, (a) the return of the price paid for the product, or (b) repair or replacement of the software product that does not meet the limited warranty. This limited warranty is void if failure of the product has resulted from accident, abuse, or misapplication. Any replacement software product will be warranted for the remainder of the 90-day original warranty period or 30 days, whichever is longer.
- 8. NO OTHER WARRANTIES. FLUKE DISCLAIMS ALL OTHER WARRANTIES, EITHER EXPRESS OR IMPLIED BUT NOT LIMITED TO IMPLIED WARRANTIES OF MERCHANTABILITY AND FITNESS FOR A PARTICULAR PURPOSE, WITH RESPECT TO THE SOFTWARE PRODUCT AND THE ACCOMPANYING WRITTEN MATERIALS.** In no event shall Fluke or its suppliers be liable for any damages whatsoever (including, without limitation, indirect, consequential, or incidental damages, damages for loss of business profits, business interruption, loss of business information, or other pecuniary loss) arising out of the use of or inability to use this software product, even if Fluke has been advised of the possibility of such damages.
- 9. GOVERNING LAW.** This agreement and license shall be governed in the United States by the laws of the State of Washington, U.S.A., and elsewhere by the laws of the country within which the agreement is made.

# Table of Contents

Title	Page
Introduction . . . . .	1
Contact Fluke . . . . .	1
Installation . . . . .	2
Software Activation . . . . .	2
MDA/190 II/190 III Test Tool Connections. . . . .	2
120B ScopeMeter Test Tool Connections. . . . .	4
Software Connection . . . . .	4
Overview . . . . .	6
Main Window . . . . .	6
Menu . . . . .	8
Filter. . . . .	10
Basic Operation . . . . .	10
Screens . . . . .	11
Waveforms . . . . .	11
How to Work with Setups . . . . .	12
How to Work with Reports . . . . .	12
How to Work with 120B Recording . . . . .	13
Save Data to File. . . . .	13



## ***Introduction***

FlukeView™ 2 software works with your ScopeMeter® Test Tool or Motor Drive Analyzer Test Tool. With FlukeView 2 you can:

- Document: Transfer screens, waveforms, and measurement data from the Test Tool to your PC to print, or to import data into other programs.
- Archive: Store and retrieve screens or waveforms with text annotations and create your own library for easy reference and comparison.
- Analyze: Gather valuable measurement data and enable cursor measurement to reveal relationship and conditions.

The setup program installs the FlukeView 2 software on PCs that operate on Windows 10, or later.

## ***Contact Fluke***

Fluke Corporation operates worldwide. For local contact information, go to our website: [www.fluke.com](http://www.fluke.com).

To register your product, view, print, or download the latest manual or manual supplement, go to our website.

Fluke Corporation  
P.O. Box 9090  
Everett, WA 98206-9090

+1-425-446-5500

[fluke-info@fluke.com](mailto:fluke-info@fluke.com)

## Installation

The software is available to download from the Fluke website:  
[www.fluke.com/support/software-downloads](http://www.fluke.com/support/software-downloads).

To install software:

1. Run the installation program from the download.  
The setup program starts up.
2. Follow the on-screen instructions to complete the installation.

## Software Activation

Your purchase of the Test Tool includes FlukeView 2 software that is a demo version with limited capabilities. When the demo version of FlukeView 2 opens, the Activation dialog opens and prompts for an activation key.

To activate the software for the full version:



1. Type your 15-digit activation key in the Activation dialog box.  
Fluke provides the activation key with the purchase of software.
2. Select **Activate** for the full functionality of FlukeView 2.  
If you do not have a key, select **DEMO** to continue to use the demo version with limited functionality.

## MDA/190 II/190 III Test Tool Connections

FlukeView 2 software communicates with the Test Tool through WiFi (Series III) or the optional USB cable. See Figure 1.

Also see the *Test Tool Users Manual* for more information.

To use with WiFi:

1. Insert the WiFi adapter. The tool automatically detects the adapter and turns on WiFi.
2. To check the WiFi settings push  on your Test Tool. Push  to turn on or turn off the WiFi.
3. On the PC, use the SSID of the Test Tool to establish a WiFi connection to the PC.

*Note*

*If the PC is connected by WiFi to a wireless access point that provides Internet access, this connection is lost when you connect to the Test Tool.*

4. Select **Connect**.

To use with USB cable:

1. When you use the USB (A to mini B) cable for the first time, the driver for the cable automatically installs on the PC.
2. Select **Connect**.



Figure 1. Test Tool to PC Connections

## 120B ScopeMeter Test Tool Connections

FlukeView 2 software communicates with the Test Tool through WiFi or the optional optically-isolated USB cable, OC4USB. See Figure 2. Also see the *123B/124B/125B ScopeMeter Test Tool Users Manual* for more information.

**1** To use with WiFi:

1. Turn on WiFi in the Test Tool.

### Note

*Fluke 120B Series: Push  + **F1** to turn on the WiFi.  shows in the Information area.*

2. On the PC, use the SSID of the Test Tool to establish a WiFi connection to the PC.

### Note

*If the PC is connected by WiFi to a wireless access point providing Internet access, this connection is lost when you connect to the Test Tool.*

3. Select **Connect**.

**2** To use with USB:

1. Connect the PC with the optional OC4USB cable.

When using this cable for the first time, the FTDI driver for the cable automatically installs. The driver installation requires an Internet connection. This driver is the Virtual Com Port driver available on [www.ftdichip.com](http://www.ftdichip.com).

2. Select **Connect**.

## Software Connection

At startup, FlukeView 2 automatically tries to make a connection with the Test Tool. An icon for the instrument shows at the top of the window if the connection is successful and the Test Tool is connected. See Figure 3, item A.

If you do not see the icon, this automatic connection is not successful. Click **Connect** to make the connection with the Test Tool.



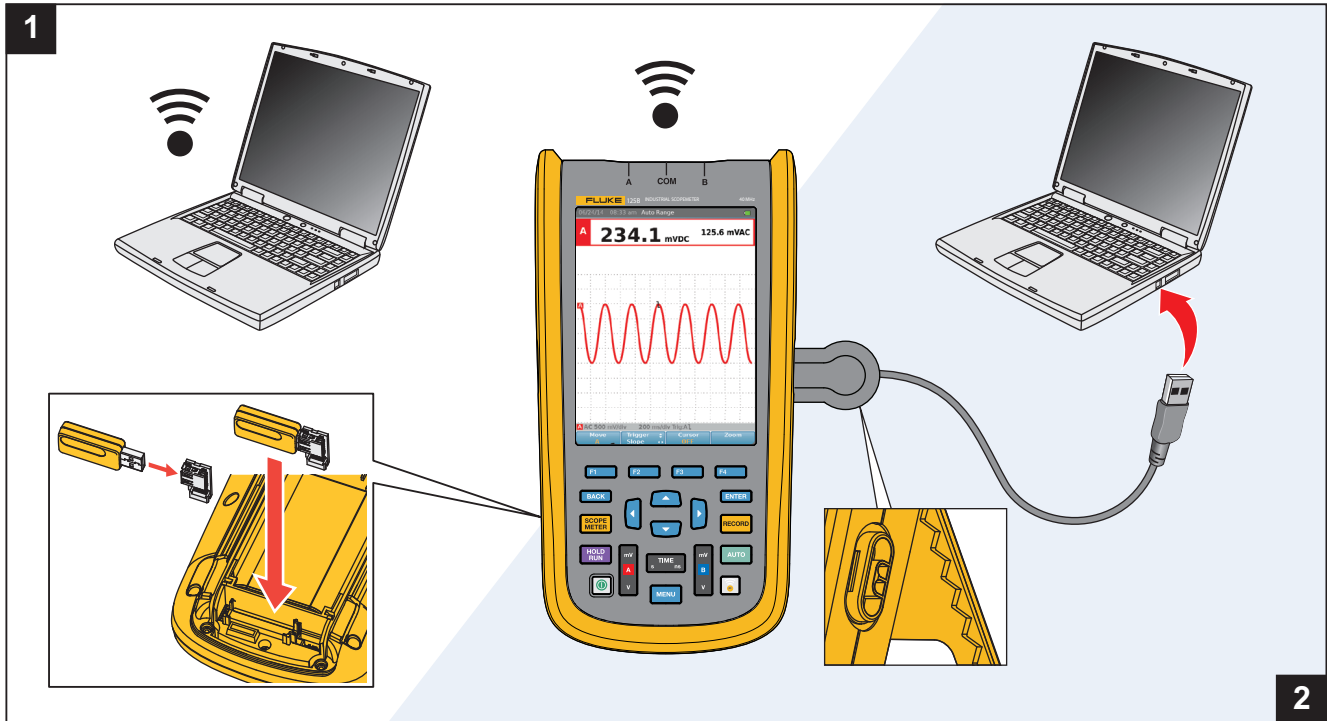


Figure 2. 120B ScopeMeter Test Tool to PC Communication

## Overview

FlukeView 2 software enables you to read data from the Test Tool. Data is transferred from the Test Tool as a Measurement Group that consists of one or more of these components:

- Screen

This is bitmap data from the Test Tool screen in pixel-format that you can print or copy to another program. You can include the picture in documents and reports.

- Waveform

This is sampled data with time information on the x-axis and amplitude values on the y-axis. You can analyze this data in more detail on the PC and copy it to another program as tabular text (.csv file format) information.

- Setup

This is binary data that represents all of the settings of the Test Tool. You can send the Setup data back to the Test Tool to put it in the same state as when the setup was saved.

## Main Window

The main window is an overview of all the Measurement Groups since the start of the program and all items that have been stored to the database. See Figure 3.

Each Measurement Group can have a screen, waveforms, and a setup. Icons shown below the Measurement Group indicate what is included. The icon is gray, if the data component is not included.

The most recent Measurement Group shows on the top left portion of the window. See Figure 3, item ②.

Tips:

- Double-click on the Measurement Group or click **Analyze > Overview**.
- To select multiple groups, hold the **Shift** key or **Ctrl** key and click.

*Note*

*For touch screens, use the touch conventions that correspond with mouse functions.*

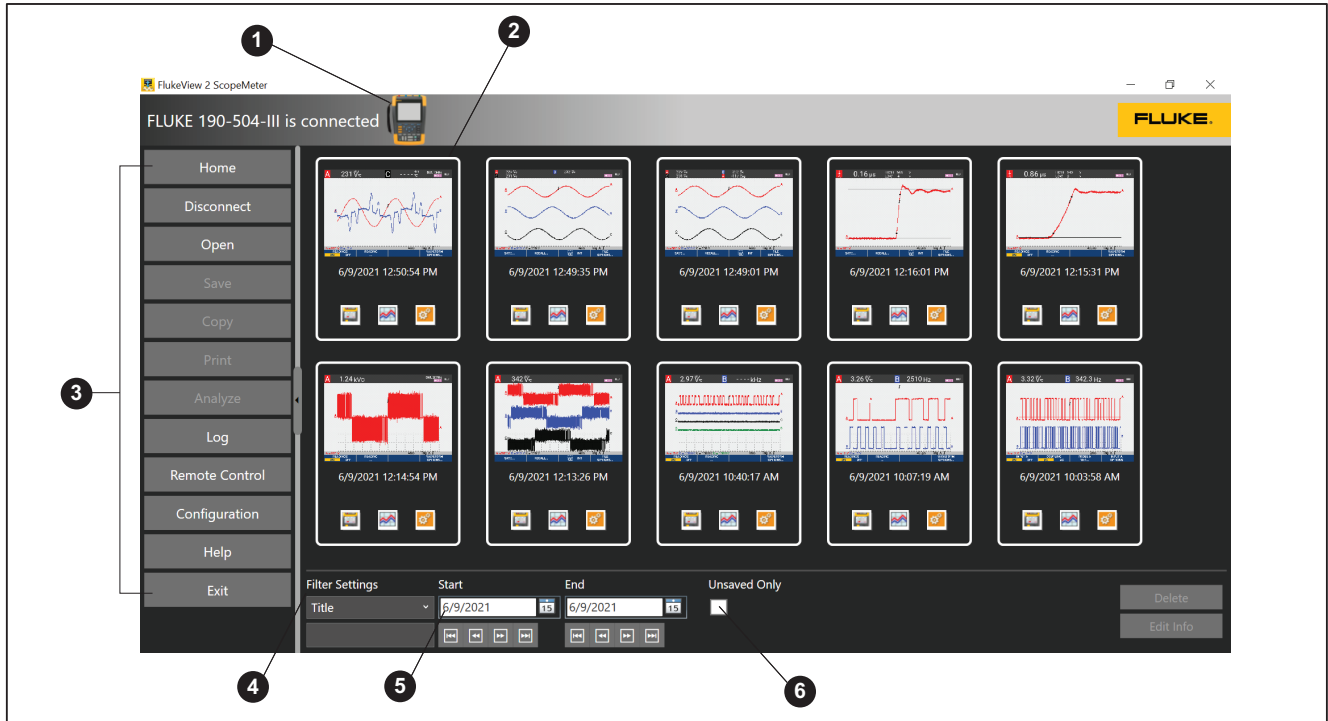


Figure 3. FlukeView 2 Main Window

## Menu

Use the menu buttons on the left toolbar to access the software functions. See Figure 3, item ③.

Table 1 is a list of the menu items and functions.

**Table 1. FlukeView 2 Menu Functions**

Menu	Sub-menu	Description
<b>Home</b>	---	Go to the main window.
<b>Connect/ Disconnect</b>	---	Connect/Disconnect the PC with the Test Tool. The label changes to show the current status.
<b>Open</b>	From Instrument	Transfer the screen, waveform, and setup information from the Test Tool to the PC. For the Motor Drive Analyzer, a report that consists of a number of screens can be transferred immediately.
	From File	Open a stored screen, waveform, and setup information from selected file.
<b>Save</b>	To Instrument	Transfer the setup data to the Test Tool.
	To Database	Save the selected Measurement Groups to the database. When this data is stored to the database, the information is retrieved easily with the Filter settings on the bottom of the main window.
	To File	Save the selected Measurement Groups to a FlukeView 2 file, export a screen to a .bmp file, or export waveform data to a .csv file.
<b>Copy</b>	Screen	Copy screen information as a bitmap to the clipboard.
	Waveform	Copy waveform data as tabular text data to the clipboard.

**Table 1. FlukeView 2 Menu Functions (cont.)**

Menu	Sub-menu	Description
Print	Screen	Print the screens of selected Measurement Group. The Additional Info and Description print as well.
	Waveform	Print the waveforms of the selected Measurement Group. Additional Info and Description prints as well.
	Report	Print the selected screens. The Additional Info prints as the header. Description prints for each screen.
Analyze	Overview	Shows selected Measurement Groups in more detail and allows you to add Additional Info and Description. Double-click on the waveform to select Analyze Waveform. Double-click on the screen to see a larger screen display.
	Waveform	Shows selected waveforms of the Measurement Groups and allows you to zoom the data and show the cursors on the waveform.
Log	Readings	Log the meter readings over time. The logged readings are stored in the same way as the waveform data.
Configuration	---	<p>Change the language or color scheme. To activate the change:</p> <ol style="list-style-type: none"> <li>1. Select <b>Save</b>.</li> <li>2. Restart the application.</li> </ol> <p>Includes the option to clean up the internal database and compress the file size for faster operation.</p>
Help	About	Shows the version information for the software.
	Manual	Opens a PDF of the users manual.
Exit	---	Close the FlukeView 2 software.

## Filter

On the bottom of the screen you can select a filter to limit the amount of Measurement Groups that are visible in the main window. See Figure 3, item ④.

Use **Start** and **End** to select the date range of the items that show in the main window. See Figure 3, item ⑤.

Check the **Unsaved Only** option to show only the items that are not yet saved to the database. See Figure 3, item ⑥.

The drop-down list on the left of the Filter settings allows you to filter on Measurement groups with “Additional Info.” See Figure 3, item ④.

As an example:

1. Select **Company Name** from the drop-down list.
2. In the field below the text, enter **Enterprise**.

This shows the Measurement groups with the text, **Enterprise**, in the Additional Info field.

To edit the Additional Info field:

1. Click on the **Edit Info** button at the bottom of the screen.
2. Or, go to **Analyze Overview** and select **Additional Info**.

## Basic Operation

The screen, waveform data, and setup show as a Measurement Group in a small window on the main window.

To transfer the data as a Measurement Group from the Test Tool to the PC:

1. Select **Open > From Instrument**.
2. Select **Active**.

To transfer Measurement Groups that are stored in the internal memory of the Test Tool:

*Note*

*Not supported with WiFi communication.*

1. Select **Open > From Instrument**.
2. Select **Saved**.

To view a Measurement group in more detail:

1. Double click the Measurement Group or select **Analyze Overview**.

You can add a description about the measurement for later reference and printing:

1. Click on the small arrows next to Additional Information.
2. Type in a description to add information to the measurement.

## **Screens**

To copy the screen as a bitmap to the clipboard, for example, to paste into a report:

1. Select a Measurement Group.
2. Select **Copy > Screen**.

You can now paste from the clipboard into another application.

To print screens from the selected Measurement Groups, select **Print > Screen**. The selected screens print and include Additional Information and Description.

To see a screen in more detail:

1. Double-click a Measurement Group in the main window.
2. Double-click the screen to open a larger view of the screen.

## **Waveforms**

To copy the waveform data as tabular text information to the clipboard, for example, to paste into a spreadsheet:

1. Select a Measurement Group.
2. Select **Copy > Waveform**.

To see the waveform data in more detail:

1. Double-click the Measurement Group.
2. Double-click the waveform to see a larger view of the waveform. Or, select **Analyze Waveform**.
3. Click and drag the axis that corresponds to a waveform to move the waveform up and down.

To view cursor readings and waveform information:

1. Select the **Cursor** button in the Analyze Waveform window.

The Datablock on the right side shows waveform information and the Cursor values section shows the information about the cursor readings.

2. Click and drag to move the cursor.

When two waveforms show on the display, click the waveform to select the waveform for the cursor readings.

To zoom in on the waveform:

1. Select **Zoom**.
2. Click and drag with the mouse inside the graph or use the controls on the horizontal scrollbar.
3. Click **Zoom** again to exit the zoom function.

To compare waveforms from two Measurement Groups:

1. In the main window, select two Measurement Groups.
2. Select **Analyze > Waveform**.
3. Select both Measurement Groups in the bottom of the window.

The waveforms of both Measurement Groups are shown.

### **How to Work with Setups**

A Setup is binary data that represents all of the settings of the Test Tool. This data is not visible.

To configure the Test Tool in the same state as when the Measurement Group was transferred, select

**Save >To Instrument > Setup**.

### **How to Work with Reports**

For MDA models, you can create a Report on the Test Tool. You can also save a collection of screens as a Report. The name of the report needs to be entered once. For all successive Save To Report selections, a bitmap of the screen is added until the report is closed.

To open a report from the MDA model:

1. Select **Open > From Instrument > Report**.
2. Select the name of the Report in the dialog box with the drop-down menu.
3. Click **Start**.

All report screens show on the Home screen and are selectable. No waveform data or setup data is transferred. Each measurement group consists of a screen only.

The title of all the screens is the report name as entered on the Motor Drive Analyzer. The Description text shows the measurement function.

You can save the report to a USB drive on the Motor Drive Analyzer. This report is saved on the drive as a directory with multiple .PNG files. The directory contains a .FVS file to use as a method to select the report.

To open a report from a USB drive or other disk from the PC:

1. Select **Open > From File**.



2. Select the report directory and then the .FVS file in that directory.

All screens are selected after transfer from the Test Tool or opening from the drive.

- You can choose to print:  
Select **Print > Report**.
- Save to file:  
Select **Save > To File**.
- Save to database for later use in the FlukeView 2:  
Select **Save > To Database**.

### **How to Work with 120B Recording**

Use the WiFi on the 120B Test Tool to transfer a Meter or Scope recording or store them on a micro SD card and then open the recording in FlukeView 2.

To transfer a recording with WiFi:

1. Select **Open > From Instrument > Recording**.
2. Select the name of the recording in the dialog box with the drop-down menu.
3. Click **Start**.

The recording can also be saved to a micro SD card on the Fluke 124B or 125B.

The recording is saved on the drive as a directory with multiple binary files. The directory also contains a .FVR file that can be used a method to select the Recording.

To open a recording from a micro SD card or disk of the PC:

1. Select **Open > From File**.
2. Select the report directory and then the .FVR file in that directory.

### **Save Data to File**

To save Selected Measurement Groups to a file:

1. Select **Save > To File**.
2. Enter a name for the file in the File Name box.
3. Select .CSV to save only the waveform data to the file. Or, select .BMP to save only the screen data to the file.

To save Measurement Groups to a database for easy access, select **Save > To Database**. The Measurement Group is saved to a database of measurements. With the database, you can easily retrieve information. Use the Filter settings to limit how many Measurement Groups show in the main window.

