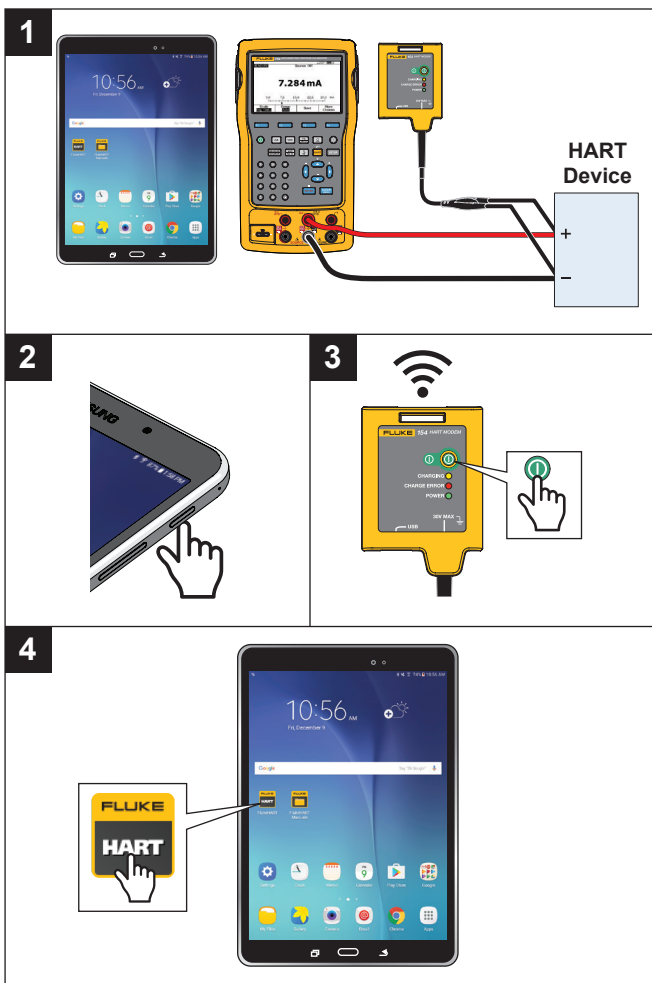


# 154

## HART® Calibration Assistant



See Users Manual for “Safety Information” and User information.

Go to [www.fluke.com](http://www.fluke.com) to register your product and for more information.

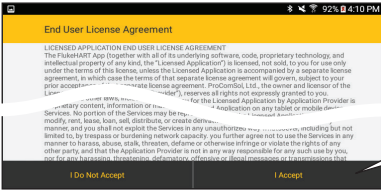


PN 4766015 February 2016, Rev. 2, 12/17

© 2016-2017 Fluke Corporation. All rights reserved.

All product names are trademarks of their respective companies.

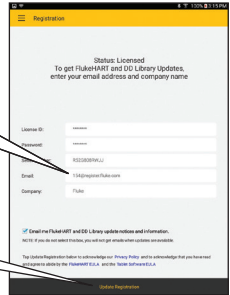
5



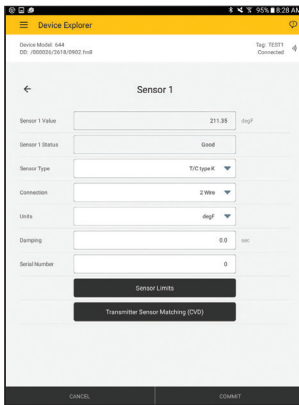
6

Email: 154@register.fluke.com

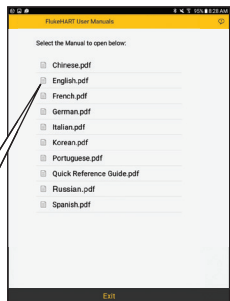
Company: Fluke



7



## Fluke 154 Users Manual



Wireless service not included with purchase.