

BT508/BT510/BT520/BT521 Battery Analyzer

Quick Reference Guide / 快速参考指南

⚠ Warning / 警告

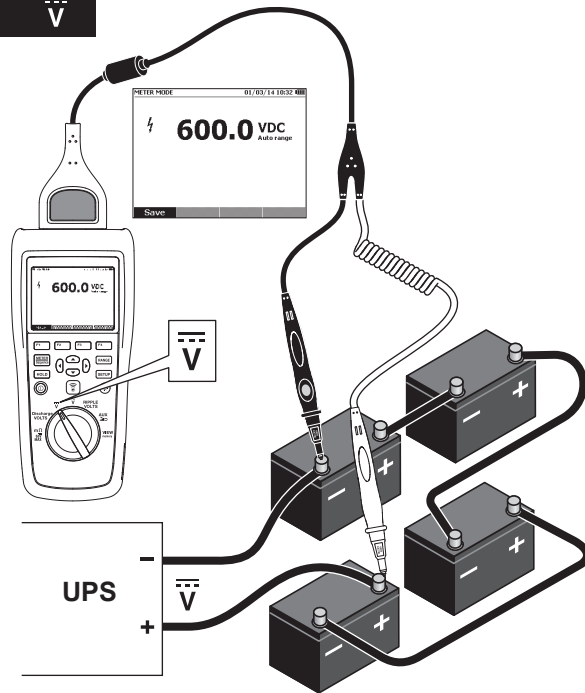
To prevent possible electrical shock, fire, or personal injury, read the "BT508/BT510/BT520/BT521 Safety Sheet" before you use this Product.

为了防止可能发生的电击、火灾或人身伤害，使用本产品前请阅读《BT508/BT510/BT520/BT521 安全说明书》。

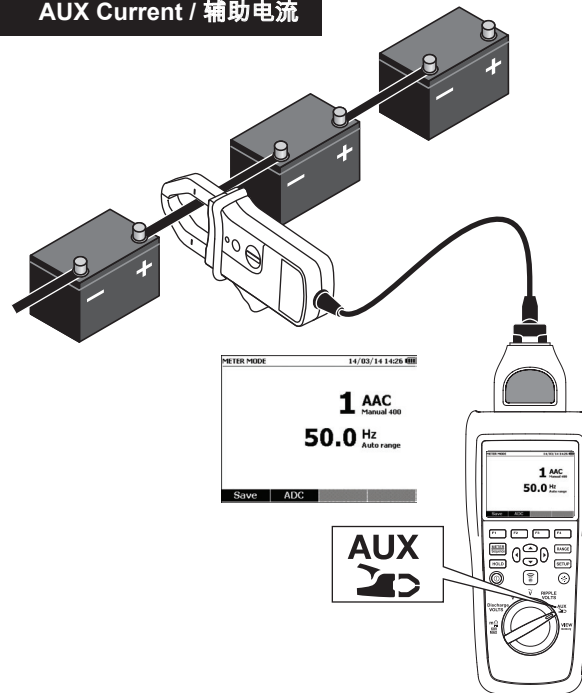
Go to www.fluke.com to register your product, download manuals, and find more information

请至 www.fluke.com 注册您的产品、下载手册，并获取更多信息。

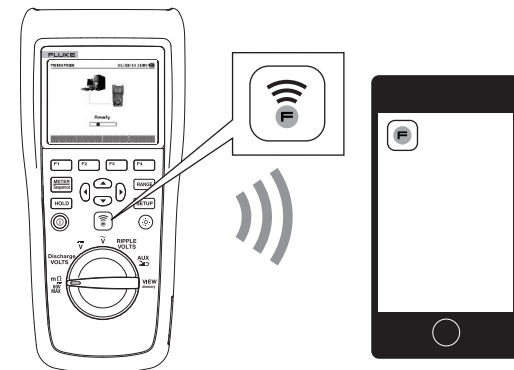
V



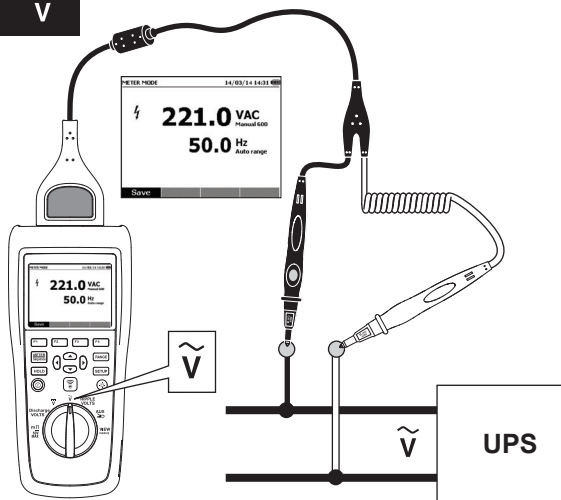
AUX Current / 辅助电流



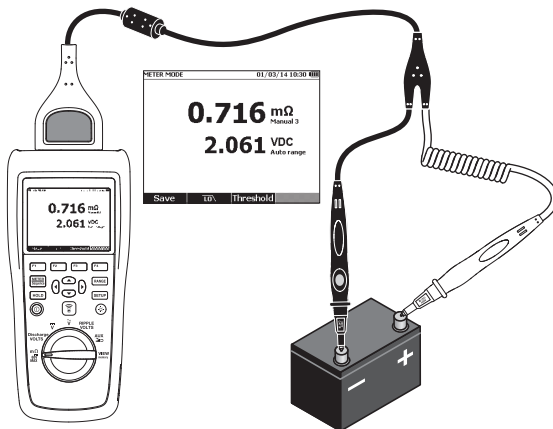
Mobile Apps (BT521 Only) / 移动设备 (仅限BT521)



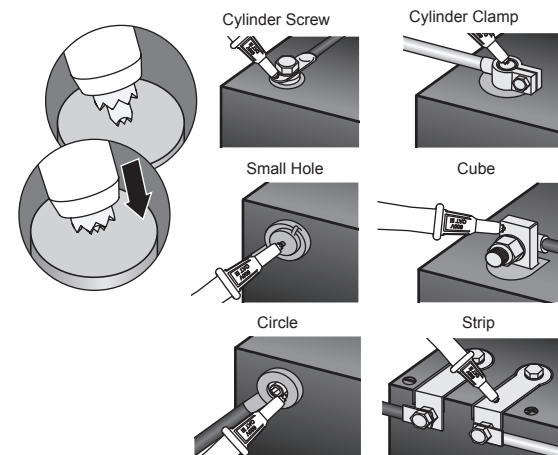
V



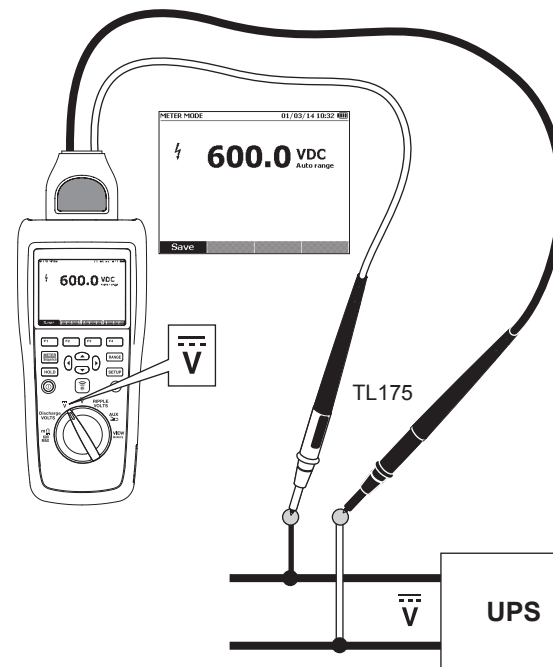
mΩ / Discharge Volts / Ripple Volts / 内阻 / 放电电压 / 纹波电压



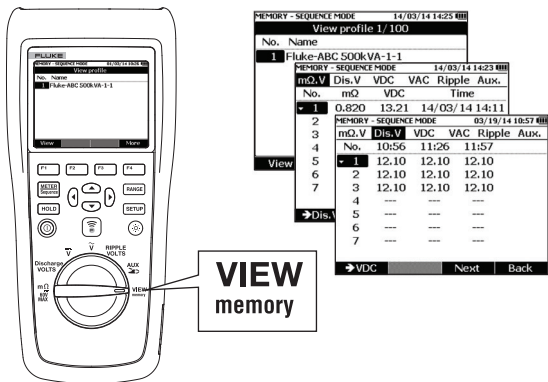
Connect Test Probes / 连接测试探针



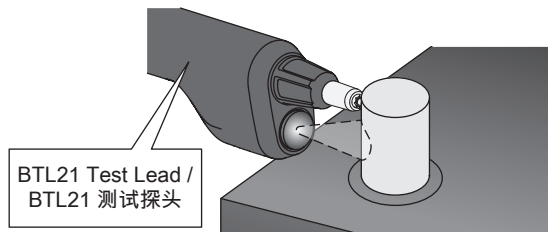
TL175 Operation / TL175 操作



View Memory / 查看存储



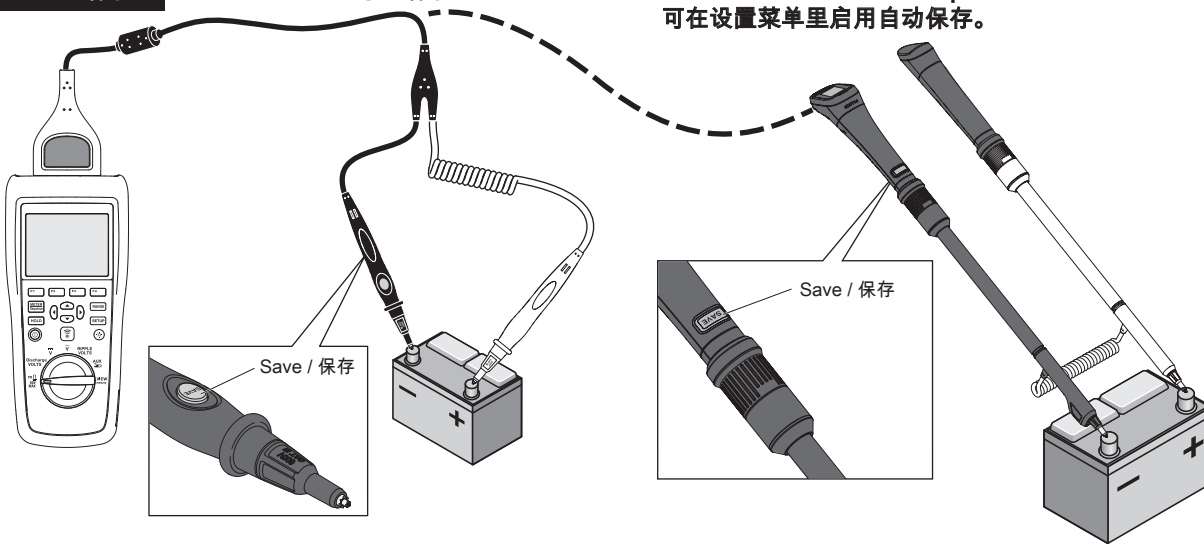
Temperature (BT521 Only) / 温度 (仅限BT521)



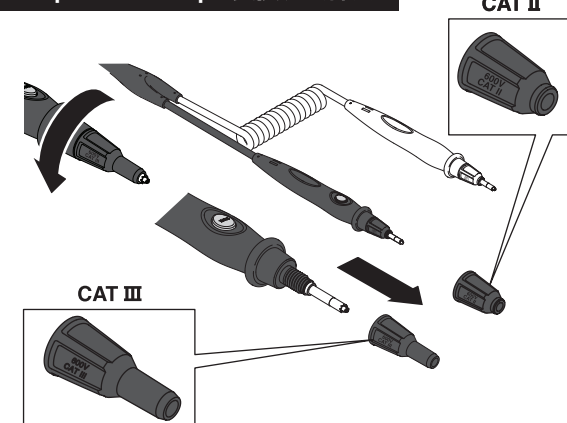
Save / 保存

Manual Save / 手动保存

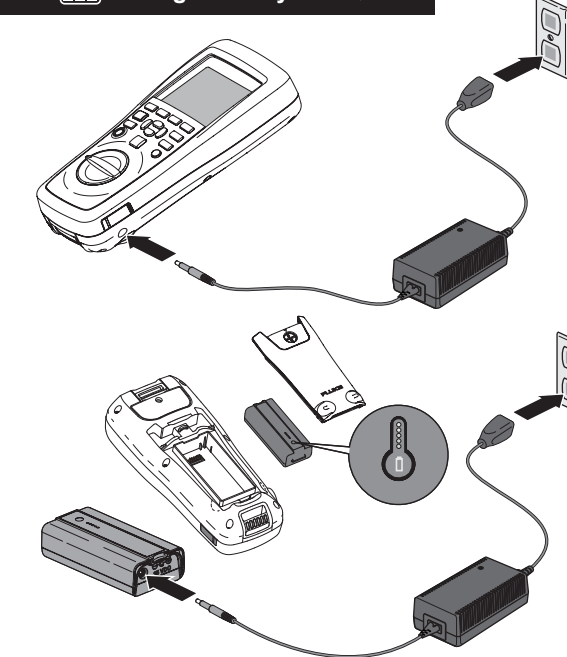
Enable Auto Save in Setup Menu / 可在设置菜单里启用自动保存。



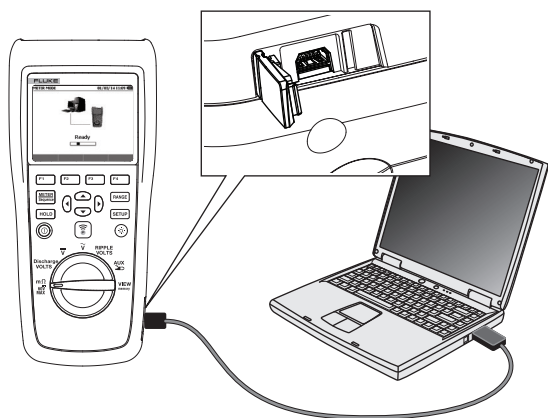
Replace Test Tip / 更换测试探头



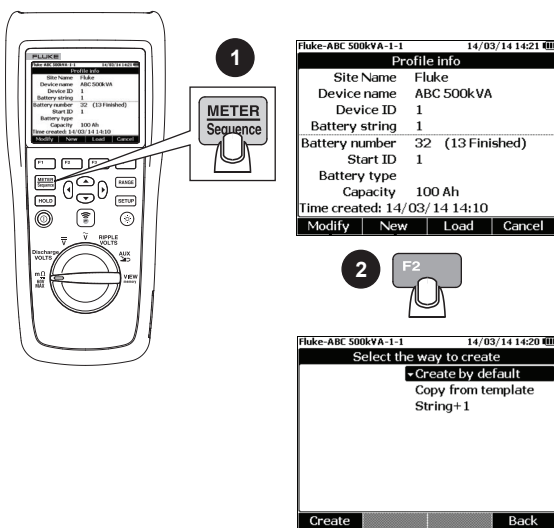
Charge Battery / 电池充电



Upload / Download Data / 上传/下载数据



Meter / Sequence / 切换到Meter 模式 / 切换到Sequence 模式



Calibration ("0-Ohm") / 校准 (0-Ohm)

