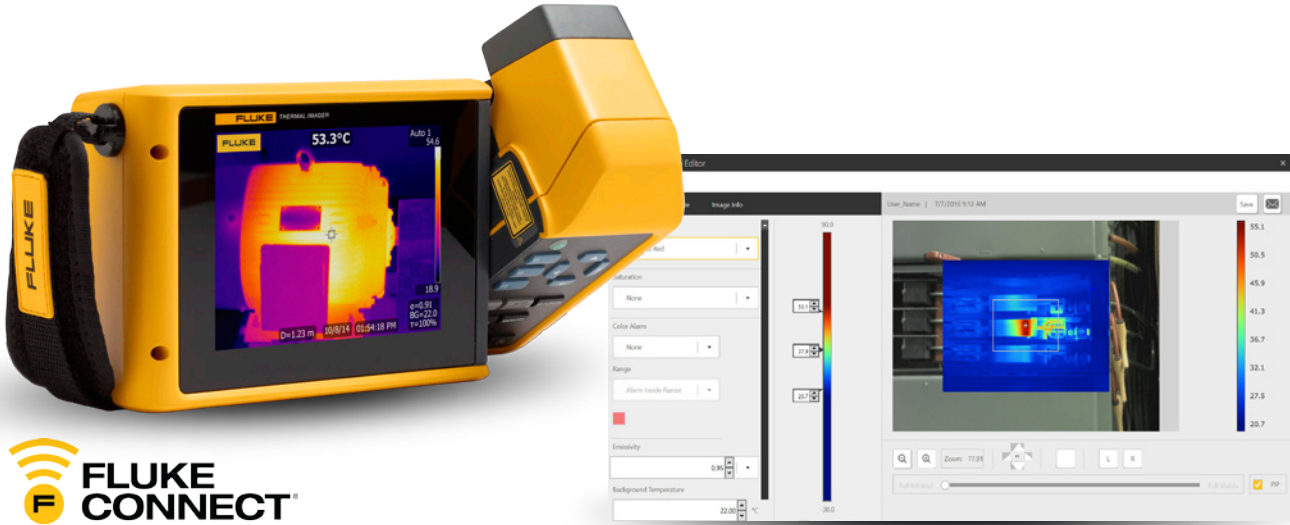


New, powerful Fluke Connect® SmartView® for Thermal Imaging

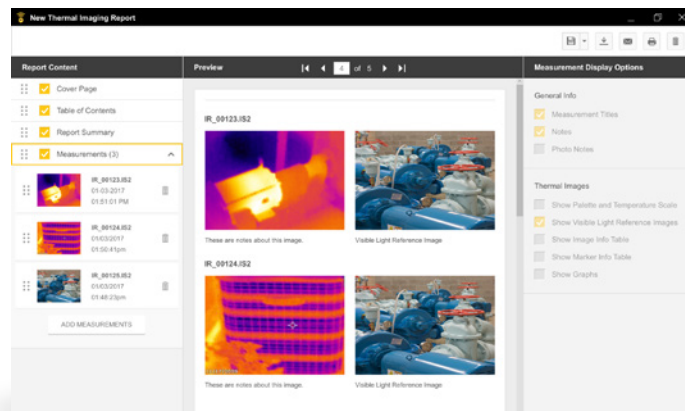


Fluke Connect SmartView software for thermal imaging makes it easier than ever to quickly optimize thermal images, perform analytics, generate quick, customizable, templates and reports, and export images in multiple formats to the Fluke Connect® Cloud.

Fluke Connect SmartView is part of Fluke Connect—a system of more than 50 wireless test tools that communicate via the Fluke Connect app, or Fluke Connect Assets software, a cloud-based solution that gathers measurements to provide a comprehensive view of critical equipment status, allowing technicians to save and share thermal images instantly.

The Fluke Connect system enables faster decision making by providing access to maintenance records simultaneously at the inspection site and from the office or an off-site location.

Images sync wireless directly from the camera to the Fluke Connect Cloud, so images can be attached to an asset record. It also keeps a measurement history for trending information. PDF reports can be created and shared directly from the job site via email. You can also search reports from a list of reports, sort reports and have a live report preview.



Create custom templates and reports.

Feature comparison

	SmartView® Desktop	Fluke Connect® SmartView®
Camera support		
VT	•	
Ti10/25	•	
Ti32	•	
Ti40FT/45/50/55	•	
Ti90/95	•	•
Ti100/110/125	•	•
TiS10/20/40/45/50/55/60/65/75	•	•
Ti200/300/400/450	•	•
TiX500/580	•	•
TiX620/640/660/1000	•	•
Tool connection		
USB connection	•	•
Wi-Fi connection	•	•
Enable BLE/Wi-Fi radio	•	•
GigE connection	•	•
Tool support		
Detect firmware update	•	•
Update firmware	•	•
Register thermal imagers		•
Enable radios		•
Measurements		
Import thermal images	•	•
View thermal images	•	•
View thermal image measurement history		•
Filter thermal images		•
Search thermal images		•
Sort thermal images		•
Fluke Connect® Cloud		
Cloud syncing		•
Email measurement		•
ShareLive™		•
View thermal images		
Toggle PIP	•	•
Rotate image	•	•
Adjust IR-Fusion® blending	•	•
Multiple views—preview pane, tile view and list view		•
Optimize thermal images		
Adjust level and span	•	•
Adjust parallax	•	•
Zoom in/out	•	•
Change palette	•	•
Adjust saturation	•	•
Add color alarms	•	•
Change emissivity	•	•
Change background temp	•	•
Change temperature units	•	•
Change transmission	•	•
Batch optimize thermal images	•	•
Analyze thermal images		
Add markers	•	•
Display markers	•	•
View standard markers	•	•
Edit markers	•	•
Delete markers	•	•
Compare multiple thermal images		•
Batch analyze thermal images		•

	SmartView® Desktop	Fluke Connect® SmartView®
Annotations		
IR-Photo note support	•	•
Text note support	•	•
Audio note support	•	•
Reporting		
Create thermal images report	•	•
Export report as PDF		•
Email PDF report		•
Search reports from a list of reports		•
Sort reports		•
Live report preview		•
Export report as DOC	•	•
Create custom report template		•
Click on report title to view/edit the report		•
Export		
Open IS2 from email		•
Export IS2 as BMP, JPG, PNG, GIF, TIFF	•	•
Export temperature data as CSV	•	•
Export graphs	•	•
Export temperature data as XLS	•	•
Remote control thermal imaging		
Live stream from camera	•	•
View/duplicate camera GUI	•	•
Capture image	•	•
Adjust IR-Fusion® blending	•	•
Activate LaserSharp AutoFocus	•	•
Video recording		
Record IS3 video	•	•
Optimize video	•	•
Live graphing marker data from video	•	•
Open IS3 video	•	•
Advanced analytics		
Line graph	•	•
X-profile graph	•	•
Y-profile graph	•	•
Histogram	•	•
3D-IR	•	
Offline mode		
Sign in and access the app without internet connectivity		•

*Products may not be available in all countries

Fluke. Keeping your world up and running.®

Fluke Corporation
PO Box 9090,
Everett, WA 98206 U.S.A.

Fluke Europe B.V.
PO Box 1186, 5602 BD
Eindhoven, The Netherlands

For more information call:
In the U.S.A. (800) 443-5853 or Fax (425) 446-5116
In Europe/M-East/Africa +31 (0)40 267 5100 or Fax +31 (0)40 267 5222
In Canada (800)-36-FLUKE or Fax (905) 890-6866
From other countries +1 (425) 446-5500 or Fax +1 (425) 446-5116
Web access: <http://www.fluke.com>

©2016, 2017 Fluke Corporation. Specifications subject to change without notice.
Printed in U.S.A. 4/2017 6008624c-en

Modification of this document is not permitted without written permission from Fluke Corporation.