

Five Reasons Upgrading to Versiv™ Will Save You Money

Introduced in 2004, the Fluke Networks DTX CableAnalyzer™ has become the world's most popular tool for certifying premises copper and fiber cabling, with billions of links certified. Built with legendary Fluke Networks ruggedness and reliability, you might want to use it forever. But that will be a very costly plan. Fluke Networks' new Versiv cabling certification system is designed to save you money in every phase of the cable testing job and to get to systems acceptance faster.

1. Faster Set Up

Waiting for your expert to set up the tester wastes time. Setting it up wrong can waste a lot more when an entire day's work isn't done to spec.

Versiv's ProjX™ management system makes setup easy and foolproof. Enter the testing details for the job once, and your techs are given the choice of only the correct tests for that job – especially valuable when the tester moves from job to job. The LinkWare™ Live cloud service even lets you set up your testers and Brother label printers¹ without bringing them back to the office. And Versiv lets users enter data many times faster through a modern smartphone interface instead of hunting and pecking with the DTX's arrow keys.

2. Faster Testing

The DTX set records with its testing speed. But Versiv is even faster: more than twice as fast for Cat 6A and four times as fast for fiber loss testing. And that's just warming up.

Versiv accelerates fiber testing with features that aren't available on the DTX. The Smart Loop™ feature lets you perform an OTDR test on two fibers at once and provides averaged bi-directional results instantly without moving the tester to the other end. Quad modules mean you don't have to hunt for and switch to the other module when you're doing a mixed multimode / singlemode job. And Versiv automatically grades fiber endfaces in about a second – something the DTX can't even do manually.

Waiting is the opposite of fast – but if your DTX battery is fully drained, you have to plug in and wait up to 15 minutes. With Versiv, you just plug it in, and start testing. Don't waste time hunting for your testers. LinkWare Live tracks where your tester last synced.

And for links that fail, Versiv offers second generation diagnostics that pinpoint more problems in simple terms so your team can fix them fast.

3. Reduced Mistakes

Call-backs can turn a profitable job into an unprofitable one. That's why Versiv is designed to eliminate mistakes. With the DTX, it's not

hard to select the wrong limits.

When you do, all the tests need to be run all over again. But with Versiv's ProjX management system, your techs can only choose the tests that you define for the specific job. LinkWare Live lets you track testing the status of each job from any mobile device, down to the level of each individual test. It will even indicate when unexpected tests are being performed and warn you that the tester needs calibration before it's too late².

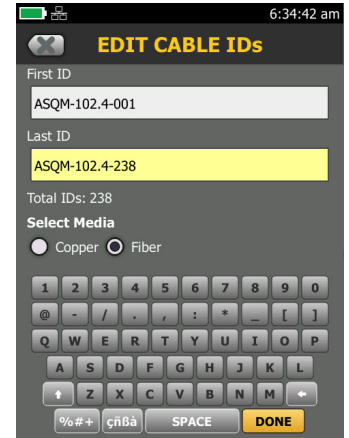
Setting the fiber reference is a complex task on the DTX, and if it's done wrong, every subsequent measurement is invalid – and your techs might not even know. But Versiv leads the tech through this critical process, eliminating "negative loss" measurements that can result if it's done wrong. With so many ways of preventing and warning you of errors, you might forget the meaning of "call-back".

4. Faster Reporting

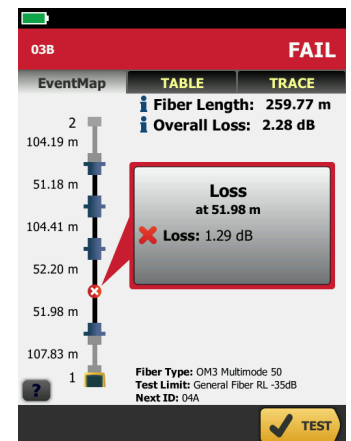
Since Versiv uses the same LinkWare software as the DTX, there's no learning curve when it comes to reporting. But Versiv's faster reporting might take some getting used to. Instead of hauling testers or memory cards back to the office, just upload the results from Versiv to the LinkWare Live cloud service, which automatically assigns the right tests to the right job – across all your testers. No more hunting for those missing tests. Versiv also provides 48 times more internal test storage than the DTX, and unlimited storage externally using USB devices or the cloud service.

5. Future Ready

Investing in Versiv means you'll also be ready to take on new jobs from Cat 5 to Cat 8. Versiv supports future measurements such as TCL and resistance unbalance that your DTX never will. Certify coax and standard or industrial Ethernet patch cords in both directions. Test singlemode fibers that are more than ten times as long. And the modular design means you can add new capabilities without buying a new tester.



A full keyboard for faster data entry than the DTX



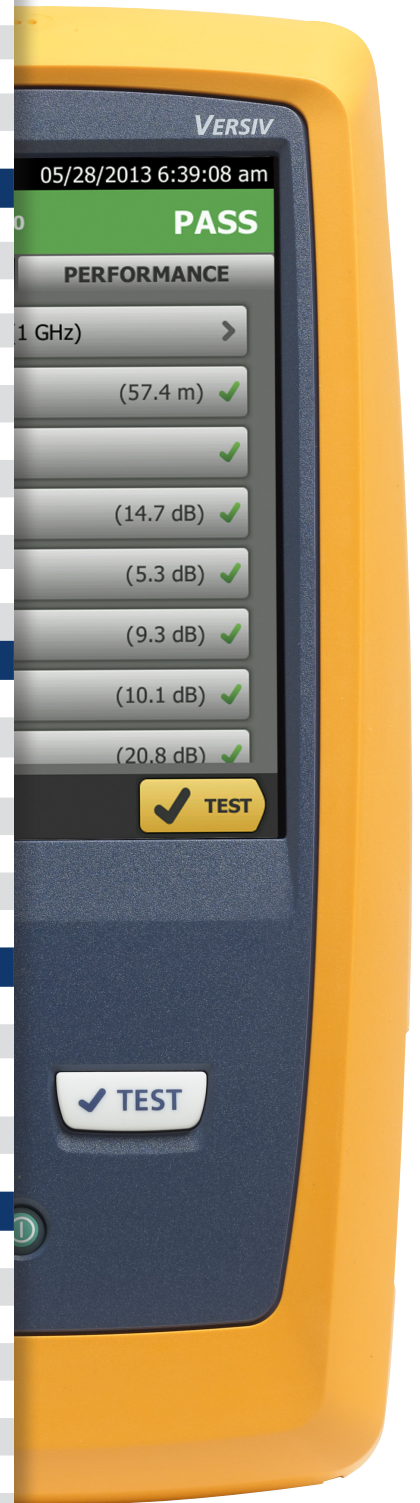
The most advanced diagnostics tell you exactly what needs to be fixed

Project Name	Status	Last Update
EVERETT	HOWELL HIGH SCHOOL	Updated 30 days ago
	09 Mar 2015	916 4 days
	CVILLE	
	ST. PETERS HOSPITAL	Updated 30 days ago
	01 Apr 2015	156 10 days
	MID RIVERS	Updated 30 days ago

Track the status of jobs from smart devices

See How Versiv™ Stacks Up Against Your DTX

	Versiv	DTX
Faster Set Up		
ProjX Management System	✓	
User Interface	SmartPhone	Softkeys
Data Entry	Touchscreen Keyboard	Arrow / Entry Keys
Download Test Setups from LinkWare Live	✓	
Share Data with Brother Labelers ¹	✓	
Faster Testing		
Cat 6A / Class E _A Test Time	8 sec	22 sec
Next Generation Copper Diagnostics	✓	
Fiber Loss Test Time	3 sec	12 sec
OTDR Test Time (per wavelength)	2 sec	15 sec
Quad Loss Test Module	✓	
Summary screen displays loss of both fibers	✓	
Autosensing Bi-Directional Loss Testing	✓	
Bi-Directional OTDR Testing (with Instantly Averaged Results ³)	✓	
EventMap™ Fiber Diagnostics	✓	
Automated Fiber Inspection per IEC 61300-3-35	1 sec	
Drained Battery Wait Time	No wait	15 min
Track last location "synced" with LinkWare Live ²	✓	
Reduced Mistakes		
Track Project Status from Smart Devices with LinkWare Live	✓	
LinkWare Live Reconciliation Alerts	✓	
LinkWare Live Calibration Alerts ²	✓	
Cat 8 G2 Compliant Shield Integrity Test	✓	
Automatic verification of TRCs with stored results	✓	
Animated Fiber Set Reference Wizard	✓	
Fails Negative Loss Results	✓	
Faster Reporting		
LinkWare Software	✓	✓
Internal Storage (Cat 6A with plot data)	12,000 results	250 results
Storage Options	USB: 64 GB max LinkWare Live : Unlimited	SD/MMC: 2 GB max
Upload / consolidate results from anywhere with LinkWare Live	✓	
Fiber Inspection Reports	✓	
Future Ready		
Category 8 Certification	✓	
Calibrate copper module without mainframe	✓	
Integrated Alien Crosstalk	✓	
Transverse Conversion Loss Measurement	✓	
Resistance Unbalance Measurement	✓	
Bi-Directional Patch Cord Certification	✓	
Coax Certification per ANSI/TIA-568-C.4	✓	
Maximum Copper Frequency Range	2000 MHz	600 MHz
Certify RJ45-to-M12 patch cords	✓	
Maximum OLTS Range (MM / SM)	12 km / 130 km	5 km / 10 km
Maximum OTDR Range (MM / SM)	35 km / 130 km	6 km / 20 km



¹ Visit flukenetworks.com/LabelLink for details.

² Visit www.flukenetworks.com/linkwarelive/countries for availability.

³ SmartLoop™ Patent Pending
Specifications subject to change