

Recommended power generation solutions

Multifunction Calibrators

Best suited for:

- Troubleshooting and calibrating 4-20 mA loops, temperature, pressure and frequency input instruments in one tool
- Document the performance of temperature and calibrate pressure switches and transmitters

Power generation applications:

Measure, source, and simulate dc loop current pressures and temperatures to assist in meeting quality or minimizing measurement errors in custody transfer. Pressure and temperature transmitter calibration; calibration and configuration of HART devices; documenting field calibrations for recall and upload. Assist in documenting the performance of EPA or NRC regulated devices.

Temperature calibrators

Best suited for:

- Troubleshooting and calibrating temperature instrumentation
- Testing temperature sensors
- Measuring and sourcing thermocouples and RTDs, plus volts and ohms into control system I/O

Power generation applications:

Measure thermocouples, ohms, and volts to test sensors and transmitters by sourcing/simulating thermocouples, RTDs, volts and ohms; executing remote tests with auto step and auto ramp; powering transmitters during test using loop power supply with simultaneous mA measurement; calibrating linear TC transmitter; calibrating thermal imagers and infrared thermometers.

Pressure calibrators

Best suited for:

- Calibration of pressure transmitters, gauges and switches
- Maintenance of almost any pressure device using pressure sourcing and milliamp measurements
- Calibrating pressure and I/P instruments with simultaneous pressure and current measurement

Power generation applications:

Pressure measurements using internal sensor; measure mA while sourcing. Precise manual or automatic pressure control. Ensuring safety of pressure containment vessels.

Flow calibrators

Best suited for:

- Calibration of leak rate monitors/testers

Power generation applications:

Ensuring leak integrity of containment nuclear containment area.

Pressure gauges and comparison test pumps

Best suited for:

- Calibrating pressure gauges

Power generation applications:

Provides a known stable reference pressure of higher accuracy for detecting and correcting errors in the pressure measuring device being tested.

More recommended power generation solutions

Baths and dry-wells

Best suited for:

- Calibration of dial thermometers
- Calibration of RTDs and thermocouples
- RTD and thermocouple calibration check
- Temperature controller loop calibration
- Temperature transmitter and sensor combined calibration
- Temperature switch test

Power generation applications:

Provides a stable reference temperature for comparing temperature measuring equipment against a standard of higher accuracy to detect and correct errors in the device being tested. Used for testing components of control and monitoring systems.

Precision thermometers and probes

Best suited for:

- Contact temperature measurement in fluids
- Contact temperature measurement in thermowells and test wells for in situ comparisons with controllers, displays, and gauges.
- Use as an external reference thermometer to improve calibration accuracy
- Logging temperatures

Power generation applications:

Provides a more accurate reference temperature for checking and calibrating temperature measurement equipment. Use to detect errors in other instruments to simply to determine temperature precisely. Intrinsically safe models such as the 1551 Ex may be used in potentially explosive atmospheres.



FLUKE®

FLUKE®



Power and utilities industry calibration solutions

The power and utilities industry is a demanding and diverse environment that requires reliable instruments that are both accurate and rugged. Whether you're working in power generation, transmission, distribution, or installation, you need accurate tools that you can count on for the bench and the field.

With Process Calibration solutions from Fluke and Fluke Calibration for electrical, multifunction, mA loop, temperature, pressure and flow applications, you can find the right tools for the challenges you face every day.

Fluke. *The Most Trusted Tools in the World.*

Fluke Corporation
PO Box 9090, Everett, WA 98206 U.S.A.

Fluke Europe B.V.
PO Box 1186, 5602 BD
Eindhoven, The Netherlands

For more information call:
In the U.S.A. (800) 443-5853 or
Fax (425) 446-5116
In Europe/M-East/Africa +31 (0) 40 2675 200 or
Fax +31 (0) 40 2675 222
In Canada (800)-36-FLUKE or
Fax (905) 890-6866
From other countries +1 (425) 446-5500 or
Fax +1 (425) 446-5116
Web access: <http://www.fluke.com>

©2013 Fluke Corporation.
Specifications subject to change without notice.
Printed in U.S.A. 6/2013 426466A_EN
Pub-ID 1202-eng

Modification of this document is not permitted
without written permission from Fluke Corporation.

Facility Maintenance/ Process Technician

Focus: power generation

What issues do you face?

- Ensuring continuous and predictable uptime and downtime
- Safety of personnel and the utility environment
- Budget restrictions
- Troubleshooting process interruption with immediate response and repair

Fluke solutions:

- Multi-function and loop tools
- Temperature calibration tools
- ⬆ Pressure calibration tools
- ↔ Flow calibration tools

Engineer

Focus: process design and improvement

What issues do you face?

- Specifying equipment to meet regulations and requirements
- Preventing downtime

Fluke solutions:

- Temperature calibration tools
- ⬆ Pressure calibration tools
- ↔ Flow calibration tools
- Multi-function and loop tools
- ▲ Electrical calibration tools

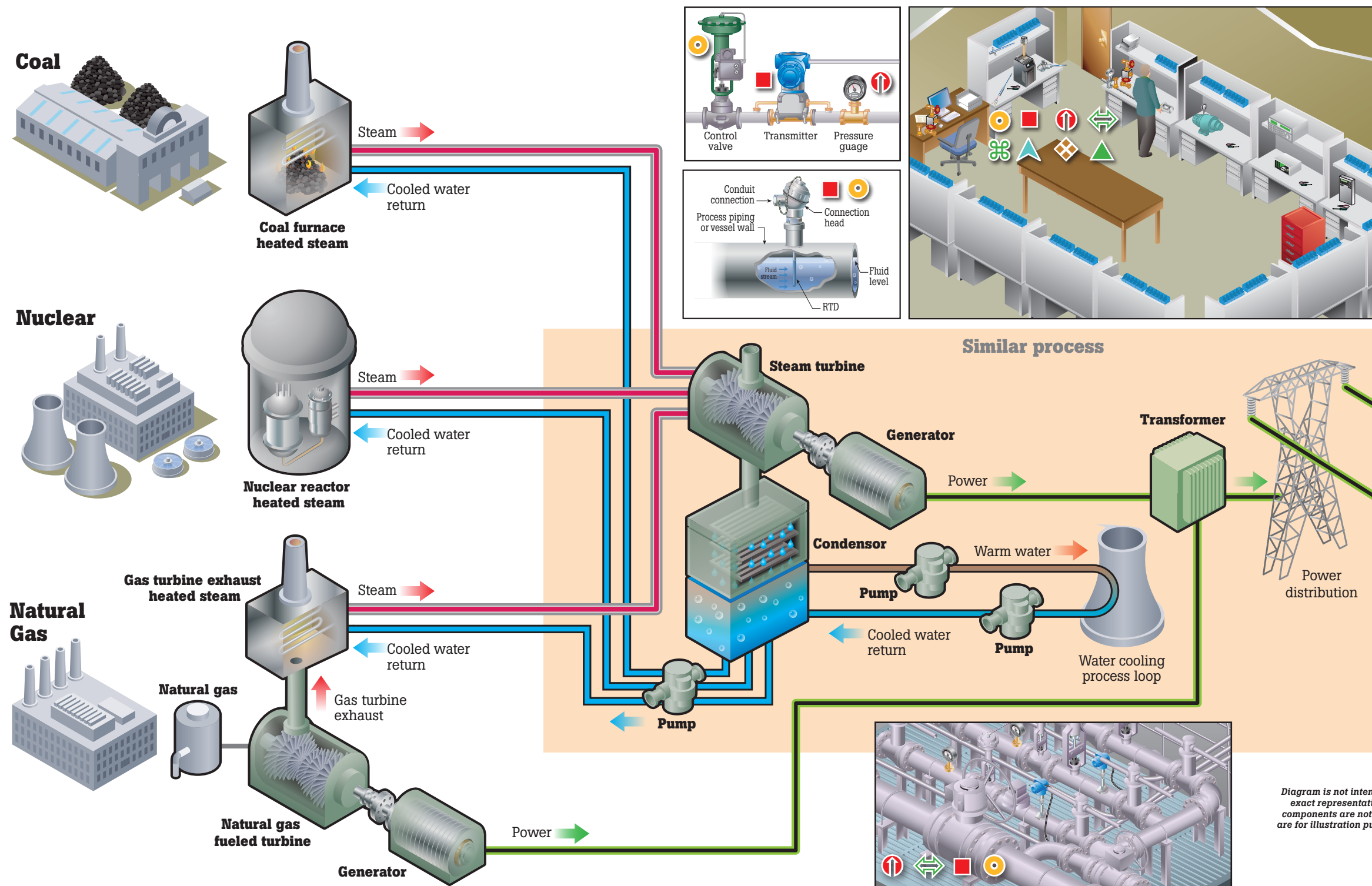


Diagram is not intended to be an exact representation. Diagram components are not to scale and are for illustration purposes only.



Control room



Quality/compliance/regulatory



Field locations



Cal lab/instrument shop

Instrument Technician

Focus: testing, maintenance and repair of equipment, instruments and systems

What issues do you face?

- Downtime prevention
- Safety systems testing
- Troubleshooting process interruption with immediate response and repair
- Leak rate testing

Fluke solutions:

- Temperature calibration tools
- ⊕ Multi-function and loop tools
- ⬆ Pressure calibration tools
- ↔ Flow calibration tools

Industrial calibration technician

Focus: calibrating measurement devices

What issues do you face?

- Making accurate measurements
- Documenting procedures
- Increasing throughput

Fluke solutions:

- Temperature calibration tools
- ⬆ Pressure calibration tools
- ↔ Flow calibration tools
- ◆ Standards
- ▲ Electrical Calibration

Fluke power generation solutions

Learn how Fluke solutions can save you time and money while increasing your productivity at www.fluke.com/petrochem. Based on you. Built by Fluke.

Multi-function and loop tools					Temperature calibration tools					Pressure calibration tools					Electrical calibration	Software			
mA Loop Calibrator	Multi function calibrators				Baths and dry-wells			Infrared thermometer calibrator	Precision thermometers and probes		Handheld pressure calibrators		Pressure gauges and comparison test pumps		Deadweight testers		Bench pressure controller/calibrator	Precision multimeter	Software solutions
773 Milliamp Process Clamp Meter	726 Precision multifunction calibrator	754 Documenting Process Calibrator-HART	789 ProcessMeter™ with 250 Ohm HART resistor	7526A Precision Process Calibrator	7102 Micro-Bath Thermometer Calibrators	914X Field Metrology Wells (temp and mA Loop)	9102S Handheld Dry-Well	418X Precision Infrared Calibrators	1523/1524 Handheld Thermometer Readout	1551A Ex & 1552A Ex "Stik" Thermometer Readout	700P Differential Pressure Modules	719 Portable Electric Pressure Calibrator	700G Precision Pressure Gauge Calibrator	P5515 Comparison Test Pumps	P3100 Hydraulic Deadweight Testers	E-DWT-H Electronic Deadweight Tester	PPC4E Pressure Controller/Calibrator	8845A/8846A 6.5 Digit Precision Multimeters	750 SW DPC/TRACK2 Software