



AnalyzIR and Driver

Installation Instruction

Thank you very much for your purchase of our products. If you have any questions or needs, please feel free to contact us.

This user manual is intended for FOTRIC thermal imaging camera software, AnalyzIR.

This manual may contain information which is not technically accurate, may not match with the product's functions and operations, or may contain printing typos. We will update the contents of this manual according to the enhancement of the product's function and regularly improve or update the products or procedures described in this manual. The updated content will be added to the new version of this manual without prior notice.

© 2017, Fotric Precision Instruments. All rights reserved.

AnalyzIR and Driver Installation Instruction

Content

AnalyzIR and Driver Installation Instruction.....	3
1. Software Installation Precautions	4
2. AnalyzIR Software Installation.....	6
2.1. Operation system requirement.....	6
2.2. Installation of AnalyzIR software.....	7
2.3. User manual.....	7
3. How to use the hand-help thermal camera for the online test, USB driver installation.....	8
3.1. Disable driver signature enforcement.....	8
3.2. USB driver installation.....	12
4. Contact Us.....	18

***Please read this instruction before the installation.**

1. Software Installation Precautions

1. Make sure that you are using Windows XP, Windows 7, Windows 8, or Windows 10 with .NET Framework 3.5 installed, and that you are using a 32-bit or a 64-bit operating system.
2. You must be an administrator or a user with administrator privileges to install the program. After installation, you need to run the program as the administrator. You can find the AnalyzIR.exe file under the installation directory, and then right-click Properties → Compatibility → Run this program as an administrator and save it. Installation directory:
 - 64-bit operating system C:\Program Files (x86)\Fotric\AnalyzIR;
 - 32-bit operating system C:\Program Files\Fotric\AnalyzIR.
3. During the installation process sometimes, Windows® may repeatedly warn that the software does not pass the Windows® test or trusted program, please select "Continue or always trust software from...". If you encounter antivirus software prompts please choose to always run and check the option that this software can be trusted.
4. The complete installation consists of multiple sub-installations, some of which are from third-party vendors. Do not stop these sub-installations as they are necessities for a complete installation
5. You may need to turn off the firewall and other antivirus software when connecting the thermal imager in case that a connection issue or screen problems occur. It is recommended to close the windows firewall. For other anti-virus software, you may close or add this program to the trust list.
6. If you want to use the reporting function, please make sure Office Word, Office Excel or WPS Word, WPS Excel are installed on the computer.

7. For the connection of the Fotric 220 series thermal cameras with a computer, USB driver needs to be installed. For details, please refer to section 3 -- How to use the hand-help thermal camera for the online test, USB driver installation.


2. AnalyzIR Software Installation

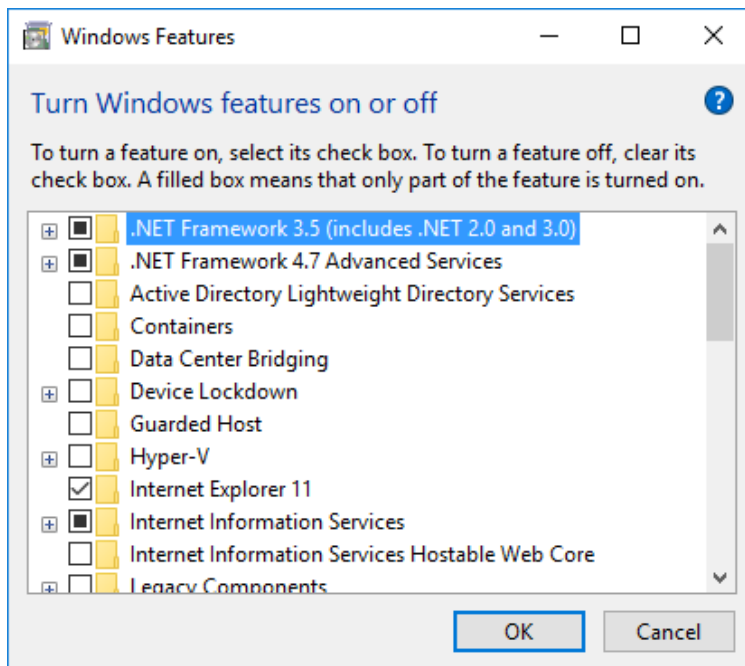
2.1. Operation system requirement

AnalyzIR supports the following operating systems (OS),

- ◆ Microsoft Windows XP (Need the installation of .NET Framework3.5. You can download from the internet and install automatically).
- ◆ Microsoft Windows 7, 32-bit
- ◆ Microsoft Windows 7, 64-bit
- ◆ Microsoft Windows 10, 32-bit pro and above. (Need to enable .NET Framework3.5).
- ◆ Microsoft Windows 10, 64-bit pro and above. (Need to enable .NET Framework3.5).

Enable .NET Framework in Win 10/8 as Figure below. The computer needs to connect the internet.

(Right click  → "Apps and Features" → "Programs and Features" → "Turn Windows Features on or off", pop up the window below.)



Hardware requirements

- ◆ Intel 2GHz Pentium processor (dual core), AMD Opteron, AMD Athlon64 or AMD Athlon XP processor (dual core) or later.
- ◆ 1GB or more memory
- ◆ 20GB available hard drive space

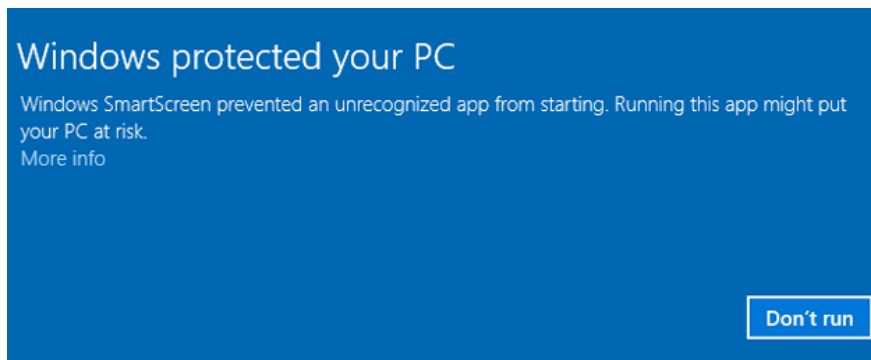
- ◆ Super VGA(1024x768) display or higher (Recommend 1400x or higher)
- ◆ Internet
- ◆ Audio output
- ◆ Keyboard and mouse

2.2. Installation of AnalyzIR software

Please follow the steps below to install AnalyzIR software.

- Turn off all applications.
- Locate and run the file **Analyz_***.EXE** file under the installation package.

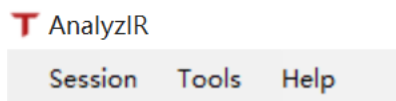
Note: You can click on "**More info**" link given in the message you saw and it'll provide 2 buttons: "**Run anyway**" and "**Don't run**". You can then click on "**Run anyway**" button to continue the installation. Sometimes, you may need to temporarily disable/turn off the antivirus software when new software installed in Windows OS.



- Follow the instructions on the installation wizard to proceed step by step.
- Locate the **AnalyzIR.exe** file under the installation folder
 - i. 64-bit operating system C:\Program Files (x86)\Fotric\AnalyzIR;
 - ii. 32-bit operating system C:\Program Files\Fotric\AnalyzIRand then right-click Properties → Compatibility → Run this program as an administrator, and save it.

2.3. User manual

After AnalyzIR launched, you can click the menu "Help" in the upper left menu bar and click the user manual to view the software operating instructions.



3. How to use the hand-help thermal camera for the online test, USB driver installation

Fotric 220 series thermal camera can be connected to AnalyzIR for the online test use. USB driver needs to be installed to connect the camera to the computer. The specific operations are as following.

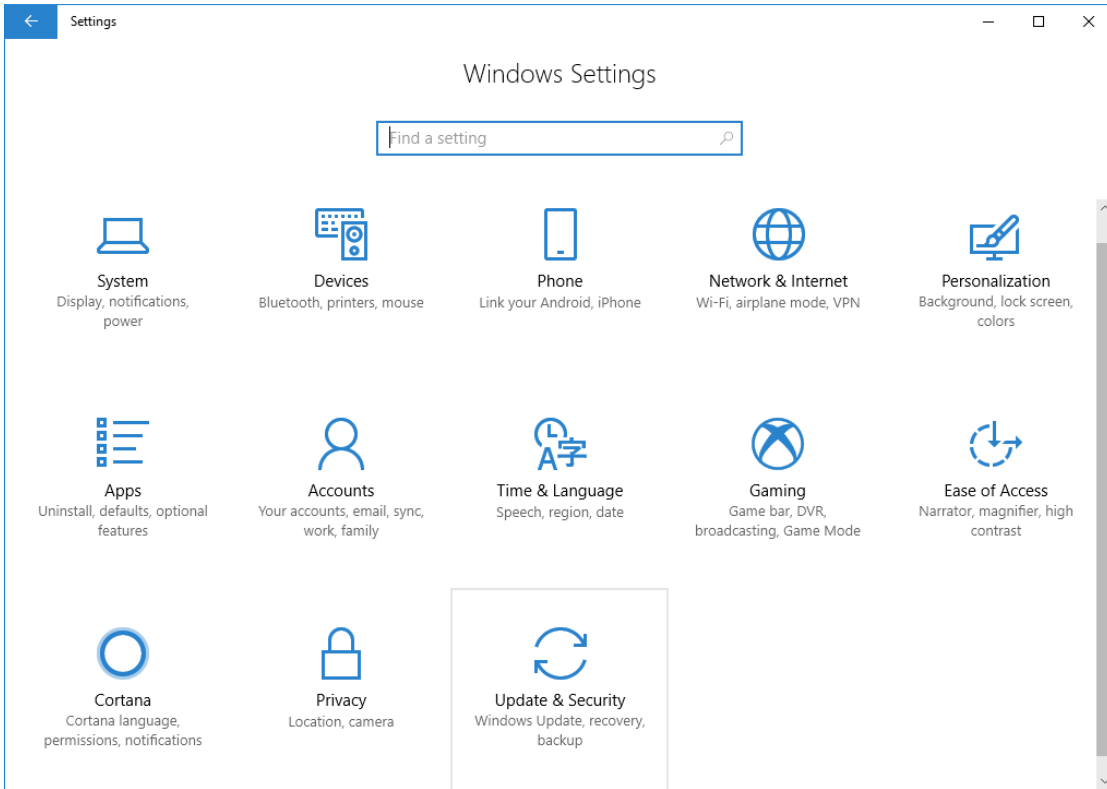
3.1. Disable driver signature enforcement

Follow the steps below for Windows 8 or Windows 10 operating system. Fotric will generally be automatically installed for Windows 7 or XP system. In case the driver is not installed correctly, please skip to section 3.2 for Windows 7 or XP system.

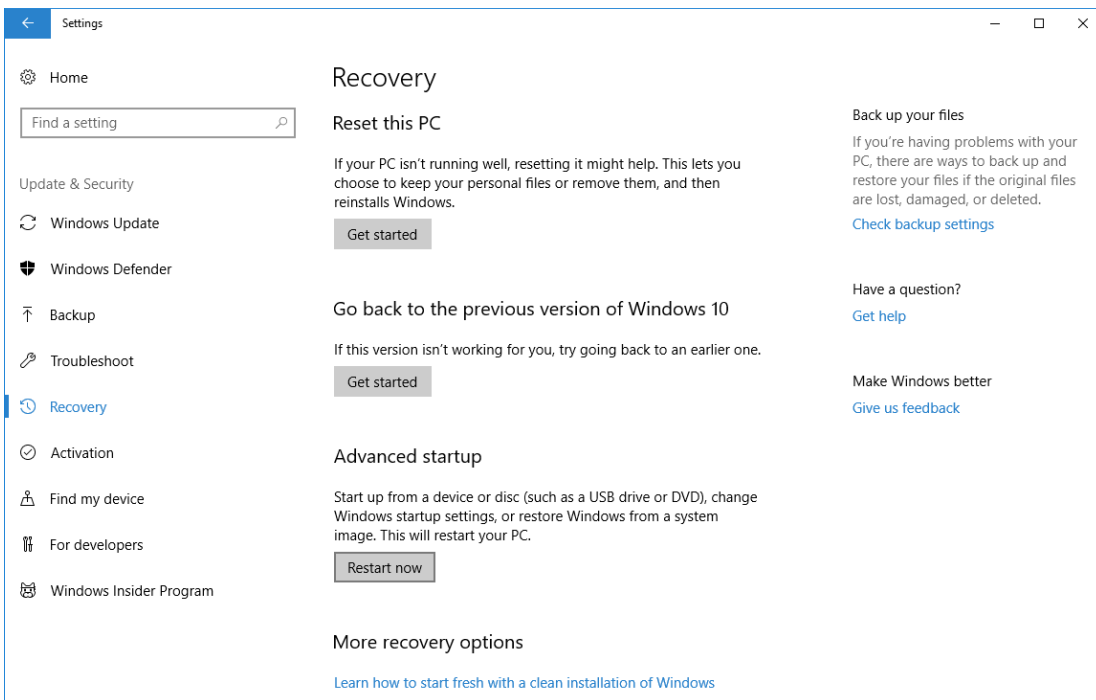
- a) Click “Setting” to pop up the setting window



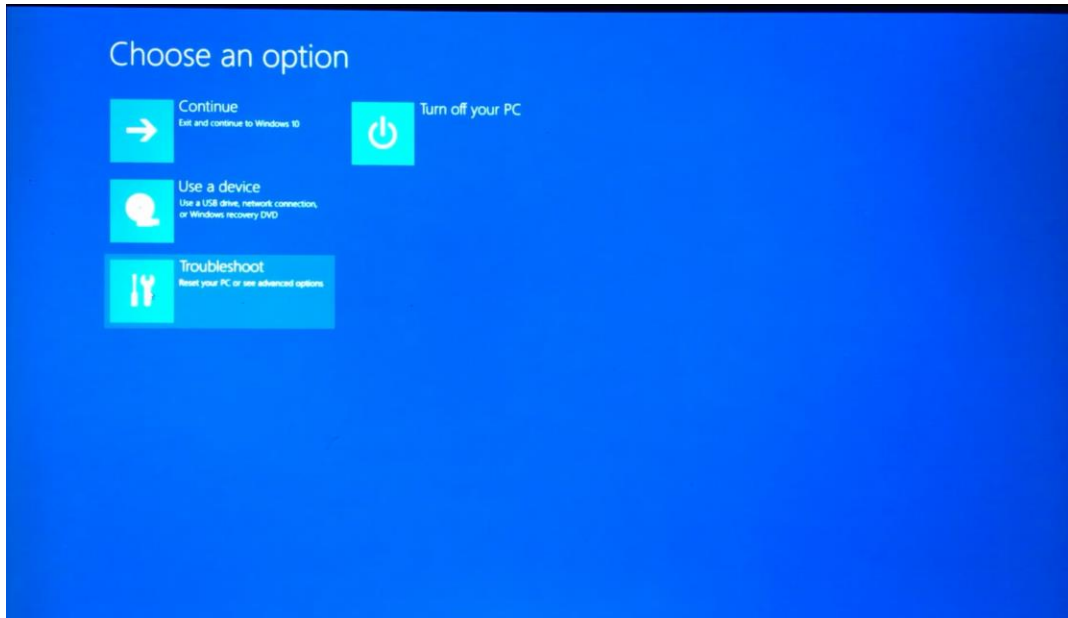
b) Click “Update and security” in the setting window.



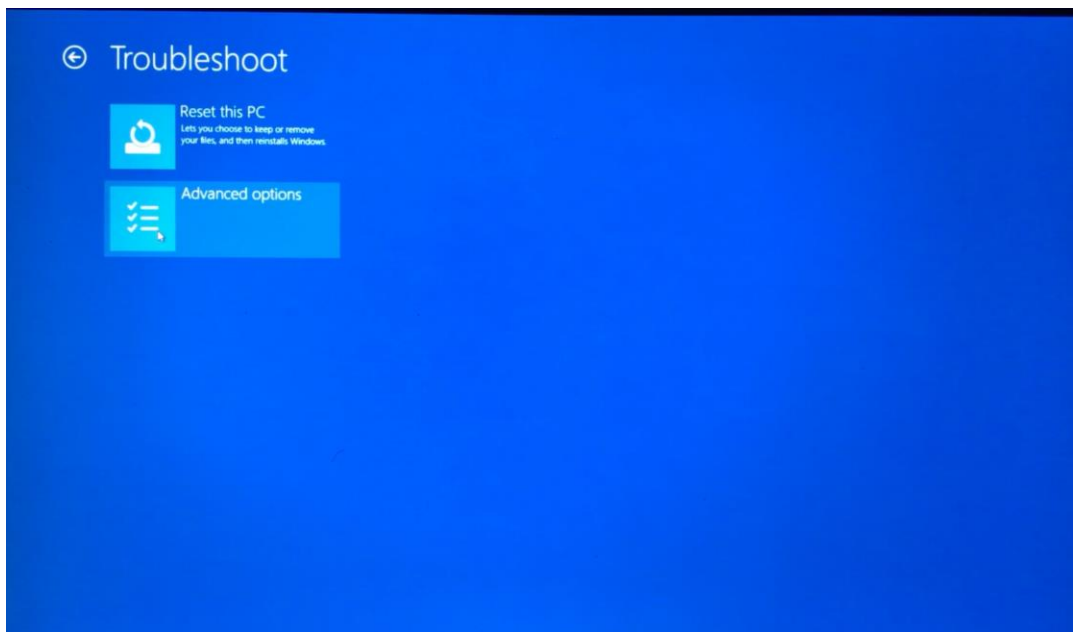
c) Click “Restore” or “Recovery” → “Restart now” under Advanced startup.



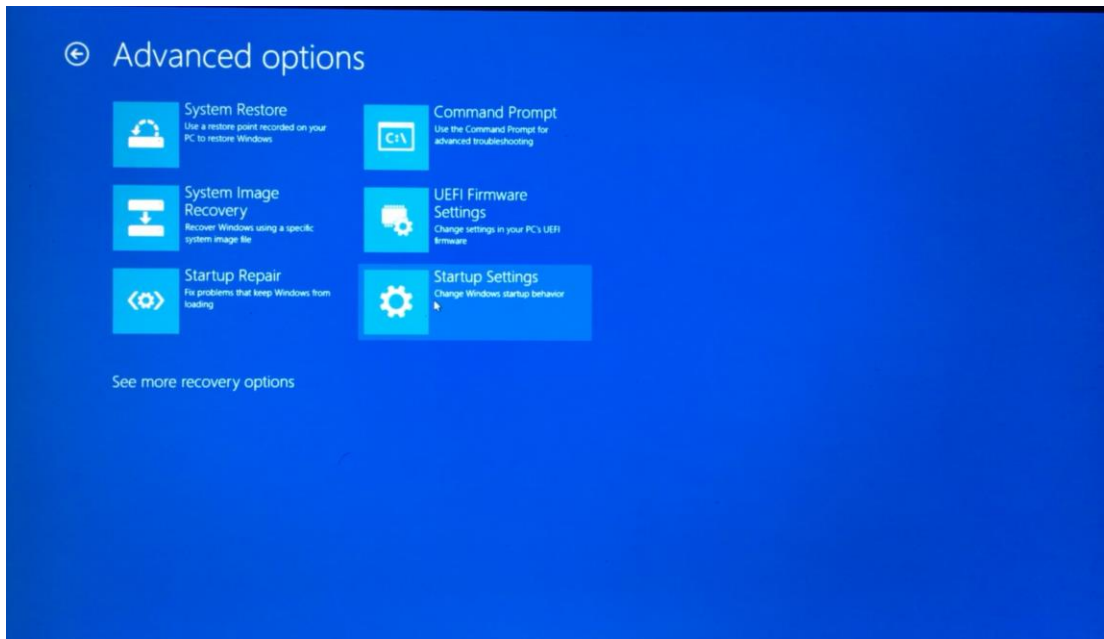
d) Select “Troubleshoot”



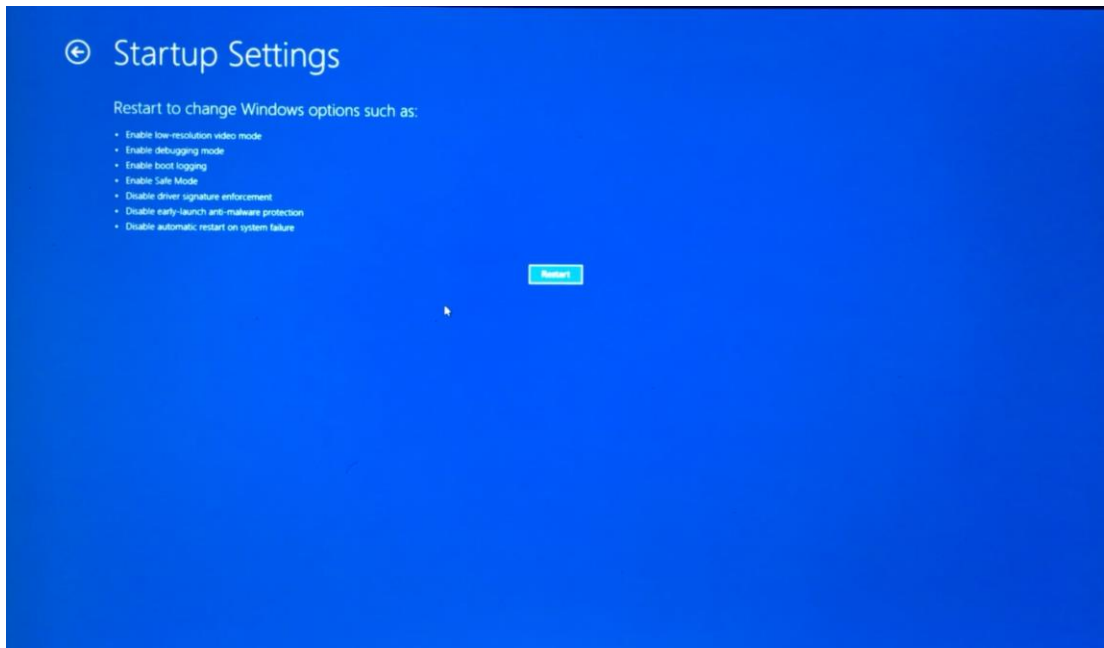
e) Select “Advanced options”



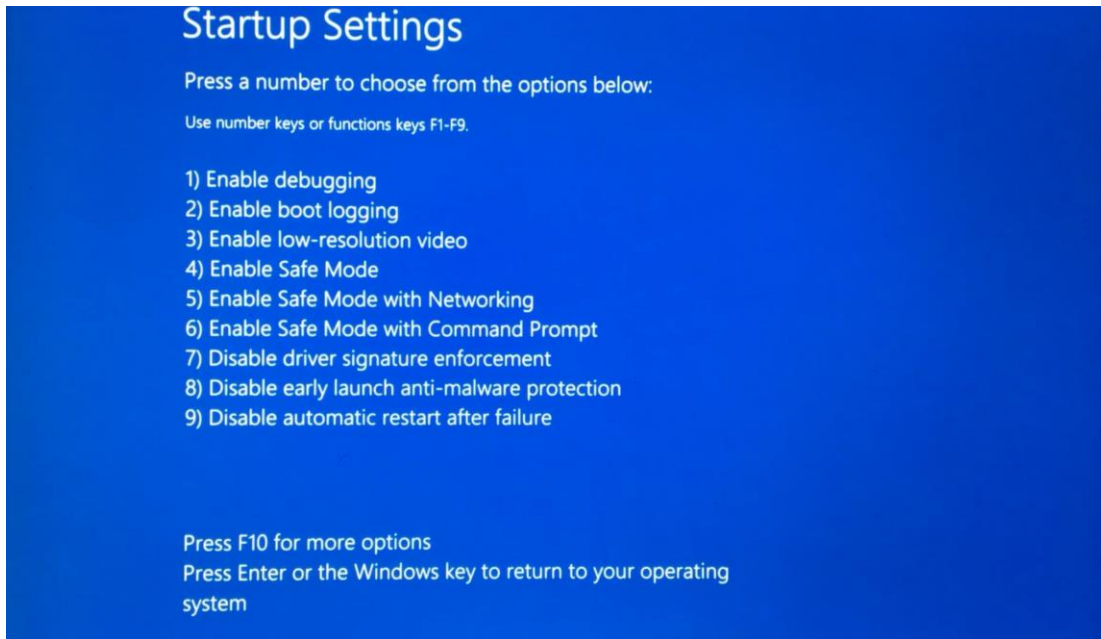
f) Select “Startup Settings”



g) Click “Restart”



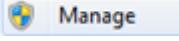
- h) Press “F7” (Fn+F7 for some laptops) to select “Disable driver signature enforcement”.

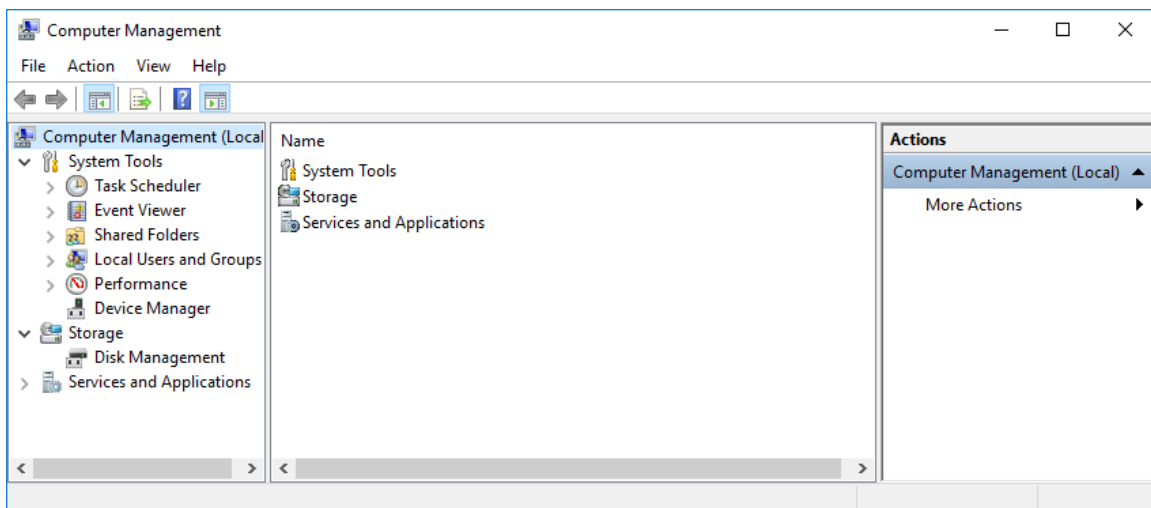
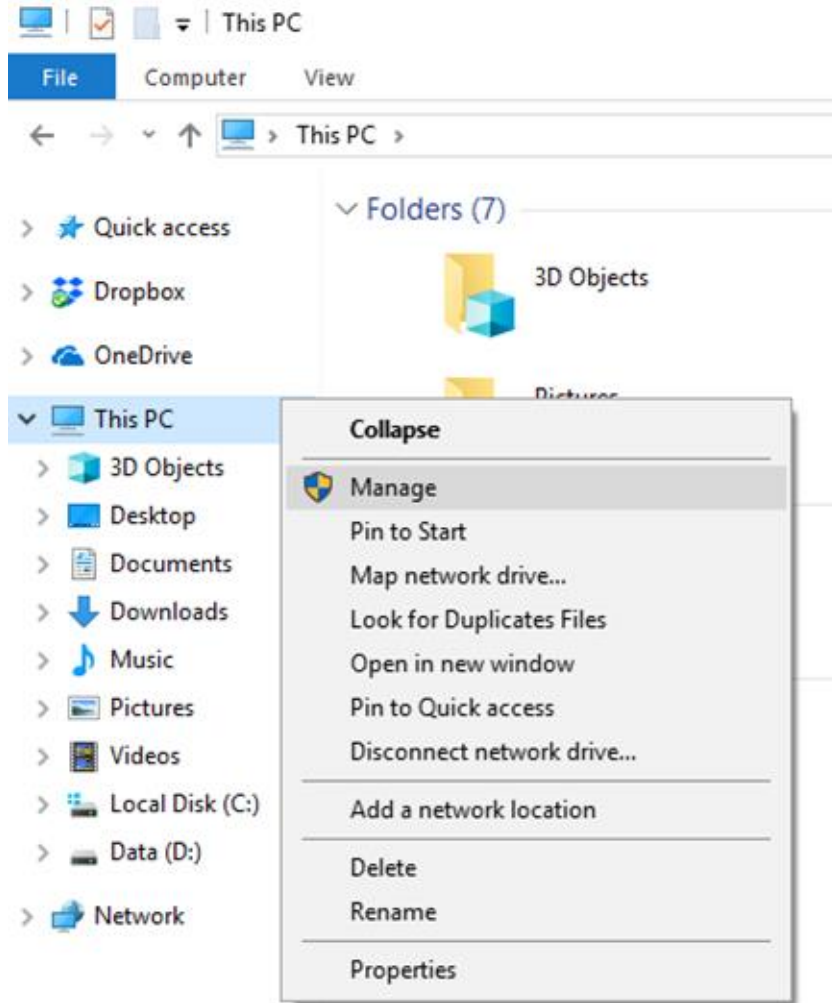



- i) After the computer is restarted, the need of digital signature of the driver is disabled. Follow section 3.2 to install the USB driver.

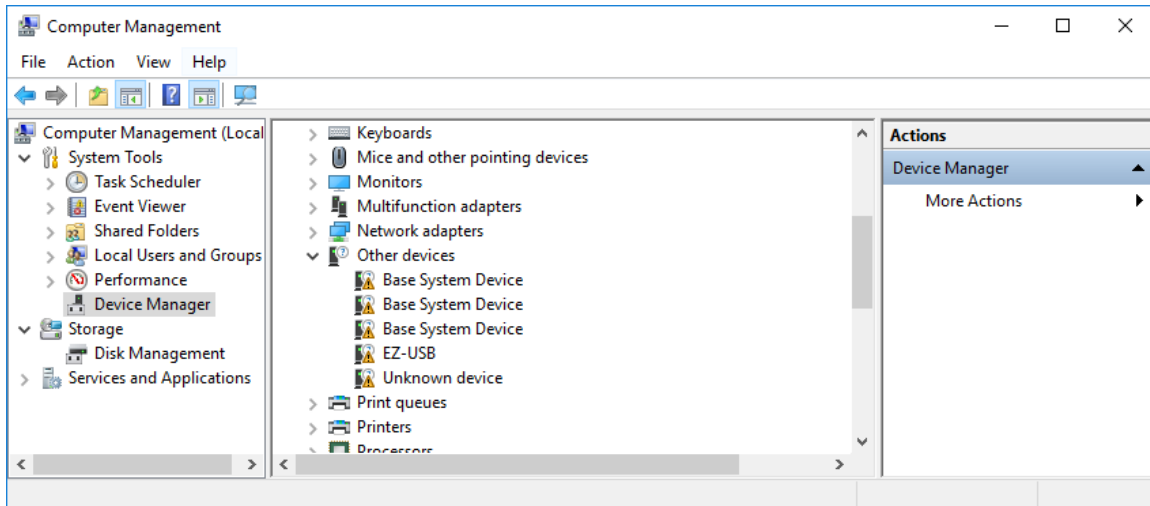
3.2. USB driver installation


Note: Connect FOTRIC thermal camera to the computer and power on the camera.

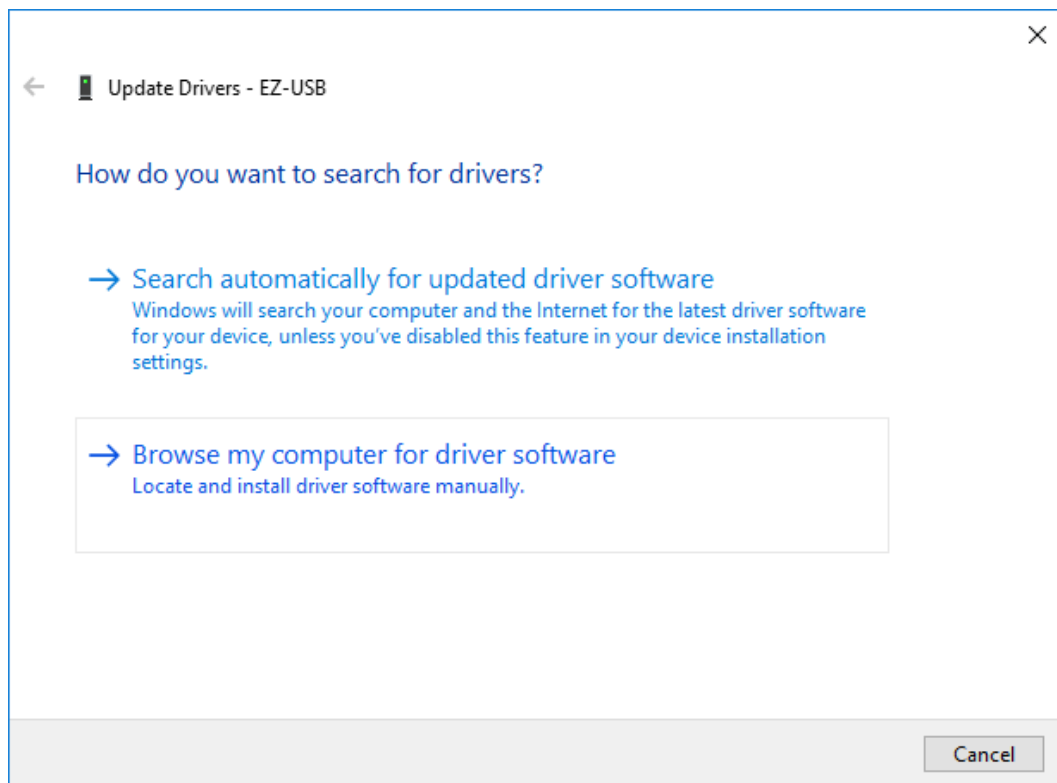
- a) Right click on “Computer” or “This PC” from File Explorer →  to pop up the “Computer Management” window.



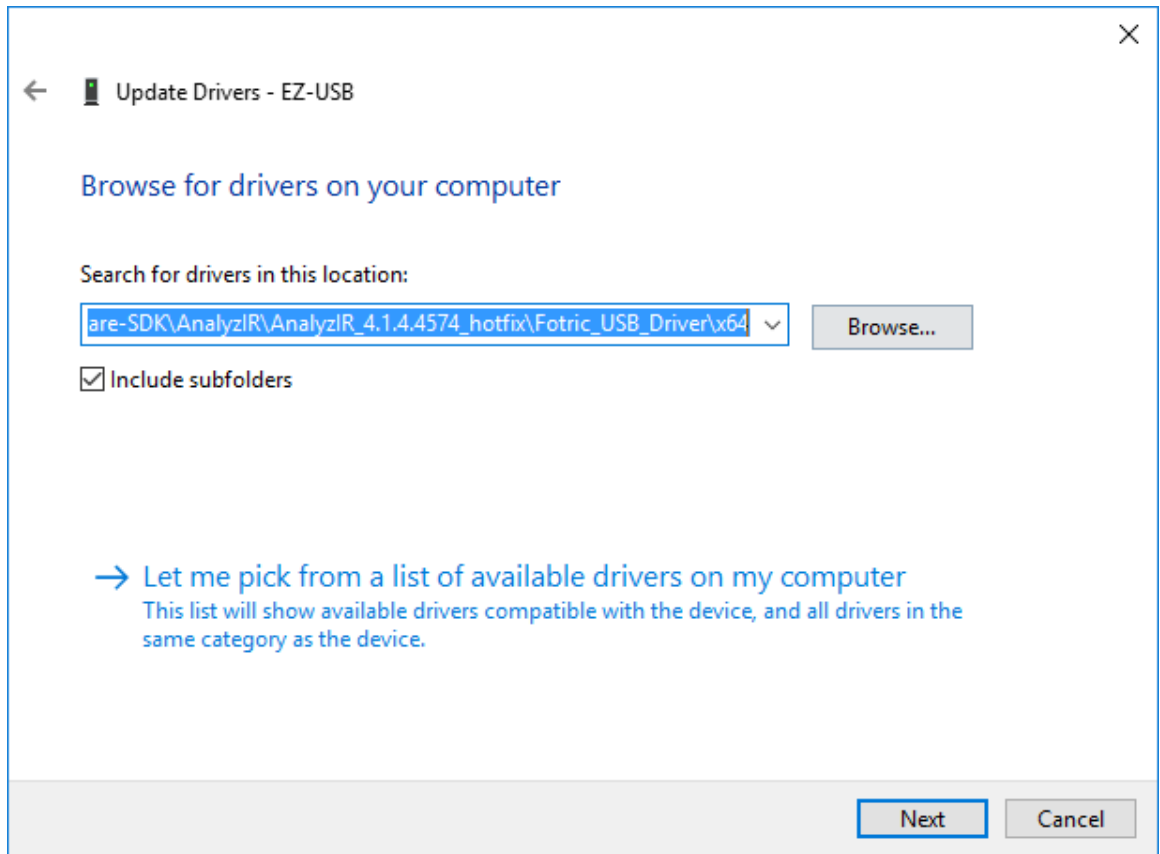
- b) Click  **Device Manager** you will see the screen as below,



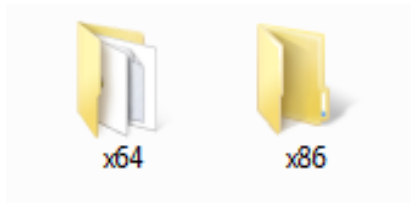
- c) Expand “Other devices”, if you see  **EZ-USB**, then the driver has not been installed yet. Right click and select “Update Driver Software...” to enter the interface below. (Windows 8/10 needs to disable the driver signature enforcement firstly before the installation of driver, refer to section 3.1).



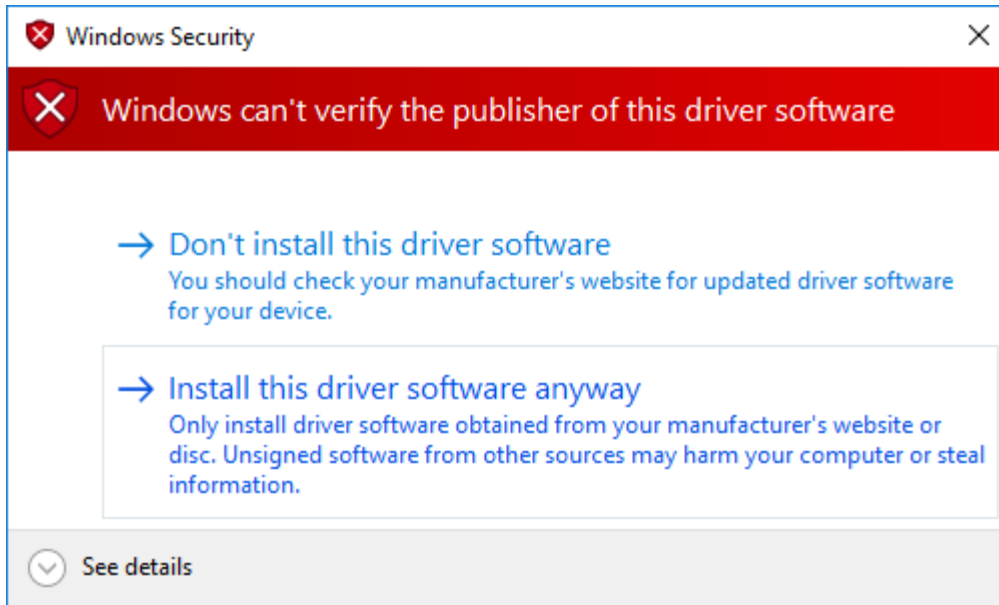
- d) Locate the folder “Fotric device drivers” in the installation folder as below,



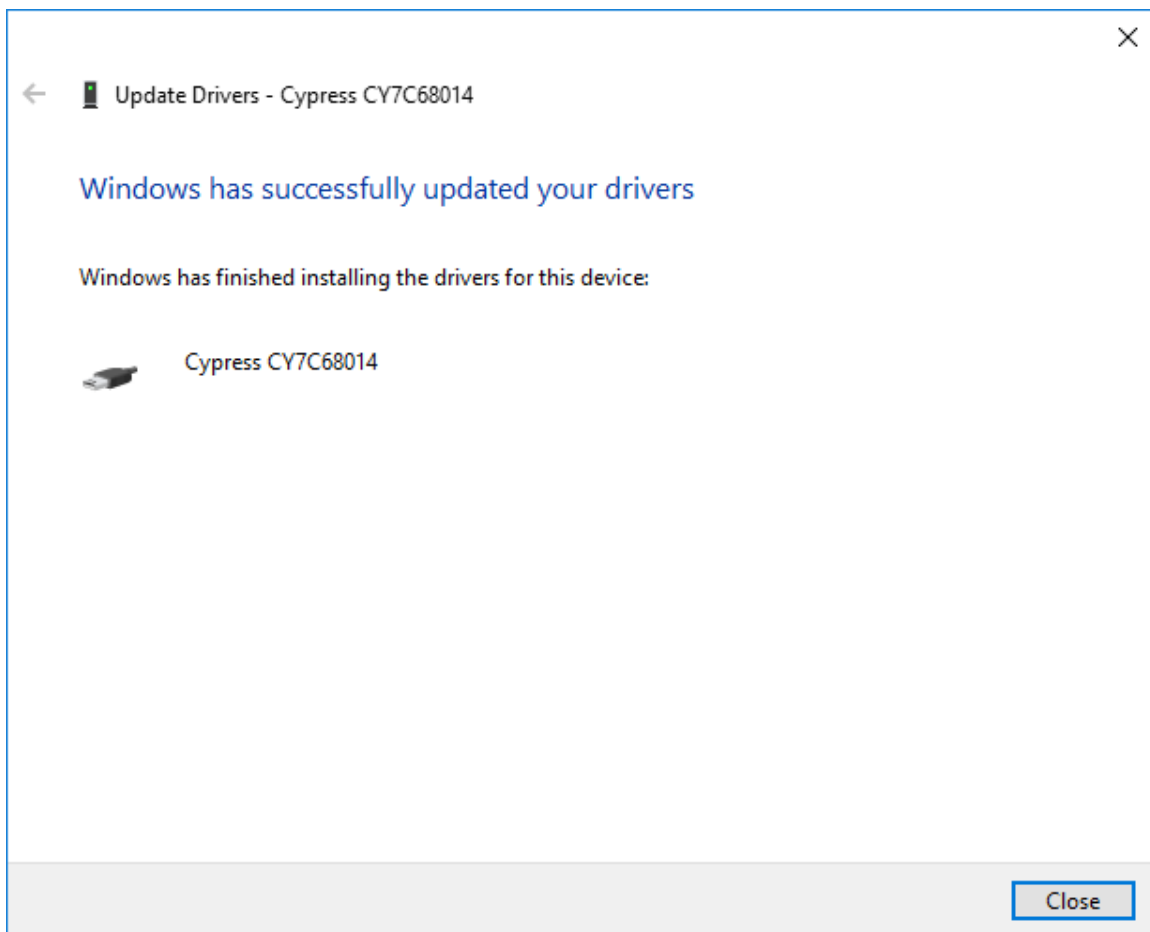
- e) Select the appropriate version for your windows operating system. For 32-Bit OS, select folder “x86” to install the USB driver; For 64-Bit OS, select “x64” to install the USB driver.



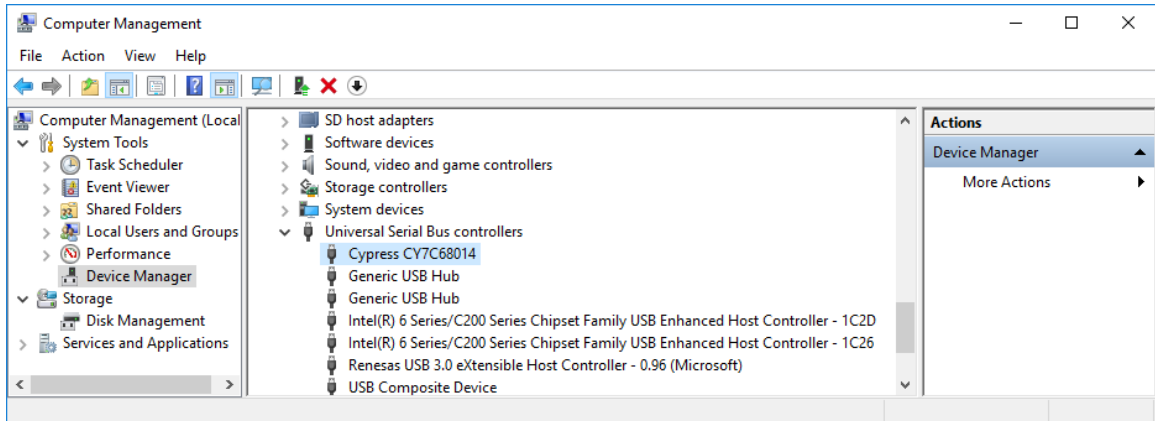
- f) Sometimes the following window may pop out; please select “Install this driver software anyway” to continue the installation.

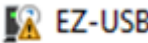


- g) If you see the window below, then the USB driver should be installed successfully. Congratulations!



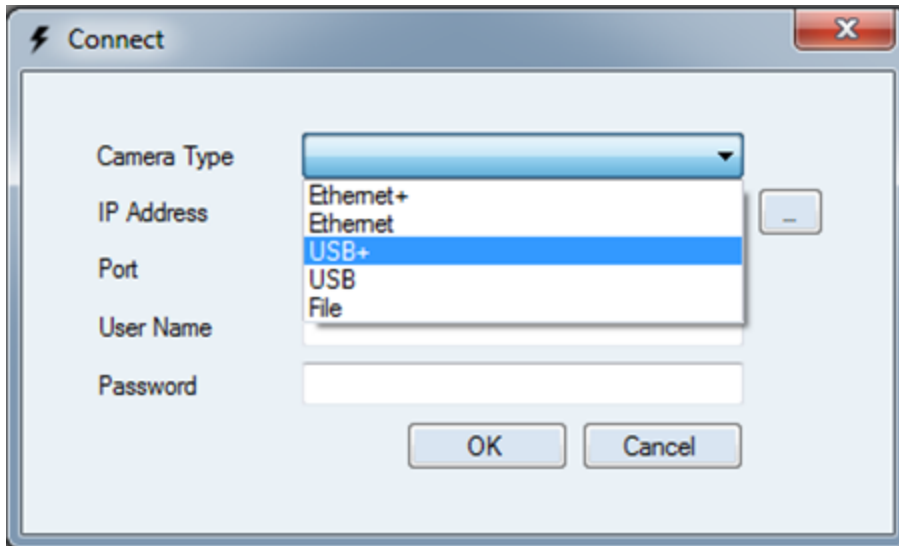
- h) If the installation is failed, you need to follow the steps in section 3.1 and disable driver signature enforcement.
- i) After the USB driver is successfully installed, you can see “Cypress CY7C68014” under “Universal Serial Bus controllers” as below.



- j) If there is an Exclamation mark in front of “Cypress CY7C68014”, it indicates there are issues with the USB driver installation. Generally, a 32-Bit driver (x86) was installed on a 64-Bit OS; or a 64-Bit driver (x64) was installed on a 32-Bit OS. One need to un-install the driver, reconnect the thermal camera and reinstall the appropriate version USB driver.
- k) If you still see  under “Other devices”, it indicates the driver is not successfully installed. Please follow the steps in section 3 and re-install the driver.

Note:

After the installation of the software and USB driver, you can open the software AnalyzIR and connect the FOTRIC thermal camera with the computer/software. Please select USB+ as below for the FOTRIC 220 series cameras.



4. Contact Us

FOTRIC Precision Instruments

Email: support@FOTRIC.com

Website: www.FOTRIC.com

Download AnalyzIR: http://www.FOTRIC.com/software_downloads.html