

GENERAL[®]

Pipe & Duct Video Borescope Inspection System

Complete System (DPS16) Probe & Reel Set only (P16PIP) DCS1600 Console only (H16)

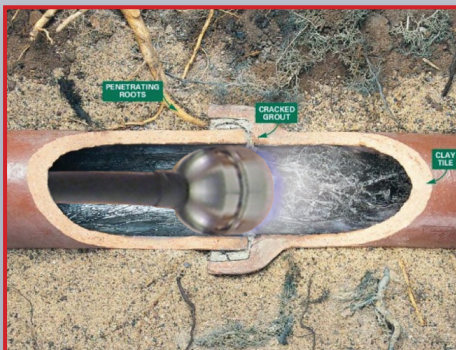
Ideal for examining the interior of water pipes, sewer pipes, and HVAC ducts. Especially tailored for 2, 4 and 6 in. I.D. pipes by the included probe centering accessories.

Features & Benefits:

- 72 ft. (22m) long probe with 1.1 in. (28mm) diameter camera head
- Eight super-bright white LEDs give probe 640 x 480 pixel (VGA) resolution; superior optics yield excellent depth of field of 0.4 in. (10mm) to infinity
- Includes H16 — the DCS1600 Video Borescope Handheld Recording Console
- Probe is water-tight to IP68 standard (depth of 33 ft./10m) and is flexible enough to make two 90° bends
- Stainless steel camera head is immune to bathroom toilet cleaner, unleaded gasoline, brake/transmission fluid and machine oil
- Steel probe reel is sturdy and dust-tight to IP65 standard, works vertically or horizontally, and holds the recording console



A probe's-eye view of a filthy air-conditioning duct



Tree roots cracking and invading a clay sewer pipe



640 x 480 pixel (VGA) resolution camera-tipped probe has eight super-bright white LEDs



Pipe & Duct Video Borescope Inspection System

Specifications:

CAMERA-TIPPED PROBE:

Diameter: 0.23 in. (6mm)
Length: 72 ft. (22m)
Material: Fiberglass
Camera Head Diameter: 1.1 in. (28mm)
Light Source: 8 white LEDs
Depth of Field: 0.4 in. (10mm) to infinity
Field of View: 150.8° (diagonal)
Waterproof Depth (IP68): 50 ft. (10m)
Operating Temperature: 14° to 158°F (-10° to 70°C)
Weight: 6.6 lb. (3kg)

REEL:

Frame Diameter: 11.8 in. (300mm)
Dust and Water Resistance: To IP65 standard
Operating Temperature: 14° to 158°F (-10° to 70°C)
Weight: 6.6 lb. (3kg)

Included Accessories:

Probe Centering Ring:
 Inner Diameter: 1.1 in. (28mm)
 Outer Diameter: 2 in. (50mm)

Small Probe Centering Brush:
 Inner Diameter: 1.1 in. (28mm)
 Outer Diameter: 4 in. (100mm)

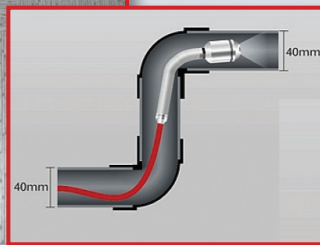
Large Probe Centering Brush:
 Inner Diameter: 1.1 in. (28mm)
 Outer Diameter: 6 in. (150mm)

Includes:

- P16PIP Pipe & Duct Inspection Probe & Reel Set (includes ring and brushes for centering probe in 2 in., 4 in. and 6 in. I.D. pipes)
- DCS1600 Video Borescope Handheld Recording Console (General Part No. H16)
- 2GB SD memory card
- RCA cable for viewing video and images on NTSC monitor
- AC adapter/battery charger and cleaning cloth and liquid for console
- Custom hard carrying case



The probe is flexible enough to make two 90° bends in a 1.6 in. (40mm) diameter pipe



Monitoring the clearing of a clogged sewer drain

The DCS1600 Video Borescope Handheld Recording Console is also available separately as No. H16. It is compatible with all QVGA and VGA resolution probes offered by General, except the P18ART-1SM, -2SM and -3SM articulating probes.



No. H16

CE RoHS



Probe, reel, ring and brushes are available separately as P16PIP. P16PIP is compatible with DCS1600, DCS1600ART and DCS1800 systems.



No. P16PIP



2, 4 and 6 in. probe centering accessories



A packaged DPS16 system



General Tools & Instruments
 80 White Street, New York, NY 10013-3567
 TEL: 212. 431. 6100 TOLL FREE: 800. 697. 8665
 sales@generaltools.com www.generaltools.com
 DPS16SS Printed in USA 03/12