

**GENERAL<sup>®</sup>**

# VGA Resolution Probe

**Ideal for capturing high-quality (640 x 480 pixel) video and images of hard-to-reach or hard-to-see areas and equipment. Light boost, anti-reflection and image rotation functions extract clear images from even the darkest spaces.**

## Features & Specifications:

- Six super-bright white LEDs—four front-facing, two side-facing— support 640 x 480 pixel (VGA) resolution video and still images
- 39 in. (1m) long, 0.22 in. (5.5mm) diameter probe goes deep into tight spaces
- Light boost, anti-reflection and 90° image rotation buttons on handle
- Superior optics tailored for close-focus viewing from 0.4 in. to 12 in. (10 to 300mm) over 60° (diagonal) field of view
- 0.78 in. (20mm) long stainless steel camera head is immune to bathroom toilet cleaner, unleaded gasoline, diesel fuel, brake/transmission fluid and machine oil
- Probe is waterproof to IP67 standard
- 110° mirrored viewing tip
- **Dimensions of Handle:**  
5.47 x 1.38 x 1.26 in. (139 x 35 x 32mm)
- **Weight:** 7.76 oz. (220g)

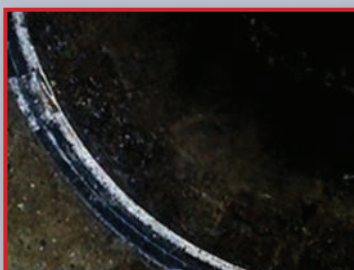
Compatible with General's  
DCS1600, DCS1600ART and DCS1800  
high-performance video borescope  
inspection systems,  
H16 handheld recording console  
and DCS1800-TR wireless  
probe handle/controller



No. P16181HP



The VGA probes' four forward-facing LEDs and two rear-facing LEDs make the darkest crawl space as bright as day



Before Boosting



Brighter Image after Boosting

The light boost function of a VGA resolution probe



# VGA Resolution Articulating Probe

P16HPART

Ideal for capturing high-quality (640 x 480 pixel) video and images of hard-to-reach or hard-to-see areas and equipment. Light boost, anti-reflection and image flip functions extract clear images from even the darkest spaces.

### Features & Specifications:

- Five super-bright white LEDs—three front-facing, two side-facing— support 640 x 480 pixel (VGA) resolution video and still images
- 39 in. (1m) long, 0.23 in. (6mm) diameter probe goes deep into tight spaces
- Probe articulates 155° up and 155° down with radius of 50 ± 5mm
- Light boost, anti-reflection and 90° image rotation buttons on handle
- Superior optics tailored for close-focus viewing from 0.4 in. to 12 in. (10 to 300mm) over 87° (diagonal) field of view
- 0.9 in. (23mm) long stainless steel camera head is immune to bathroom toilet cleaner, unleaded gasoline, diesel fuel, brake/transmission fluid and machine oil
- Probe is waterproof to IP67 standard
- 70° mirrored viewing tip
- **Dimensions of Handle:**  
5.47 x 1.38 x 1.26 in.  
(139 x 35 x 32mm)
- **Weight:** 7.76 oz. (220g)

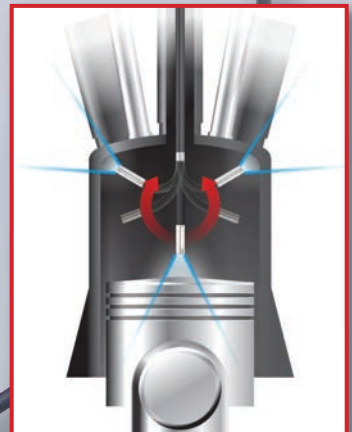


No. P16HPART

Compatible with General's DCS1600, DCS1600ART and DCS1800 high-performance video borescope inspection systems, H16 handheld recording console and DCS1800-TR wireless probe handle/controller



An articulating probe is a must for inspecting densely packed aircraft engines



The 310° sweep of the P16HPART makes it possible to view areas "behind" the probe tip



Before pressing anti-reflection button (with mirror)



After pressing anti-reflection button (with mirror)

The anti-glare function of a VGA resolution probe



General Tools & Instruments

80 White Street, New York, NY 10013-3567

TEL: 212. 431. 6100 TOLL FREE: 800. 697. 8665

sales@generaltools.com www.generaltools.com

P16181HP/P16HPART-SS