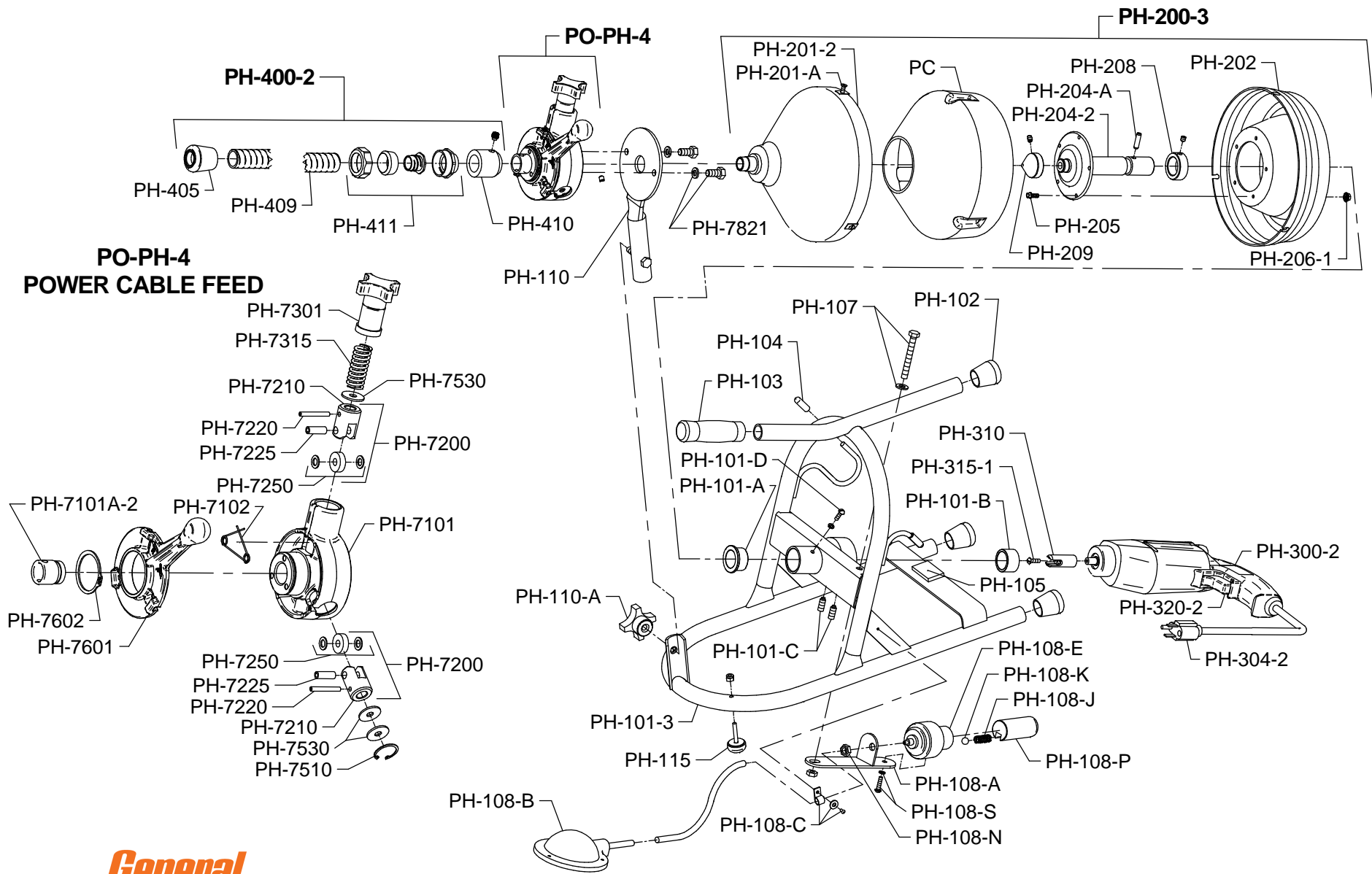


DRAIN-ROOTER PH PARTS LIST

ITEM NO.	CATALOG NO.	DESCRIPTION	ITEM NO.	CATALOG NO.	DESCRIPTION
157020	PH-100-3	Complete Frame Assy. for Skil Motor #6355-GWS & #6320-O	133060	PH-300-2	Skil Motor Assembly - Model 6320-O
157040	PH-101-3	Frame Only for Skil Motor #6355-GWS & #6320-O	135980	PH-304-2	Power Cord for Skil Model #6320-O
157045	PH-101-A	Front Bushing	135990	PH-320-2	Trigger Switch for Skil #6320-O
157050	PH-101-B	Rear Bushing	141175	PH-315-1	Reverse Thread Screw for Motor #6320-O
157055	PH-101-C	Bronze-Tipped Set Screws (2)	158140	PH-400-2	Guide Hose Assembly
157057	PH-101-D	Shaft Retaining Screw w/Lock Washer	157310	PH-405	Rubber Tip
157070	PH-102	Rubber Leg Tips (3)	157317	PH-409	Guide Tube Hose Only
157075	PH-103	Grip Handle	157320	PH-410	Guide Tube Adapter w/Set Screw
157080	PH-104	Rubber Cord Wrap Tips (2)	157323	PH-411	Guide Tube Connector
157085	PH-105	Foam Pad	158150	PO-PH-4	Variable Speed Cable Feed
157090	PH-107	Nut, Bolt, & Washer for Actuator Bracket	157410	PH-7101	Feed Body
157095	PH-108	Switch Actuator Assembly	157417	PH-7101-A-2	Spout (Threaded)
157100	PH-108-A	Switch Actuator Bracket	157420	PH-7102	Lifting Spring
157110	PH-108-B	Foot Pedal and Hose	157425	PH-7200	Feed Roller Assembly
157115	PH-108-C	Hose Clip w/Screw	157430	PH-7210	Carrier Only
157120	PH-108-E	Switch Actuator and Cylinder	157435	PH-7220	Swing Pin
157125	PH-108-J	Spring	157440	PH-7225	Roller Shaft
157130	PH-108-K	Ball	157445	PH-7250	Feed Roller
157135	PH-108-N	Nut	157450	PH-7301	Feed Pressure Knob Assembly
157140	PH-108-P	Piston	157455	PH-7315	Pressure Spring
157145	PH-108-S	Screw and Washer	157465	PH-7510	Bottom Assembly Snap Ring
157150	PH-110	Front Post	157470	PH-7530	Bottom Assembly Thrust Washers (2)
157155	PH-110-A	Front Post Knob	157475	PH-7601	Feed Control Disc with Lever & Knob
157160	PH-115	Rubber Feet, Bolts, & Locknuts (2)	157480	PH-7601-A	Lever and Knob
157180	PH-200-3	Container Complete	157481	PH-7601-B	Spring
157195	PH-201-2	Container Front w/Spout	157482	PH-7601-C	Ball Bearing
157200	PH-201-A	Screws and Clips (3)	157485	PH-7602	Control Disc Retaining Snap Ring
157205	PH-202	Container Back	157520	PH-7821	Bolts & Washers (2)
157215	PH-204-2	Hub w/Shaft for Skil #6355-GWS & #6320-O	136150	PO-PH-703	Set of Feed Rollers Assemblies (3)
157200	PH-204-A	Roll Pin	157530	PO-PH-704	Feed Body, Feed Control Disk, Snap Ring, & Spout Kit
157225	PH-205	Screws for Hub (5)	120500	PC	Plastic Cartridge
157233	PH-206-1	Flange Lock Nuts for Hub (5)	130010	HECS	Handylectric Cutter Set
157235	PH-208	Collar	120020	50HE1	Flexicore Cable, 1/4" x 50 ft. with EL Basin Head
157237	PH-209	Bevelled Collar w/Set Screw	120100	50HE1-A-DH	Flexicore Cable, 5/16" x 50 ft. with Down Head
157240	PH-208-A	Set Screw	120130	50HE1-AC	Flexicore Cable, 5/16" x 50 ft. with Female Connector
157275	PH-310	Drive Yoke	120170	35HE2	Flexicore Cable, 3/8" x 35 ft. with Female Connector
157250	PH-300-1	Skil Motor Assembly - Model 6355-GWS	140840	BNDT	Band-It Splashguard
136030	PH-304-1	Power Cord for Skil Model #6355-GWS			
136090	PH-320-1	Trigger Switch for Skil #6355-GWS			
157280	PH-315	Reverse Thread Screw			

DRAIN-ROOTER PH SCHEMATIC DIAGRAM



PO-PH-4 POWER CABLE FEED

IMPORTANT: When ordering, give Serial Number of Machine.