



Long Stem Analog Thermometers

PT2008G-160
PT2008G220
PT2008G-550
PT2020G-220

Ideal for measuring soil temperature

Features:

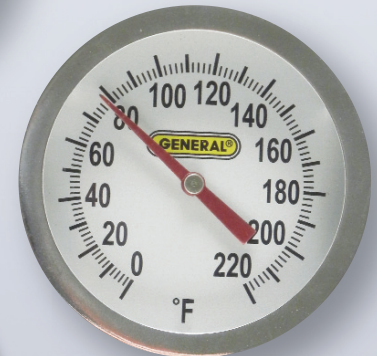
- Four combinations of measurement range and probe length
- 2 in. (51mm) diameter dial with glass lens
- Durable stainless steel probe
- Rugged construction

Specifications:

	Measurement Range	Probe Length
PT2008G-160	-40° to 160°F (-40° to 71°C)	8 in. (203mm)
PT2008G220	0° to 220°F (-18° to 104°C)	8 in. (203mm)
PT2008G-550	50° to 550°F (10° to 285°C)	8 in. (203mm)
PT2020G-220	0° to 220°F (-18° to 104°C)	20 in. (508mm)



No. PT2008G-160



No. PT2008G220



No. PT2008G-550



No. PT2020G-220



General Tools & Instruments
 80 White Street, New York, NY 10013-3567
 TEL: 212. 431. 6100 TOLL FREE: 800. 697. 8665
 sales@generaltools.com www.generaltools.com
 PT2008G/PT2020GSS Printed in USA 03/14