



# Athletic Training and Sports Medicine Instruments

The image displays a grid of 12 panels, each featuring a different piece of athletic equipment or a sports-related scene. The equipment includes:

- Top Row:** A digital speedometer (DAF3018M) with a fan, a digital altimeter (DAF3018B) with a fan, and a digital speedometer (DAF3018C) with a fan.
- Second Row:** A digital speedometer (DAF3018D) with a fan, a digital speedometer (DAF3018E) with a fan, and a digital speedometer (DAF3018F) with a fan.
- Third Row:** A digital speedometer (DAF3018G) with a fan, a digital speedometer (DAF3018H) with a fan, and a digital speedometer (DAF3018I) with a fan.
- Bottom Row:** A digital speedometer (DAF3018J) with a fan, a digital speedometer (DAF3018K) with a fan, and a digital speedometer (DAF3018L) with a fan.

Precision, Specialty and Innovation . . . Since 1922



# Heat Index / Temperature / Humidity

CE



WBGT8758  
N

## HEAT INDEX MONITOR WITH WET BULB GLOBE TEMPERATURE – WBGT8758

Ideal for industrial uses including HVAC/R, and outdoor sports medicine applications.

**FEATURES:**

- Measures and displays four parameters:
  - Air temperature
  - Relative humidity
  - Dew point
  - Wet bulb temperature
- CE approved

**SPECIFICATIONS:**

- ◆ Air & WBGT Temperature Range: 32° to 122°F (0° to 50°C)
- ◆ Temperature Measurement Accuracy: ±0.8°F (±0.6°C)
- ◆ Globe Temperature Accuracy: 59° to 104°F (15° to 40°C)  
Indoor: ±2° F/C Outdoor: ±3° F/C
- ◆ Relative Humidity Measurement Range: 5 to 95%
- ◆ RH Measurement Accuracy: ±3% of reading
- ◆ Wet Bulb Temperature Measurement Range: 70° to 115°F (21° to 45°C)

- ◆ Wet Bulb Temp. Measurement Accuracy: ±2°F
- ◆ Dew Point Measurement Accuracy: ±3% of reading
- ◆ Black Ball Dimensions: 1.38 (H) x 1.57 (Diam) in. (35 x 40 mm)
- ◆ Dimensions of Instrument: 10 x 1.6 x 1.9 in. (254 x 40 x 49mm)
- ◆ Weight: 5.0 oz. (142g)
- ◆ Power Source: 2 “AAA” batteries (included)

**INCLUDES:**

- Battery
- User’s Manual
- 1-Year Limited Warranty

UPC	NO.
08758 9	WBGT8758
16120 3	HR33LJ 33% Calibration Salt (optional)
16130 2	HR75LJ 75% Calibration Salt (optional)

CE



WBGT8778  
N

## DELUXE WBGT HEAT INDEX MONITOR WITH 75MM BLACK BALL – WBGT8778

Ideal for industrial uses including HVAC/R, and outdoor sports medicine applications.

**FEATURES:**

- Greater black ball surface area for higher globe temperature and heat index accuracy
- Measures four parameters: Air temperature, relative humidity, dew point, wet bulb temperature
- CE approved

**SPECIFICATIONS:**

- ◆ Air & WBGT Temperature Range: 32° to 122°F (0° to 50°C)
- ◆ Temperature Measurement Accuracy: ±0.8°F (±0.6°C)
- ◆ Globe Temperature Accuracy: 59° to 104°F (15° to 40°C)  
Indoor: ±1° F/C Outdoor: ±1.5° F/C
- ◆ Relative Humidity Measurement Range: 5 to 95%
- ◆ RH Measurement Accuracy: ±3% of reading
- ◆ Wet Bulb Temperature Measurement Range: 70° to 115°F (21° to 45°C)

- ◆ Wet Bulb Temperature Measurement Accuracy: ±2°F
- ◆ Dew Point Measurement Accuracy: ±3% of reading
- ◆ Black Ball Dimensions: 2.95 (H) x 2.95 (Diam) in. (75 x 75mm)
- ◆ Dimensions of Instrument: 11 x 3 x 3 in. (278 x 75 x 75mm)
- ◆ Weight: 5.3 oz. (150g)
- ◆ Power Source: 2 “AAA” batteries (included)

**INCLUDES:**

- Battery
- User’s Manual
- 1-Year Limited Warranty

UPC	NO.
01308 3	WBGT8778
16120 3	HR33LJ 33% Calibration Salt (optional)
16130 2	HR75LJ 75% Calibration Salt (optional)

CE



SAM800HI  
N

## POCKET SIZED HEAT INDEX MONITOR - SPORTS MODEL – SAM800HI

Ideal for sports medicine professionals, coaches and athletes to monitor outdoor conditions to ensure safety.

**FEATURES:**

- Measures and displays heat index, temperature, humidity and dew point
- Danger icon with audible beep
- Min/Max memory + data hold
- °F/°C switch
- 2-line x 4-digit LCD
- Auto power off with low battery indicator
- CE approved

**SPECIFICATIONS:**

- ◆ Temperature Measurement Range: 32° to 122°F (0° to 50°C)
- ◆ Temperature Measurement Accuracy: ±1.8°F (±1°C)
- ◆ Relative Humidity Measurement Range: 0 to 100%

- ◆ RH Measurement Accuracy: ±3% of reading
- ◆ Dew Point Measurement Range/Accuracy: 32° to 140°F (0° to 60°C)/±3%
- ◆ Heat Index Range/Accuracy: 70° to 115°F (21° to 45°C)/±3%
- ◆ Display Resolutions: 0.1° (temperature), 0.1% (RH)
- ◆ Dimensions: 6.7 x 1.85 x 0.5 in. (168 x 47 x 15mm)
- ◆ Weight: 2.3 oz. (65g)
- ◆ Power Source: 1 “CR2032” battery (included)

**INCLUDES:**

- Battery
- Pocket Clip
- User’s Manual
- 1-Year Limited Warranty

UPC	NO.
10100 1	SAM800HI

### CALIBRATABLE DIGITAL PSYCHROMETER – EP8706

Ideal for accurate handheld measurements of temperature and humidity.

**FEATURES:**

- ◆ Measures and displays relative humidity (RH) and ambient temperature, wet bulb and dew point temperatures
- ◆ Jumbo display, triple read-out
- ◆ Rotating head to protect sensor
- ◆ Field calibratable humidity measurements
- ◆ Auto power off
- ◆ Min/Max memory + data hold
- ◆ CE approved

- ◆ Response Time: 60 seconds (approx.)
- ◆ Wet Bulb Range: -6.88° to 122°F (-21.6° to 49.9°C)
- ◆ Dew Point Range: -90.4° to 122°F (-68° to 49.9°C)
- ◆ Dimensions: 6.5 x 1.8 x 0.5 in. (165 x 46 x 13mm)
- ◆ Weight: 4 oz. (113g)
- ◆ Power Source: 2 “AAA” batteries (included)

**SPECIFICATIONS:**

- ◆ Temperature Measurement Range: -4° to 122°F (-20° to 50°C)
- ◆ Temperature Measurement Accuracy: ±1.2°F (±0.6°C)
- ◆ RH Measurement Range: 10 to 90%
- ◆ RH Measurement Accuracy: ±3% of reading

**INCLUDES:**

- Batteries
- User’s Manual
- 1-Year Limited Warranty

UPC	NO.
10041 7	<b>EP8706</b>
10043 1	<b>P8706</b> External Temperature Probe (optional)
15060 3	<b>HR33</b> 33% Calibration Salt (optional)
15070 2	<b>HR75</b> 75% Calibration Salt (optional)



**EP8706**  
N

### THERMO-HYGROMETER/PSYCHROMETER WITH DEW POINT AND WET BULB – SAM990DW

Ideal for monitoring environmental conditions.

**FEATURES:**

- ◆ Measures and displays relative humidity (RH) and ambient, wet bulb and dew point temperatures on a dual-readout LCD
- ◆ No twirling or charts necessary
- ◆ Min/Max memory + data hold
- ◆ °C/°F switch
- ◆ 20-minute auto power off
- ◆ Low battery indication

- ◆ Dew Point Range: -22° to 122°F (0° to 49.9°C)
- ◆ Dew Point Measurement Accuracy: ±1.2°F (±0.6°C)
- ◆ Response Time: 60 seconds (approx.)
- ◆ Dimensions: 6.7 x 1.85 x 0.5 in. (170 x 22 x 13mm)
- ◆ Weight: 3.1 oz. (88g)
- ◆ Power Source: 2 “AAA” batteries (included)

**SPECIFICATIONS:**

- ◆ Temperature Measurement Range: -4° to 122°F (-20° to 50°C)
- ◆ Temperature Measurement Accuracy: ±1.8°F (±1°C)
- ◆ Relative Humidity Measurement Range: 10 to 90%
- ◆ RH Measurement Accuracy: ±3% of reading

**INCLUDES:**

- Protective Cap With Pocket Clip
- Batteries
- User’s Manual
- 1-Year Limited Warranty

UPC	NO.
10025 7	<b>SAM990DW</b>



**SAM990DW**  
N

### °C AND °F SLING PSYCHROMETERS – SP100CR & SP100FR

Calculate relative humidity by measuring evaporation.

**FEATURES:**

- ◆ High impact plastic construction
- ◆ Fast, accurate and easy to use
- ◆ No assembly required
- ◆ Classic twirling design
- ◆ Separate models for °F or °C

**INCLUDES:**

- Two Thermometers
- One Wick

Model	Range	Type
<b>SP100CR</b>	-5° to 50°C	Red Spirit
<b>SP100FR</b>	20° to 120°F	Red Spirit

UPC	NO.	REPLACEMENT PARTS
10215 2	<b>SP100CR</b>	
10205 3	<b>SP100FR</b>	
10260 2	<b>SPR108</b>	Two °F Replacement Thermometers for SP100FR
10265 7	<b>SPR109</b>	Two °C Replacement Thermometers for SP100CR
10270 1	<b>SPR120</b>	Six Replacement Wicks for Either Unit

**SPECIFICATIONS:**

- ◆ Dimensions: 8.25 x 1.25 x 0.625 in. (210 x 32 x 16mm)



**SP100CR**  
**SP100FR**



# Temperature / Humidity



EP8703  
N

EP8710  
N

## CALIBRATABLE MULTI-FUNCTION THERMO-HYGROMETER (EP8703) AND THERMO-HYGROMETER/PSYCHROMETER (EP8710)

Ideal for accurately measuring any environment's temperature, relative humidity (RH), dew point and other condensation parameters.

### FEATURES (EP8703 & EP8710):

- Jumbo backlit display with double (EP8703) or triple (EP8710) readout
- Field calibratable using optional 33% and 75% salts
- °F/°C switch
- 20-minute Auto Power Off (can be disabled for calibration)
- Low battery indicator

### ADDITIONAL FEATURES (EP8710):

- Data hold and Max/Min buttons
- Also calculates and displays wet bulb & dew point temperatures.  
Dew Point range: -67° to 122°F (-55° to 50°C).  
Wet bulb range: -31° to 122°F (-35° to 50°C)
- Using included external probe, can also measure: 1) the difference between an object's internal and surface temperatures or 2) an object's condensation temperature—the difference between its surface temperature and the dew point temperature

### SPECIFICATIONS:

- ◆ Ambient Temperature Measurement Range: 14° to 122°F (-10° to 50°C)
- ◆ Ambient Temperature Measurement Accuracy/Resolution: ±1.8°F (±1.0°C)
- ◆ RH Measurement Range: 0 to 99.9%
- ◆ RH Measurement Accuracy: ±3% from 5% to 95% RH
- ◆ External Temperature Probe Measurement Accuracy (EP8710 only): ±1.8°F (±1°C)
- ◆ External Probe Cord Length: 48 in. (1.22m)
- ◆ Dimensions: 7.56 x 2.40 x 1.57 in. (192 x 61 x 40mm)
- ◆ Weight (without battery): 3.77 oz. (107g)
- ◆ Power Source: (1) "9V" battery (included)

### INCLUDES:

- Sensor Protection Cap
- "9V" Battery • User's Manual
- External Temperature Probe (EP8710 only)
- 1-Year Limited Warranty

UPC	NO.
01632 9	EP8703
01631 2	EP8710
15060 3	HR33 Calibration Salt MgCl 33% (optional)
15070 2	HR75 Calibration Salt NaCl 75% (optional)



PTH8708



## PEN TYPE AND POCKET SIZED THERMO-HYGROMETER – PTH8708

Ideal for Sports Medicine and industrial applications.

### FEATURES:

- Fits in your shirt pocket
- Simultaneously displays temperature and humidity
- Field calibratable humidity measurement
- °F/°C switch
- Auto power off after 20 minutes
- Min/Max memory + data hold
- CE approved

- ◆ Relative Humidity Measurement Range: 5 to 95%
- ◆ RH Measurement Accuracy: ±5% of reading
- ◆ Temperature, RH Resolutions: 0.1° (F or C), 1% RH
- ◆ Dimensions: 6.9 x 1.7 x 0.6 in. (175 x 42 x 16mm)
- ◆ Power Source: 1 "CR2032" battery (included)

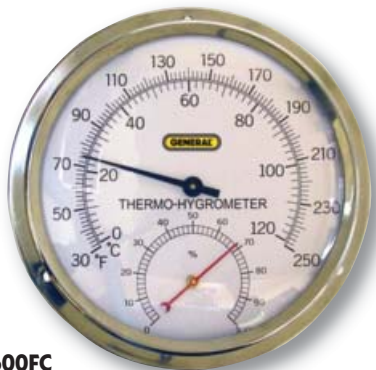
### SPECIFICATIONS:

- ◆ Temperature Measurement Range: 14° to 122°F (-10° to 50°C)
- ◆ Temperature Measurement Accuracy: ±1.8°F (±1°C)

### INCLUDES:

- Battery • Pocket Clip • User's Manual

UPC	NO.
10005 9	PTH8708
15060 3	HR33 33% Calibration Salt (optional)
15070 2	HR75 75% Calibration Salt (optional)



B600FC  
N

## HIGH TEMPERATURE, WALL MOUNTABLE ANALOG THERMO-HYGROMETER – B600FC

Ideal for measuring and monitoring temperature and humidity.

### FEATURES:

- Brass case
- Flange mounting
- Attractive design

- ◆ RH Measurement Accuracy: ±6% of reading
- ◆ Temperature, RH Resolutions: 2°, 2%
- ◆ Dimensions: 5.125 in. dial diameter, 6 in. overall
- ◆ Weight: 11 oz. (312g)

### SPECIFICATIONS:

- ◆ Temperature Measurement Range: 30° to 250°F (-1° to 121°C)
- ◆ Temperature Measurement Accuracy: ±1.8°F (±1°C)
- ◆ Relative Humidity Measurement Range: 0 to 100%

UPC	NO.
01636 7	B600FC (Brass case)

### 3-PARAMETER MINI ANEMOMETER – DAF3008

Calculates Wind Chill Index from measurements of temperature and wind speed. A potential life-saver for cold-weather sportsmen such as winter campers, mountaineers and skiers.

#### FEATURES:

- Measures or calculates
  1. ambient temperature
  2. wind speed
  3. wind chill
- Small and light enough for one-handed operation
- Calculates and displays Min, Max and Avg wind speed values over periods of up to 5 minutes
- Large backlit LCD
- Data hold button
- 5-minute Auto Power Off
- Includes battery and wrist strap
- CE and RoHS approved

#### SPECIFICATIONS:

- ♦ Wind Speed Measurement Range: 80 to 5910 fpm (0.9 to 67 mph, 0.4 to 30 m/s, 24 to 1801 m/m, 1.4 to 108 km/hr, 0.8 to 58.3 knots)

- ♦ Wind Speed Measurement Basic Accuracy:  $\pm 3\%$  of full-scale value
- ♦ Temperature Measurement Range 32° to 122°F (0° to 50°C)
- ♦ Temperature Measurement Accuracy:  $\pm 2^\circ\text{F}$  ( $\pm 1.2^\circ\text{C}$ )
- ♦ Operating Temperature: 32° to 104°F (0° to 40°C) @ <95%RH
- ♦ Dimensions: 5.83 x 2.08 x 0.87 in. (148 x 53 x 22mm)
- ♦ Weight: 2.9 oz. (82.2g)
- ♦ Power Source: (1) "CR2032" battery (included)

#### INCLUDES:

- Wrist Strap • Battery • User's Manual
- 1-Year Limited Warranty

UPC	NO.
01667 1	DAF3008



DAF3008



### 9-PARAMETER MINI ANEMOMETER/PSYCHROMETER WITH COMPASS AND MEMORY – DAF3012M

Ideal for tracking multiple outdoor environmental parameters, including Wind Chill Index. A potential life-saver for outdoorsmen and sports coaches.

#### FEATURES:

- Measures or calculates:
  1. Ambient temperature
  2. Wind speed
  3. Wind direction
  4. Relative humidity (RH)
  5. Dew point temperature
  6. Wet bulb temperature
  7. Wind Chill Index
  8. Barometric pressure
  9. Compass
- Stores/recalls 20 readings
- Dual LCD readouts
- Calculates and displays Min, Max and Avg wind speed values over periods of up to 5 minutes
- °C/°F readout for all temperatures
- Five Imperial/metric unit options for wind speed
- Data hold
- Battery charge indicator
- Protective cap for vane and sensor
- Tripod mount

#### SPECIFICATIONS:

- ♦ Temperature Measurement Range: -4° to 158°F (-20° to 70°C)
- ♦ Temperature Measurement Accuracy:  $\pm 1.8^\circ\text{F}$  (1°C) from 14° to 104°F (-10° to 40°C);  $\pm 3.6^\circ\text{F}$  (2°C) elsewhere in range
- ♦ Wind Speed Measurement Ranges: 80 to 5910 fpm (0.9 to 67 mph, 0.4 to 30 m/s, 24 to 1801 m/min, 1.4 to 108 km/hr, 0.8 to 58.3 knots)
- ♦ Wind Speed Measurement Basic Accuracy:  $\pm 3\%$  of full-scale value
- ♦ RH Measurement Range: 0 to 100%
- ♦ RH Measurement Accuracy:  $\pm 3\%$  from 20 to 80%RH;  $\pm 5\%$  elsewhere
- ♦ Dew Point Range: -67° to 122°F (-55° to 50°C)
- ♦ Wet Bulb Range: -31° to 122°F (-35° to 50°C)
- ♦ Barometric Pressure Range/Accuracy: 30 to 120kPa/ $\pm 0.2\text{kPa}$  (typical)
- Power Source: (1) "CR2032" battery (included)

#### INCLUDES:

- Wrist Strap • Battery • User's Manual
- 1-Year Limited Warranty

UPC	NO.
01697 8	DAF3012M



DAF3012M

# Airflow Meters

CE  
RoHS



DLAF8000  
DLAF8000C



## 4-IN-1 ENVIRONMENTAL AIRFLOW METER WITH "K" PORT – DLAF8000

Measures airflow, humidity, temperature and light.

**FEATURES:**

- Displays FPM, MPH, KPH, MPS, knots + temperature
- One-handed airflow measurement
- Single and multi-point averages
- Low-friction ball vane wheels improve accuracy at high and low velocities
- "K" type thermocouple port for measuring surface temperatures
- Min/Max memory + data hold
- °F/°C switch
- CE and RoHS approved

**SPECIFICATIONS:**

- ◆ Airflow Velocity Measurement Range: 80 to 5910 ft./min (0.4 to 30 m/sec)
- ◆ Airflow Measurement Accuracy: ±5% max
- ◆ Ambient Temperature Measurement Range: 32° to 122°F (0° to 50°C)
- ◆ Ambient Temperature Measurement Accuracy: ±2.5°F (±1.5°C)
- ◆ Relative Humidity Measurement Range: 10 to 90%

- ◆ RH Measurement Accuracy: ±4% of reading
- ◆ Surface Temperature Measurement Range (with optional "K" type thermocouple): -148° to 2372°F (-100° to 1300°C)
- ◆ Surface Temperature Measurement Accuracy: ±1%
- ◆ Dimensions: 6.14 x 2.36 x 1.29 in. (156 x 60 x 33mm)
- ◆ Weight: 4 oz. (113.4g) (including battery)
- ◆ Power Source: 1 "9V" battery (not included)

**INCLUDES:**

- Wrist Strap
- C4 Case (DLAF8000C only)
- User's Manual
- 1-Year Limited Warranty

UPC	NO.
40110 1	<b>DLAF8000</b>
40111 8	<b>DLAF8000C</b> with "C4" case
01264 2	<b>C16</b> "C4" case for DLAF8000/ replacement case for DLAF8000C



DAF3010B



## THE SEEKER™ AIRFLOW METER – DAF3010B

Ideal for contractors, auto technicians and homeowners to measure and monitor the efficiency of AC and ventilation systems. Also suitable for outdoor use.

**FEATURES:**

- Displays current, average, or maximum wind speed
- Wind chill indication
- LCD display with backlight for easy reading
- Selectable air speed units of ft./min, m/s, km/hr, mph and knots
- °F/°C switch
- Battery status indication

**SPECIFICATIONS:**

- ◆ Airflow Velocity Measurement Range: 0 to 8160 ft./min (0 to 42 m/sec)
- ◆ Airflow Measurement Accuracy: ±3%

- ◆ Temperature Measurement Range: -58° to 212°F (-50° to 100°C)
- ◆ Temperature Measurement Accuracy: ±0.5°F (±0.3°C)
- ◆ Dimensions: 5 x 3 x 1 in. (120 x 70 x 26.5mm)
- ◆ Weight: 2.5 oz. (70g) (including battery)
- ◆ Power Source: 1 "CR2032" battery (included)

**INCLUDES:**

- Battery
- User's Manual
- 1-Year Limited Warranty

UPC	NO.
40105 7	<b>DAF3010B</b>

CE  
RoHS



DAF800

## MINI AIRFLOW METER – DAF800

Measures airflow in ducts and at grille returns. Helps balance systems.

**FEATURES:**

- Five available air velocity units: ft./min (fpm), m/sec, kmph, mph, knots
- Small and light enough for one-handed operation
- Low-friction ball vane wheels provide high accuracy at all air speeds
- Min/max memory + data hold
- 10-minute Auto Power Off (disabled during Min/Max recording)
- CE and RoHS approved

**SPECIFICATIONS:**

- ◆ Measurement Ranges: 1.4 to 108 kmph, 0.4 to 30m/sec, 80 to 5810 fpm, 0.9 to 67 mph, 0.8 to 58.3 knots
- ◆ Measurement Accuracy: ±3% of full-scale value below 20 m/s; ±4% of full-scale value above 20m/sec

- ◆ Measurement Resolutions: 0.1 km/hr, 0.1 m/sec, 1 fpm, 0.1 mph, 0.1 knots
- ◆ Dimensions: 6.15 x 2.36 x 1.29 in. (156 x 60 x 33mm)
- ◆ Weight: 4 oz. (113.4g)
- ◆ Power Source: 1 "9V" battery (not included)

**INCLUDES:**

- Wrist Strap
- User's Manual
- 1-Year Limited Warranty

UPC	NO.
40105 7	<b>DAF800</b>

### JUMBO DISPLAY WALL OR DESK CLOCK WITH TEMPERATURE – DJC381

**FEATURES:**

- Displays time, temperature, day and date
- Calendar to December 31, 2030
- 12 or 24 hour switch
- Clear convex lens for easy viewing at any angle
- °F/°C switch
- Extra large display



**SPECIFICATIONS:**

- ◆ Temperature Measurement Range: -58° to 158°F (-50° to 70°C)
- ◆ Color: metallic black
- ◆ Digit Height: 2.15 in. (55mm)
- ◆ Display Size: 6 x 3.65 in. (152 x 93mm)
- ◆ Dimensions: 9 x 8.25 x 0.75 in. (229 x 210 x 93mm)
- ◆ Weight: 1.5 lbs. (680g)
- ◆ Power Source: 4 “AAA” batteries (included)

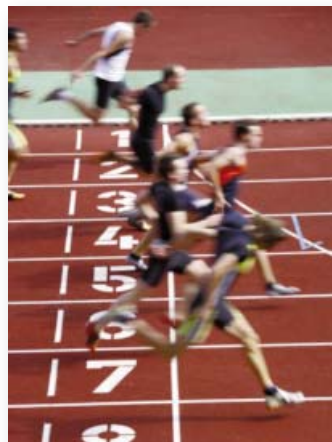
**INCLUDES:**

- Batteries
- User’s Manual
- 1-Year Limited Warranty

UPC	NO.
32010 5	DJC381



DJC381



### MULTI-FUNCTION BLACK STOPWATCH – SW100A

**FEATURES:**

- Count-up to 23:59:59
- Displays lap time, minutes, seconds, month, day and date
- Daily alarm and hourly chime
- 1/100 second precision (for first 30 minutes)
- 12 or 24 hour selectable clock with snooze feature
- Water resistant
- Easy to hold design

**SPECIFICATIONS:**

- ◆ Color: black
- ◆ Digit Height: 0.28 in. (7mm)
- ◆ Display Size: 0.82 x 0.43 in. (21 x 11mm)
- ◆ Dimensions: 2.4 x 2 x 0.5 in. (61 x 51 x 13mm)
- ◆ Weight: 2.4 oz. (68g)
- ◆ Power Source: 1 “CR2016” battery (included)

**INCLUDES:**

- Lanyard
- Battery
- User’s Manual
- 1-Year Limited Warranty

UPC	NO.
30999 5	SW100A



SW100A  
N

### MULTI-FUNCTION YELLOW STOPWATCH – SW100AY

**FEATURES:**

- Count-up to 23:59:59
- Displays lap time, minutes, seconds, month, day and date
- Daily alarm and hourly chime
- 1/100 second precision (for first 30 minutes)
- 12 or 24 hour selectable clock with snooze feature
- Water resistant
- Easy to hold design

**SPECIFICATIONS:**

- ◆ Color: yellow
- ◆ Digit Height: 0.28 in. (7mm)
- ◆ Display Size: 0.82 x 0.43 in. (21 x 11mm)
- ◆ Dimensions: 2.4 x 2 x 0.5 in. (61 x 51 x 13mm)
- ◆ Weight: 2.4 oz. (68g)
- ◆ Power Source: 1 “CR2016” battery (included)

**INCLUDES:**

- Lanyard
- Battery
- User’s Manual
- 1-Year Limited Warranty

UPC	NO.
31002 1	SW100AY



SW100AY  
N



# Stopwatches



SW888M  
N

## STOPWATCH WITH CALENDAR, CLOCK AND BACKLIGHT – SW888M

**FEATURES:**

- 1/100 second precision with lap counter
- Displays lap time, date, month, day, hour, minute, second
- Calendar and time (12/24 hour format)
- Daily alarm, snooze and hourly chime
- Jumbo display
- Water resistant
- Shock resistant

**SPECIFICATIONS:**

- ◆ Color: gray
- ◆ Digit Height: 0.59 in. (15mm)
- ◆ Display Size: 1.3 x 0.63 in. (33 x 16mm)
- ◆ Dimensions: 3 x 2.35 x 0.78 in. (76 x 60 x 20mm)
- ◆ Weight: 2.4 oz. (68g)
- ◆ Power Source: 1 “CR2016” battery (included)

**INCLUDES:**

- Lanyard • Battery • User’s Manual
- 1-Year Limited Warranty

UPC	NO.
31035 9	SW888M



SW888L  
N

## THREE LINE STOPWATCH WITH PROGRAMABLE MEMORY– SW888L

**FEATURES:**

- Three-line display
- 16 lap and split memory with 1/100 second precision
- Fastest and slowest lap calculation
- Countdown timer
- Pacer with programmable memory
- Calendar and time (12/24 hour format)
- Daily alarm
- Memory full indicator
- Water resistant
- Shock resistant

**SPECIFICATIONS:**

- ◆ Color: black
- ◆ Primary Digit Height: 0.25 in. (6.4mm)
- ◆ Display Size: 1.35 x 0.9 in. (35 x 23mm)
- ◆ Dimensions: 2.8 x 2.2 x 0.6 in. (71 x 96 x 15mm)
- ◆ Weight: 2.7 oz. (76.5g)
- ◆ Power Source: 1 “CR2016” battery (included)

**INCLUDES:**

- Lanyard • Battery • User’s Manual
- 1-Year Limited Warranty

UPC	NO.
31025 0	SW888L



SW269  
N

## STOPWATCH WITH CLOCK AND ALARM – SW269

**FEATURES:**

- Count-up to 39:59:59
- Displays lap time, hours, minutes, seconds, month, day and date
- 1/100 second precision (for first 40 minutes)
- Daily alarm and hourly chime
- 12 or 24 hour selectable clock with alarm feature
- Water resistant

**SPECIFICATIONS:**

- ◆ Color: black
- ◆ Digit Height: 0.5 in. (12.7mm)
- ◆ Display Size: 1.2 x 0.8 in. (30 x 20mm)
- ◆ Dimensions: 2.6 x 2.1 x 0.55 in. (66 x 53 x 14mm)
- ◆ Weight: 2.6 oz. (73.7g)
- ◆ Power Source: 1 “CR2016” battery (included)

**INCLUDES:**

- Lanyard • Battery • User’s Manual
- 1-Year Limited Warranty

UPC	NO.
31005 2	SW269



### 3-IN-1 TIMER FOR THE VISUALLY AND HEARING CHALLENGED – TI150

Ideal for physical therapy or noisy environments.

#### FEATURES:

- Count hours + minutes or minutes + seconds
- Choose 1, 2 or 3 countdown alarms: red flasher, loud beeper and/or vibration
- Mounts with spring clip, stand or magnet



#### SPECIFICATIONS:

- ◆ Range: 0 to 19 hours, 59 minutes/0 to 99 minutes, 59 seconds
- ◆ Digit Height: 0.63 in. (16mm)
- ◆ Display Size: 1.2 x 0.7 in. (30 x 18mm)
- ◆ Dimensions: 2.9 x 1.9 x 1.2 in. (73 x 49 x 30mm)
- ◆ Weight: 2 oz. (57g)
- ◆ Power Source: 2 “AAA” batteries (included)

#### INCLUDES:

- Batteries • User’s Manual
- 1-Year Limited Warranty

UPC	NO.
30110 4	TI150



TI150  
**N**



### 100 MINUTE COUNT-UP AND COUNT-DOWN TIMER WITH MEMORY– TI170

#### FEATURES:

- Timer and stopwatch
- Count-down from 99:59
- Count-up to 99:59
- Displays minutes and seconds
- Automatic memory
- Loud alarm
- Large display



#### SPECIFICATIONS:

- ◆ Color: white
- ◆ Digit Height: 0.5 in. (13mm)
- ◆ Display Size: 1.9 x 0.83 in. (48 x 21mm)
- ◆ Dimensions: 3.1 x 2.7 x 1 in. (79 x 69 x 25mm)
- ◆ Weight: 2.25 oz. (64g)
- ◆ Power Source: 1 “AAA” battery (included)

#### INCLUDES:

- Magnet • Stand and clip on back
- Battery • User’s Manual
- 1-Year Limited Warranty

UPC	NO.
30105 0	TI170



TI170

### FOUR CHANNEL TIMER/CLOCK WITH MEMORY RECALL – TI388

#### FEATURES:

- 4 independent count-down timers/stopwatches
- Count-down from 99:59:59
- Count-up to 99:59:59
- 1 minute alarm
- Memory recalls previous time setting
- Automatically counts-up after reaching zero
- 12 or 24 hour clock display
- LCD displays hours, minutes & seconds



#### SPECIFICATIONS:

- ◆ Color: white
- ◆ Digit Height: 0.63 in. (16mm)
- ◆ Display Size: 1.88 x 0.88 in. (48 x 22mm)
- ◆ Dimensions: 2.88 x 2.5 x 0.63 in. (73 x 64 x 16mm)
- ◆ Weight: 2.25 oz. (64g)
- ◆ Power Source: 1 “LR44” battery (included)

#### INCLUDES:

- Magnet • Stand and Clip on Back
- Battery • User’s Manual
- 1-Year Limited Warranty

UPC	NO.
30050 3	TI388



TI388  
**N**



# Timers



TI899B

## 10 HOUR TIMER WITH JUMBO DISPLAY – TI899B

**FEATURES:**

- Clock, stopwatch and countdown timer
- 10 hour (600 minute) range
- One second resolution
- Count down from 9:59:59
- Count up to 9:59:59
- Jumbo display
- 12/24 hour format
- Magnetic back with stand

**SPECIFICATIONS:**

- ◆ Color: black
- ◆ Digit Height: 0.75 in. (19mm)
- ◆ Display Size: 2.25 x 0.88 in. (57 x 22mm)
- ◆ Dimensions: 3 x 2.5 x 0.75 in. (76 x 64 x 19mm)
- ◆ Weight: 3.2 oz. (91g)
- ◆ Power Source: 1 “AAA” battery (included)

**INCLUDES:**

- Magnet
- Stand and clip on back
- Battery
- User’s Manual
- 1-Year Limited Warranty

UPC	NO.
30095 4	TI899B



TI895B  
N

## DUAL TIMER WITH CLOCK AND JUMBO DISPLAY – TI895B

Two count-down timers work simultaneously.

**FEATURES:**

- Count-down from 23:59:59
- Count-up to 19:59:59
- Large digital display
- 12 or 24 hour clock
- Lock mode
- Bracket for wall mounting



**SPECIFICATIONS:**

- ◆ Color: black
- ◆ Digit Height: 1 in. (25mm)
- ◆ Display Size: 3 x 2.5 in. (76 x 64mm)
- ◆ Dimensions: 5.5 x 3.75 x 1 in. (140 x 95 x 25mm)
- ◆ Weight: 6.5 oz. (184g)
- ◆ Power Source: 1 “AAA” battery (included)

**INCLUDES:**

- Magnet
- Stand and Clip on Back
- Battery
- User’s Manual
- 1-Year Limited Warranty

UPC	NO.
30075 6	TI895B



TI872

## BIG DIGIT DESKTOP DUAL TIMER/CLOCK – TI872

**FEATURES:**

- Clock with 2 count-down timers and stopwatch
- Count-down from 23:59:59
- Count-up to 23:59:59
- Timer and clock display hours, minutes and seconds
- Counts-up after reaching zero
- Memory function recalls previous timing cycle
- 12 or 24 hour selectable clock
- Extra large display



**SPECIFICATIONS:**

- ◆ Digit Height: 0.75 in. (19mm)
- ◆ Display Size: 2.25 x 0.8 in. (57 x 20mm)
- ◆ Dimensions: 2.65 x 2.4 x 0.65 in. (67 x 61 x 17mm)
- ◆ Weight: 2.5 oz. (71g)
- ◆ Power Source: 1 “AAA” battery (included)

**INCLUDES:**

- Magnet on Back
- Battery
- User’s Manual
- 1-Year Limited Warranty

UPC	NO.
30065 7	TI872



TI239

## DESKTOP TIMER WITH STOPWATCH – TI239

**FEATURES:**

- Timer and stopwatch
- Count-down from 99:59
- Count-up to 99:59
- Displays minutes and seconds
- Counts-up after reaching zero
- Easy to operate

**SPECIFICATIONS:**

- ◆ Dimensions: 2.45 x 2.25 x 0.4 in. (62 x 57 x 10mm)
- ◆ Weight: 1.5 oz. (43g)
- ◆ Power Source: 1 “LR44” battery (included)

**INCLUDES:**

- Magnet
- Stand and Clip on Back
- Battery
- User’s Manual
- 1-Year Limited Warranty

UPC	NO.
30020 6	TI239

### HAND HELD TIMER WITH JUMBO DISPLAY – TI267

**FEATURES:**

- Count-down from 19:59
- Displays hours and minutes
- Extra large digits
- Easy to operate
- Loud alarm



**SPECIFICATIONS:**

- ◆ Color: white
- ◆ Digit Height: 0.75 in. (19mm)
- ◆ Display Size: 1.8 x 0.75 in. (46 x 19mm)
- ◆ Dimensions: 3.5 x 2.3 x 0.75 in. (89 x 58 x 19mm)
- ◆ Weight: 1.5 oz. (43g)
- ◆ Power Source: 1 “AAA” battery (included)

**INCLUDES:**

- Magnet and Clip on Back
- Battery
- User’s Manual
- 1-Year Limited Warranty

UPC	NO.
30025 1	TI267



TI267

### ECONOMY COUNT-DOWN TIMER – TI268

**FEATURES:**

- Count-down from 19:59
- Displays hours and minutes
- Extra loud alarm
- Economy model
- Easy operation



**SPECIFICATIONS:**

- ◆ Color: White
- ◆ Digit Height: 0.25 in.
- ◆ Display Size: 0.71 x 0.32 in.
- ◆ Dimensions: 2.44 x 1.97 x 0.47 in. (62 x 50 x 12mm)
- ◆ Weight: 1 oz. (43g)
- ◆ Power Source: 1 “LR44” battery (included)

**INCLUDES:**

- Magnet, stand and clip on back

UPC	NO.
30030 5	TI268



TI268



### LONG RING 60 MINUTE ANALOG TIMER – AT60LR

**FEATURES:**

- Wide variety of applications in sports
- Sturdy construction
- No batteries required



**SPECIFICATIONS:**

- ◆ Range: 0 to 60 minutes
- ◆ Dimensions: 3.9 x 3.4 x 2.6 in. (100 x 85 x 65mm)
- ◆ Weight: 4.6 oz. (130g)

UPC	NO.
30081 7	AT60LR



AT60LR



DSM8925



## SOUND METER WITH MEMORY & JUMBO DISPLAY – DSM8925

Ideal for making accurate sound level measurements of a machine or an environment.

### FEATURES:

- Jumbo digital LCD + analog bar graph
- “A” or “C” frequency weighting
- Fast or slow time weighting
- Autoranging or manual ranging
- Min/Max memory + max hold
- Auto power off
- Analog output for data logging
- Calibrates to standard 94dB signal
- Tripod mount socket on back

- ◆ Frequency Range: 31.5 Hz to 8 kHz
- ◆ Display Window Size: 1.18 (W) x 1.38 (H) in. (30 x 35mm)
- ◆ Digit Height: 0.6 in. (15.2mm)
- ◆ Microphone Diameter & Type: 0.5 in. (12.7mm) electret condenser
- ◆ Operating Temperature: 32° to 122°F (0° to 50°C) @<80% RH
- ◆ Dimensions: 9 x 2.25 x 1.73 in. (229 x 57 x 44mm)
- ◆ Weight: 4.6 oz. (130g)
- ◆ Power Source: 4 “AAA” batteries (included)

### SPECIFICATIONS:

- ◆ Measurement Range: 40 to 130 dB over four ranges
- ◆ Measurement Accuracy: ±2 dB
- ◆ Digital Display Resolution: 0.1 dB
- ◆ Analog Bar Graph Resolution: 1 dB

### INCLUDES:

- Wind Shield Ball
- Batteries
- User’s Manual
- 1-Year Limited Warranty

UPC	NO.
41025 7	DSM8925



DC360BL

## DIGITAL COMPASS WITH BACKLIGHT

Check directions, day, date and time.

### FEATURES:

- Solid compass arrow
- Displays eight cardinal points
- Numeric heading
- °F/°C switch
- Field calibratable
- Lock function
- Day and date display
- Clock with snooze alarm
- Water resistant
- Rugged rubber clip

### SPECIFICATIONS:

- ◆ Numeric Heading: displays every 5°
- ◆ Compass Arrow: moves in 22.5° increments
- ◆ Temperature Accuracy: ±2°F (±1°C)
- ◆ Directional Accuracy: ±20°
- ◆ Dimensions: 5.25 x 2.63 x 1 in. (134 x 67 x 25mm)
- ◆ Weight: 6.4 oz. (181g)
- ◆ Power Source: 3 “AAA” batteries (included)

### INCLUDES:

- Lanyard
- Batteries
- Instructions

UPC	NO.
62065 6	DC360BL



DBAR880



## DESKTOP DIGITAL WEATHER FORECASTER WITH CLOCK & CALENDAR – DBAR880

Measures and displays indoor and outdoor temperature, humidity and barometric pressure.

### FEATURES:

- Also displays 12-hour barometric pressure history
- Min/Max temperature and humidity memory
- Temperature trend indicator
- Moon cycle with tide indicator
- Alarm clock with snooze, day and date
- Full calendar
- Hi precision barometric weather forecast
- Forecast: sunny, partial sunny, cloudy, rainy, stormy
- 3-Channel wireless thermometer
- Backlit display
- °F/°C, 12/24 hour clock selectable

- ◆ Temperature Accuracy: ±1.8°F (1°C) from 32° to 104°F (0° to 40°C); ±2.7°F (1.5°C) from 104° to 122°F (40° to 50°C)
- ◆ Relative Humidity (RH) Range: 20% to 99%
- ◆ RH Accuracy: ±5% from 30% to 90%RH; not guaranteed from 20% to 29%RH or from 91% to 99%RH
- ◆ Altitude Compensation Range: -984 to 3937 ft. (-300 to 1200m)
- ◆ Dimensions: Base Unit: 27.5 (L) x 4.125 (W) in. (699 x 105mm) Remote Unit: 3.5 (L) x 2.5 (W) in. (89 x 64mm)
- ◆ Power Source: Base Unit: 2 “AA” batteries (not included) Remote Unit: 2 “AAA” batteries (not included)

### SPECIFICATIONS:

- ◆ Barometric Pressure Range: 800 to 1100 mbar (23.6 to 32.5 in.Hg)
- ◆ Barometric Pressure Accuracy: ±5 mbar (±0.15 in.Hg)
- ◆ Barometric Pressure Resolution: 1 mbar
- ◆ Temperature Range: Base Station: 32° to 122°F (0° to 50°C) Remote Sensor: -4° to 140°F (-20° to 60°C)

### INCLUDES:

- Base and remote units
- User’s Manual
- 1-Year Limited Warranty

UPC	NO.
60018 4	DBAR880

### LIGHTNING SEEKER™ PERSONAL LIGHTNING DETECTOR – LD7

Ideal for early storm warnings and storm directions and protection for any outdoor activity.

#### FEATURES:

- Can be clipped on your belt or hung from your belt loop
- Gives you early warning of pending storms and lightning at various distances from 0 to 40 miles away
- Multiple alarm signals include an audible alarm, a vibration alarm and sequentially illuminating LED's at various distance intervals: 24 to 40 miles, 12 to 24 miles, 6 to 12 miles and 0 to 6 miles
- Determines if the danger is approaching, stationary or departing
- FCC, CE, RoHS, WEEE approved

#### SPECIFICATIONS:

- ◆ Ranges: 0 to 6 miles; 6 to 12 miles; 12 to 24 miles; 24 to 40 miles
- ◆ Dimensions: 3.31 x 2.17 x 0.96 in. (84 x 55 x 24mm)
- ◆ Weight: 2.6 oz. (74g)
- ◆ Power Source: 2 "AAA" batteries (included)

#### INCLUDES:

- Carabiner Clip • Batteries • User's Manual
- 1-Year Limited Warranty

UPC	NO.
01368 7	LD7



LD7

### DELUXE LIGHTNING DETECTOR – LD50

Ideal for storm warning and storm direction.

#### FEATURES:

- Detects storms within 40 miles
- Senses if the storm is moving towards, away from, or parallel to your location
- Identifies severe thunderstorms as well as storms that can produce dangerous winds, heavy rains or tornadoes
- Starts detecting thunderstorms up to 70 miles away, registers activity at 40 miles
- Used by Little League teams, golf courses, and recreational districts
- Uses LEDs as display
- Hand-held, table or wall mountable
- Optional wall mount accessory available (LD50MB)

#### SPECIFICATIONS:

- ◆ Ranges: 0 to 3 mi; 3 to 8 mi; 8 to 20 mi; 20 to 40 mi
- ◆ Dimensions: 6.5 x 3.1 x 1.5 in. (165 x 79 x 38mm)
- ◆ Weight: 10.8 oz. (306g) (w/o batteries)
- ◆ Power Source: 2 "9V" batteries (included)

#### INCLUDES:

- Rugged, Weather-Resistant Plastic Case
- Batteries
- User's Manual
- 1-Year Limited Warranty

UPC	NO.
60600 1	LD50
60615 5	LD50MB Wall Mount Accessory



LD50

### PROFESSIONAL WIRELESS WEATHER STATION – WS821

Ideal for professional and amateur weather forecasters.

#### FEATURES:

- Wirelessly transmits outdoor temperature, RH, rainfall amount, and wind velocity and direction from exterior sensors to display station up to 325 ft. (100m) away
- Expandable by up to 5 temperature-humidity sensors for remote climate control of children's room, wine cellar, greenhouse, etc.
- Indoor temperature and humidity with comfort level indicator
- Weather forecast with symbols and trend of atmospheric pressure
- Absolute and relative atmospheric pressure with 24 hours history
- Bar graph indication of atmospheric pressure, temperature or humidity over past 24 hours
- Rising and setting times of sun and moon
- Calculates Wind Chill Index and dew point
- Programmable alarms for temperature and storm conditions

- ◆ RH Range/Accuracy: 0 to 99%/±5%
- ◆ Rainfall Range/Accuracy: 0 to 78.73 in. (daily); 0 to 787.3 in. (weekly, monthly)/ ±5%
- ◆ Wind Speed Range/Accuracy : 0 to 199.9mph/ ±2mph
- ◆ Wind Direction Accuracy: ±11.25°
- ◆ Atmospheric Pressure Range/Accuracy: 14.75 to 32.44 in.Hg (374.5 to 823.8 mmHg)/ ±0.015 in.Hg (0.38 mmHg)
- ◆ Power Sources: AC adaptor for main unit (included) + 10 "AA" batteries (not included)— 4 for main unit, 2 ea. for remote temperature-humidity sensor, wind sensor, rain sensor

#### INCLUDES:

- Display Station
- Power Adaptor 7.5V AC/DC
- Temperature-Humidity Sensor
- Wind Sensor with Mounting Materials
- Rain Sensor with Mounting Materials
- User's Manual
- 1-Year Limited Warranty

UPC	NO.
08210 2	WS821
01523 0	TR831 Additional Temperature-Humidity Wireless Transmitter (optional)



WS821

**N** Indicates optional NIST calibration is available

# Refractometers

## WIDE RANGE, HIGH ACCURACY PROTEIN/URINE DIGITAL REFRACTOMETER WITH ATC – DREF/UP320



DREF/UP320

**FEATURES:**

- High accuracy
- Uses distilled water as calibration reference
- Also measures, displays and automatically compensates for temperatures
- °F or °C temperature display unit
- Auto power off
- Low voltage alert

**SPECIFICATIONS:**

- ◆ Measurement Ranges/Accuracies: 1 to 1.050 Urine SG/±0.002%; 0 to 12 g/dl serum protein/±0.2%; 1.3330 to 1.3900 refractive index/±0.0003
- ◆ Temperature Measurement Range: 32° to 104°F (0° to 40°C)

- ◆ Temperature Measurement Accuracy: ±2°F (1°C)
- ◆ Auto Power Off: After 3 minutes of inactivity
- ◆ Operating Temperature Range: 32° to 90°F (0° to 35°C)
- ◆ Dimensions: 7.28 x 2.32 x 1.77 in. (185 x 59 x 45mm)
- ◆ Weight: 8.11 oz. (230g)
- ◆ Power Source: 1 “9V” battery (included)

**INCLUDES:**

- Carrying Case
- Battery • Operating Instructions
- 1-Year Limited Warranty

UPC	NO.
44402 7	DREF/UP320



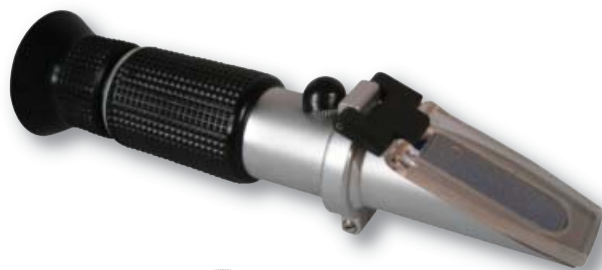
A refractometer measures a substance’s index of refraction, which is determined by its composition.

In practice, traditional and digital refractometers are used to measure:

- The concentration of sugar or other soluble solids in juices, syrups or similar solutions
- The salinity or specific gravity of watery solutions
- The viscosity of refrigerant oils, glycols, brake fluids, and polymers

Many refractometers use the unit Brix, which can be expressed as a percentage or in degrees. Others use relative units such as the SG (for specific gravity) or the RI (for refractive index)

*All of our handheld traditional refractometers have a metal body with a cushioned eyepiece, a rubber hand grip, and a calibration screen. Included with each is a calibration screwdriver, a plastic pipette and a carrying case.*



REF312ATC

## PROTEIN/URINE ANALOG REFRACTOMETER WITH ATC – REF312ATC

**FEATURES:**

- Measures the specific gravity and refractive index of urine, blood serum, plasma, albumen, and protein
- Automatic temperature control (ATC)
- Metal body
- Rubber hand grip blocks heat
- Calibration screen
- Cushioned rubber eyepiece
- Non-roll stand
- Prism mounted in high impact plastic

**SPECIFICATIONS:**

- ◆ Range: 0 to 12 g/dl
- ◆ Specific Gravity: 1.0 to 1.050 s/g
- ◆ Refractive Index: 1.330 to 1.360 RI
- ◆ Resolution: 0.2 g/dl; 0.005 s/g
- ◆ Dimensions (L x Dia.): 6.18 in. x 1.57 in.
- ◆ Weight: 0.44 lbs. (0.7 oz.)

**INCLUDES:**

- Plastic pipette • Carrying case
- Calibration screwdriver

UPC	NO.
44312 5	REF312ATC



# ATHLETIC TRAINING and SPORTS MEDICINE INSTRUMENTS

## Index / Price List

MODEL NO.	UPC CODE	PAGE	KEY	DESCRIPTION	PKG. QTY	PKG. TYPE	LIST PRICE (US\$)
<b>ATHLETIC TRAINING and SPORTS MEDICINE INSTRUMENTS</b>							
<b>Heat Index / Temperature / Humidity Meters</b>							
WBG78758	08758 9	2	Ⓒ	HEAT INDEX MONITOR WITH WET BULB GLOBE TEMPERATURE	1	BX	\$169.95
WBG78778	01308 3	2	Ⓒ	DELUXE WBG78 HEAT INDEX MONITOR WITH 75MM BLACK BALL	1	BX	\$189.95
SAM800HI	10100 1	2	Ⓒ	POCKET SIZED HEAT INDEX MONITOR - SPORTS MODEL	1	BX	\$99.99
<b>Temperature / Humidity Meters</b>							
EP8706	10041 7	3	Ⓒ	CALIBRATABLE DIGITAL PSYCHROMETER	1	BX	\$89.99
SAM990DW	10025 7	3	Ⓒ	DIGITAL THERMO-HYGROMETER/PSYCHROMETER WITH DEW POINT AND WET BULB	1	BL	\$99.99
SP100CR	10215 2	3		°C SLING PSYCHROMETER, RED SPIRIT	1	BX	\$49.95
SP100FR	10205 3	3		°F SLING PSYCHROMETER, RED SPIRIT	1	BX	\$49.95
EP8703	01632 9	4	*	CALIBRATABLE MULTI-FUNCTION THERMO-HYGROMETER	1	PB	\$49.99
EP8710	01631 2	4	* Ⓒ	CALIBRATABLE MULTI-FUNCTION THERMO-HYGROMETER/PSYCHROMETER (Replaces EM8716)	1	PB	\$69.99
EP8706	10041 7	4	Ⓒ	CALIBRATABLE DIGITAL THERMO-HYGROMETER/PSYCHROMETER	1	BX	\$89.99
PTH8708	10005 9	4		PEN TYPE AND POCKET SIZED THERMO-HYGROMETER	1	BX	\$69.99
B600FC	01636 7	4	* Ⓒ	HIGH TEMPERATURE, WALL MOUNTABLE ANALOG THERMO-HYGROMETER	1	BX	\$49.99
<b>Multi-Parameter Anemometers</b>							
DAF3008	01667 1	5	*	3-PARAMETER MINI ANEMOMETER	1	BL	\$39.99
DAF3012M	01697 8	5	*	9-PARAMETER MINI ANEMOMETER/PSYCHROMETER WITH COMPASS AND MEMORY	1	BL	\$129.00
<b>Airflow Meters</b>							
DLAF8000	40110 1	6		4-IN-1 ENVIRONMENTAL AIRFLOW METER WITH "K" PORT	1	BX	\$159.99
DAF3010B	40105 7	6		THE SEEKER™ AIRFLOW METER	1	BL	\$39.99
DAF800	40105 7	6		MINI AIRFLOW METER W/ TEMPERATURE	1	BX	\$79.99
<b>Clocks / Stopwatches</b>							
DJC381	32010 5	7		JUMBO DISPLAY WALL OR DESK CLOCK WITH TEMPERATURE	1	BX	\$49.95
SW100A	30999 5	7	Ⓒ	MULTI-FUNCTION BLACK STOPWATCH	1	BL	\$12.95
SW100AY	31002 1	7	Ⓒ	MULTI-FUNCTION YELLOW STOPWATCH	1	BL	\$12.95
SW888M	31035 9	8	Ⓒ	STOPWATCH WITH CALENDAR, CLOCK AND BACKLIGHT	1	PB	\$39.99
SW888L	31025 0	8	Ⓒ	THREE LINE STOPWATCH WITH PROGRAMABLE MEMORY	1	PB	\$49.99
SW269	31005 2	8	Ⓒ	STOPWATCH WITH CLOCK AND ALARM	1	PB	\$19.99
<b>Timers</b>							
TI150	30110 4	9		3-IN-1 TIMER FOR THE VISUALLY AND HEARING CHALLENGED	1	BL	\$19.99
TI170	30105 0	9		100 MINUTE COUNT-UP AND COUNT-DOWN TIMER WITH MEMORY	1	BL	\$13.99
TI388	30050 3	9	Ⓒ	FOUR CHANNEL TIMER/CLOCK WITH MEMORY RECALL	1	BL	\$26.99
TI899B	30095 4	10		10 HOUR TIMER WITH JUMBO DISPLAY	1	BL	\$19.99
TI895B	30075 6	10	Ⓒ	DUAL TIMER WITH CLOCK AND JUMBO DISPLAY	1	BL	\$23.95
TI872	30065 7	10		BIG DIGIT DESKTOP DUAL TIMER/CLOCK	1	BL	\$16.99
TI239	30020 6	10		DESKTOP TIMER WITH STOPWATCH	1	BX	\$24.95
TI267	30025 1	11		HAND HELD TIMER WITH JUMBO DISPLAY	1	BL	\$9.99
TI268	30030 5	11	XX NCL	ECONOMY COUNT-DOWN TIMER	1	BL	\$8.99
AT60LR	30081 7	11	XX NCL	LONG RING 60 MINUTE ANALOG TIMER	1	BL	\$9.99
<b>Sound, Direction and Weather Meters</b>							
DSM8925	41025 7	12	XX Ⓒ	SOUND METER WITH MEMORY & JUMBO DISPLAY	1	BX	\$99.99
DC360BL	62065 6	12	XX NCL	DIGITAL COMPASS WITH BACKLIGHT	1	BL	\$49.99
DBAR880	60018 4	12	Ⓒ	DESKTOP DIGITAL WEATHER FORECASTER WITH CLOCK & CALENDAR	1	BX	\$69.99
<b>Lightning Detectors and Weather Station</b>							
LD7	01368 7	13		LIGHTNING SEEKER™ PERSONAL LIGHTNING DETECTOR	1	BL	\$79.95
LD50	60600 1	13		DELUXE PRECISION LIGHTNING DETECTOR	1	BB	\$299.99
WS821	08210 2	13		PROFESSIONAL WIRELESS WEATHER STATION	1	BX	\$199.95
<b>Refractometers</b>							
DREF/UP320	44420 7	14		WIDE RANGE, HIGH ACCURACY PROTEIN/URINE DIGITAL REFRACTOMETER WITH ATC	1	BX	\$399.00
REF312ATC	44312 5	14		PROTEIN/URINE ANALOG REFRACTOMETER WITH ATC	1	BX	\$99.99
<b>PRODUCT KEY: *</b> = New Item, <b>XX</b> = Discontinued after supply is depleted, <b>Ⓒ</b> = NIST Certifiable							
<b>PACKAGE TYPE: BL</b> = Blister Card, <b>BX</b> = White Box, <b>BB</b> = Blank Box, <b>PB</b> = Printed Box							



## Specialty Tools & Instruments

---

### General Tools & Instruments

80 White Street, New York, NY 10013 3567

PHONE (212) 431-6100 FAX (212) 431-6499 TOLL FREE (800) 697-8665

e-mail: [gentools@generaltools.com](mailto:gentools@generaltools.com)

[www.generaltools.com](http://www.generaltools.com)

©2014 GENERAL TOOLS & INSTRUMENTS

Not responsible for typographical errors.

Catalog No. ATSM14 Printed in USA 7/14

