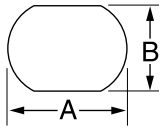


## Double "D" Punches

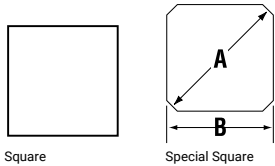


### CAT. NO

HOLE SIZE				MAXIMUM CAPACITY MILD STEEL		OPERATION TYPE	SET (INCLUDES PUNCH, DIE DRAW STUD AND NUTS)	DRAW STUD	BB DRIVE NUT	COUNTER NUT	MINIMUM PILOT HOLE		WEIGHT		OPTIONAL ADAPTER FOR HYDRAULIC DRIVERS
IN		mm		ga	mm						IN	mm	LB	KG	
A	B	A	B												
0.769	0.642	19.5	16.3	14	2.0	Hand/Hydr.	61086**	34421	34733G	2929AV	.500	12.7	1.1	.50	339670
0.795	0.697	20.2	17.6	14	2.0	Hand/Hydr.	61089**	34421	34733G	2929AV	.500	12.7	1.1	.50	339670
0.913	0.756	23.2	19.2	14	2.0	Hand/Hydr.	61092**	34421	34733G	2929AV	.500	12.7	1.2	.54	339670
0.913	0.795	23.2	20.2	14	2.0	Hand/Hydr.	61095**	34421	34733G	2929AV	.500	12.7	2	.9	339670
1.375	1.125	34.9	28.6	14	2.0	Hand/Hydr.	60098**	60166	60165	60258	.875	23.8	2.5	1.1	601670

∅For use with any Greenlee Hydraulic Driver or Battery-Powered Driver  
 For maximum draw stud life, Greenlee recommends the use of battery or hydraulic drivers  
 \*\*Sold as Unit only

## Square and Special Square Punches



### CAT. NO

HOLE SIZE				MAXIMUM CAPACITY MILD STEEL		OPERATION TYPE	SET (INCLUDES PUNCH, DIE DRAW STUD AND NUTS)	PUNCH	DIE	DRAW STUD	BB DRIVE NUT	COUNTER NUT	MINIMUM PILOT HOLE		WEIGHT		OPTIONAL ADAPTER FOR HYDRAULIC DRIVERS
IN		mm		ga	mm								IN	mm	LB	KG	
1/2"	0.500 x 0.500	12.7 x 12.7	16	1.5	∅Hand/Hydr.	60001	-	-	60115	60120	2046AV	.375	9.5	1.1	.50	601140	
5/8"	0.625 x 0.625	15.9 x 15.9	14	2.0	∅Hand/Hydr.	61004	-	-	34421	34733G	2929AV	.500	12.7	1.5	.68	339670	
3/4"	0.750 x 0.750	19.1 x 19.1	14	2.0	∅Hand/Hydr.	61007**	-	-	34421	34733G	2929AV	.500	12.7	1.5	.68	339670	
7/8"	0.882 x 0.882	22.4 x 22.4	14	2.0	∅Hand/Hydr.	61010**	-	-	34421	34733G	2929AV	.500	12.7	1.8	.82	339670	
-	0.945 x 0.945	24.0 x 24.0	14	2.0	∅Hand/Hydr.	61013**	-	-	34421	34733G	2929AV	.500	12.7	2.3	1.0	339670	
1"	1.000 x 1.000	25.4 x 25.4	14	2.0	∅Hand/Hydr.	60016	60017	60018	60117	60165	60258	.625	15.9	2.4	1.1	601670	
-	1.772 x 1.772	45.0 x 45.0	10	3.5	∅Hydr. Only	60287	60288	60289	60118	-	60235	1.188	30.2	6.0	2.7	∅	
1-13/16"	1.811 x 1.811	46.0 x 46.0	10	3.5	∅Hydr. Only	60019	60020	60021	60118	-	60235	1.188	30.2	6.2	2.8	∅	
2"	2.000 x 2.000	50.8 x 50.8	10	3.5	∅Hydr. Only	60168	60169	60170	60118	-	60235	1.188	30.2	6.9	3.1	∅	
2-11/16"	2.677 x 2.677	68.0 x 68.0	10	3.5	∅Hydr. Only	60171	60172	60173	60118	-	60235	1.188	30.2	10.1	4.6	∅	
3-5/8"	3.622 x 3.622	92.0 x 92.0	10	3.5	*Hydr. Only	60174	60175	60176	60118	-	60235	1.188	30.2	14.8	6.7	*	
4-1/8"	4.125 x 4.125	104.8 x 104.8	10	3.5	*Hydr. Only	60177	60178	60179	60118	-	60235	1.188	30.2	18.8	8.5	*	
-	5.433 x 5.433	138.0 x 138.0	14	2.0	*Hydr. Only	60234	60023	60024	60118	-	60235	1.188	30.2	20	9.1	*	

### Special Square

0.886(A)	0.791(B)	22.5 ∅(A) 20.1(B)	14	2.0	Hand/Hydr.	61125**	-	-	34421	34733G	2929AV	.500	12.7	.7	.3	33967
----------	----------	-------------------	----	-----	------------	---------	---	---	-------	--------	--------	------	------	----	----	-------

\*For use with with Hand and Foot Pump Hydraulic Drivers with Ram. For use with any Greenlee Hydraulic Driver or Battery-Powered Driver. \*\* Sold as Unit only  
 ∅For use with any Greenlee Hydraulic Driver or Battery-Powered Driver. For maximum draw stud life, Greenlee recommends the use of battery or hydraulic drivers