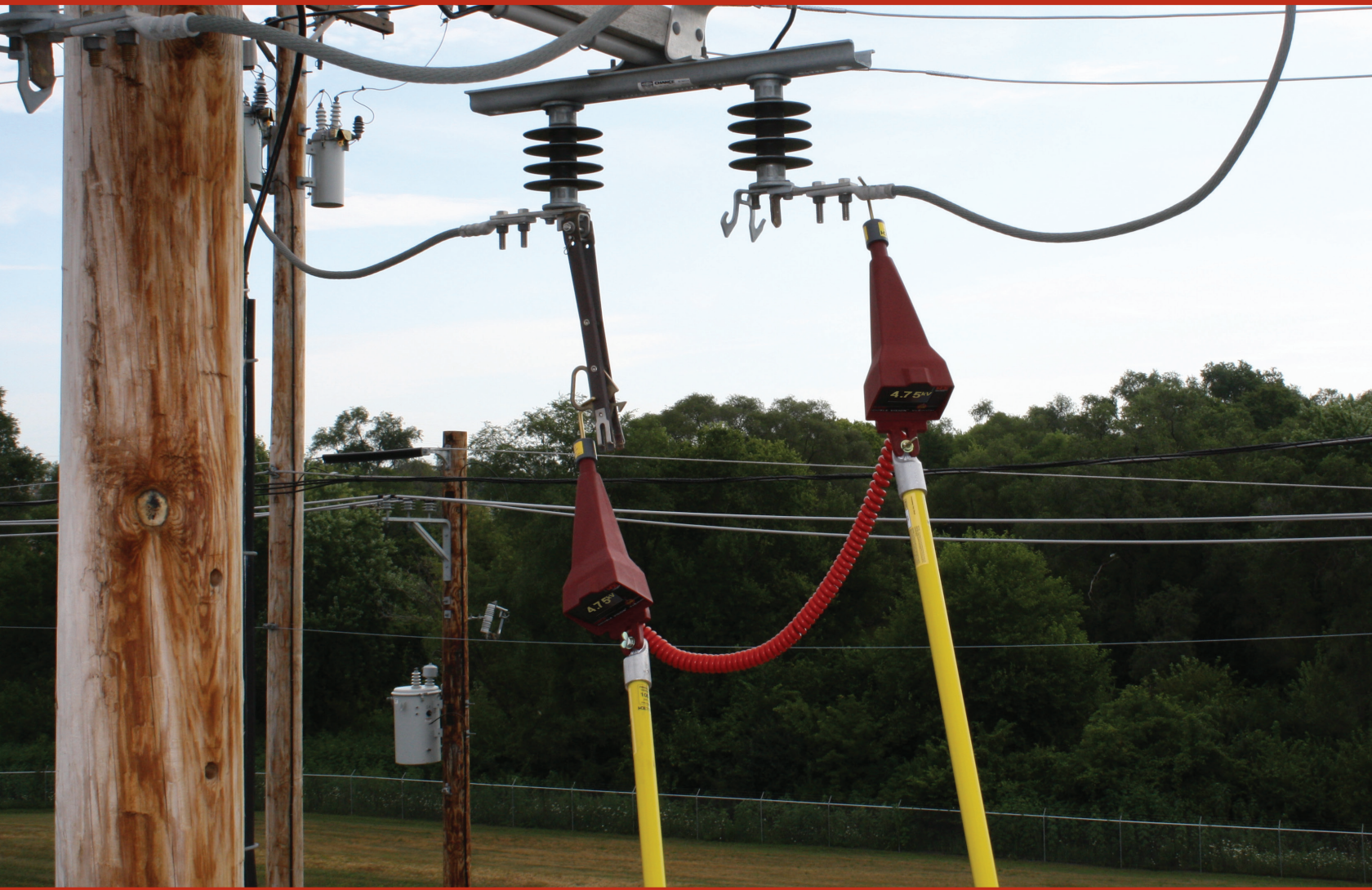


# DOUBLE VISION®

## DUAL DISPLAY DIGITAL VOLTMETER

High Accuracy  
Digital Voltmeter



### Raise the Standard – The All New Double Vision® Digital Voltmeter/Phaser

The Dual Display Digital Voltmeter, model DDVM-40, is a compact, high accuracy dual display voltmeter and phasing set with capacitive test point mode and peak hold. Voltage is displayed on the two large, bright LED displays that can easily be read from a distance or in bright conditions. The two LED displays are synchronized so that the same voltage reading is shown on both displays.



# DOUBLE VISION<sup>®</sup>

## Dual Display Digital Voltmeter

The DDVM-40 measures voltage from 5V to 40kV. The two stick design can be used in both overhead and underground applications – accurate & repeatable to within 1%.

### Double Display is Key –

Oversized, bright LED read out on two displays makes voltage measurements easy to read from a distance or in low light conditions.

### Versatility..... Simplified

Single button interface controls all modes:

- Line to line measurements
- Line to ground measurements
- Capacitive test point
- Cable fault testing
- Real time & peak hold reporting

### Defined by the Jobsite –

Lightweight, weather-resistant construction, ideal for use in tight work environments with minimum approach distances or with storm duty during disaster relief.



## Voltmeter and phasing operations for virtually all overhead and underground applications

- 1 Oversized, dual digital LED display
- 2 One button operation for test modes
- 3 Ultra-light, high-strength molded housing
- 4 Dual hotstick connections - universal spline and shotgun stick
- 5 Dual battery monitor with auto shut off

SPECIFICATIONS	
MODEL NUMBER	DDVM-40
OPERATING VOLTAGE RANGE	5V to 40kV
OPERATING FREQUENCY	25-1000Hz
ACCURACY	Within 1% of reading +/- 3 counts
LED NUMERAL HEIGHT	0.7", indicates 3 digits
BATTERY	9V lithium or alkaline, one in each display housing
BATTERY LIFE	8 hours continuous use
OPERATING TEMPERATURE RANGE	-20°F to +120°F (-29°C to +49°C)
WEIGHT (WITHOUT PROBES)	4.02 lbs (1.82kg)
DIMENSIONS (WITHOUT PROBES)	14" L x 4" H x 4 5/8" W (36cm x 10cm x 11cm)
CORD LENGTH	Retracted: 3.5' (1.7cm) Extended: 12' (3.6cm)



### Voltage and Phasing Mode

Secondary Voltages Starting at 5V - Primary Voltages up to 40kV

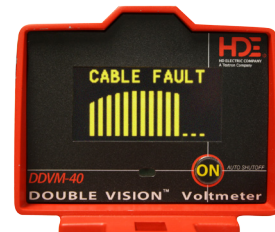
- Line-to-Line
- Line-to-Ground



### Capacitive Test Point Mode

Test Point feature (indicated by TP on display) for phasing and measuring voltage from elbow test points

- Test Point to Ground
- Test Point to Test Point



### Cable Fault Test Mode

When used with the Cable Fault Tester accessory, will test for leakage current in underground primary voltage cables



### Peak Hold Mode

Peak Hold mode (indicated by H on display) holds the highest reading when in Peak Hold mode. Default mode is real-time

# DOUBLE VISION® Dual Display Digital Voltmeter

## PROBES AND ACCESSORIES



### Overhead Probes

- OLPS-5 Overhead Hook Brass Probe  
Dimensions: 4.5" (11.4cm)  
Weight: 0.2 lbs. (0.09kg)
- OLPS-6 Overhead Pigtail Brass Probe  
Dimensions: 5.5" (14cm)  
Weight: 0.3 lbs. (0.14kg)



### Underground Elbow Probe

- EA-15/25 15kV & 25kV Class UD Loadbreak Elbow Probe  
Dimensions: 10" (25cm)  
Weight: 1.1 lbs. (0.50kg)



### Underground Dead Front Bushing Probes

- ASP-15/25 15kV & 25kV Class Insulated UD Probe for Loadbreak Bushings  
Dimensions: 9" (23cm) Weight: 0.9 lbs. (0.41kg)
- ASP-35U 35kV Insulated UD Probe for Loadbreak Bushings designed for both Elastimold® and Cooper™ (RTE) bushings  
Dimensions: 9.5" (24cm)  
Weight: 1.5 lbs. (0.68kg)



### Insulated Underground Probe

- GCP-1 General Contact Underground Distribution Probe  
Dimensions: 3" (7.6cm)  
Weight: 0.3 lbs. (0.14kg)



### Extension Hotsticks

- S-4H Extension hotstick with universal spline, foam filled, 1-1/4" diameter fiberglass. Length: 4' (1.2m)  
Weight: 2 lbs. (0.91kg)
- S-6H Extension hotstick with universal spline, foam filled, 1-1/4" diameter fiberglass. Length: 6' (1.8m)  
Weight: 3 lbs. (1.36kg)
- Other lengths and telescopic hotsticks available – contact factory for details



### Cable Fault Tester

- CFT-35 For use up to 35kV system voltages (21kV phase-to-ground)  
Dimensions: 14" (36cm)  
Weight: 0.8 lbs. (0.36kg)



### Proof Tester® Voltmeter Tester

- Produces 5kVDC at the test leads to confirm proper operation of voltmeters and phasers. 9V battery operated. 5000V output  
Dimensions: 5.75" x 3.5" x 1.5" (14.6cm x 8.9cm x 3.9cm)  
Weight: 0.9 lbs. (0.41kg)

## ORDERING INFORMATION

<b>DDVM-40</b>	Includes DDVM-40 with (2) 025-OLPS-5 and CS-DDVM Case
<b>DDVM-40/K01</b>	Kit Includes DDVM-40 with (2) 025-OLPS-5, (1) PT-5000B and CS-DDVM Case
<b>DDVM-40/K02</b>	Kit Includes DDVM-40 with (2) 025-OLPS-5, (1) PT-5000B, (2) ASP-15/25 and CS-DDVM Case
<b>DDVM-40/K03</b>	Kit Includes DDVM-40 with (2) 025-OLPS-5, (1) PT-5000B, (2) ASP-15/25, (1) CFT-35 and CS-DDVM Case
<b>025-OLPS-5</b>	Overhead Hook Brass Probe
<b>025-OLPS-6</b>	Overhead Pigtail Brass Probe
<b>PT-5000B</b>	Voltmeter Proof Tester -Test Voltmeter/Phasers Prior to Use. 9V Battery Operated, 5000V Output
<b>GCP-1</b>	General Purpose Insulated Probe
<b>ASP-15/25</b>	Underground Adapter Bushing Probe, 15kV & 25kV Class
<b>ASP-35U</b>	Underground Adapter Bushing Probe, 35kV (Universal) Class
<b>EA-15/25</b>	Loadbreak Elbow Adapter, 15kV & 25kV Class

<b>CFT-35</b>	Cable Fault Tester, 15, 25 and 35kV Class
<b>CS-DDVM</b>	Plastic Carrying Case for DDVM-40 and Kits
<b>S-4H</b>	4' Fixed Length Fiberglass Hotstick
<b>S-6H</b>	6' Fixed Length Fiberglass Hotstick

The use of a hotstick is required with the use of all DDVM devices



**T Equipment .NET**  
An Interworld Highway, LLC Company

Call Us 1.877.571.7901

**HDE** HD ELECTRIC COMPANY  
A Textron Company

1475 Lakeside Drive • Waukegan, Illinois 60085 U.S.A. • 847.473.4980  
fax 847.473.4981 • website: www.HDElectricCompany.com

All sales are subject to the terms and conditions of the Limited Warranty and Limitation of Liability set forth in the product Instruction Manual and at [www.HDElectricCompany.com](http://www.HDElectricCompany.com). Users must read and agree to the Limitation terms, as stated, before using the product. HD Electric Company is committed to ongoing review and improvement of its product lines, and thus reserves the right to modify product design and specifications without notice. HD Electric Company® products are available through HDE® sales representatives worldwide. Elastimold® is a registered trademark of ABB ASEA Brown Boveri Ltd. Cooper™ is a trademark of Eaton Corporation and/or its affiliates. Printed in U.S.A. - US patent 7,746, 051 © HD Electric Company 2017 • Bulletin DDVM-100c MA6474