

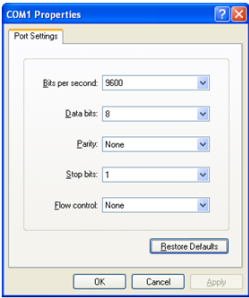
SWITCH USING THE FRONT CONTROL PANEL

To navigate different inputs manually and display them on the main screen simply press the left and right buttons. The “Channel Selected” light will indicate exactly what input channel is selected.

SWITCH USING REMOTE CONTROL

The HDNet4P can be controlled by remote control. Use the channel up and down keys to select the next input. The number keys can be used to select channels 1 through 4. The channel selection will be disabled when the HDNet-4P is in automatic mode.

SWITCH USING RS232



A standard serial data program such as HyperTerminal can be used to issue commands to the HDNet4P.

The settings are 9600 bits per second, 8 data bits, no parity, 1 stop bit, and no flow control.

(As shown at left)

FUNCTION	COMMAND
Switch to channel 1	//M1
Switch to channel 2	//M2
Switch to channel 3	//M3
Switch to channel 4	//M4
Hotplug channel 1	//h1
Hotplug channel 2	//h2
Hotplug channel 3	//h3
Hotplug channel 4	//h4
Check EDID	//d

The “Check EDID” command will compare the current EDID from the monitor with the EDID it has programmed inside, this is to ensure the correct audio and High definition display signals are being sent through the device properly.

TECHNICAL SPECIFICATIONS

VIDEO	
Video Amplifier Bandwidth	1.65 Gbps
Input Video Signal	1.2 volts
Input DDC Signal	5 volts
Single Link Range	1080p
HDMI Connector	HDMI Type A 19 pin female

CONTROL	
Front Panel	2 Tactile Switches
RS-232	Female DB9 @ 9600bps
IR	3.5mm connector with 38khz

OTHER	
Power	5V DC
Dimensions	9.1” W x 1.75” H x 2.5” D
Weight	2.5 lbs.



205 Westwood Ave, Long Branch, NJ 07740
 Phone: 866-94 BOARDS (26273) / (732)-222-1511
 Fax: (732)-222-7088 | E-mail: sales@touchboards.com



Designed and Manufactured in the USA

800.AVI.2131

Tel: (818) 503-6200 Fax: (818) 503-6208
 11651 Vanowen St. North Hollywood, CA 91605

SmartAVI.com

Smart-AVI
 SMART AUDIO VIDEO INNOVATION

HDNET-4P

FOUR PORT HDMI AUTOMATIC SWITCH



Automatically Switch Between up to
 Four HDMI Devices on One
 HDMI Display

USER MANUAL

INTRODUCTION

With SmartAVI's HDNET-4P it is now possible to connect up to four HDMI devices to one display screen for easy switching between sources. Transmit high definition sources such as BluRay players, gaming consoles, computers or cable receivers effortlessly while viewing on a single HDTV monitor.

The HDNet-4P offers an automatic switching mode, and when configured as an automatic switcher, it has the ability to switch to a selectable secondary input upon powering off of the primary input. HDNet-4P will automatically switch to the next device when the higher input is powered off. This allows the user to control multiple devices with the HDNet-4P.

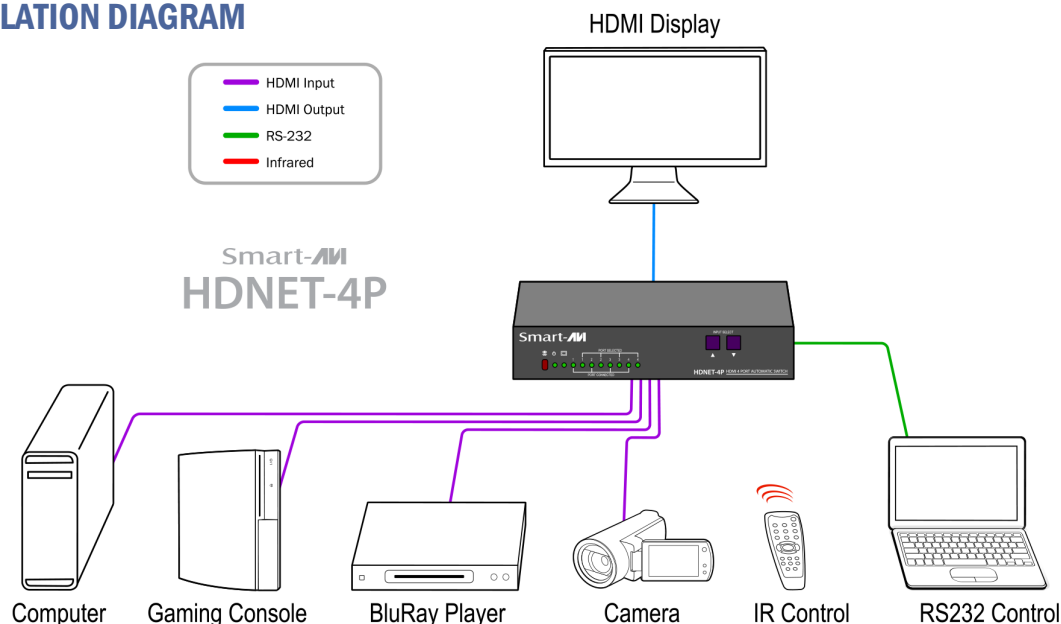
FEATURES

- RS232 switching control
- IR switching control
- Front panel switching control
- EDID learning of any monitor
- Maintains 480p, 720p, 1080i and 1080p video formats
- Supports HDMI 1.3 digital audio format, LPCM/ Dolby-AC3/
- DTS7.1/DSD
- ATC & HDCP compliant
- Connect four HDMI components to one HDTV monitor
- Supports DVI-D

WHAT'S IN THE BOX

PART NO.	QTY	DESCRIPTION
HDNET-4PS	1	HDMI 4x1 Automatic Switch
Power Supply	1	PS5VDC-2A
User Manual	1	

INSTALLATION DIAGRAM



CONNECTING THE HDNET-4P

1. Ensure that power is disconnected from HDNET-4Pro.
2. Connect up to four HDMI cables from the source devices to the respective HDMI IN ports on the HDNET-4P.
3. Optionally connect RS-232 for control functions.
4. Connect the display monitor to the HDMI OUT on the HDNET-4P.
5. Power on the HDNET-4P.

AUTOMATIC MODE

1. Locate the Phoenix Connector at the rear of the unit.
2. Plug in the Phoenix Connector jumper.
3. When the device is in automatic mode and at least one input is plugged in, the monitor LED will blink.



**Note: The pushbuttons will be disabled in Automatic Mode. EDID programming is also disabled in this mode.*

LEARNING EDID

1. Unplug all of the inputs to the HDNet4P, make sure the HDNet4P is in manual mode (Not automatic mode, so remove the phoenix connector jumper.)
2. Plug the display monitor that you will be using into the HDNet4P
3. Turn on the HDNet4P
4. Turn on the display monitor
5. After a moment simply press and hold both buttons on the front control panel for about a second and then let go.
6. Notice the lights on the front control panel will begin flashing for about 10 seconds (if this isn't the case then try again.)