



Quality Products. Service Excellence.

Knockdown Steel 4-Post Rack *DC4R Series*

2,000 lbs|907 kg Weight Capacity



The Hammond DC4R Open Rack series is one of the most economical solutions to house IT equipment in wiring closets or data centers. In situations where the wiring closet itself is under lock and key and accessed by a limited number of people, full cabinets having locking doors and side panels may not be required resulting in a significant cost savings.

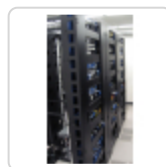
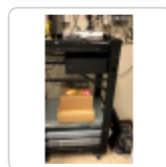
Standard Features

- Available in 24U and 44U
- Two (2) pairs of 19" mounting EIA-310-D compliant square-hole rails.
 - Ships with a 50-pack of screws and cage nuts **CAGKIT1032-50**.
 - Includes marked rack unit dividers to aid in equipment mounting.
- For 44U height, add optional **DC4RPR44** pair of rails for additional adjustable mounting depths.
- Optional solid side panels gives you the look, feel and security of a welded cabinet.
- Four (4) pairs of integrated 10-32 ground studs, at both the front and rear of the rack. Stud pairs are conveniently spaced 5/8" apart and located across from each other inside the rail channel. For added convenience, two (2) pairs are located near the top of the rack, while the others are near the bottom of the rack.
- Rail depth L-bracket restrict the installer from over-extending the rack. This ensures the integrity of the rack.
- Self-squaring design for a short assembly time.
- One (1) set of two (2) horizontal cable manager bars. Additional cable manager bars available by ordering part number **DC4RSHCM**.
- Finished in smooth black powder paint.
- Knockdown design ships unassembled for easy handling and shipping protection.

Specifications

- Constructed of 12-gauge steel.
- Suggested static load capacity of 2,000 lbs (907 kg).
- TAA compliant for GSA Schedule purchases.
- RoHS and REACH Compliant.
- Manufactured in North America.

Gallery



Accessories

- High-Density Vertical Finger Manager with Slam-Latching Door
- Vertical Rack Cable Manager with Door
- Adjustable Depth Shelf
- Vertical Finger Cable Manager with Door
- Rackmount Adjustable Angle Bracket
- Universal Rack Shelf

11/29/2019

Knockdown Steel 4-Post Rack (DC4R Series) - Hammond Mfg.

• Top Wire Management

• Top Cable Chimney

• Adjustable Depth Cable Manager

• Horizontal Hinged Cable Manager

• Outlet Strips

• Grounding

• Rack Isolation Kit

• Bolt Down Kit

• Two Post Centered Shelf

• Rack Panels

• Horizontal Ring Cable Manager

• Mounting Screw and Cage Nut Combo-Pack

• Horizontal Finger Cable Manager

• Open Frame Rack Caster Kit

• Rack and Cabinet Baying/Ganging/Joining Kit

Adjustable Depth

Part No.	Overall Dimensions		Rack Units	Mounting Dimensions				Optional Accessories	
	Height	Width		Height	Width	Min Depth	Max Depth	Solid Side Panel (single)	Extra Pair of Rails
DC4R24	48.12	20.50	24U	42.00	19.00	24.00	36.00	DC4R2436SP	-
DC4R44	83.13	20.50	44U	77.00	19.00	24.00	36.00	DC4R4436SP	DC4RPR44
DC4R4448	83.13	20.50	44U	77.00	19.00	32.00	48.00	DC4R4448SP	DC4RPR44

The base feet extending outwards add approx. 12 inches of overall depth.

Fixed Depth

Part No.	Overall Dimensions			Rack Units	Mounting Dimensions			Optional Solid Side Panel (single)
	Height	Width	Depth		Height	Width	Depth	
DC4R4429F	83.13	20.50	29.00	44U	77.00	19.00	29.00	DC4R4436SP
DC4R4436F	83.13	20.50	36.00	44U	77.00	19.00	36.00	DC4R4436SP
DC4R4442F	83.13	20.50	42.00	44U	77.00	19.00	42.00	DC4R4448SP

DC4R Specific Accessories

Part No.	Description
DC4RSHCM	Additional Horizontal Cable Bars (2)
DC4RPR44	Additional pair of rails for DC4R 44U
RRLDCASTER	800 lbs capacity locking casters

Tags: Relay Rack, H-Frame, Server Rack, Equipment Rack, Network Rack, Skeleton Rack, Telco Rack, Two-Post Rack, Data subject to change without notice
knock-down, knock down

© 2019. Hammond Manufacturing Ltd. All rights reserved.

<https://www.hamfmg.com/dci/products/open-frame/dc4r>

2/2