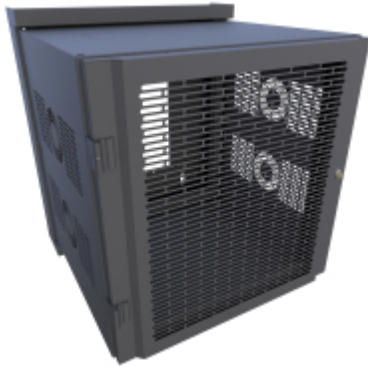




Quality Products. Service Excellence.

Swing-Out Sectional Wall Mount Rack Cabinet *HWM Series*

UL Rated 350 lbs|159 kg Weight Capacity



Application

The Hammond Wall Mount (HWM) cabinet was designed with the technical professional in mind. Our modern design enables the cabinet to be installed in less time using fewer installers than similar cabinets of its size. Fabricated from heavy duty steel, the HWM is available in up to 32U and 31.7" overall depth and can support up to 350 lbs of equipment. The HWM is guaranteed not to drop down when the center section is opened. Similar products from other suppliers can drop down when the center section is opened that can cause costly equipment failures due to damage to storage devices. The HWM design prevents the center section from dropping saving you time and money from equipment replacement.

The vented front door and side panels were specifically designed for high capacity servers, switches and power management devices. Optional locking solid doors are available for all sizes



All 16.70" inch depth versions are priced to clear, available while supplies last.

Features

- Available in three (3) depths and four (4) heights.
- All sizes include either vented 63% perforated front door or smoked window front door.
- Center section features:
 - Heavy duty spring-hinge pin for easy installation and removal.
 - Side panel that includes two (2) vents and fan grill.
- Rear section features:
 - The side of the rear section includes 2.50" and 2.00" knockouts.
 - The top and bottom of the rear section includes 3.00", 2.00", 1.38" and 1.12" knockouts.
 - Generous cable management lances located on the rear section as well as on mounting rails.
 - Mounting points for Outlet Strip.
 - Heavy duty keyhole for wall mounting.
 - Large opening in rear for cable access.
- Front locking door and center section keyed the same (optional key available).

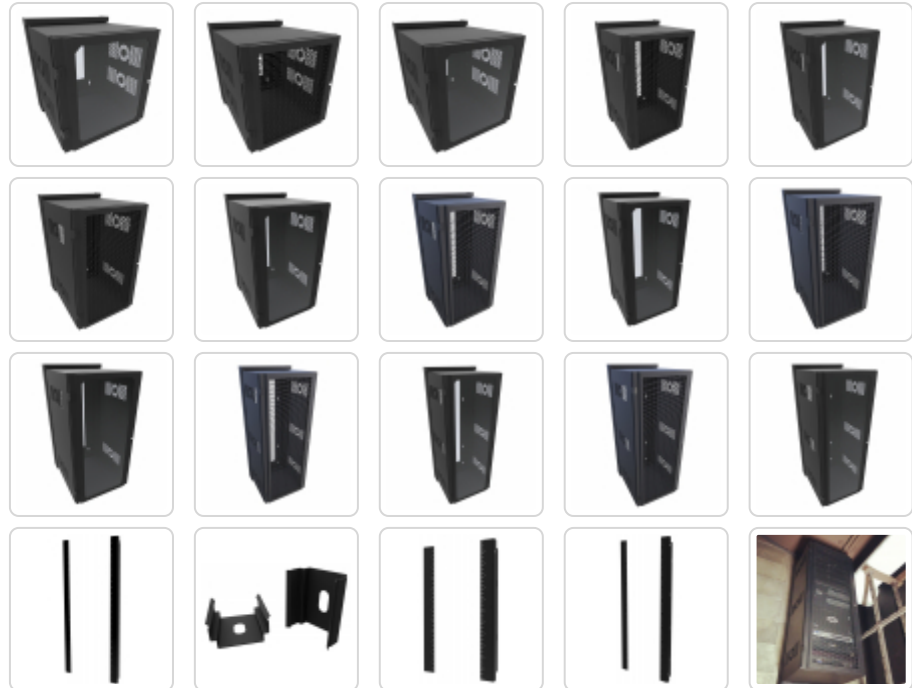
Specifications

- 14-gauge welded rear section; 16-gauge center section and doors.
- EIA compliant adjustable depth mounting rails.
- Includes one (1) pair of tapped (10-32) mounting rails.
 - Supports multiple pairs of rails in both tapped and square hole options.
- Grounding lugs located on top and bottom of the door, center and rear sections.
- UL Listed 2416 for up to 350 lbs (159 kg) static load rating.
- Rugged sand-textured black powder paint (reduced fingerprints and marks).
- TAA Compliant.
- RoHS Compliant.
- Manufactured in North America.

When you just need the basics, you may also consider the RB-SW Wall Cabinet Series.

Looking for a Wall Cabinet with vertical cable management? See the HWC Series.

Gallery



Accessories

- Universal Rack Shelf
- Rack Unit Label
- Horizontal Hinged Cable Manager
- Vertical Cable Tray
- Rack Panels
- Grounding
- Fan Kits
- Two Post Mounting Clamping Shelf
- Horizontal Lacing Strip
- Horizontal Steel Finger Cable Manager
- Outlet Strips
- Mounting Hardware
- Magnet Panel Cover

Part No. Vented Door	Part No. Window Door	Overall Dimensions			Rack Units	Mounting (Usable) Dimensions		
		Height	Width	Depth		Height	Width	Depth
HWM2412U20BK	HWM2412U20WDBK	27.75	24.68	25.70	12U	21.00	19.00	23.52
HWM2412U26BK	HWM2412U26WDBK	27.75	24.68	31.70	12U	21.00	19.00	29.52
HWM2420U11BK	-	41.75	24.68	16.70	20U	35.00	19.00	14.52
HWM2420U20BK	HWM2420U20WDBK	41.75	24.68	25.70	20U	35.00	19.00	23.52
HWM2420U26BK	HWM2420U26WDBK	41.75	24.68	31.70	20U	35.00	19.00	29.52
HWM2424U11BK	HWM2424U11WDBK	48.75	24.68	16.70	24U	42.00	19.00	14.52
HWM2424U20BK	HWM2424U20WDBK	48.75	24.68	25.70	24U	42.00	19.00	23.52
HWM2424U26BK	HWM2424U26WDBK	48.75	24.68	31.70	24U	42.00	19.00	29.52
HWM2432U11BK	-	62.75	24.68	16.70	32U	56.00	19.00	14.52
HWM2432U20BK	HWM2432U20WDBK	62.75	24.68	25.70	32U	56.00	19.00	23.52
HWM2432U26BK	HWM2432U26WDBK	62.75	24.68	31.70	32U	56.00	19.00	29.52

Accessories

Cabinet Rack Units	Locking Solid Door	Tapped 10-32 Rail (Pair)	Square Hole Rail (Pair)	Vertical Cable Manager
12U	HWMSD2412UBK	HWMTR12U	HWMSR12U	-
20U	HWMSD2420UBK	HWMTR20U	HWMSR20U	-
24U	HWMSD2424UBK	HWMTR24U	HWMSR24U	VCT42
32U	HWMSD2432UBK	HWMTR32U	HWMSR32U	VCT56

Lock Keyed Differently

Part No.	HWMSLOCK
----------	----------

Tags: Sectional Wall Mount Rack, Pivoting Rack, Data Wall Cabinet, Dual Hinge, Hinged Swing Gate

Data subject to change without notice