



Quality Products. Service Excellence.

Adjustable Depth Center Swing Wall Rack *HWMR Series*

Heavy Duty 220 lbs|100 kg Weight Capacity



The Hammond Wall Mount Rack (HWMR) series was designed to easily mount network equipment in IT environments with limited floor space. Unlike similar racks, Hammond has integrated both depth adjustment and center swing capabilities in one rugged open rack system. Available in 12U, 20U, 24U and 32U rack unit options the HWMR can easily adjust in depth from eighteen to twenty-four inches to accommodate a wide range of equipment sizes.

Features

- Constructed of heavy duty 12 gauge steel (braces and rack rail); 16 gauge steel (other body components).
- EIA-310-D compliant 10-32 tapped rails with 19" mounting and rack unit indicators.
- Rack frame swings on center providing convenient equipment access without exceeding the rack footprint.
- Adjustable variable depth from 18" to 24" using slots for easy set-up and adjusting.
- Variable usable depth from 15.1" to 21.1"
 - Top and Bottom rack units have a usable depth from 12.4" to 18.4".
- Three (3) spring pin positions allow for simplified equipment maintenance.
- Side and rear cable access with multiple tie points for cable management.
- Finished in smooth black powder paint.
- Knockdown design ships unassembled for easy handling and shipping protection.
- Tested to nearly double the suggested load rating of 220 lbs (100 kg).
- TAA Compliant.
- RoHS Compliant.
- Manufactured in North America.

Included in the Box

- HWMR Components and assembly hardware.
- Assembly Bulletin.
- Wall mounting template for easy 16 inch center installation. (Wall mounting hardware not included)
- Fifty (50) pack of 10-32 screws.

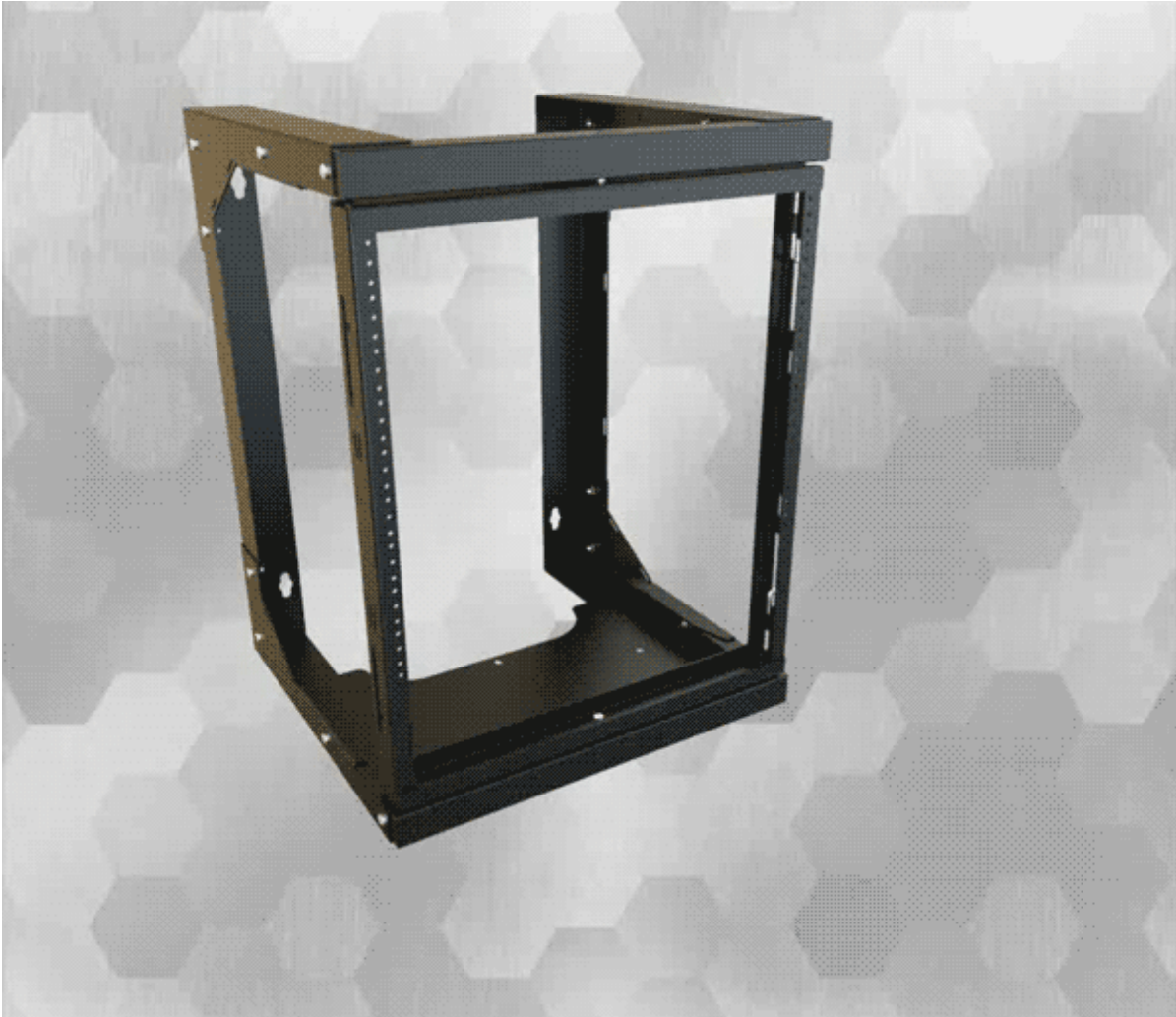
You might also like our RB-2PW Fixed Wall Rack.

Gallery



Accessories

- Vertical Cable Tie Down Bracket
- Universal Rack Shelf
- Two Post Mounting Adjustable Shelf
- Adjustable Rack Mount DIN Rail Kit
- Outlet Strips
- Cable Management
- Rack Unit Label
- Rail Mounting Cable Ring
- Two Post Mounting Clamping Shelf
- Two Post Mounting Keyboard & Equipment Shelf
- Hinged Clear Security Cover
- Rack Panels
- Mounting Screw and Cage Nut Combo-Pack



Part No.	Overall Dimensions				Rack Units	Mounting (Usable Center Swing) Dimensions			
	Height	Width	Min Depth	Max Depth		Height	Width	Min Depth	Max Depth
HWMR1912UBK	26.50	20.00	18.00	24.00	12U	21.00	19.00	15.10	21.10
HWMR1920UBK	40.50	20.00	18.00	24.00	20U	35.00	19.00	15.10	21.10
HWMR1924UBK	47.50	20.00	18.00	24.00	24U	42.00	19.00	15.10	21.10
HWMR1932UBK	61.50	20.00	18.00	24.00	32U	56.00	19.00	15.10	21.10

Includes a fifty (50) pack of 10-32 screws and cage nuts.

Tags: Swivel Rack, Swing Gate Rack, Hinged Rack, 2-Post Wall-Mount, Swinging 2-Post, Rotating Equipment Mounting Data subject to change without notice
Frame, Swing Frame, Hinged Swing Gate, knock-down, knock down

© 2019. Hammond Manufacturing Ltd. All rights reserved.

