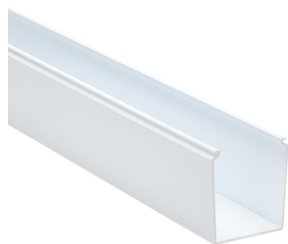


## Specification Sheet

Part Number: 181-00227



Solid wall construction provides excellent coverage to keep wires clean.

Durable material protects wires from damage, with long-lasting performance.

Standard colors complement or contrast light and dark environments.

Nonpermanent adhesive allows repositioning prior to final installation.

Optional covers snap on and off easily, and their nonslip lining ensures they stay in place even under vibration.

Solid Wall Wiring Duct, 2.5 x 3", 6 ft Sticks, Adhesive, PVC, White, 30 ft/box, 120ft/ctn

Article Number 181-00227

Type SDA2.5X3

Color White (WH)

Quantity Per pack

Product Description HellermannTyton Solid Wall Wiring Duct efficiently routes and protects wire. Solid wall wiring duct is designed for straight wire runs where breakouts are not required. Solid wall wiring duct is manufactured from high-impact, rigid PVC; comes in standard colors of white, gray and black; and is available in 6-foot lengths.

Short Description	Solid Wall Wiring Duct, 2.5 x 3", 6 ft Sticks, Adhesive, PVC, White, 30 ft/box, 120ft/ctn
Global Part Name	SDA2.5X3-PVC-WH
Length L (Imperial)	6.0
Length L (Metric)	1.83
Width W (Imperial)	2.5
Width W (Metric)	63.5
Height H (Imperial)	3.07
Height H (Metric)	77.9
Mounting Hole Centers (Imperial)	4.0
Material	Polyvinylchloride (PVC)
Material Shortcut	PVC
Flammability	UL 94 V-0
Halogen Free	No
UV Resistant (Yes/No)	No

Use Conditions	For Indoor Use Only
Operating Temperature	+122°F (+50°C)
BABA Compliant	YES
Reach Compliant (Article 33)	No
ROHS Compliant	Yes
Certification/Specification	UL EN 50085-1:2005 + A1:2013 CSA EN 50085-2-3_1A
UL Recognized (US)	Yes
Package Quantity (Imperial)	30.0
Package Quantity (Metric)	9.14
Customs Number	3925900000

7930 N. Faulkner Road, Milwaukee, WI 53224

Phone: (800) 537-1512 | Email: [corp@htamericas.com](mailto:corp@htamericas.com)

© 2026 HellermannTyton. All Rights Reserved.

[Contact Us](#) [RoHS/WEEE Compliance](#) [Privacy Policy](#) [Cookie Policy](#) [Terms and Conditions](#)