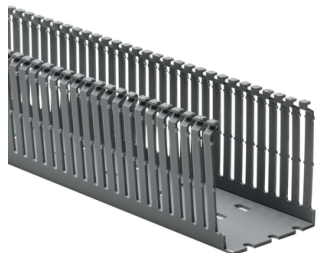


Specification Sheet

Part Number: 181-00231



Narrow fingers reduce fanning of the wires to the terminal blocks, presenting a neater appearance.

Each finger is provided with a double restriction to hold wires in the bottom portion of the duct, allowing for easier installation.

Mounting holes are uniform in size to the solid and slotted wall duct, but are offered every 2 inches to accommodate compact designs and ease installation.

High-Density Slotted Wall Wiring Duct, 2.5 x 3", 6 ft Sticks, Adhesive, PVC, Gray, 120ft/ctn

Article Number	181-00231
Type	SLHDA2.5X3
Color	Gray (GY)
Quantity Per	pack
Product Description	Pro-Duct high density, slotted wall, wiring duct features narrow fingers, equaling a 2 to 1 finger ratio compared to standard slotted wiring duct. With the narrow fingers, compact designs and components are more easily accommodated.
Short Description	High-Density Slotted Wall Wiring Duct, 2.5 x 3", 6 ft Sticks, Adhesive, PVC, Gray, 120ft/ctn

Global Part Name SLHDA2.5X3-PVC-GY

Length L (Imperial) 6.0

Length L (Metric) 1.83

Width W (Imperial) 2.5

Width W (Metric) 63.5

Height H (Imperial) 3.07

Height H (Metric) 77.9

Mounting Hole Centers (Imperial) 2.0

Material Polyvinylchloride (PVC)

Material Shortcut PVC

Flammability UL 94 V-0

Halogen Free No

UV Resistant (Yes/No) No

Use Conditions For Indoor Use Only

Operating Temperature +122°F (+50°C)

Reach Compliant (Article 33)	No
ROHS Compliant	Yes
Certification/Specification	EN 50085-2-3_1A EN 50085-1:2005 + A1:2013 CSA UL
UL Recognized (US)	Yes
Package Quantity (Imperial)	30.0
Package Quantity (Metric)	9.14
Customs Number	3925900000

7930 N. Faulkner Road, Milwaukee, WI 53224

Phone: (800) 537-1512 | Email: corp@htamericas.com

© 2026 HellermannTyton. All Rights Reserved.

[Contact Us](#) [RoHS/WEEE Compliance](#) [Privacy Policy](#) [Cookie Policy](#) [Terms and Conditions](#)