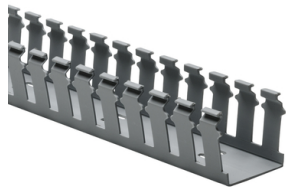


Specification Sheet

Part Number: 181-22032



Strong fingers prevent unwanted breaking.

Restricted opening prevents unintended removal of wires and permits any individual wire to be traced without disconnection.

Supplied with mounting holes to streamline installation.

Optional covers enhance protection and appearance.

Slotted Wall Wiring Duct, 2 x 2", 6 ft Sections, Adhesive, PVC, Gray, 120ft /ctn

Article Number 181-22032

Type SLA2X2

Color Gray (GY)

Quantity Per carton

Product Description HellermannTyton Slotted Wall Duct features breakaway fingers that provide additional access for wire leads. Each section of the duct is provided with two score lines. The upper score line is used to break away fingers when a wider opening is required. The lower score line allows the sidewall to be smoothly cut for joints and Ts. Pressure-sensitive, rubber-based adhesive backing aids in temporary positioning.

Short Description Slotted Wall Wiring Duct, 2 x 2", 6 ft Sections, Adhesive, PVC, Gray, 120ft /ctn

Global Part Name	SLA2X2-PVC-GY
Length L (Imperial)	6.0
Length L (Metric)	1.83
Fixation Method	Adhesive
Width W (Imperial)	2.0
Width W (Metric)	50.8
Height H (Imperial)	2.07
Height H (Metric)	52.6
Mounting Hole Centers (Imperial)	4.0
Material	Polyvinylchloride (PVC)
Material Shortcut	PVC
Flammability	UL 94 V-0
Halogen Free	No
UV Resistant (Yes/No)	No
Use Conditions	For Indoor Use Only

Operating Temperature	+122°F (+50°C)
Reach Compliant (Article 33)	No
ROHS Compliant	Yes
Certification/Specification	UL EN 50085-2-3_1A CSA EN 50085-1:2005 + A1:2013
UL Recognized (US)	Yes
Package Quantity (Imperial)	120.0
Package Quantity (Metric)	36.6
Customs Number	3925900000

7930 N. Faulkner Road, Milwaukee, WI 53224

Phone: (800) 537-1512 | Email: corp@htamericas.com

© 2026 HellermannTyton. All Rights Reserved.

[Contact Us](#) [RoHS/WEEE Compliance](#) [Privacy Policy](#) [Cookie Policy](#) [Terms and Conditions](#)