



## MULTIPLE IMAGE ANNOTATIONS

Except for text and voice recordings and annotations, featuring **GPS and compass functions** to automatically add location and direction information to the image, helping to improve inspection efficiency and productivity.



## SPECIFICATIONS

		SP60
<b>Thermal Module</b>	IR Resolution	640 x 480 (307, 200 pixels)
	NETD	< 0.03°C (30 mK) at 25°C (77°F) Ambient temperature, F# = 1.0
	Focal Length	L8: 77.4 mm, L12: 51.4 mm, L25: 25.0 mm, L50: 12.6 mm
	FOV (Field of View)	L8: 8.0° H × 6.0° V, L12: 12.0° H × 9.0° V, L25: 24.8° H × 18.7° V, L50: 50.0° H × 37.3° V
	Image Frequency	25 Hz
<b>Optical Module</b>	Focus	Continuous Autofocus/Autofocus/Manual Focus/Laser Assisted Focus
	IFOV (Spatial Resolution)	L8: 0.22 mrad, L12: 0.33 mrad, L25: 0.68 mrad, L50: 1.35 mrad
	Picture Resolution	Configurable: 2 MP, 5 MP, 8 MP
<b>Image Display</b>	Display	1280 × 720 Resolution, 5" LCD Touch Screen
	Color Palettes	7: White Hot, Black Hot, Rainbow, Ironbow, Red Hot, Fusion, Rain
	Image Modes	4: Thermal/Optical/Fusion/PIP
<b>Measurement and Analysis</b>	Object Temperature Range	-20 °C to 650 °C (-4 °F to 1202 °F)
	Accuracy	Max (±2°C/3.6°F, ±2%)
	Measurement Presets	Center Spot, Hot Spot, Cold Spot, Point Presets, 10 User Preset Points, 1 User Preset Line, 3 User Presets Areas, Off
	High Temperature Alarm	Audible Warning
	Color Alarm (Isotherm)	Above/Below/Interval/Insulation
<b>Storage</b>	Storage Media	Default Storage: Removable SD Card (64 GB), Max. Storage Capacity: 128 GB
	Image Storage Capacity	Approx. 60,000 Images (The size of a single image is about 900kb~1.3Mb)
	Image File Format	Radiometric image with Measurement Data Included, JPEG Image without Measurement Data Included
	Video Storage Capacity	Approx. 64 Hours (The size of a 1-minute video is about 15~20Mb)
	Video File Format	Standard MP4 Non-radiometric video
<b>Functions</b>	Laser Pointer	Yes
	Laser Distance Meter	Yes
	LED Light	Yes
	Wi-Fi	802.11 b/g/n (2.4 GHz)
	Level/Span	Auto/Manual/1-Tap Level & Span
	Bluetooth	Bluetooth 4.2
	Interface	USB Type-C, HDMI-D, 64 GB SD card
	Geolocation	Location data automatically added to every image from the built-in GPS, BDS, GLONASS or GALILEO
	Compass	Camera direction automatically added to every image
	Carrying Case	Yes
<b>Power System</b>	Battery Operating Time	4 Hours Continuous Running per battery (actual life varies depending on settings and usage)
	Menu Language	21 Languages
<b>General</b>	Protection Level	IP54
	Drop Test Height	2 m (6.56 ft)
	Weight	Approx. 1590 g (3.51 lb)

\*Please note that all features, functionality, and other product specifications are subject to change without notice. For the most up-to-date information, go to [www.hikmicrotech.com](http://www.hikmicrotech.com)



# SP SERIES

HIGH-PERFORMANCE THERMAL IMAGING CAMERA WITH VIEWFINDER, ARTICULATING LENS AND SCREEN



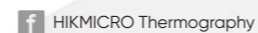
## HIKMICRO ANALYZER SOFTWARE

Included software offers flexible ways (points, lines, rectangles, circles, polygons) to analyze the information of captured images for generating reports.

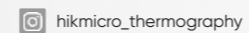


## FAST COMMUNICATION

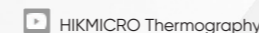
Connect (via Wi-Fi or Hotspot) to the HIKMICRO Viewer App for transmitting pictures from the camera to a mobile phone. Analyze, share images and generate reports in real-time, on-site.



HIKMICRO Thermography



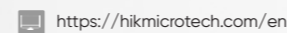
hikmicro\_thermography



HIKMICRO Thermography



info@hikmicrotech.com



<https://hikmicrotech.com/en>



HIKMICRO

## ULTRA-HIGH PERFORMANCE AND MAXIMUM FLEXIBILITY TOOLS FOR EXPERTS

HIKMICRO SP60 high-performance thermal camera is the best price-performance ratio in the premium class on the market. With its ultra-high thermal resolution, high-temperature accuracy, and crisp image clarity, the SP60 is ideal for industrial, oil and gas, and predictive and utility maintenance inspections.



### EMBEDDED LASER DISTANCE METER

Integrated laser distance meter provide accurate distance from long distance, more convenient in setting parameter and generate report.



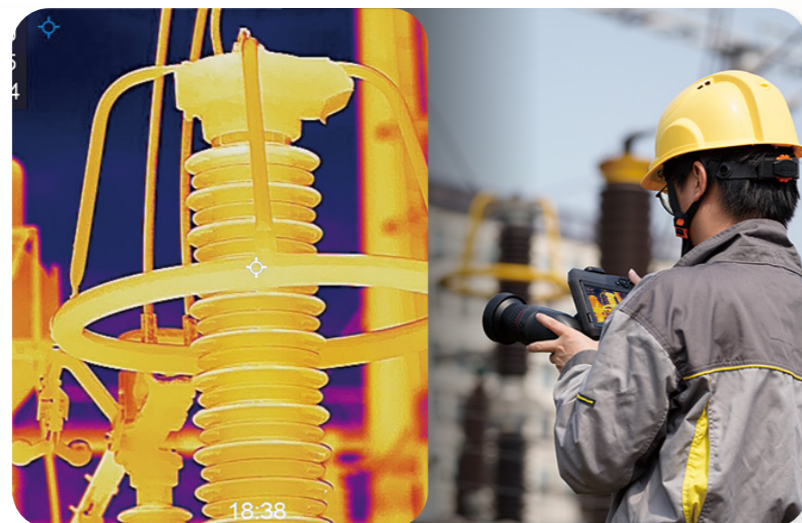
### MINIMIZE SUN GLARE

The 1024 x 768 OLED electronic viewfinder and auto-brightness 5" color LCD touch display make it easy to conduct outdoor inspections under bright, challenging light conditions.



### ULTRA HIGH RESOLUTION

A highly sensitive HIKMICRO VOx detector (NETD < 30 mK) with 640 x 480 (307,200 pixels) IR resolution, provides a distinct thermal image of the target.



### FLEXIBLE ROTATING LENS AND SCREEN

The 90° rotating screen with automatic orientation and the 180° rotating lens design help to easily view the area around, between, above, or below the target.

180°

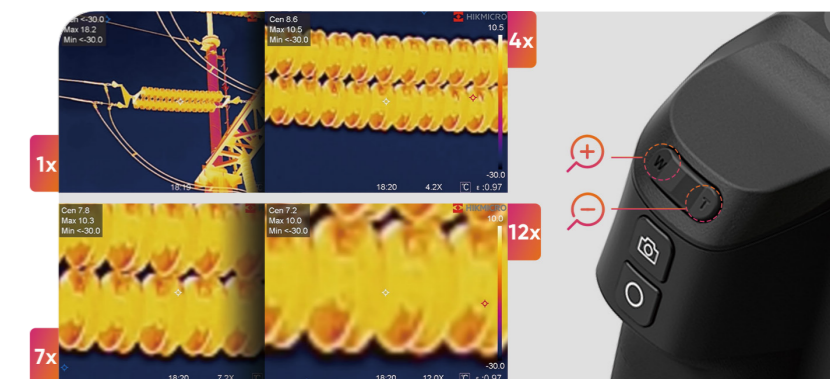


90°



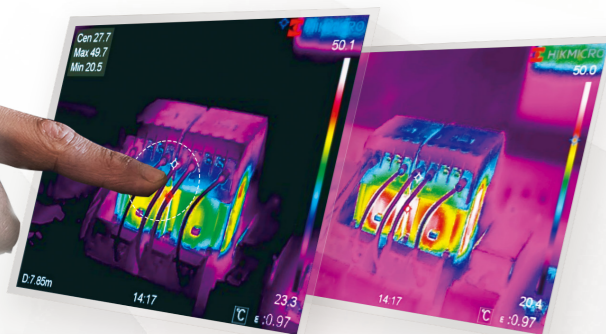
### CONTINUOUS DIGITAL ZOOM

The 90° rotating screen with automatic orientation and the 180° rotating lens design help to easily view the area around, between, above, or below the target.



### MULTIPLE LEVEL & SPAN MODE

Supports 3-level/span modes (manual, automatic, and 1-Tap) helping to instantly improve image contrast and highlight potential problems.



### ONE-SECOND FAST FOCUSING



Supports 4 types of focus mode (manual focus, continuous autofocus, autofocus, and laser-assisted focus) and one-second fast focusing speed helps to save time by giving sharper images, resulting in more accurate temperature measurements.



### EXTENSIVE RANGE OF INTERCHANGEABLE LENSES

Interchangeable Lens L8, L12, L25, and L50 are available. Different lenses give different Fields Of View, giving you more options in different scenarios.