



SP40/40H

Professional Thermography Camera for Commercial, Industrial, and Manufacturing Facilities

480x360 IR Resolution
(172,800 pixels), 30Mk sensitivity & 8mp visual camera

Temperature Range
SP40 -20 °C to 650 °C or
SP40H -40°C to 2200°C

6 Interchangeable Lens Options
for any application

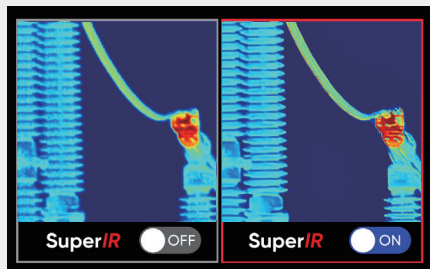
Fully Featured
Onboard image analysis, alarms, LED work light, Wi-Fi, voice/text annotations



VISIT OUR WEBSITE

SuperIR

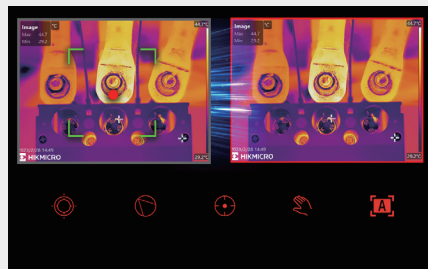
Powered by HIKMICRO SuperIR image enhancement technology, it upscales thermal images from 480 x 360 (172,800 pixels) to **960 x 720 (691,200 pixels)** resolution.



Substation image from 50m with 2X lens. Image cropped in to show detail.

One-second fast focusing

Support for **5 focus modes** (Laser-Assisted AF, Continuous AF, AF, Manual Focus, Touch AF) with a fast focus speed of **1 second** to match your workflow, optimize image clarity, and ensure measurement accuracy.

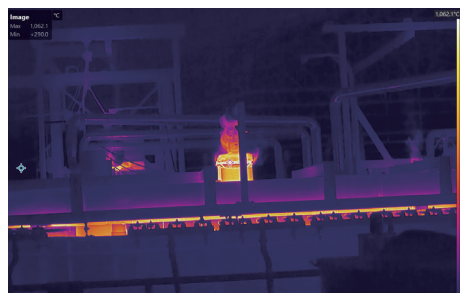


Flexible Rotating Lens and 5" 1280x720 LCD Touchscreen

The 90° rotating screen and 180° rotating lens makes it easy to view the area around, between, above, or below the target.



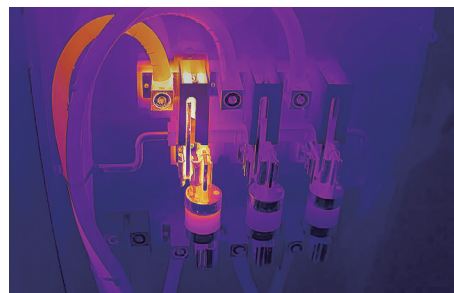
APPLICATIONS



High Temperature



Industrial & Manufacturing



Electrical

WHAT'S IN THE BOX

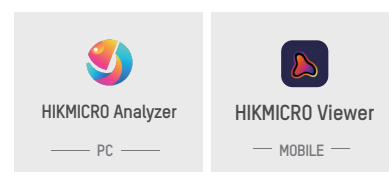


LENS OPTIONS



Model No		SP40	SP40H
Infrared Image	IR Resolution	480 x 360	480 x 360
	SuperIR	960 x 720	960 x 720
	NETD	< 30 mK (@ 25 °C, F#=1.0)	
	Image Frequency	25 Hz	
	Available Lenses: Field of View/ Spatial Resolution	L6: 6° x 4.5° (0.22mrad); L9: 9° x 6.8° (0.33mrad); L19: 18.7° x 14° (0.68mrad); L37: 37.3° x 27.8° (1.35mrad) 20µm macro, 50µm macro	
Image Display	Visual Camera	3264 x 2448 (8 MP)	
Measurement and Analysis	Object Temperature Range	-20 °C to 650 °C (-4 °F to 1202 °F)	-40°C to 2200°C (-4°F to 3992°F)
	Accuracy	±2°C/3.6°F	±1°C (±1.8°F): 0 to 100°C (32 to 212°F); ±1%: 100 to 150°C (212 to 302°F); ±2°C (±3.6°F): -40 to 0°C (-40 to 32°F); ±2%: 150 to 2200°C (302 to 3992°F)
General	Image and Video Formats	JPEG, MP4, Radiometric Video	
	Wi-Fi	802.11 b/g/n (2.4 GHz and 5 GHz)	
	Memory	64GB SD- Up to 60,000 images or 64 hours video	
	HDMI Interface	Yes	
	GPS & Compass	Yes	
	Batteries	Approx. 4 hours, Includes 2 batteries for 8 hours of field use (4 hours/battery)	

SOFTWARE



- HIKMICRO Thermography
- infoNAM@hikmicrotech.com
- hikmicro_thermography
- HIKMICRO Thermography
- HIKMICRO

