

BEND TUBES WITH ONE HAND.

Reverse Bending Instructions:

1. Remove the bender body from the case and release the handle using the slide lock located on the left side of the tool.
2. Ensure that the ratchet bar is in the start position by pressing the release trigger located under the body but above the lower handle when released.
3. Remove reverse bending attachment from the case and attach the mandrel attachment (Figure A) onto the body of the tool ensuring it is secured by the ball detent.
4. Locate the correct size bending mandrel and slide the square hole onto the mandrel attachment with the size facing upward.
5. Attach the crossbar attachment (Figure B) to the ratchet bar securing with the ball detent.
6. Remove the compact bar from the case and locate the size of tubing you want to bend. Then, with the correct size facing downward, snap the bar onto the crossbar attachment.
7. Using the color coding on the mandrel, rotate the bending shoes on the compact bar until the color that faces the mandrel matches the color on the mandrel.
8. Place the tube between the mandrel and the compact bar and squeeze the lower handle to advance the ratchet bar and mandrel forward to bend the tube to the desired angle (Figure C).
9. When the desired bend angle (up to 90°) has been achieved, release the lower handle and press the release trigger located under the body to retract the mandrel and ratchet bar to the start position.
10. When working with larger diameter tubing, once the bend is complete make a half squeeze on the handle and then press the release button.
11. Remove the bent tube and show off the perfect bend.



Figure A
Mandrel Attachment



Figure B
Crossbar Attachment

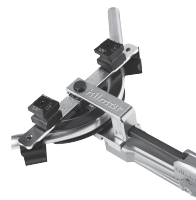


Figure C
Product Set-up

hilmar[®]

+ 1-800-995-2222