

Eliminate the problems of using multi-channel loggers

WIRELESS LOGGING STATION LR410-20



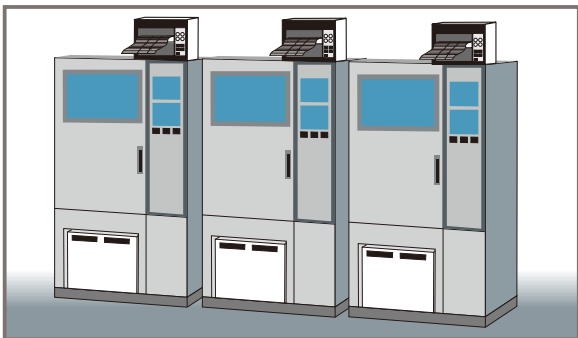
Wireless data transmission !

- Download data using Bluetooth® wireless technology
- Install logging modules in hard-to-reach locations (over line-of-sight distances of up to 30 meters *)
 *The presence of obstructions may shorten this range
- Logging station controls up to seven logging modules, allowing you to collect 105 channels of data
- 100 msec simultaneous sampling across all channels (rapid scanning method)
- Two types of logging modules measure voltage, temperature, resistance, and humidity
- Quick Set guide makes configuration a breeze

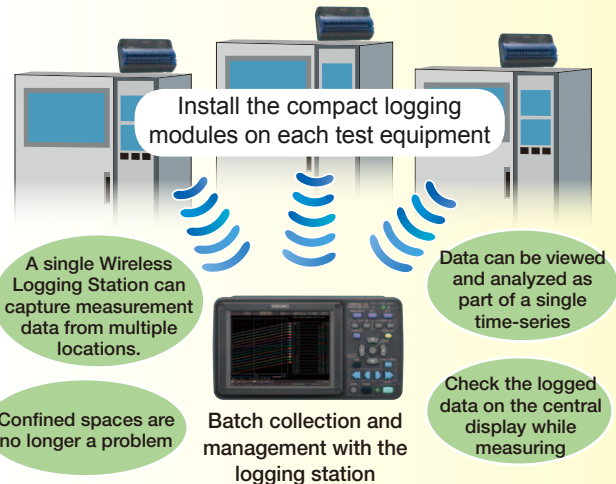
1 Synchronize measurement data

View test data from multiple points for a synchronized comparison

Before ▶▶▶▶▶▶▶▶▶▶ **After**



Traditionally, data loggers are installed on each device



Issue 1 Installing individual loggers on test equipment means each set of measured data is on its own time line, making it hard to compare the data with respect to a single time axis.

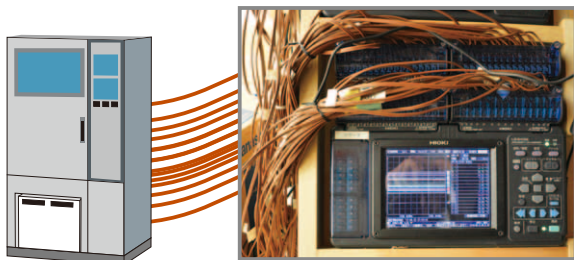
Issue 2 Conventional data loggers are sometimes too bulky and difficult to fit into test equipment.

Solution You can observe measurement results from multiple pieces of experimental equipment as part of the same time series.
 Logging modules are small enough to fit almost anywhere.

2 Cumbersome thermo couple wiring

Avoid issues by using wireless connection

Before             After



Issue Crammed wiring/ Labor intensive wiring
Display hard to see
Long cabling susceptible to noise
Extended length thermo couple can increase cost substantially

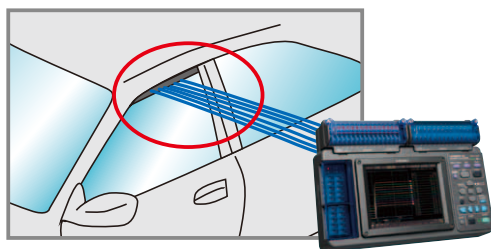


Solution Sensor cable to main unit is eliminated
Shorter thermo couple cable length
less susceptible to noise
Wiring completed in short time

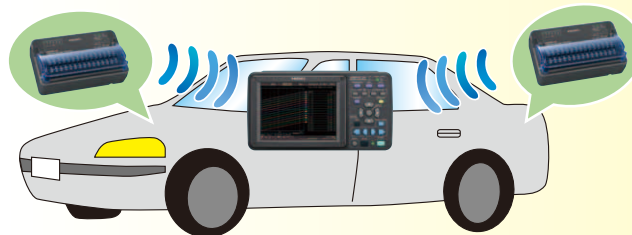
3 Wireless devices provide airtight environment

Chamber, Automotive, etc.

Before             After



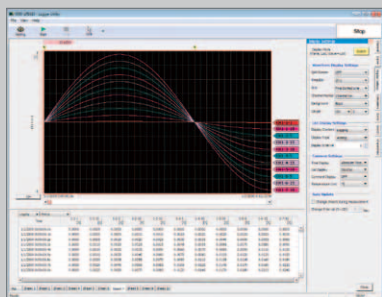
Issue 1 Windows and/or doors cannot be closed completely
Issue 2 Airtight environment cannot be maintained because gasket is not sealed



Solution A wireless environment enables gasket to seal completely.
Data collection is possible with airtight environment

PC Measurement

Logger Utility Data collection software (Bundled accessory)



- The supplied Logger Utility software enables processing of measurement data on a PC
- View past data during recording
- Output PC data to a printer

Control measurements from a PC screen

Connect the PC to the Wireless Logging Station using USB or via LAN. Use the supplied Logger Utility software to record data on a PC in real-time. Scroll backwards through the displayed trend graph window to view past waveforms even while recording.

Note: Company names and Product names appearing in this catalog are trademarks or registered trademarks of various companies.

HIOKI

HIOKI E. E. CORPORATION

HEADQUARTERS:

81 Koizumi, Ueda, Nagano, 386-1192, Japan
TEL +81-268-28-0562 FAX +81-268-28-0568
<http://www.hioki.com> / E-mail: os-com@hioki.co.jp

HIOKI USA CORPORATION:

TEL +1-609-409-9109 FAX +1-609-409-9108
<http://www.hiokiusa.com> / E-mail: hioki@hiokiusa.com

HIOKI (Shanghai) SALES & TRADING CO., LTD.:
TEL +86-21-63910090 FAX +86-21-63910360
<http://www.hioki.cn> / E-mail: info@hioki.com.cn

HIOKI INDIA PRIVATE LIMITED:
TEL +91-124-6590210 FAX +91-124-6460113
E-mail: hioki@hioki.in

HIOKI SINGAPORE PTE. LTD.:
TEL +65-6634-7677 FAX +65-6634-7477
E-mail: info-sg@hioki.com.sg

HIOKI KOREA CO., LTD.:
TEL +82-42-936-1281 FAX +82-42-936-1284
E-mail: info-kr@hioki.co.jp

DISTRIBUTED BY

T Equipment
.NET
An Interworld Highway, LLC Company