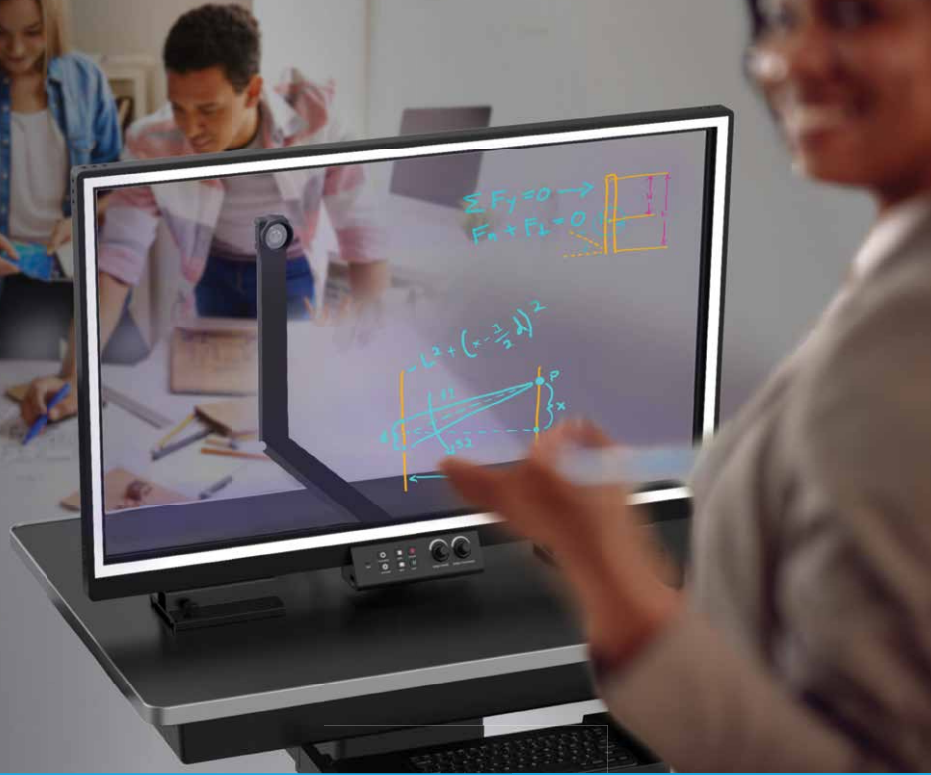




Station

Embodied Teaching, Now Mobile



Get unstuck from the front of the room.

eGlass Station is an all-in-one wireless podium that allows teachers to use their illuminated lightboard in new ways, anywhere in the classroom.

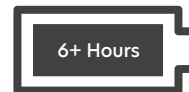


All Day Teaching Made Easier:

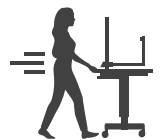
- 35" or 50" eGlass® Lightboard
- Left and Right Pullout Computer Trays
- Built-In Battery Powers eGlass® and Computer
- Pullout Keyboard Tray
- Sit/Stand Height Adjustable Podium
- Mobile



A mobile station for your eGlass. No need to find desk space.



Built-in battery for 6+ hours of wireless use.



Use eGlass anywhere in the classroom.

*Beamio™, and wireless keyboard and mouse can be bundled with the eGlass Station for an additional cost.

Learn More at www.eglass.io

by **Pathway**
THE MAKERS of eGLASS & HOVERCAM

© Copyright 2022 eGlass. All rights reserved. eGlass is a registered trademark of Pathway Innovations, Inc. This is a preliminary datasheet and is subject to change without notice. Depicted product appearance, features and specifications may vary in the final product(s). eGlass shall not be liable for technical or editorial errors or omissions contained herein. eGlass disclaims all responsibility and liability for the distribution of and/or reliance on this datasheet. eGlass and eGlass software may be protected by one or more of the following patents and patent applications: Patent No. US8508751, US10523893, US10586307, US10402940, USD809600, US16/784654, US29/756006, US17/079345, US29/768320. 220823