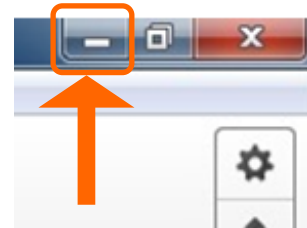


*Before attempting to follow these instructions please ensure that your ELMO Document Camera is connected to your computer via a USB cable and that an applicable version of Image Mate is installed. If you do not have a copy of Image Mate, please visit [www.elmoussa.com/support](http://www.elmoussa.com/support) and follow the steps to download the version for your camera. Note: These instructions are for those using a Windows based computer.*

**1** Open SMART Notebook 11 and create a blank Notebook page.

**2** Minimize SMART Notebook 11.  
It must still be running as you will use it later.



**3** Start ELMO Image Mate by double clicking on the desktop icon then maximize the windows to make the image fill the screen. For users of Image Mate 3, be sure to choose the hand icon from the Image Mate toolbar. You can hide the Image Mate toolbar by clicking on the arrow at the left side of the toolbar.



**4** While in full screen mode, press the Windows key on keyboard.  
The Taskbar will appear and allow you to see all open applications.

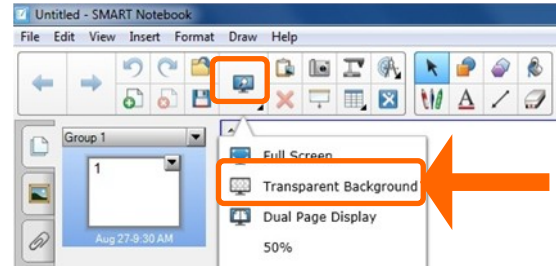


**5** Choose SMART Notebook 11 from the Taskbar.  
This will bring SMART Notebook 11 to the primary window position.



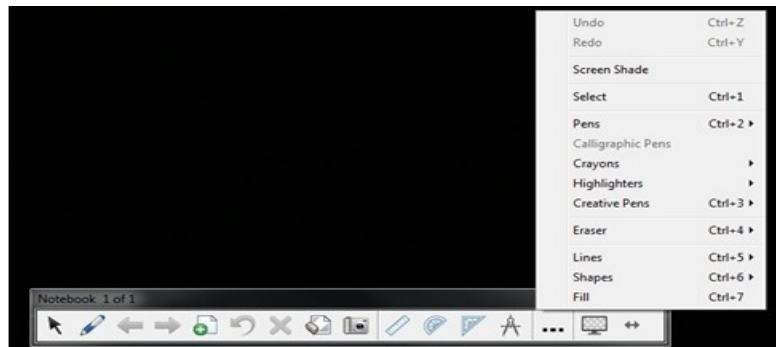
6

Click on the **View Screens** drop down menu and select **Transparent Background**.



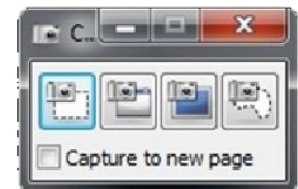
7

You can now use your SMART Board pens to interact with the ELMO Document Camera Image. SMART Notebook 11 will display the toolbar seen below that allows you to use additional options available within the application.



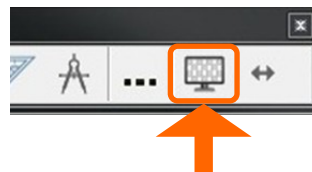
8

The **Capture** toolbar allows you to save the ELMO Document Camera Image and annotation to a new SMART Notebook 11 page.



9

When you are finished interacting with the ELMO Document Camera or would simply like to use one of the other features of SMART Notebook 11 click on the screen icon on the tool bar to exit transparent mode.



**ELMO**  
— SINCE 1921 —

# ELMO Smart Document Camera + Notebook 11

1 Ensure your ELMO Document Camera is connected via USB and Image Mate software is installed.

2 Open SMART Notebook 11 and create a blank Notebook page. Minimize SMART Notebook 11. It must still be running as you will use it later.



3 Open Image Mate then maximize the windows to make the image fill the screen.



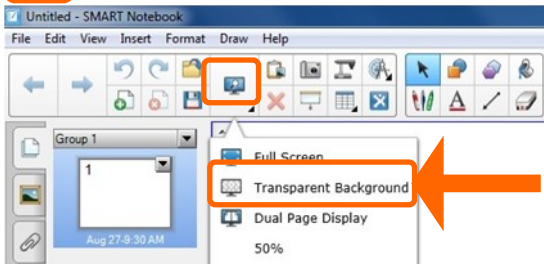
4 While in full screen mode, press the Windows key on keyboard. The Taskbar will appear and allow you to see all open applications.



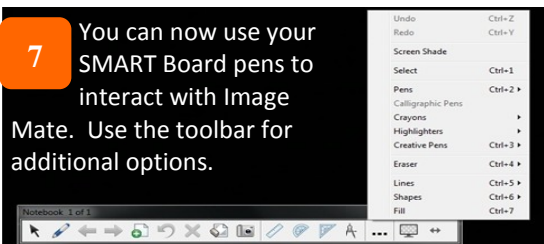
5 Choose SMART Notebook 11 from the Taskbar. This will bring SMART Notebook 11 to the primary window position.



6 Click on the **View Screens** drop down menu and select **Transparent Background**.



7 You can now use your SMART Board pens to interact with Image Mate. Use the toolbar for additional options.



8 The **Capture** toolbar allows you to save the ELMO Document Camera Image and annotation to a new SMART Notebook 11 page.



9 When finished interacting with Image Mate, click on the screen icon on the tool bar to exit transparent mode.



Cut and place near Smartboard