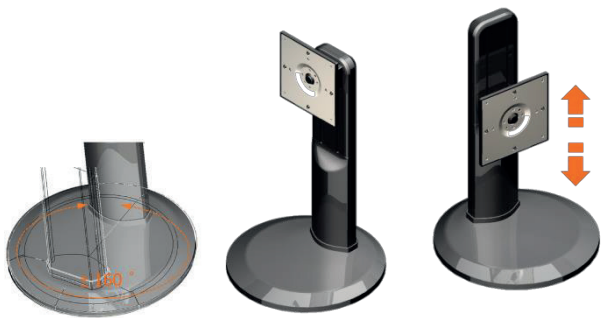


# PVK-302

Adjustable table stands for IDea Smart Signboard

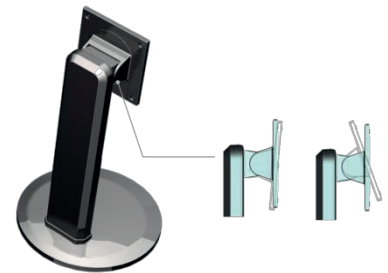


## ◀ Easy Adjustment

With the deluxe gas spring, height adjustment can't be easier by simply dragging up or pushing down the screen. The rotatable base also allows swivel screen without lift the base.

## Flexible to Tilt Display Angle ▶

Tilt the screen to the right angle. The pressure lock will hold screen at its position.



## ◀ Portrait or Landscape

Adjust display position by simply rotating the screen.

## Product Photos



## Technical Specification

Item	Description		Spec
Capacity	Max. holding weight		4.5 kg (9.92 lbs)
Mounting	Built-in VESA MIS-D		100 mm x 100 mm
System dimension	Width		244.5 mm (9.63")
	Max. height		407.7 mm (16.05")
	Depth		28 mm (1.10")
	Weight		2.3 kg (5.07 lbs)
Package dimension	Individual size		305 mm x 305 mm x 480 mm (12" x 12" x 18.9")
	Individual weight		3.3 kg (7.27 lbs)
Tilt	Range (°)	Down	- 5 ° ± 2 °
		Up	22 ° ± 2 °
Swivel	Range (°)	Left	160 ° ± 2 °
		Right	160 ° ± 2 °
Pivot	Range (°)	Left	- 1 ° ± 1 °
		Right	91 ° ± 1 °

### IAdea Headquarter

### IAdea America Corp.

