

# QUICK AND ACCURATE TARGETING

## PROFESSIONAL RELIABILITY

The T-Cam 380 handheld thermal camera provides quality thermal images to meet professional thermography field requirements. It has a wide temperature range from  $-20\text{ }^{\circ}\text{C}$  to  $550\text{ }^{\circ}\text{C}$  ( $-4\text{ }^{\circ}\text{F}$  to  $1022\text{ }^{\circ}\text{F}$ ) allowing for electrical and HVAC inspections as well as automotive maintenance. Enable the center/highest/lowest temperature point and alarming features to assist in detecting critical failures. The laser pointer can locate targets quickly and accurately. Take advantage of WiFi settings to view images on a mobile device.

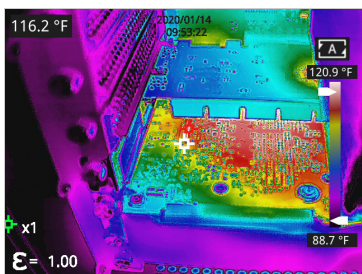


T-Cam 380 P-Series



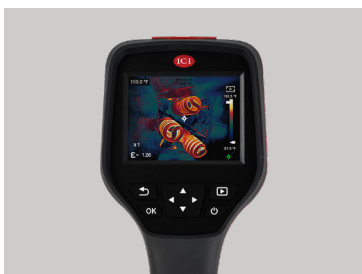
## RUGGED FOR HEAVY USE

Rated IP54 to protect against dirt, dust, and other non-corrosive materials. 2 m (6.56') drop-rating to withstand the rigors of tough inspections. Each T-Cam 380 is shipped with two 4500 mAh batteries and a charging dock to recharge batteries on-the-go and meet the requirements of heavy daily use.



## QUALITY THERMAL IMAGES

Provides 384 x 288 quality resolution thermal images. Captures visible images with 5 MP digital camera. Features manual adjustment for clear and precise focus. Features 4 image modes: picture-in-picture, visible, infrared and ICI Dual Vision for situational awareness and target location. 7 color palettes to enhance viewing and easily find hot spots. Save images to the provided MicroSD card.



## EASY TO USE

Quick start instruction guide provided. No additional training required. One-handed, 5-button easy operation for fast inspections. Use handheld or on a tripod. Features a 3.5" LCD high definition (640 x 480) capacitive touch screen with adjustable screen brightness for on the spot analysis. Utilize the Type-C connector to plug-and-play streaming to an external device.



The T-Cam 380 handheld thermal camera provides high temperature measuring from -20 °C to 550 °C (-4 °F to 1022 °F) and an accuracy of  $\pm 2^{\circ}\text{C}$  ( $\pm 3.6^{\circ}\text{F}$ ) or  $\pm 2\%$ . Provides stellar 384 x 288 images to meet the needs of professional thermographers. Manual focus provides clear images of targets from near to far, especially close-up targets. Meets requirements for many fields, including building inspections and vehicle maintenance. This makes the T-Cam 380 adaptable to various thermal applications. Take advantage of WiFi settings to view images on a mobile device. Stream media to a PC using the USB Type-C connector.

## Features

- WiFi support
- Touchscreen, 3.5" color LCD
- Central spot, hot spot and cold spot tracing
- Click-and-drag temperature measurement
- High-temperature measuring
- Single-handed operation with 5-button design
- Alarm threshold settings
- ICI Dual Vision - IR and visible
- 2 m (6.56') drop protection
- Voice annotation
- Small size
- Light weight

## Applications

- Electrical poles
- Electrical inspections
- Process control
- Plant/General maintenance
- Industrial vision systems
- Transportation/Automotive
- HVAC/AC
- Home/building Inspections
- Building automation

## Accessories

- USB Cable
- 32 GB Micro-SD card
- Charging dock
- 2 batteries
- Microphone with noise cancellation (built-in)
- 1/4"-20 tripod support (built-in)

## Specifications

- **Pixel Resolution:** 384 x 288
- **Accuracy:**  $\pm 2^{\circ}\text{C}$  ( $\pm 3.6^{\circ}\text{F}$ ) or  $\pm 2\%$
- **Temperature Range:** -20 °C to 550 °C (-4 °F to 1022 °F)
- **Operation Range:** -10 °C to 50 °C (14 °F to 122 °F)
- **Storage Range:** -20 °C to 60 °C (-4 °F to 140 °F)
- **Detector Array:** FPA (VOx)
- **Pixel Pitch:** 12  $\mu\text{m}$
- **FOV:** 43.7° x 31.9°
- **IFOV:** 1.98 mrad
- **Focal Length:** 3.2 mm
- **Focus:** manual
- **Spectral Band:** 8  $\mu\text{m}$  to 14  $\mu\text{m}$
- **Thermal Sensitivity (NETD):**  
< (50 mK) 0.05 °C at 30 °C (86°F)
- **Frame Rate:** 25 Hz
- **Humidity:** 10% to 95% non-condensing
- **Pixel Operability:** > 99 %
- **Drop Rating:** 2 m (6.56')
- **Shock/Vibration:** 25 G/2G
- **Dimensions (without lens):**  
256.4 mm x 105.1 mm x 105.3 mm (L x W x D  $\pm 0.5$  mm)  
(10.09" x 4.14" x 4.15" (L x W x H  $\pm 0.02$ "))
- **Power:** 5V DC 2A
- **Battery:** Li-ion, rechargeable/replaceable
- **Operation Time:** 4 hours
- **Charging Time:** 3 hours
- **Weight (without lens):** 670 g (1.48 lbs)
- **Interface:** USB Type-C, Micro SD
- **Video Format:** H.264 (without data)
- **Image Format:** IR JPG (with data) + visible JPG
- **Image Polarity:** 7 options
- **Image Modes:** IR, ICI Dual Vision, picture-in-picture, visible
- **Data Transmission:** USB Type-C, WiFi support
- **Memory:** MicroSD card (up to 64 GB)
- **Screen:** 3.5" color LCD touchscreen, 640 x 480
- **Brightness:** adjustable
- **Digital Camera:** 5 MP
- **Zoom:** 2x, 4x, 8x
- **Emissivity Correction:** 0.01 to 1.0
- **Measurement Units:** °C, °F, °K
- **IP Rating:** IP54
- **Laser:** Class II 650 nm, < 1 mW
- **Language:** multi-language
- Automatic alarms
- Internal non-uniformity correction (NUC)
- Voice Annotation
- Media streaming to PC via USB Type-C
- WiFi support