

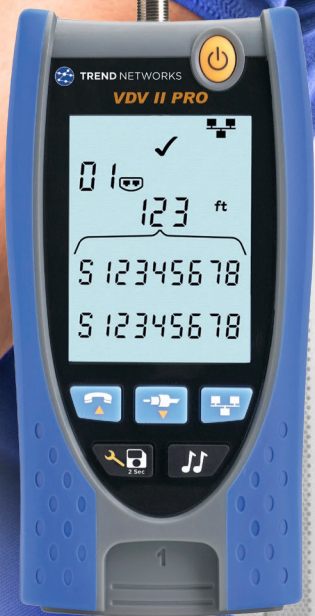
Now Create
and Manage Test
Reports with
AnyWARE Cloud



VDV II

TEST. UPLOAD. REPORT.

The ultimate Voice, Data and Video
Cable Verifier



TREND NETWORKS

Depend On Us

Why do I need a VDV II with Cloud?

From Basic to Pro, you're always connected with test data you can depend on. AnyWARE.

The new VDV II Series eliminates guesswork and documents proper operation when installing, maintaining and troubleshooting data, voice and video cabling.

Test results are stored in real-time on the free AnyWARE Cloud mobile app and are seamlessly uploaded to AnyWARE Cloud where professional PDF reports are generated.

Historically, reporting could not be obtained with affordable wiremappers. VDV II has changed the game with Cloud connectivity across the full range.



VDV II

TEST. UPLOAD. REPORT.

Send test results to the TREND AnyWARE Cloud app with the push of a button. Upload the results to the AnyWARE Cloud where you can create and manage test reports and send professional PDF reports without leaving the job site.



TREND
AnyWARE
CLOUD
APP



TREND
AnyWARE
CLOUD



VDV II

Performs standard tests for copper cabling, including:

- Coax (F-type), 6 Pin (RJ11/12) and 8 Pin (RJ45) Connectors
- Tests for Miswires, Opens, Shorts and Split Pairs
- Tests UTP and STP cabling
- Analog Tone Generator
- Voltage Protection
- Instantaneous Results
- Compatible with Optional Numbered Remotes
- AnyWARE Cloud connectivity and reporting via the AnyWARE App (NEW feature)



VDV II Plus

All the features of the VDV II and...

- Larger 2.9" Display
- Backlit screen
- Network Switch Port Flashing
- Cable Length
- Distance to Open / Cut Pairs
- Includes Carry Case & Test Leads

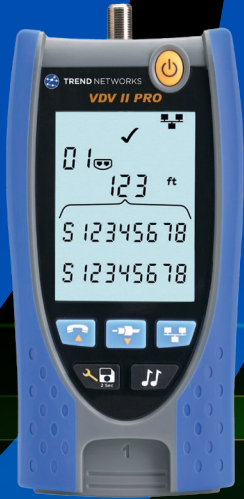


VDV II Pro

All the features of the VDV II Plus and...

- 10M/100M/1G/2.5G/5G/10G Ethernet Speed Detection
- Distance to Open / Short (TDR)
- PoE Detection with Voltage per Pair
- Analog and Digital Phone Service Detection
- Analog/Digital Tone Generator
- Selectable 4-Pair/2-Pair operation for standard and industrial cabling

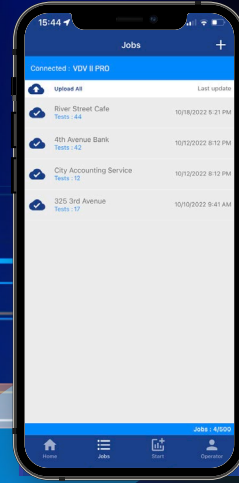
STEP 1
Send current test results to be stored in AnyWARE Cloud App



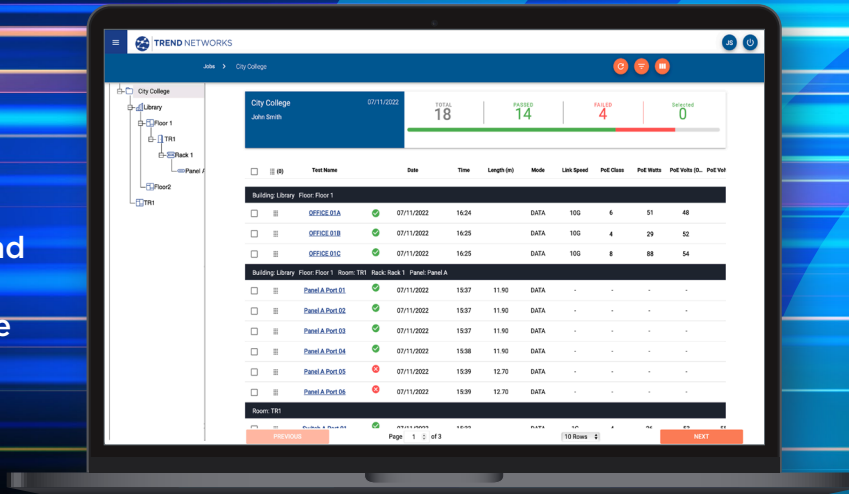
TREND
AnyWARE
CLOUD
APP



STEP 2
Upload completed test results to AnyWARE Cloud



STEP 3
Manage test results and download or send a PDF test report of the completed job



TREND
AnyWARE
CLOUD

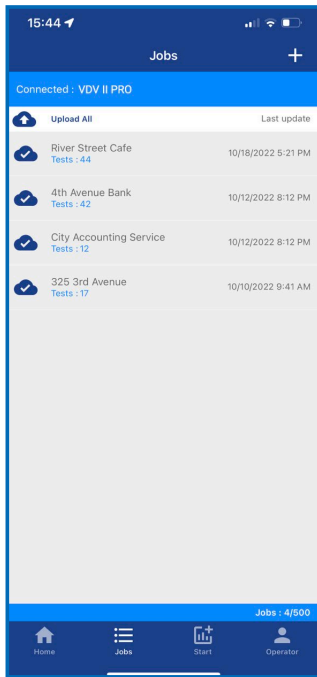
Test and generate reports in just 3 simple steps.

AnyWARE Cloud benefits:

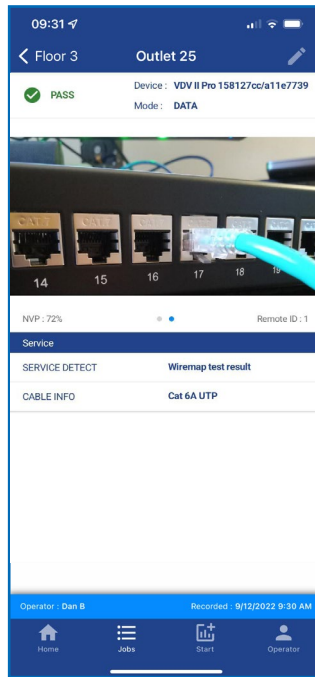
- Standardize your work flow with comprehensive testing and documentation
- Upgrade from check-lists and Excel spreadsheets to professional test reports
- Free, unlimited data storage
- No need to invest in IT hardware for self-hosted Cloud access
- Runs in a web browser, compatible with PC, Mac, Linux, Android and iOS
- Never lose data with continuous back ups
- Save time with efficient project management of teams in multiple locations

AnyWARE Cloud is hosted on Microsoft Azure used by 95% of Fortune 500 companies

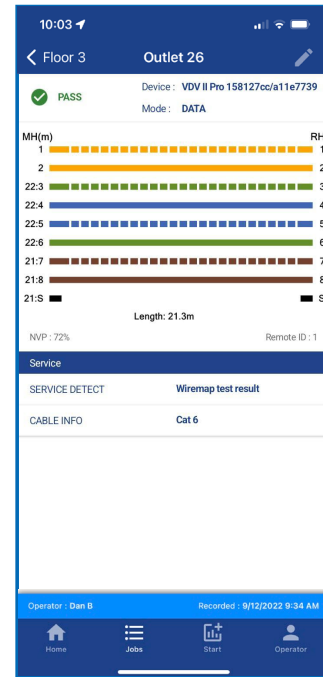
AnyWARE App & Cloud



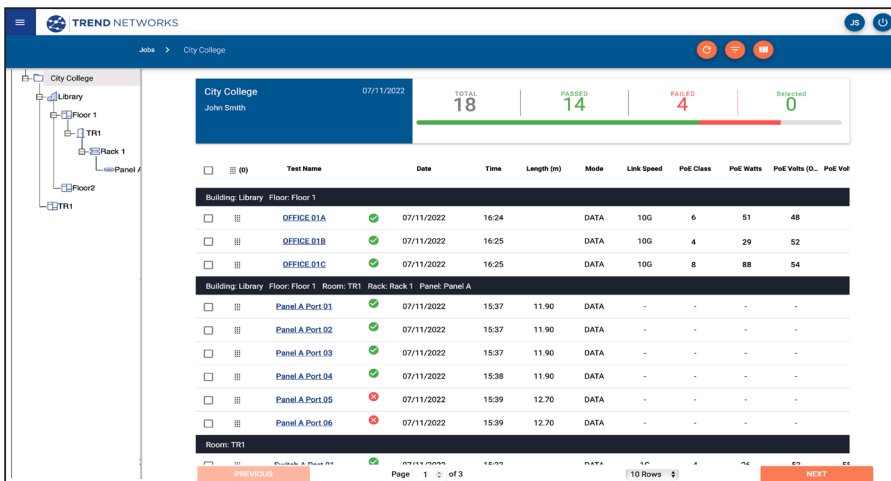
Organize test results in up to 500 job folders with a total capacity of 25,000 tests.



Attach photos to test results using the app for complete documentation.



Detailed test results available after upload for verification and troubleshooting.



View and manage uploaded test results with AnyWARE Cloud using any web browser. Organize test results using AnyWARE Explorer to easily drag & drop results between folders. Create professional PDF reports with your company logo and send from the cloud directly to customers.

No USB sticks • No lost data • No PC Software • No callbacks
Access your data AnyWARE anytime.

Multimedia Support

RJ45, RJ11/RJ12 and coax ports for verification of low voltage copper cables

UTP and STP Testing

Support for all common LAN cables (TIA 568A/B wiring schemes)

TDR Length Testing and Troubleshooting

Pinpoints cable faults eliminating unnecessary guess work (Pro model)

Selectable 4-Pair/2-Pair

Test standard and industrial cabling

Large Backlit Screen

Instantaneous, easy to read test results (Plus & Pro model)

Tone Generator

Trace cables with a compatible inductive tone probe (optional). Analog (all models) / Digital (Pro model)

Media Service Detection

Identifies analog (PBX) and digital (ISDN) telephone services

PoE Detection

PoE service detection with voltage information (Pro model)

Ethernet Detection

Displays network speed up to 10 Gb/s (Pro model)

Storage and Protection of Remote Unit

Reduces the chance of losing or damaging the remote unit. Additional numbered remotes available

Voltage Protection

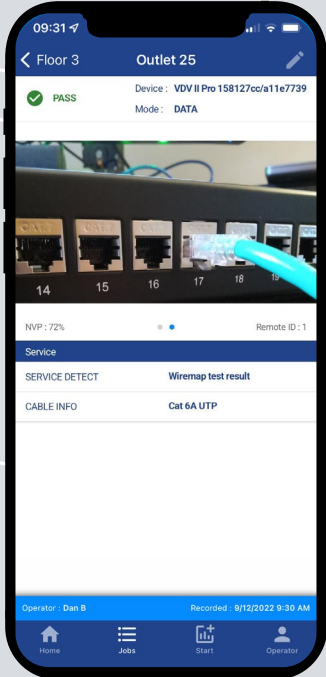
Cable testing disabled if >2V detected

Attach photo to test results

Create a professional test report complete with photos

Ethernet Link Speed

Ethernet Speed Detection 10M/100M/1G/2.5G/5G/10G (Pro model)



Requires a mobile device that supports Bluetooth Low Energy (BLE) 5.0 or higher

Cable Verification and Troubleshooting

Accurate fault finding that saves time and money

The VDV II Pro utilizes Time Domain Reflectometry (TDR) to accurately measure cable length and provide distance to fault information. This speeds up fault finding as well as minimizing disruption and potential damage to fixtures and fixings.

Instant results

With comprehensive details on faults such as opens, shorts, crossovers and split pairs, VDV II identifies wiring errors instantly.

No need for separate testers

The integrated RJ11/RJ12 (voice), RJ45 (data) and F-Type (video) connectors allow faster testing of most types of low-voltage cables by eliminating the need for separate testers.

Validate voice and data services faster

VDV II quickly determines which media service is running over the cable, such as Ethernet, ISDN, PBX and PoE resulting in faster fault diagnosis.

Quickly determine network speed

Troubleshooting active Ethernet networks is also made easier with in-built network detection that displays the speed (10/100/1G/2.5G/5G/10G) and duplex (Half/Full) status of a network port.

Voltage protection for your tester

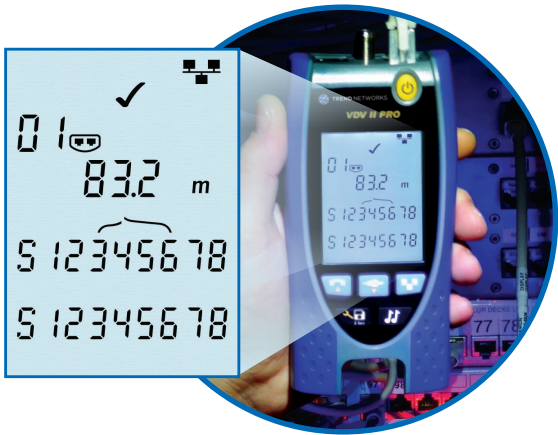
The VDV II will detect high voltages and provide a visible and audible warning to prevent damage to the tester.

Cable tracing to save time

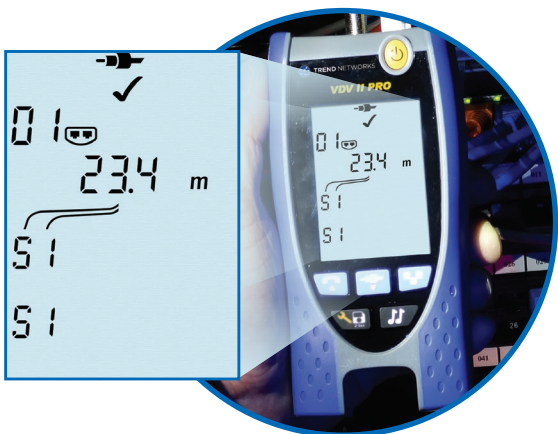
The analog / digital tone generator with multiple tones can be used with most analog and digital cable tracing probes which is essential for finding faulty or mis-labelled cabling.

Port identification

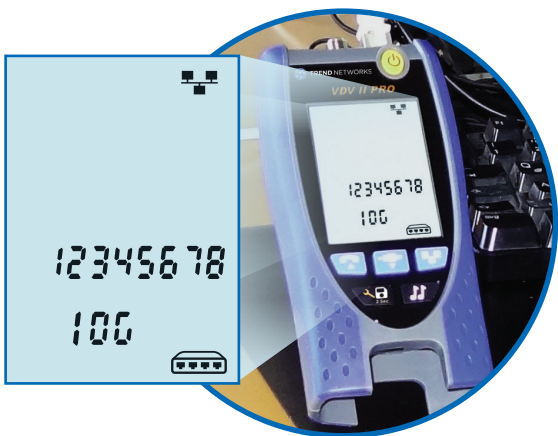
The port blink function will identify the switch port to which a cable is connected.



Wiremap with length



Coax testing

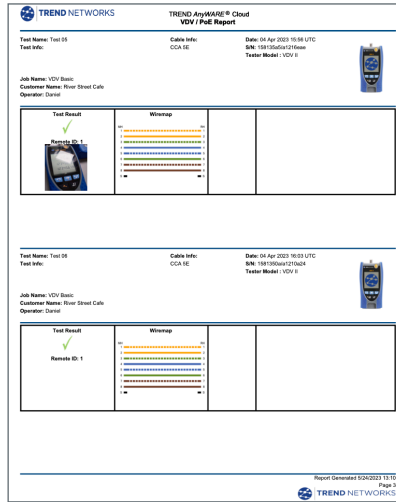


Service detection

VDV II

The ultimate Cloud Enabled Voice, Data and Video Cable Verifier





More than just a wiremapper



Ordering Information

VDV II Range	
Part No.	Kit Contents
R158007	VDV II – Voice, Data and Video Cable Verifier. Includes 1 x tester, 1 x dual port remote unit, 1 x coax remote unit, 1 x alkaline battery, 1 x multi-language user guide.
R158008	VDV II Plus – Voice, Data and Video Cable Verifier. Includes 1 x tester, 1 x dual port remote unit, 1 x coax remote unit, 1 x alkaline battery, 1 x multi-language user guide, 2 x RJ45 to alligator clip cable 390mm, 2 x screened RJ45 to RJ45 cable 150mm, 2 x RJ11/12 to RJ11/12 cable 100mm, 1 x F-type plug to F-type plug cable 230mm, 1 x F-81 barrel splice, 1 x BNC female to F-type male adaptor, 1 x BNC female to F-type female adaptor, 1 x RCA female to F-type male adaptor, 1 x RCA female to F-type female adaptor, 1 x wallet wiring card, 1 x carry case.
R158005	VDV II Pro – Voice, Data and Video Cable Verifier. Includes 1 x tester, 1 x dual port remote unit, 1 x coax remote unit, 1 x alkaline battery, 1 x multi-language user guide, 2 x RJ45 to alligator clip cable 390mm, 2 x screened RJ45 to RJ45 cable 150mm, 2 x RJ12 to RJ12 cable 100mm, 1 x F-type plug to F-type plug cable 230mm, 1 x F-81 barrel splice, 1 x BNC female to F-type male adaptor, 1 x BNC female to F-type female adaptor, 1 x RCA female to F-type male adaptor, 1 x RCA female to F-type female adaptor, 1 x wallet wiring card, 1 x carry case.

Optional Accessories

Part No.	Kit Contents
158050	 Kit of 12 x RJ45 remote units* (#1 - #12) for full wiremap testing, fault finding, length and ID
158051	 Kit of 24 x RJ45 identifiers** (#1 - #24) for length and ID only
158053	 Kit of 12 x coax remote units* (#1 - #12) for length and ID only
R180001	 Amplifier Probe

* Separate numbered remotes allow multiple cables to be tested more quickly

** Multiple identifiers simplify cable labelling at the patch panel

Basic Specifications

Dimensions (mm)	Weight	Length Range	Battery Type
160 x 76 x 36	0.26 kg	0.3 - 450m / 1-1476 ft (Plus and Pro only)	9V alkaline. Typically 20 hours minimum continuous use (backlight off)

For detailed specifications, please visit our website.



Apple and the Apple logo are trademarks of Apple Inc., registered in the U.S. and other countries. App Store is a service mark of Apple Inc. Android is a trademark of Google Inc. All Rights Reserved. TREND, TREND NETWORKS, the Connected Dot Device and the VDVII logos are trademarks or registered trademarks of TREND NETWORKS.

TREND NETWORKS North America
300 Roundhill Drive, Suite 1,
Rockaway, NJ 07866, USA
Tel. 973-957-7700
contactus@trend-networks.com
www.trend-networks.com



Specification subject to change without notice. E&OE
© TREND NETWORKS 2023
Publication no.: 158853. Rev 1.