



IDEAL NETWORKS

TEquipment
USA
.NET
An Interworld Highway, LLC Company

Call Us 1.877.571.7901



LanTEK III | FiberTEK III

Certifier for Copper and Fiber Cabling

LanTEK III | FiberTEK III

Certifier for Copper
and Fiber Cabling

The LanTEK III is an easy to use cable certifier that meets existing TIA and ISO/IEC performance requirements for testing up to Cat 7A/1000MHz. FiberTEK III adapters are used with LanTEK III for fast and simple certification of high bandwidth single-mode and multimode fiber optic cabling including support for encircled flux testing.



Test data when you want it, where you want it

Using the free IDEAL AnyWARE app, field technicians can share test data with colleagues or customers without leaving the jobsite, resulting in greater collaboration, more on-time job completions and reduced costs.

New troubleshooting features that save time and money

Should a cable prove to be faulty, troubleshooting is easy with the introduction of Time Domain Return Loss (TDRL) and Time Domain Near End Cross Talk (TDNEXT) measurements.

To pinpoint fiber cabling faults every FiberTEK III adapter includes a built-in visible light source to help you visually pinpoint faults and locate fiber ports.

These additional features help locate hidden connections, splices and cable faults and can save many hours previously spent troubleshooting problems on the job.

New permanent link (PL) adapter saves money

New PL adapters reduce down time and lower maintenance costs with field replaceable RJ45 contacts that eliminate the need to replace the complete adapters. New PL adapters feature centered connectors to ensure compatibility with all brands of Cat 6A/ISO Class E_A cabling solutions. The PL adapters use high performance, ultra-flexible cable that allows them to be used in confined spaces without damaging the PL adapter or the outlet being tested.

Modular solution to reduce capital costs

For many cable installers there is pressure to reduce capital equipment costs. The LanTEK III and FiberTEK III uniquely offer a pick and mix solution of components, therefore you only pay for what you need. This includes a wide range of test modules, accessories and Careplans to satisfy your specific requirements.



Permanent Link Testing Modules

To test and certify UTP/STP cabling from the patch panel to the work area outlet. The RJ45 contacts on the tip of the Permanent Link Modules are field replaceable to reduce the cost of ownership.



Channel Testing Modules

Select from a wide wide range of Channel testing modules for various applications including: RJ45, GG45, TERA and EC7.



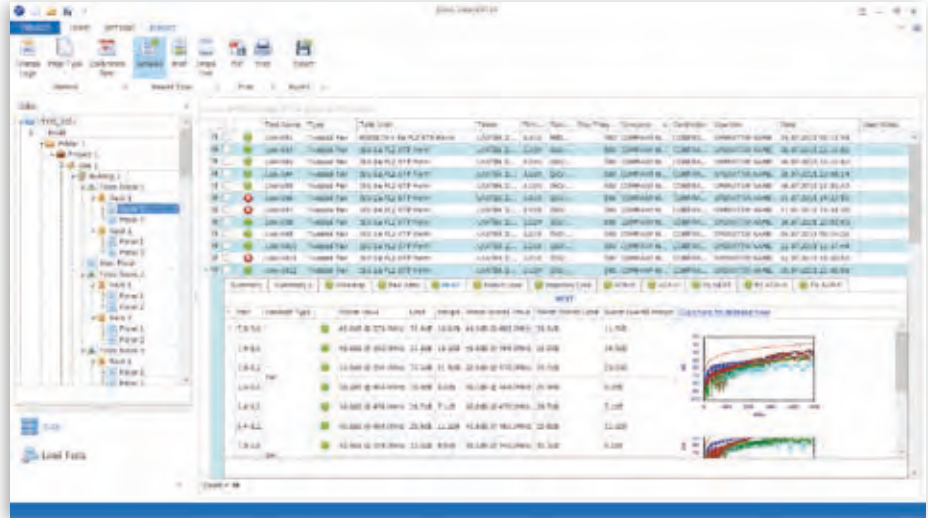
Fiber Optic Testing Modules

FiberTEK III modules offer fast and simple Tier 1 certification of high bandwidth single-mode and multimode fiber optic cabling including support for encircled flux testing.

Efficient Data Management Software

IDEAL Data CENTER (IDC) is the free test result management software for the LanTEK III and FiberTEK III series of cable certifiers. IDC allows data cable installation professionals to easily download, manage, edit and print PDF reports. IDC offers a simple user interface with time saving features including:

- Microsoft ribbon toolbars for ease of use
- Only 4 button clicks to import data from the tester
- >10,000 results managed in a single job
- Professional reporting for your clients
- Ability to group and filter test results into categories including:
 - Test limits
 - Devices
 - Or any other data within the database



Professional Reporting

Automatically generate test reports in PDF or CSV format. The summary page of each report can be customized to include logo, company and operator details.

Choose between 3 different reports that can show either passed, failed or all test results in each report:

- Summary
- Brief
- Full

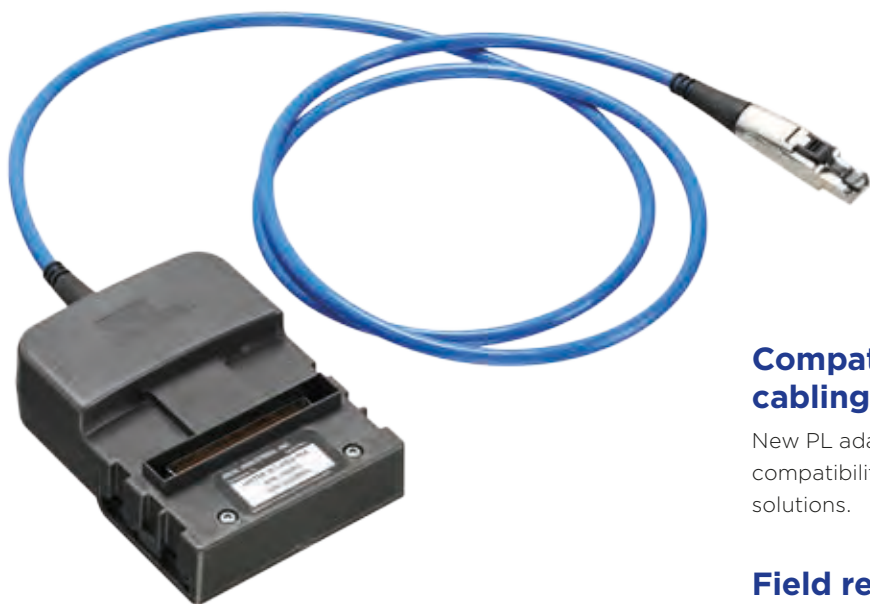
The collage displays three sample test reports from IDEAL NETWORKS. Each report includes a header with job details, a table of test results, and a graph showing test data over time. The reports are titled 'IDEAL INDUSTRIES, INC. CERTIFIED - TEST REPORT' and 'IDEAL Networks Certified Test Report'.

Test Name	Length (ft)	Date (MM/DD/YYYY HH:MM)	Cable Type	Test Standard
Link-001	10.4	10/20/2015 11:22 AM	EN50731 1 Ea PL2 STP Pann	EN50731.1
Link-0010	10.6	10/20/2015 12:27 PM	ISO Ea PL2 STP Pann	ISOIEC 11801.2
Link-0011	10.5	10/20/2015 11:14 AM	EN50731 1 Ea PL2 STP Pann	EN50731.1
Link-0012	10.3	10/20/2015 11:05 AM	ISO Ea PL2 STP Pann	ISOIEC 11801.2
Link-0013	10.1	10/20/2015 11:10 PM	ISO Ea PL2 STP Pann	ISOIEC 11801.2
Link-0014	10.4	10/20/2015 11:08 PM	ISO Ea PL2 STP Pann	ISOIEC 11801.2
Link-0015	10.2	10/20/2015 11:05 PM	ISO Ea PL2 STP Pann	ISOIEC 11801.2
Link-0016	10.4	10/20/2015 11:03 PM	ISO Ea PL2 STP Pann	ISOIEC 11801.2
Link-0017	10.5	10/20/2015 11:16 AM	ISO Ea PL2 STP Pann	ISOIEC 11801.2
Link-0018	10.7	10/20/2015 11:00 PM	ISO Ea PL2 STP Pann	ISOIEC 11801.2
Link-0019	10.5	10/20/2015 11:10 AM	EN50731 1 Ea PL2 STP Pann	EN50731.1
Link-002	10.2	10/20/2015 11:10 PM	ISO Ea PL2 STP Pann	ISOIEC 11801.2
Link-0020	10.7	10/20/2015 11:05 AM	ISO Ea PL2 STP Pann	ISOIEC 11801.2
Link-0021	10.4	10/20/2015 11:16 AM	EN50731 1 Ea PL2 STP Pann	EN50731.1
Link-0022	10.2	10/20/2015 11:10 PM	ISO Ea PL2 STP Pann	ISOIEC 11801.2
Link-0023	10.1	10/20/2015 11:10 PM	ISO Ea PL2 STP Pann	ISOIEC 11801.2
Link-0024	10.2	10/20/2015 11:08 PM	ISO Ea PL2 STP Pann	ISOIEC 11801.2
Link-0025	10.4	10/20/2015 11:05 PM	ISO Ea PL2 STP Pann	ISOIEC 11801.2
Link-0026	10.4	10/20/2015 11:03 PM	ISO Ea PL2 STP Pann	ISOIEC 11801.2
Link-0027	10.5	10/20/2015 11:16 AM	ISO Ea PL2 STP Pann	ISOIEC 11801.2
Link-0028	10.5	10/20/2015 11:17 AM	ISO Ea PL2 STP Pann	ISOIEC 11801.2
Link-0029	10.7	10/20/2015 11:00 PM	ISO Ea PL2 STP Pann	ISOIEC 11801.2
Link-003	10.1	10/20/2015 11:10 PM	ISO Ea PL2 STP Pann	ISOIEC 11801.2
Link-0030	10.6	10/20/2015 12:27 PM	ISO Ea PL2 STP Pann	ISOIEC 11801.2
Link-0031	10.5	10/20/2015 11:14 AM	EN50731 1 Ea PL2 STP Pann	EN50731.1
Link-0032	10.3	10/20/2015 11:05 AM	ISO Ea PL2 STP Pann	ISOIEC 11801.2
Link-0033	10.4	10/20/2015 11:13 AM	EN50731 1 Ea PL2 STP Pann	EN50731.1
Link-0034	10.1	10/20/2015 11:10 PM	ISO Ea PL2 STP Pann	ISOIEC 11801.2
Link-0035	10.2	10/20/2015 11:10 PM	ISO Ea PL2 STP Pann	ISOIEC 11801.2
Link-0036	10.4	10/20/2015 11:08 PM	ISO Ea PL2 STP Pann	ISOIEC 11801.2
Link-0037	10.2	10/20/2015 11:05 PM	ISO Ea PL2 STP Pann	ISOIEC 11801.2
Link-0038	10.5	10/20/2015 11:03 PM	ISO Ea PL2 STP Pann	ISOIEC 11801.2
Link-0039	10.5	10/20/2015 11:16 AM	ISO Ea PL2 STP Pann	ISOIEC 11801.2
Link-004	10.4	10/20/2015 11:08 PM	ISO Ea PL2 STP Pann	ISOIEC 11801.2
Link-0040	10.5	10/20/2015 11:17 AM	ISO Ea PL2 STP Pann	ISOIEC 11801.2
Link-0041	10.7	10/20/2015 11:00 PM	ISO Ea PL2 STP Pann	ISOIEC 11801.2
Link-0042	10.6	10/20/2015 12:27 PM	ISO Ea PL2 STP Pann	ISOIEC 11801.2
Link-0043	10.5	10/20/2015 11:14 AM	EN50731 1 Ea PL2 STP Pann	EN50731.1
Link-0044	10.3	10/20/2015 11:05 AM	ISO Ea PL2 STP Pann	ISOIEC 11801.2
Link-0045	10.4	10/20/2015 11:10 PM	ISO Ea PL2 STP Pann	ISOIEC 11801.2
Link-0047	10.2	10/20/2015 11:05 PM	ISO Ea PL2 STP Pann	ISOIEC 11801.2
Link-0048	10.4	10/20/2015 11:03 PM	ISO Ea PL2 STP Pann	ISOIEC 11801.2
Link-0049	10.5	10/20/2015 11:10 PM	ISO Ea PL2 STP Pann	ISOIEC 11801.2
Link-005	10.2	10/20/2015 11:05 PM	ISO Ea PL2 STP Pann	ISOIEC 11801.2
Link-0050	10.7	10/20/2015 11:00 PM	ISO Ea PL2 STP Pann	ISOIEC 11801.2
Link-0051	10.5	10/20/2015 11:17 AM	ISO Ea PL2 STP Pann	ISOIEC 11801.2
Link-0052	10.3	10/20/2015 11:10 PM	ISO Ea PL2 STP Pann	ISOIEC 11801.2
Link-0053	10.4	10/20/2015 11:13 AM	EN50731 1 Ea PL2 STP Pann	EN50731.1
Link-0054	10.1	10/20/2015 11:10 PM	ISO Ea PL2 STP Pann	ISOIEC 11801.2
Link-0055	10.2	10/20/2015 11:05 PM	ISO Ea PL2 STP Pann	ISOIEC 11801.2
Link-0056	10.4	10/20/2015 11:08 PM	ISO Ea PL2 STP Pann	ISOIEC 11801.2
Link-0057	10.4	10/20/2015 11:05 PM	ISO Ea PL2 STP Pann	ISOIEC 11801.2
Link-0058	10.4	10/20/2015 11:03 PM	ISO Ea PL2 STP Pann	ISOIEC 11801.2

New Permanent Link (PL) adapter

Operates in the smallest enclosures

The PL adapters use high performance, ultra-flexible cable that allows them to be used in confined spaces without damaging the PL adapter or the outlet being tested.



Compatible with all RJ45 cabling systems

New PL adapters feature centered connectors to ensure compatibility with all brands of Cat6A/ISO Class E_A cabling solutions.

Field replaceable tips that reduce downtime and maintenance costs

New PL adapters reduce down time and lower maintenance costs with field replaceable RJ45 tips that eliminate the need to replace the complete adapters.

To reduce costs the PL adapter tips provide almost three times as many insertions than a regular patch cord before tip replacement is required.

Through innovative design, the entire worn plug assembly is replaced with a completely new plug, contact and locking mechanism.

	IDEAL Networks' PL adapter tip (independently verified)	Regular RJ45 patch cord plug rated by ISO/TIA standards
Number of insertions before contacts are worn and replacement is required	2,000	750

The PL adapter tips can be changed in minutes with 3 simple steps shown below.



Step 1

Remove screw



Step 2

Slide off the old tip and replace with a new one

Step 3

Replace screw

Send test data from anywhere using the free app



Step 1

Test

- Set up project
- Perform autotest on copper/fiber cabling

Step 2

Connect & Send

- Activate the LanTEK III wireless hotspot
- Connect your mobile device with the IDEAL AnyWARE app.
- Transfer test data to your mobile device
- Send data using email or your preferred file sharing app.

Step 3

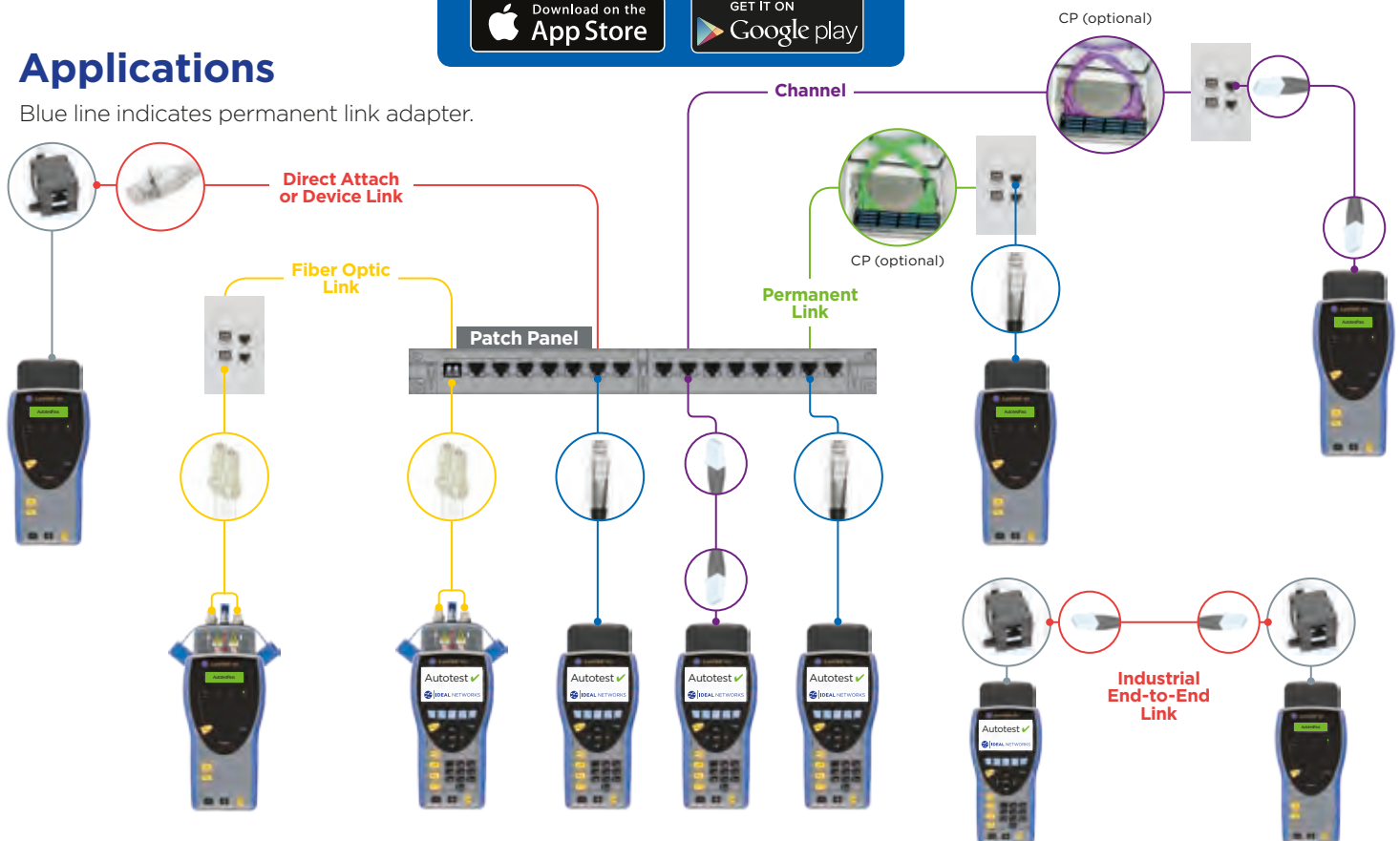
Create PDF reports with IDC

- Receive test data on your PC via email or file sharing method.
- Analyze and process data
- Create PDF reports

Download the FREE app today

Applications

Blue line indicates permanent link adapter.



LanTEK III

Independently verified

Accuracy verified by Intertek



Rugged design

Rubberized housing, protected screen and protected measurement port

Share test data

Provides mobile device connectivity using the USB Wi-Fi adapter and free IDEAL AnyWARE app



Long life battery

18 hours continuous use in the field

Replaceable Cat. 6A permanent link adapter tips

Reduces cost of ownership. Centered connectors provide minimal tolerance and are compatible with all RJ45 twisted pair cabling connectors (optional)



Troubleshooting

Time Domain Return Loss (TDRL) and NEXT (TDX) to locate hidden connections, splices and cable faults

Tone generator on both test units

Ability to identify and trace cables with a compatible amplifier probe (62-164)

Autotest on both test units

Comprehensive test results within seconds. Allows one person testing

Wiremap test button

Shortcut to quickly access wiremap results

Talk Set

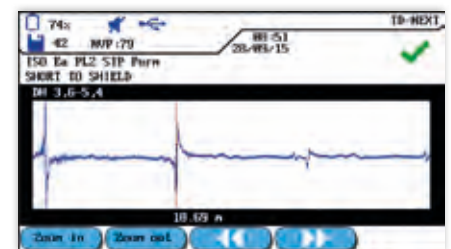
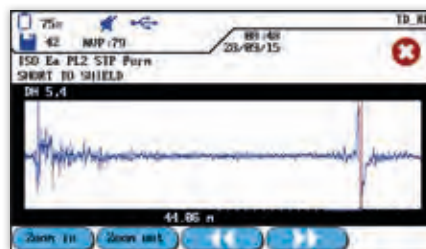
Talk to a colleague over copper or fiber links



New troubleshooting features that save time and money

Should a cable prove to be faulty, troubleshooting is easy with the introduction of Time Domain Return Loss (TDRL) and Time Domain Near End Cross Talk (TDNEXT) measurements. These additional features help locate hidden connections, splices and cable faults and can save many hours previously spent troubleshooting problems on the job.

TDX - Example: Consolidation Point



FiberTEK III

Troubleshooting

Red laser light source to visually pinpoint faults and locate fiber ports

Protected test ports

Attached covers protect ports, minimize contamination and will not be misplaced

Supports all common connector types

SC, FC, ST adapters included. LC adapters optional

Certification

Tier 1 certification of single-mode and multimode fiber optic cabling

Simplified bi-directional measurements

Eliminates process of manually merging directional tests into one record

Encircled Flux compliance

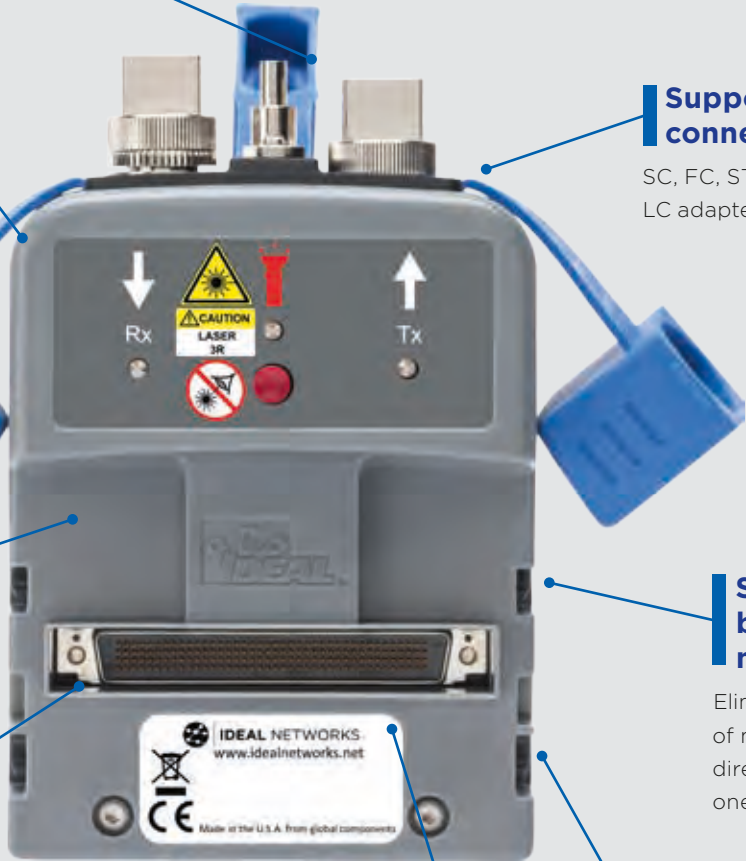
Enables compliance to the new 2016 fiber standards IEC 14763-3 and ANSI/TIA- 526-14-C (optional accessory – see back page for details)

Field calibration

Allows 1 and 3 jumper field calibration methods to ensure accuracy and compliance to IEC and ANSI/TIA standards

Complies with all international standards including TIA, ISO/IEC

See website for full details

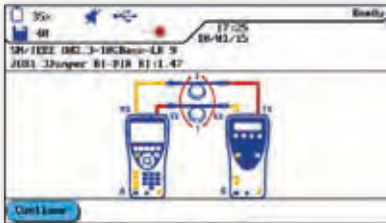


Fiber certification wizard to simplify setup and testing



Setup Wizard

Select field calibration (1-Jumper|3-Jumper) and measurement modes (Loopback|Normal), (Uni-Directional|Bi-Directional).



Auto-test

Perform auto-tests using the intuitive graphical interface to reduce mistakes and ensure accurate certification results.



Review Results

Tier 1 certification results display:

- ISO/TIA/IEEE test standard
- Pass/Fail result
- dB loss of each fiber at each wavelength
- dB loss in each direction (when testing bi-directionally)
- Fiber link length
- dB margin / headroom

LanTEK III

Certifier for
Copper Cabling



Ordering information

Part No.	Kit Contents
R161001	LanTEK III-500MHz - (test adapters to be ordered separately) Includes 500 MHz cable certifier. TIA/EIA category 6A/ISO Class E _A .
R161002	LanTEK III-1000MHz - (test adapters to be ordered separately) Includes 1000 MHz cable certifier. TIA/EIA category 7A/ ISO Class F _A .
Additional content: LanTEK III display/remote handsets, Li-ion battery (2), universal power adapter (2), USB cable, headset (2), hanging strap (2), quick reference guide, carry case, USB Wi-Fi adapter	
R161003	LanTEK III-500MHz - (including PL adapters) Includes 500 MHz Cable Certifier. TIA/EIA Category 6A/ ISO Class E _A .
R161004	LanTEK III-1000MHz - (including PL adapters) Includes 1000 MHz Cable Certifier. TIA/EIA Category 7A/ ISO Class F _A .
Additional content: LanTEK III display/remote handsets, Li-ion battery (2), universal power adapter (2), USB cable, headset (2), hanging strap (2), quick reference guide, carry case, USB Wi-Fi adapter, permanent link adapter - R161051 (2)	
TRADE161003	Trade-In of any CAT5 (and higher) cable tester to a LanTEK III-500MHz
TRADE161004	Trade-In of any CAT5 (and higher) cable tester to a LanTEK III-1000MHz

Optional adapters and accessories for LanTEK III

Part No.	Description
R161051	LT III-CAT6A RJ45 permanent link adapter (single)
R161052	LT III-CAT5e/6 RJ45 channel adapter (single)
R161053	LT III-CAT6A RJ45 channel adapter (single)
R161054	LT III-CAT7A TERA universal link adapter (single)
R161055	LT III-CAT7A EC7 universal link adapter (single)
R161056	LT III-CAT7A GG45 universal link adapter (single)
R161057	LT III-Coax adapter (single)
R161063	LT III-Coax calibration cable (single)
R161050	LT III-CAT6A PLA replacement tips (pair)
R160050	LT III-Industrial Ethernet kit
LANTEK10GBKIT	Alien crosstalk kit suitable for LanTEK II and LanTEK III cable certifiers



Call Us 1.877.571.7901

FiberTEK III

Certifier for
Fiber Cabling



Ordering information

Part No.	Kit Contents
R164005	FiberTEK III-MM LED Kit - Includes two multimode FiberTEK III modules, lockable semi-rigid carrying case, SC, FC, ST adapters for modules (2 ea.), SC-SC patch cords, 6x 50µm MMF compliant to ISO/IEC 14763-3 standard, quick reference guide.
R164006	FiberTEK III-SM Laser Kit - Includes two single-mode FiberTEK III modules, lockable semi-rigid carrying case, SC, FC, ST adapters for modules (2 ea.), SC-SC patch cords, 6x 9µm SMF compliant to ISO/IEC 14763-3 standard, quick reference guide.
R164007	FiberTEK III-MM LED & SM Laser Kit - Includes two multimode FiberTEK III modules, two single-mode FiberTEK III modules, lockable semi-rigid carrying case, SC, FC, ST adapters for modules (2 ea.), SC-SC patch cords, 6 x 9µm SMF, 6 x 50µm MMF compliant to ISO/IEC 14763-3 standard, quick reference guide.

FiberTEK III modules are compatible with LanTEK II.

Optional accessories for FiberTEK III

Part No.	Description
R164060	FT III-Set of SC, FC and ST screw-on adapters
R164050	FT III-Encircled Flux 50/125µm cable SC - SC
R164051	FT III-Encircled Flux 50/125µm cable SC - LC
R164063	FT III-Carrying Case (Single)

For a full list of accessories, please visit www.idealnetworks.net.



Sapphire Care Plans for LanTEK II/III

Part No.	Description
SCP1YRN	1 year - 10% discount included *
SCP2YRN	2 years - 10% discount included*
SCP3YRN	3 years - 10% discount included*
SCP1YR	1 year
SCP2YR	2 years
SCP3YR	3 years
Included: Free repairs, free annual calibration, free loan tester during repairs and calibration, free shipping, free firmware updates, free technical support, free replaceable wear parts. Terms and conditions apply.	

* when purchased within 60 days of purchasing a new LanTEK III.

For details, please visit: www.idealnetworks.net under LanTEK III accessories.



IDEAL NETWORKS

IDEAL INDUSTRIES NETWORKS DIVISION
1375 Park Ave., Sycamore, IL 60178 U.S.A
Phone: 800-947-3612 | +1 815-895-5181
Email: contactus@idealnetworks.net

www.idealnetworks.net



A subsidiary of
IDEAL INDUSTRIES, INC.



Specification subject to change without notice. E&OE
Printed in UK. P-5343 09/17
© IDEAL Networks 2017

Publication no.: 161815, rev. 2

Apple and the Apple logo are trademarks of Apple Inc., registered in the U.S. and other countries. App Store is a service mark of Apple Inc.

Android is a trademark of Google Inc.

All Rights Reserved. IDEAL, IDEAL NETWORKS, LanTEK, FiberTEK and the IDEAL AnyWARE logos are trademarks or registered trademarks of IDEAL INDUSTRIES LIMITED or IDEAL INDUSTRIES, INC.