

EZ USB for Windows and Mac

User's Guide



205 Westwood Ave, Long Branch, NJ 07740

Phone: 866-94 BOARDS (26273) / (732)-222-1511

Fax: (732)-222-7088 | E-mail: sales@touchboards.com

General Description

EZ USB is an easy-to-use software application supporting Windows and Mac operating systems. It allows you to view PC/MAC content over a standard USB 2.0/3.0 connection on an EZ USB equipped display. View a mirror image of your computer's screen or use it as an extended monitor to keep your desktop private.

Features

- Software switch for USB Mass Storage to USB Display device
- Full Screen Display Mirror and Extended Monitor over USB
- Simultaneous audio over USB (WIN7 and higher)
- USB2.0 High Speed Transfer
- Supports multiple operating systems: Windows XP 32/64bit SP3 (Professional or above), Windows Vista 32/64bit SP2 (Home premium and above), Windows 7 32/64bit SP1 (Home premium and above) and Windows 8, Mac OS 10.7 and later
- Supports 4:3, 16:10 and 16:9 aspect ratios/

System Requirements

Minimum (Windows OS)

CPU	Dual Core 2 GHz or higher (ATOM not supported)
Graphic card	Intel, nVIDIA or ATI graphic card with 64MB VRAM or above
Operating System*	Windows XP SP3, Vista SP2, Windows 7 SP1 and later, Windows 8
USB	USB 2.0 High Speed

Recommended (Windows OS)

CPU	Dual Core Intel Core i5 2.4Ghz
Memory	DDR 4GB
Graphic card	256MB VRAM or above
Operating System*	Windows XP SP3, Win 7 SP1, Win 8

*Audio is not supported in Windows XP. Extended monitor is not supported in Windows 8.

Minimum (Mac OS)

CPU	Dual Core Intel Core 1.4 GHz or higher (PowerPC not supported)
Graphic card	Intel, nVIDIA or ATI graphic card with 64MB VRAM or above
Operating System	Mac OS X 10.7 and above
Recommended Models	Mac Book series and iMac series starting in 2012

Recommended (Mac OS)

CPU	Dual Core Intel Core i5 2Ghz
Memory	DDR 4GB
Graphic card	256MB VRAM or above
Operating System	Mac OS X 10.8

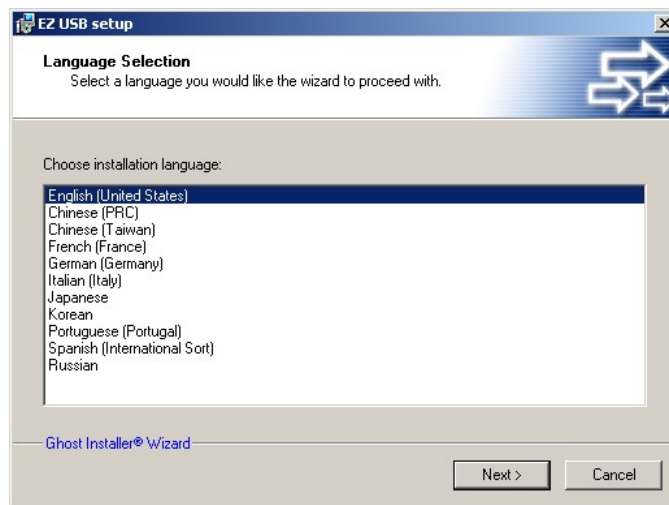
Installation (Windows)

1. Connect your USB display device.
2. Select **USB** in the EZ Suite Menu (or select **Mini-B USB** in the Source menu).

If Autoplay is enabled on your computer: EZ USB installer launches automatically.

If Autoplay is not enabled on your computer: Open the drive (the display connects as a CD-ROM drive) and run **Autoplay** to start the EZ USB Installer.

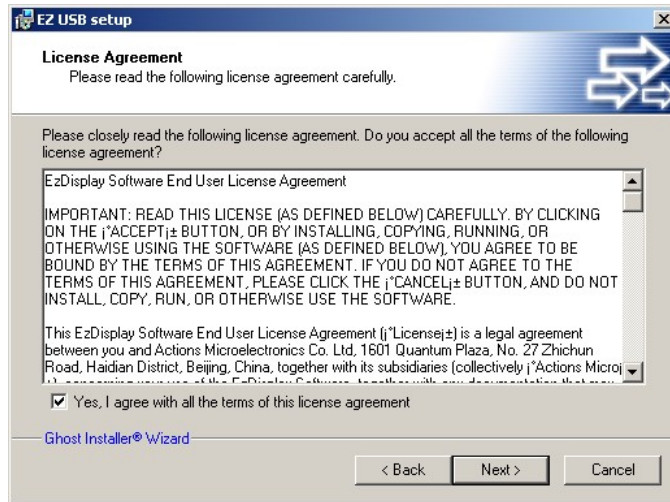
3. Select the desired language. English is default.



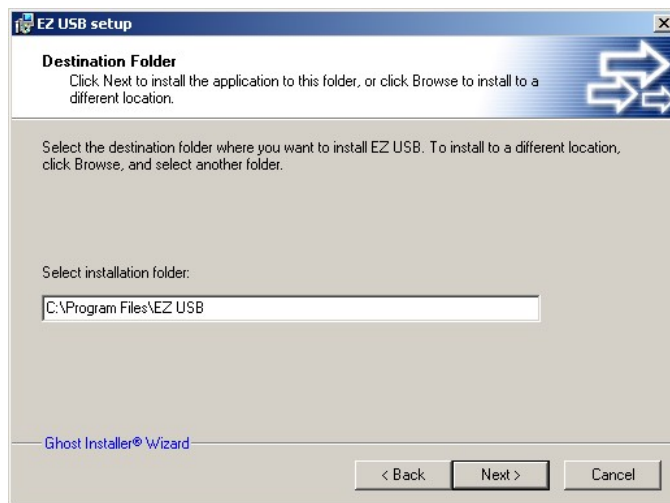
4. The Welcome screen displays. Click **Next**.



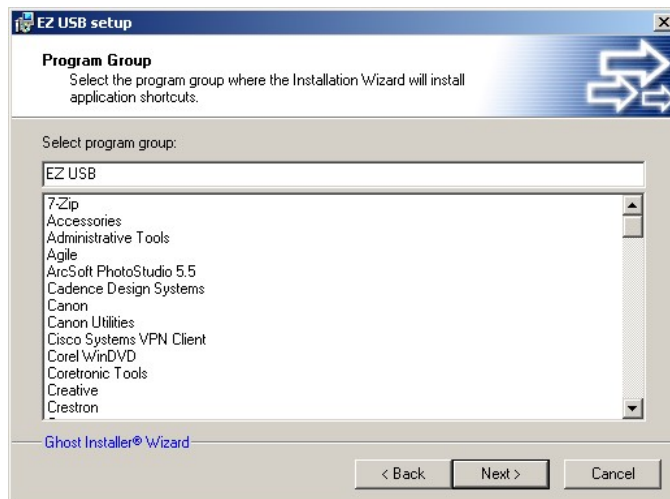
- Place a checkmark in the box next to “Yes, I agree with all the terms of this license agreement” and click **Next**.



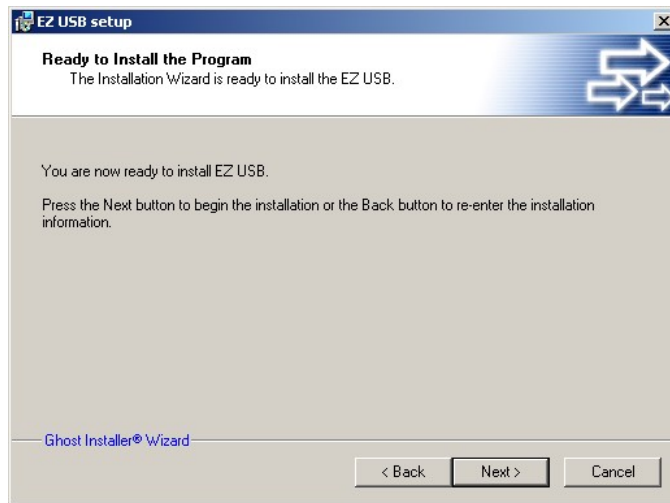
- Enter the desired destination folder (EZ USB is the default) and click **Next**.



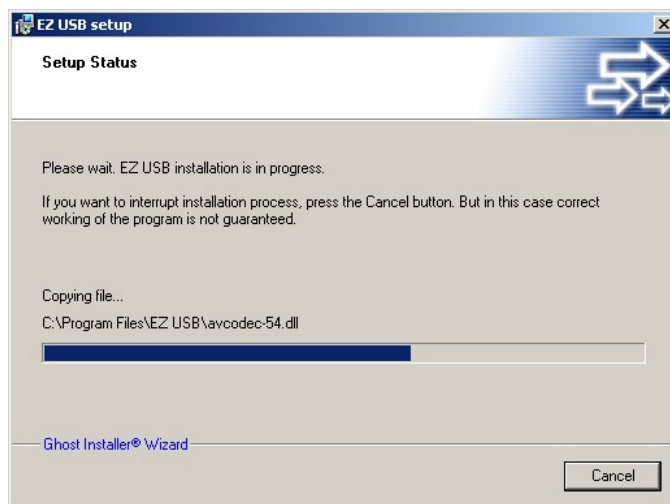
- Select the desired program group (EZ USB is the default) and click **Next**.



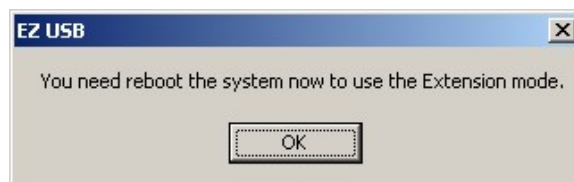
8. Click **Next**. The EZ USB installation begins.



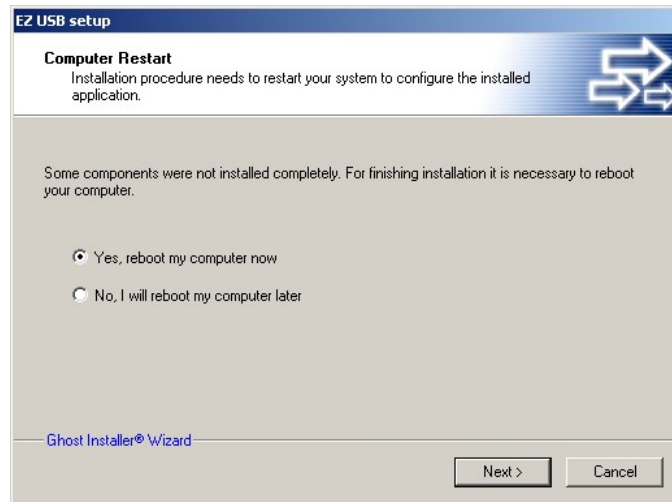
A progress bar tracks the progress of installation. **Note:** The computer display may turn black momentarily during the install process.




9. When the installation is complete, you will be prompted to reboot. Click **OK**.

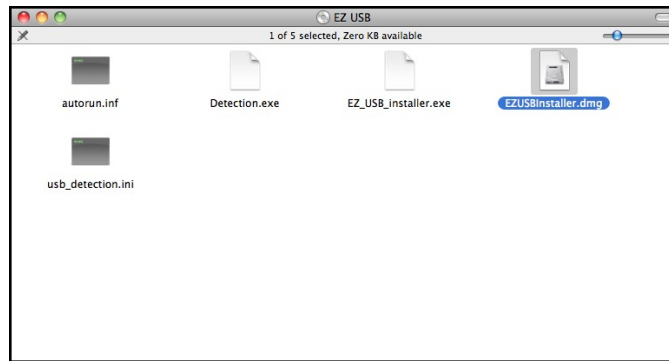


10. To use extended mode, you must select **Yes, reboot my computer now** and click **Next**. Otherwise, choose to reboot now or later, and click **Next**.

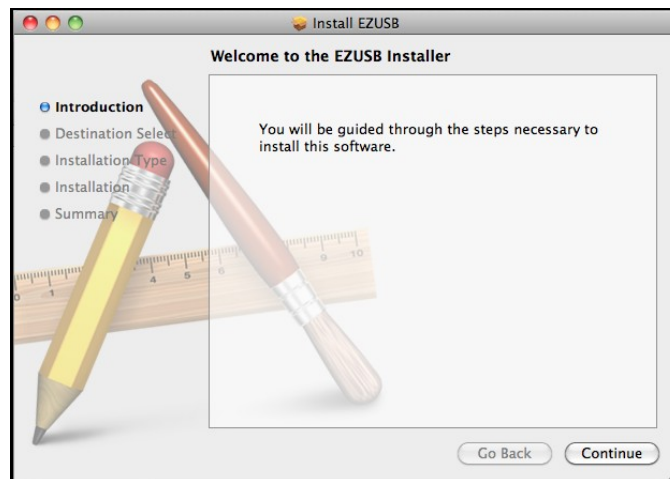


Installation (Macintosh)

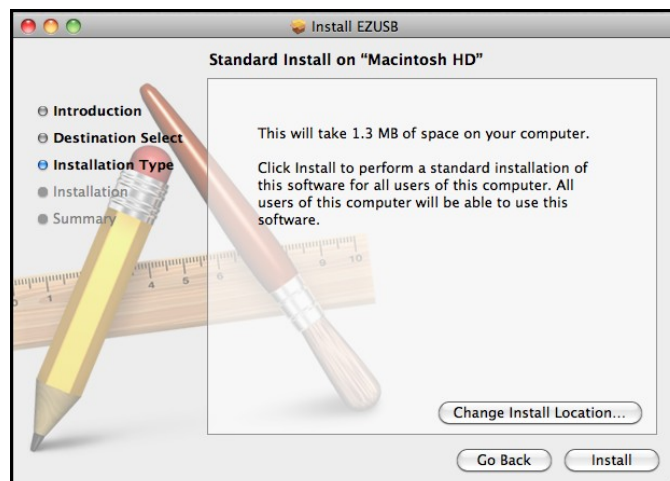
1. Connect your USB display device to your Mac.
2. Select **USB** in the EZ Suite Menu (or select **Mini-B USB** in the Source menu).
3. Open the EZ USB CD ROM  and click **EZUSBInstaller.dmg**.



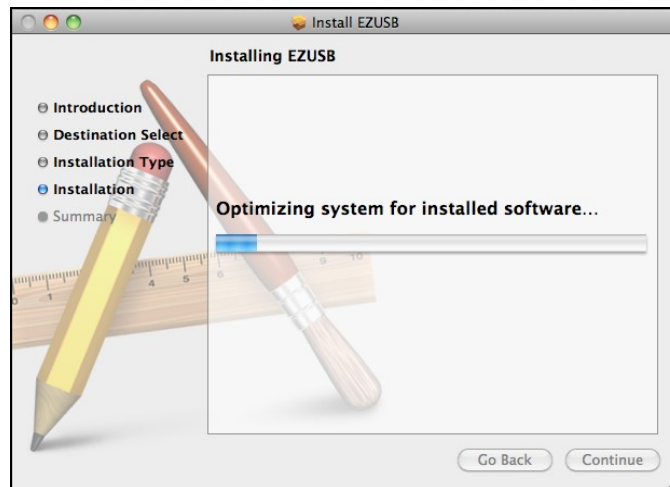
4. Click **Continue**.



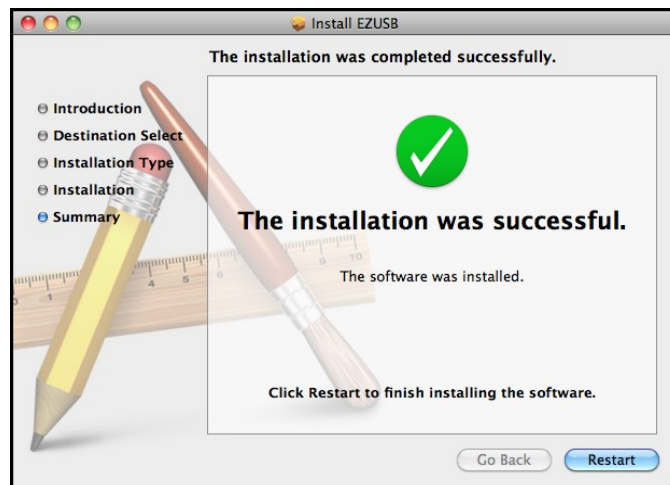
5. Click **Install** to install the application as EZUSB in the Applications folder.



A progress bar tracks the progress of installation.



6. When installation is complete, a "Success" message displays. Click **Restart** to complete the installation.



Operation

1. Connect the EZ USB display device to your PC/MAC.
2. Select **USB** in the EZ Suite Menu (or select **Mini-B USB** in the Source menu).

If Autoplay is enabled on your computer: EZ USB installer launches automatically.

If Autoplay is not enabled on your computer: Navigate to EZUSB using the Desktop shortcut , or by navigating to the program through the Start button (Windows) or Applications folder (Mac).



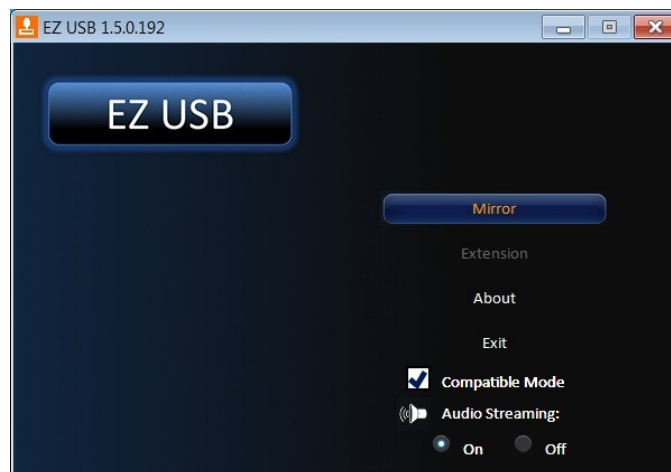
Windows Shortcut



Mac Shortcut

3. By default, the EZ USB display device displays in Mirror mode.

Note: The desktop resolution automatically adjusts to the default resolution of the USB display. If the USB display resolution is not supported by the desktop, the USB display displays in a lower resolution. **Do not change the resolution during operation.**



4. To use a secondary display, select **Extension**, then drag your application to the right side of your desktop. This prevents your actual desktop from being displayed. If you are a Mac user, navigate to System Preferences>Display and select the Mirror/Extension mode. (Note supported in Win8.)
5. If you will be viewing video content from multimedia players that use hardware video acceleration, such as Windows Media Player, select **Compatible Mode**.
6. Click **Exit** to stop viewing over USB. **Note:** If the device is unplugged, the software will automatically close.

Troubleshooting

Can I run EZ Display without connecting to a device? No, you must connect to an EZ USB device in order to run the EZ USB software.

Why can't I see video playback from the Windows Media Player? The Windows Media Player automatically uses graphic card hardware acceleration. If you encounter this problem, select **Compatible Mode**.

When I play a video file in Windows Media Player, why can't I drag it to the USB extended display? If you are using Windows 7 or Vista, you cannot drag the Windows Media Player to the extended display. This feature is disabled and blocked by the operating system. If you are using Windows XP, verify that you have dragged and moved the Windows Media Player completely to the USB display.

Why doesn't my DVD player work when I move it to the USB extended display? Some DVD player applications do not support video on extended display devices. Refer to the DVD player application documentation for more information.

Why can't I set the USB display device as my primary display? Some video cards bundle a utility that prevents other video cards from being set as the primary card. Disable the utility before setting your USB display device as the primary display.

Why does the extended display turn black when I switch to Extension mode? Sometimes Windows operating systems disable the extended display accidentally. Navigate to Display Properties and verify that the sub-display is enabled. If it is checked, switch to Mirror mode, then switch back to Extension mode again.

Tip: You can disable the Autorun function in Windows to prevent the pop-up dialog box from appearing after the device is enabled.



205 Westwood Ave, Long Branch, NJ 07740

Phone: 866-94 BOARDS (26273) / (732)-222-1511

Fax: (732)-222-7088 | E-mail: sales@touchboards.com