

# EZ WiFi/LAN for Mac

## User's Guide



**205 Westwood Ave, Long Branch, NJ 07740**

**Phone: 866-94 BOARDS (26273) / (732)-222-1511**

**Fax: (732)-222-7088 | E-mail: [sales@touchboards.com](mailto:sales@touchboards.com)**

EZ WiFi/LAN is a powerful program which projects your Mac's screen player to another display wirelessly. It also provides extended display capabilities, so that you can display different content in the secondary display. Up to four video sources can be displayed simultaneously.

## Features

- Full Screen Mirror and Extended Monitor wireless display
- Performance and quality settings
- Split Screen support
- Supports Mac OS 10.7 and later

## System Requirements (Mac OS)

CPU	Dual Core Intel Core I 1.4GHz or higher <i>(PowerPC not supported)</i>
Graphic card	Intel, nVIDIA or ATI graphic card with 64MB VRAM or above
Operating System	Mac OS X 10.7 and above
Recommended Models	Mac Book series and iMac series after E/2011

## Recommended System Settings (Mac OS)

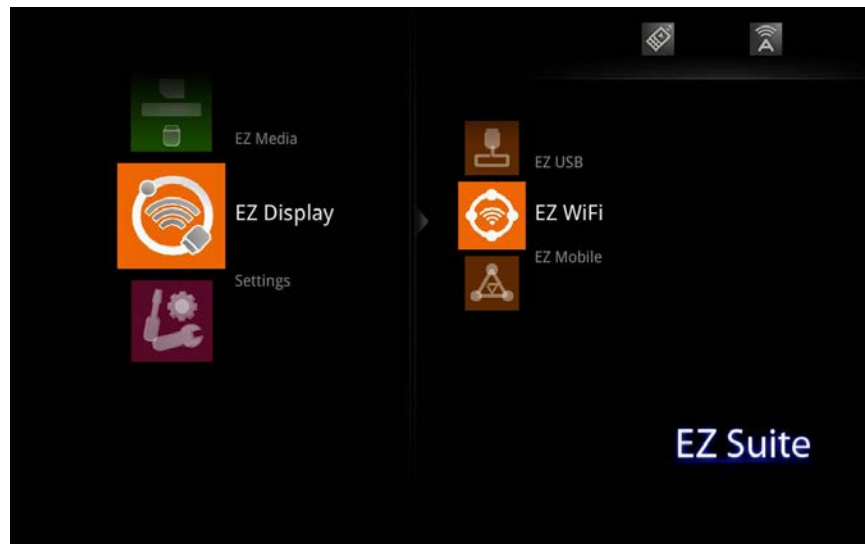
CPU	Dual Core Intel Core i5 2Ghz above
Memory	DDR 4GB
Graphic card	256MB VRAM or above
Operating System	Mac OS X 10.8
Recommended Models	Mac Book series and iMac series after E/2011

## Specifications

Display Aspect Ratio	4:3, 16:9, 16:10
OS support	Mac OS 10.7 and above
Interface	WiFi 802.11n
Display mode	<ul style="list-style-type: none"> <li>• Mirror Display</li> <li>• Extension Display</li> <li>• Performance mode</li> <li>• Quality mode</li> <li>• Split Screen</li> </ul>

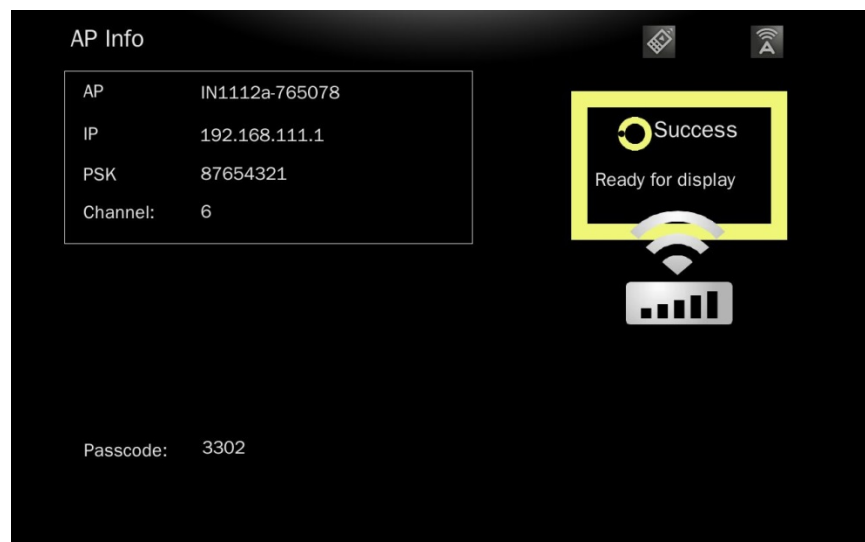
## First installation

1. On the EZ Suite display: Make sure that the USB WiFi adapter is inserted and enabled. Select EZ Display > EZ WiFi or select the USB Type A source from the source menu.



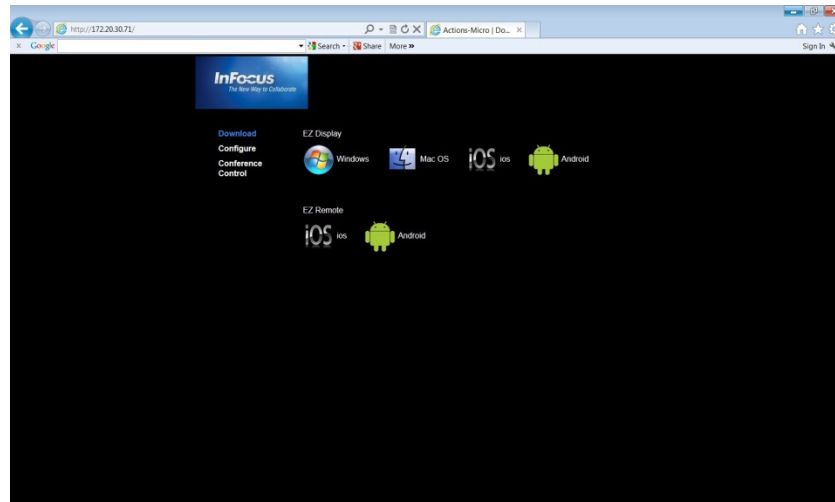
The WiFi Welcome screen displays. The display is ready to download the application and display wirelessly.

2. On the Mac, open the WiFi SSID list and select the access point indicated in the Welcome page. Enter the displayed PSK if encryption is enabled.

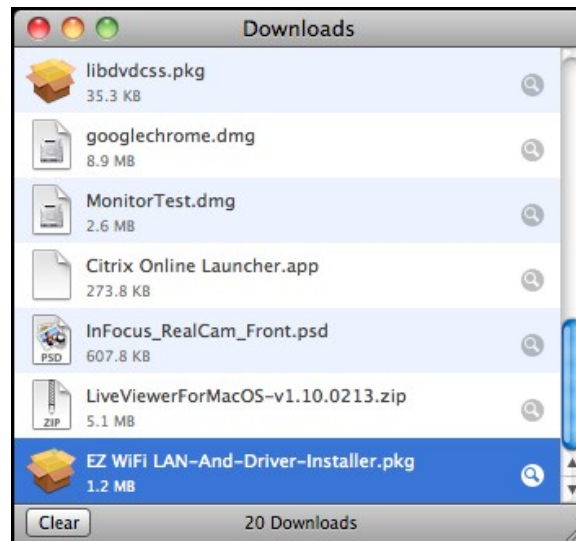


3. Open a browser and enter the IP address from the WiFi Welcome page into the address bar.

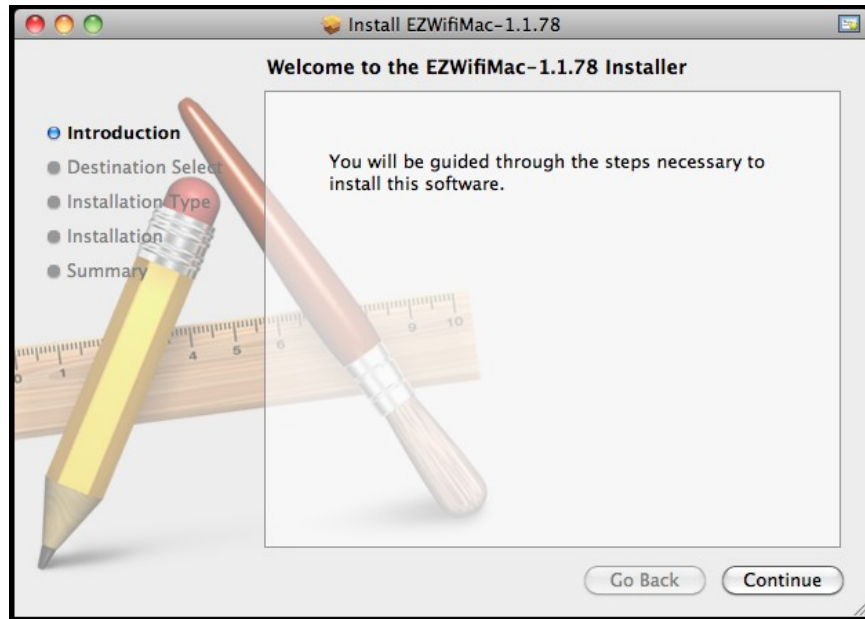
4. The Web interface of the display will open. Click the EZ Display **Mac OS** button.



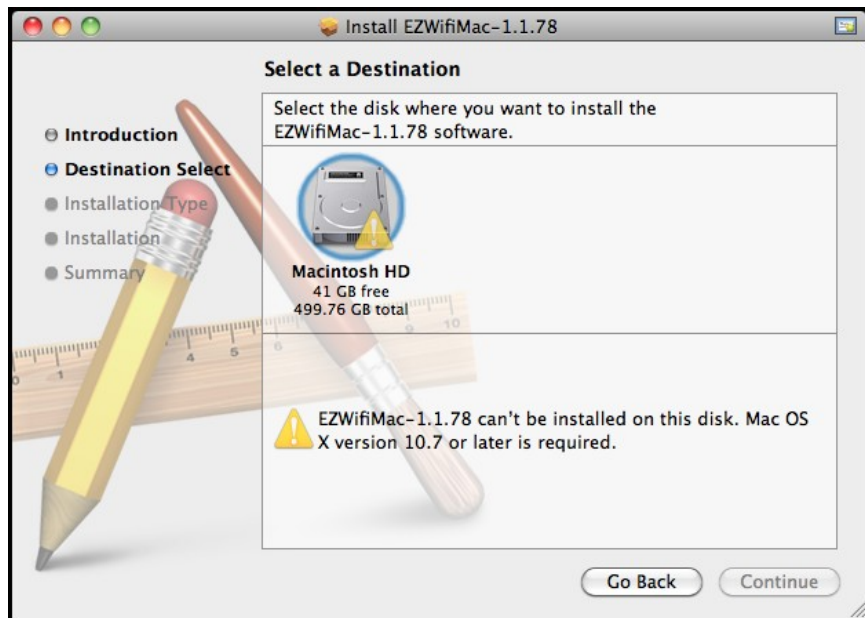
5. Download and run **EZ WiFi LAN-And-Driver-Installer.pkg**.



6. Click **Continue** to begin the installation.



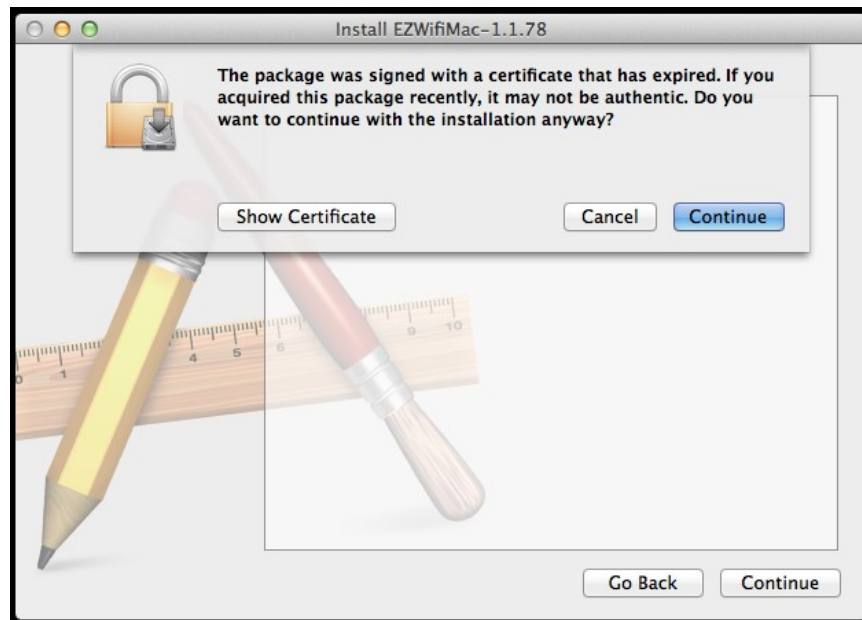
7. Click the location in which you would like EZ WiFi/LAN installed.



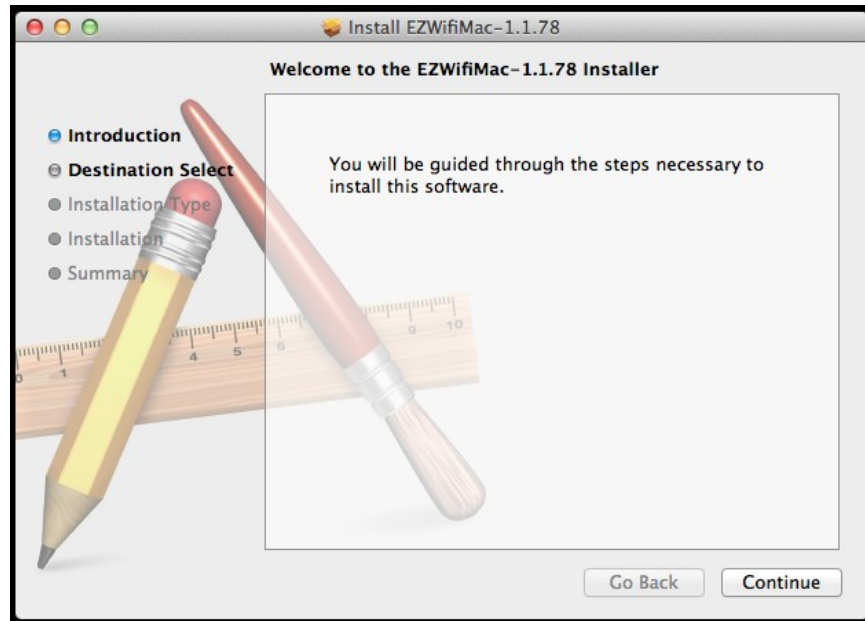
8. Click **OK** to continue the installation.



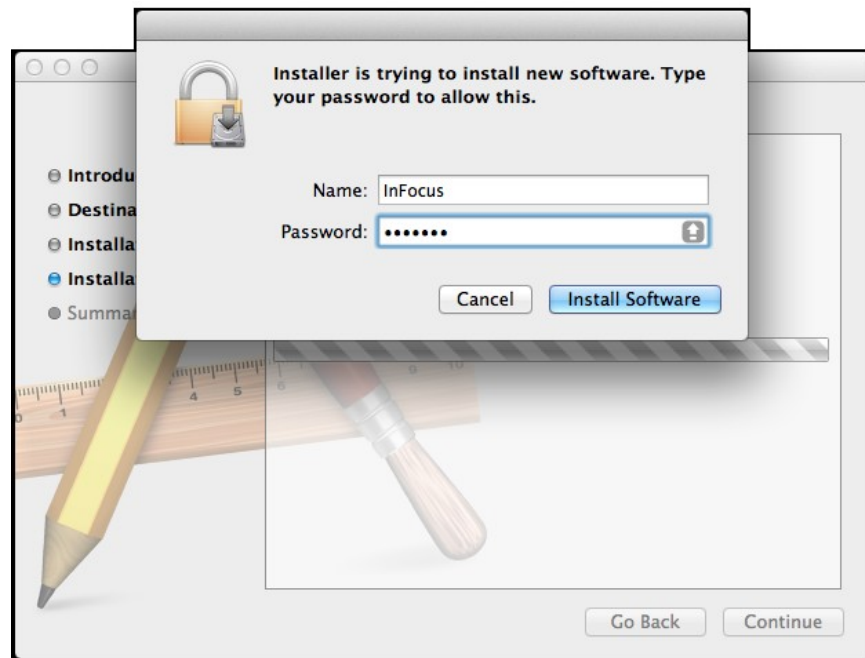
9. Click **Continue** to resume the installation.



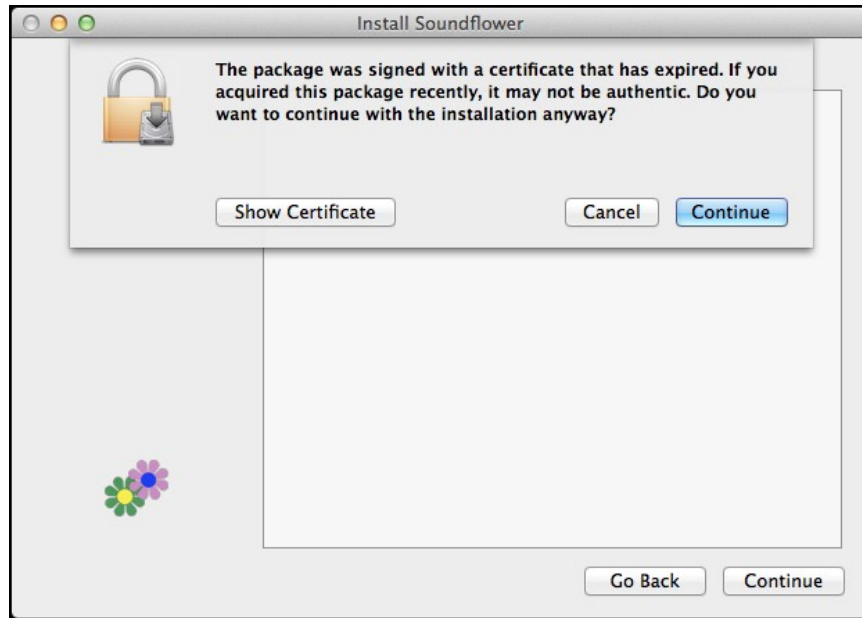
10. Click **Continue** to resume the installation.



11. Enter your Password to continue installation and click **Install Software**.



12. When EZ WiFi/LAN is installed, the Soundflower sound driver installation will begin. Click **Continue** to begin the installation of the sound driver.

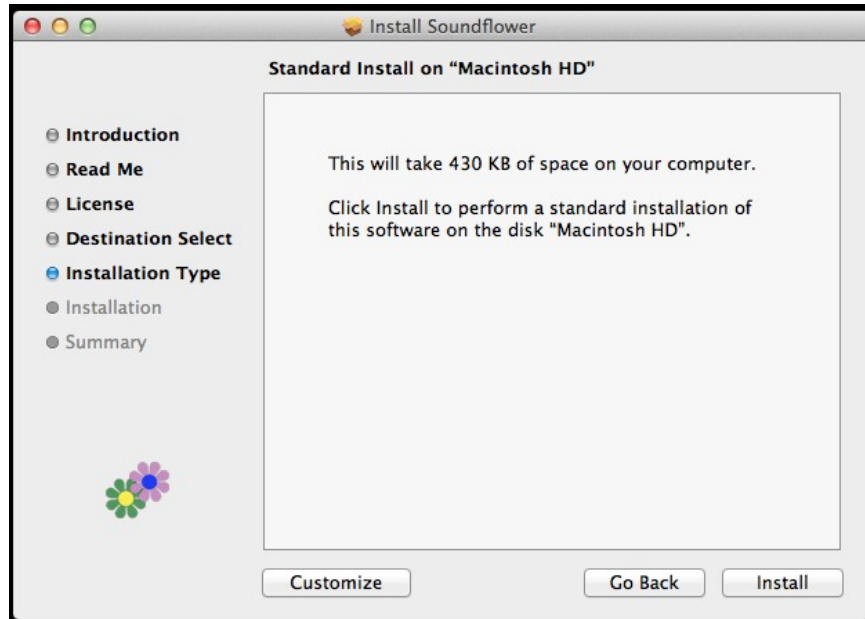


13. Click **Continue** to resume installation.

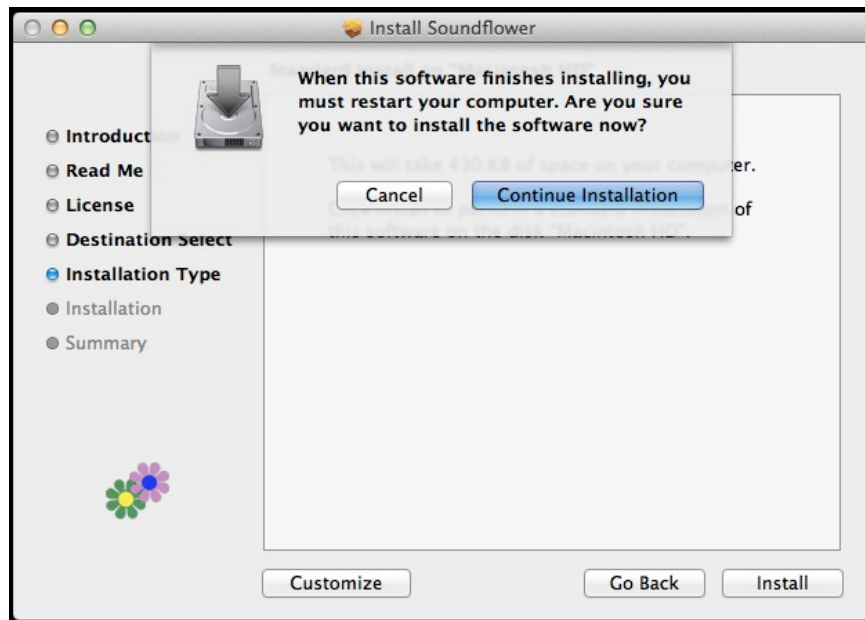




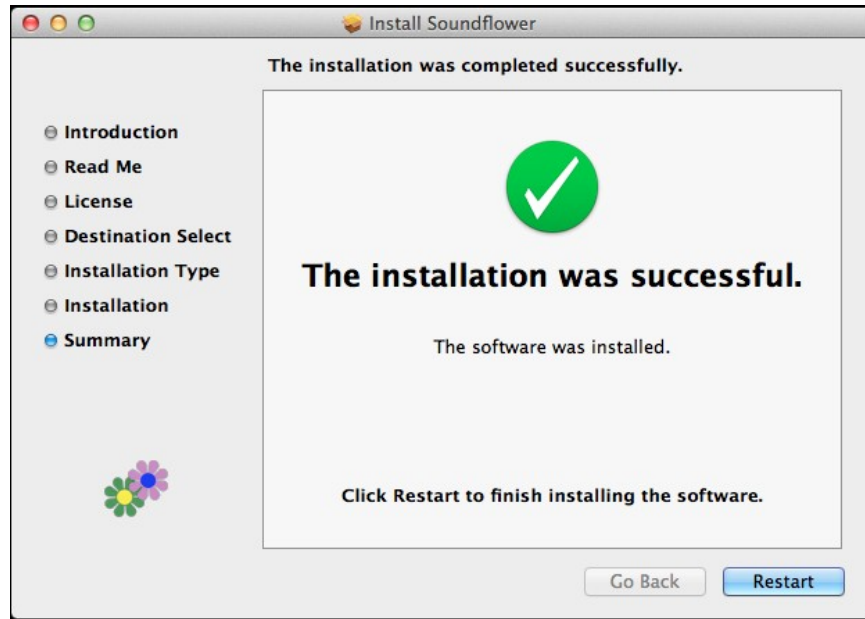
14. The sound driver will install to the same location as EZ WiFi/LAN. Click **Install** to continue.



15. Click **Continue Installation** to resume.

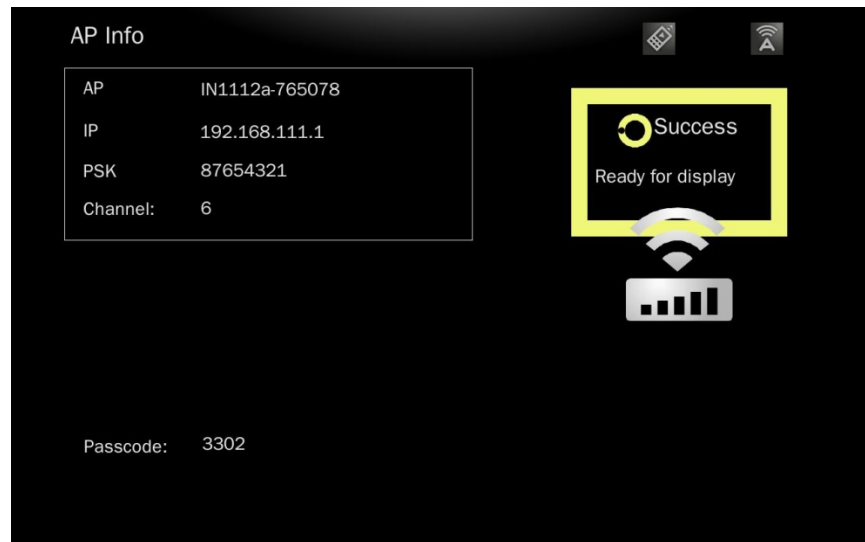


16. The Mac system needs to restart before you can use the applications. Click **Restart**.



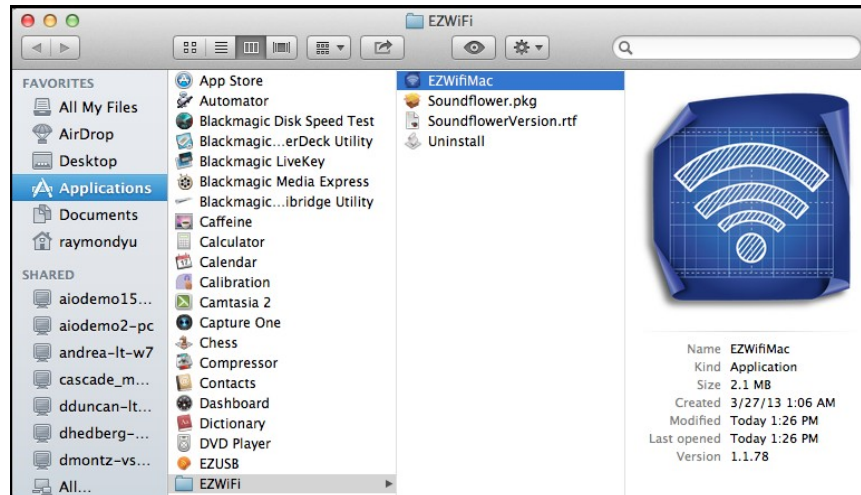
## Operation

1. Make sure EZ Suite Display is active and displaying the WiFi Welcome screen.

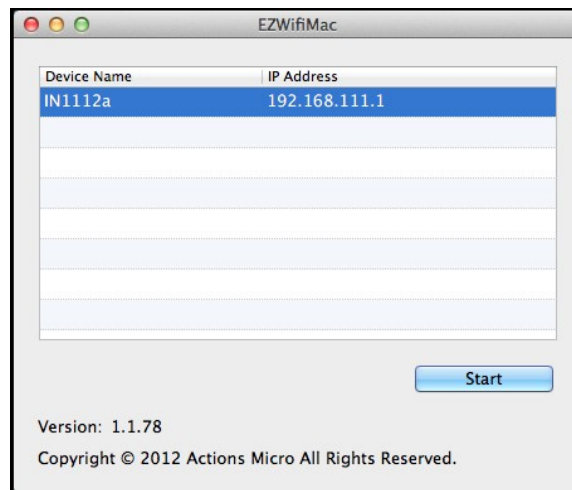


2. Establish the WiFi connection between the display device and your Mac using the SSID and encryption key (PSK) in the Welcome screen.

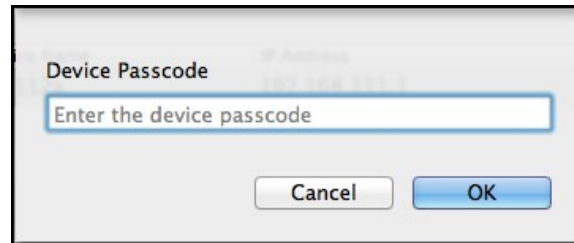
3. Find EZ WiFi>EZWifiMac in your Applications folder and double-click it. All connected display devices will be displayed.



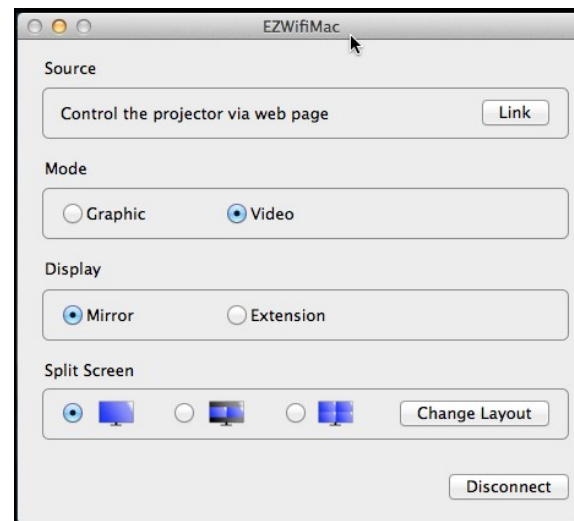
4. Select the Device Name you want to display and click **Start**.



5. Enter the 4-digit Passcode displayed on the WiFi display and click **OK**.



6. Select the Display mode (Mirror or Extension).



7. If you want to display other people's screens in a split screen mode, click **Change Layout**. Select the desired display configuration to display from more than one Mac, PC, iPad, iPhone or Android device. Up to four different sources can be displayed simultaneously.

**Note:** Do not change the resolution while EZ Display is active.

To display from an iPhone or iPad, install EZ Display from the App Store. EZ Display operation is described in a different document.