

EZ Display for Windows

User's Guide



205 Westwood Ave, Long Branch, NJ 07740
Phone: 866-94 BOARDS (26273) / (732)-222-1511
Fax: (732)-222-7088 | E-mail: sales@touchboards.com

General Description

EZ Display is a powerful program which can project your PC's screen to an EZ Suite enabled TV or projector wirelessly. You can also extend your screen to show different content on a secondary display.

Features

- Full Screen Mirror Display and Extension Mode Display
- Performance and Quality selection
- Split Screen support
- Supports Windows XP~Win8

System Requirements (Windows OS)

CPU	Dual Core Intel Core 1.6 GHz or higher (<i>ATOM not supported</i>)
Graphic card	Intel, nVIDIA or ATI graphic card with 64MB VRAM or above
Operating System	Windows XP SP3, Vista SP2, Win 7 SP1 and Win 8 (Starter versions not supported)
HDD	40MB free space

Recommended System Settings (Windows OS)

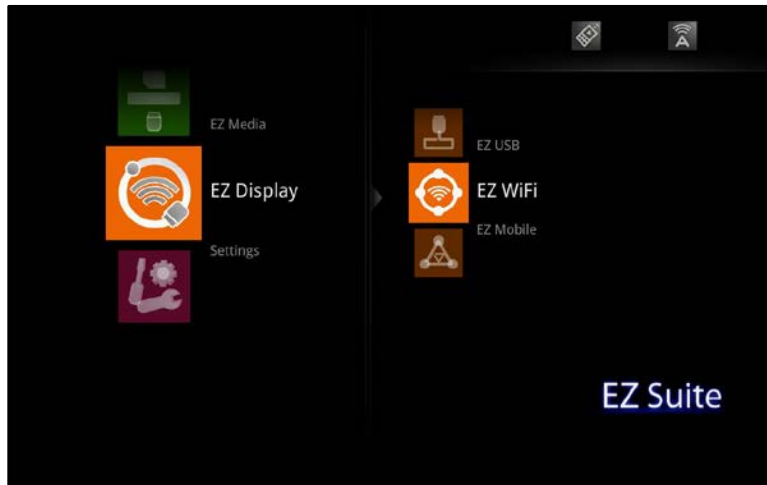
CPU	Dual Core Intel Core i5 2.4Ghz
Memory	DDR 4GB
Graphic card	256MB VRAM or above
Operating System	Windows 7 SP1

Specifications

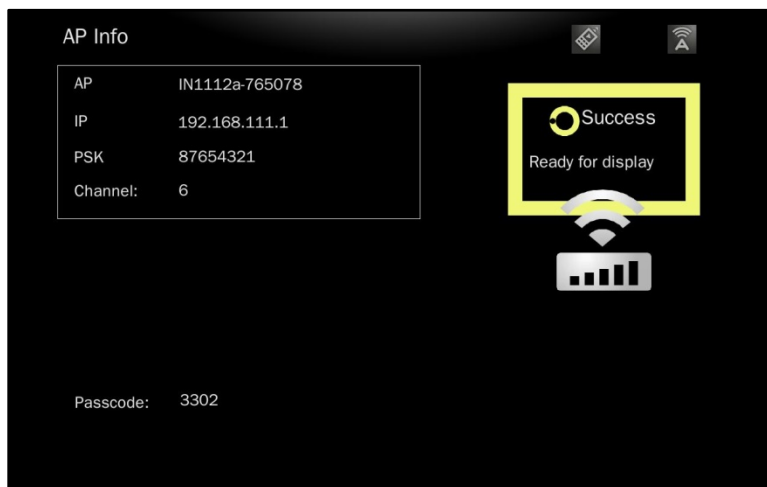
Display Aspect Ratio	4:3, 16:9, 16:10
OS support	Windows XP SP3, Vista SP2, Win 7 SP1 and Win 8 (Starter versions not supported)
Interface	WiFi 802.11n (2T2R recommended)
Display mode	<ul style="list-style-type: none">• Mirror Display• Extension Display (<i>not supported in Win 8</i>)• Performance mode• Quality mode• Split screen• Audio on/off (<i>Audio streaming is not supported by Win XP</i>)• Compatible mode
Setting	<ul style="list-style-type: none">• Split control

First installation

1. *On the EZ Suite Display:* Make sure that the USB WiFi adapter is inserted and enabled.
2. Select EZ Display > WiFi Display.

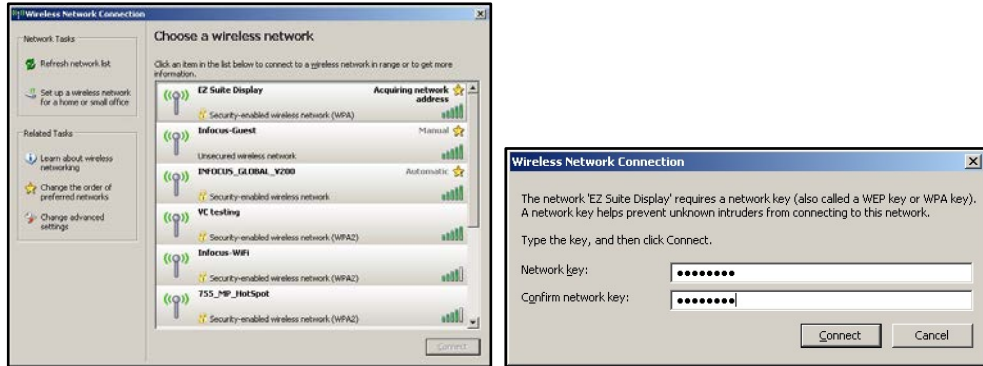


3. The WiFi Welcome page will be displayed, and the display is ready to receive wireless video.

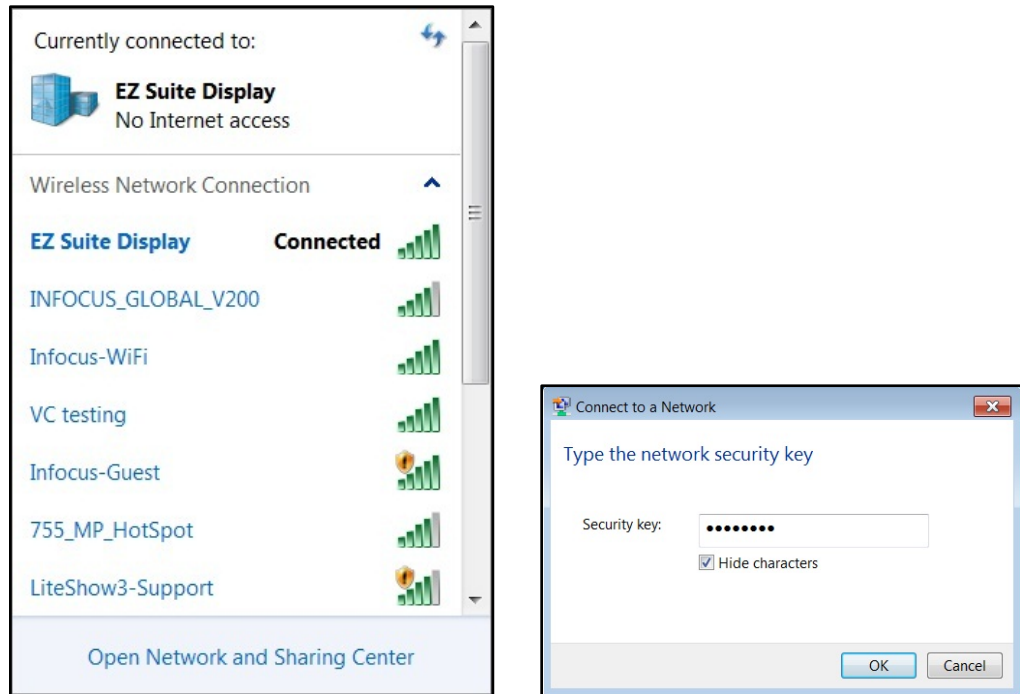


- From the PC, open the WiFi SSID list and select the access point indicated in the Welcome page. Enter the displayed PSK if encryption is enabled.

XP



WIN7



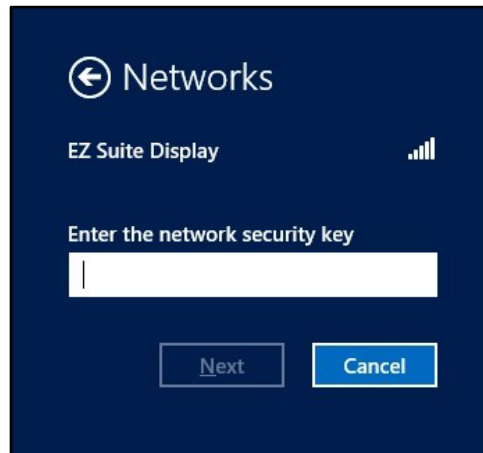
WIN8



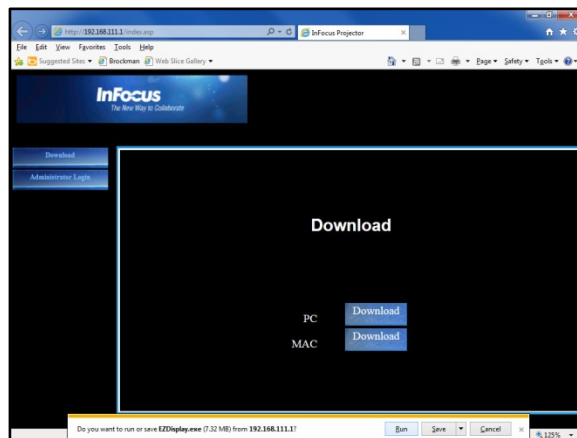
- a. Select **Connect using a security key** instead.



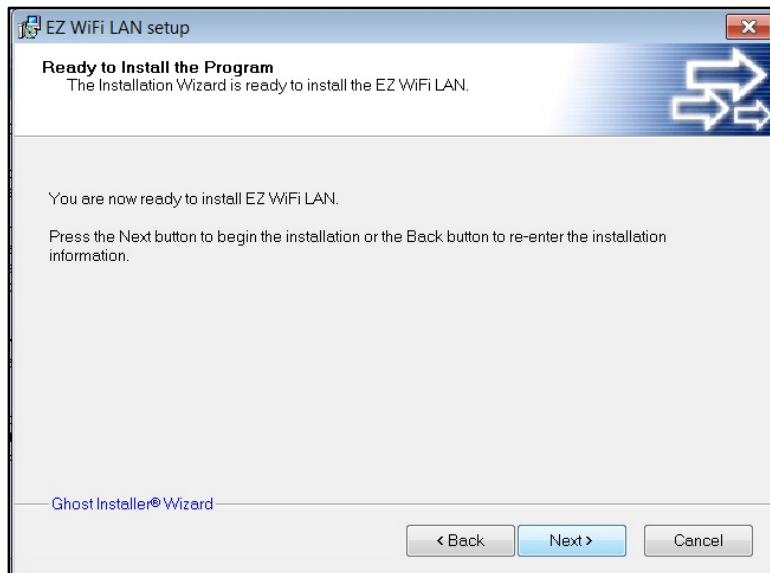
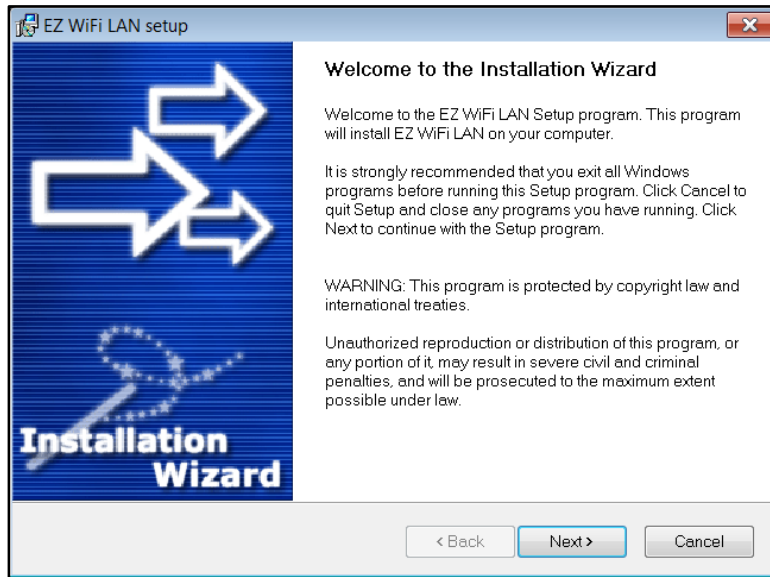
- b. Enter the PSK key shown on the EZ Suite Display.



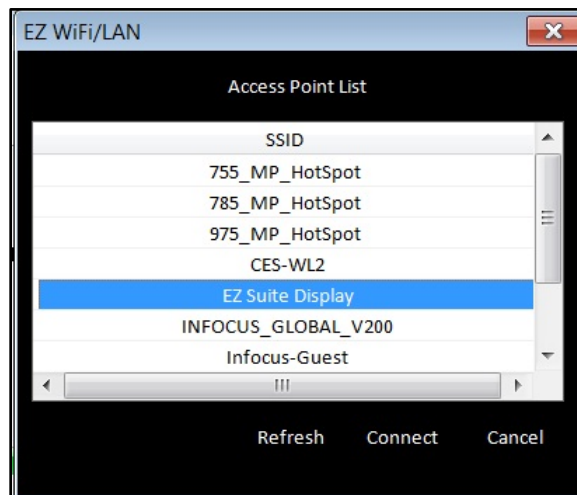
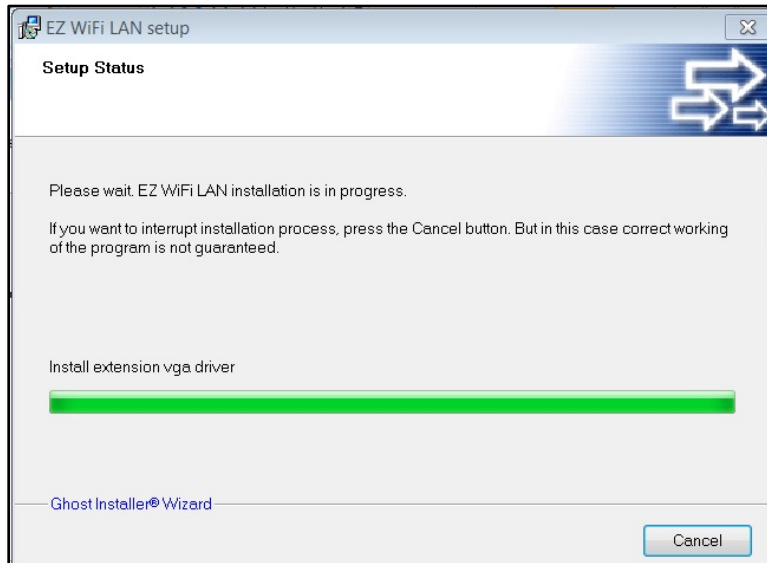
5. After connecting successfully, open a web browser and key in the IP address shown on the Welcome page (normally 192.168.111.1).
6. Click the **PC Download** button and click **Run** to download and install the EZ Display software.



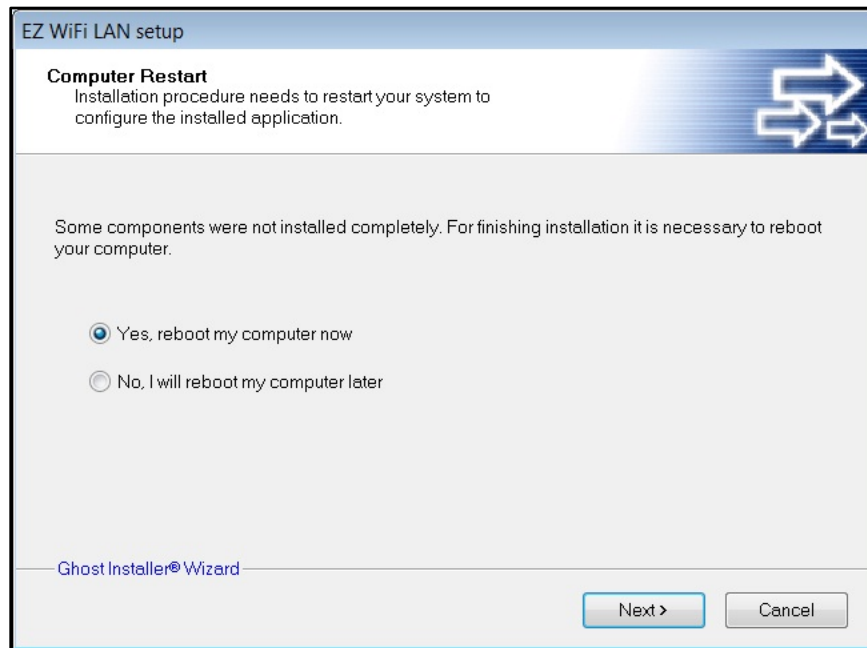
7. Follow the Wizard instructions and select **Next**.



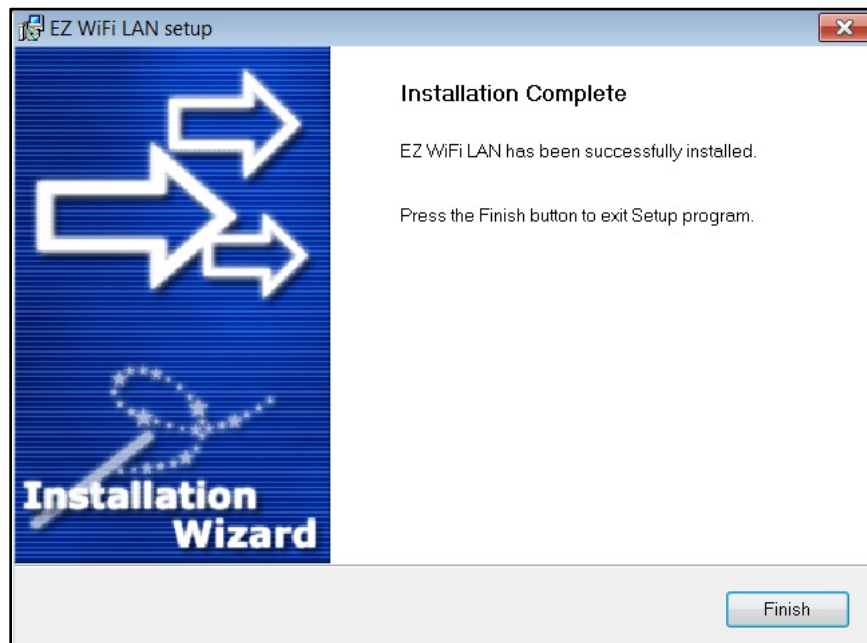
8. Click **Cancel**, if EZ Display tries to connect to the wireless display.



9. Click **Next** to reboot the computer.



10. Click **Finish**. The computer will reboot.



Operation

1. Establish the WiFi connection with the EZ Suite enabled display (refer to the above instructions).
2. Find EZ Display on your Desktop and start the application. EZ Display will search all connected display devices and list them.
3. Select the SSID of the device on which you want to display. (If only one display is detected this step is skipped.)
4. Input the 4-digit passcode shown on the Welcome page of your display.
5. The EZ Display control window will open and the PC's desktop will be displayed wirelessly.
6. Select the display mode (Mirror or Extension). If you want to display other people's screens in split screen mode, select the quadrant (1, 2, 3, 4 or L (left), R (right)) you want to display in. Up to 4 different sources can be displayed simultaneously.
7. If the Windows graphics are not displaying correctly, you can enable Compatible mode by placing a checkmark in the box. This may resolve the issue.
8. Turn on **Audio Streaming** to send audio wirelessly to your EZ Suite enabled display. (Wireless Audio not available on Windows XP.)
9. The Link feature will open the display's Web interface on your web browser.
10. Click **Exit** to disconnect from the display.

Note: Do not change the resolution while WiFi Display is active.

