

# EZ Display and EZ Remote for iOS

## User's Guide



**205 Westwood Ave, Long Branch, NJ 07740**

**Phone: 866-94 BOARDS (26273) / (732)-222-1511**

**Fax: (732)-222-7088 | E-mail: [sales@touchboards.com](mailto:sales@touchboards.com)**

## General Description

The EZ Display application wirelessly connects your iOS device display to your EZ Suite enabled InFocus projector/display through a WiFi connection. You can enhance your display with rich features like remote control, document and photo viewers, linking with your Dropbox account, web surfing, streaming video, live camera. You can annotate your documents, web pages or photos and save them for later use.

EZ Remote allows you to remotely control your EZ Suite enabled device. EZ Remote and EZ Display cannot be run at the same time.

## System Requirements

iOS	iOS 5.1 and above
Device	All iPhone models after iPhone 3GS All iPad models after iPad 2 All iPod Touch after iPod touch 4 <sup>th</sup> generation
Resolution support	iPhone: 480x320~1136x640 iPad: 1024x768~2048x1536
Storage	At least 20MB free space needed

## Features Specification

EZ Remote	Wirelessly control your EZ Display enabled device.
Streaming Doc	Supports multiple document formats <ul style="list-style-type: none"><li>• PDF: Adobe PDF 1.6 or later</li><li>• Office: MS Office 2003, 2007, 2010</li><li>• iWorks: iWorks '09 (Pages '09, Numbers '09, Keynote '09)</li></ul>
Pix Viewer	Wirelessly display photos in multiple formats <ul style="list-style-type: none"><li>• JPG, BMP, PNG</li></ul>
Live Cam	Wirelessly stream and display live the output of your Rear or Front camera
Web	Surf and display the internet wirelessly
Dropbox	Access and link y o u r Dropbox account to display documents from the Cloud. Supports multiple formats <ul style="list-style-type: none"><li>• PDF: Adobe PDF 1.6 or later</li><li>• Office: MS Office 2003, 2007, 2010</li><li>• iWorks: iWorks '09 (Pages '09, Numbers '09, Keynote '09)</li><li>• JPG, BMP. PNG</li></ul>
Media Streaming	Wirelessly stream and view movies with audio. Multiple formats supported <ul style="list-style-type: none"><li>• 3GP, AVI, DAT, M4V, MKV, MOV, MP4, MPEG, MPG, RMVB, RM, TS, VOB, WMV, XVID</li></ul>
Quad Split	Control display of up to 4 wireless video sources
Annotate	Mark up all your documents, photos, web pages, and save them as JPG

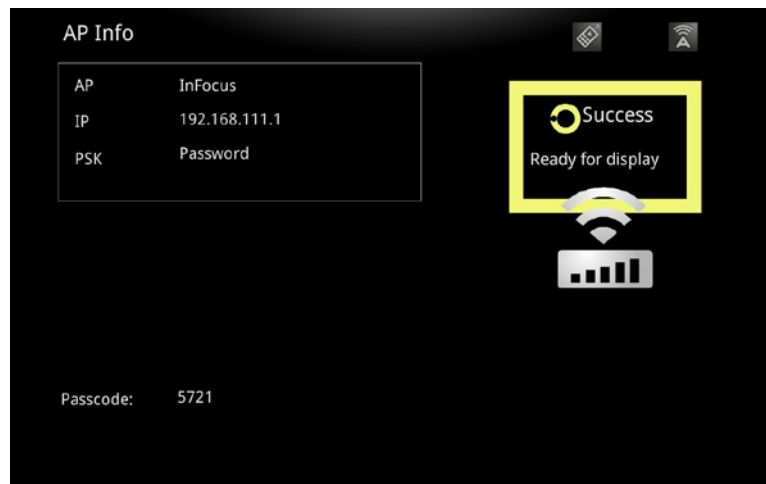
## Installation

1. Search for “EZ Display” and “EZ Remote” in the App Store.
2. If your device supports these applications, download and install them.



## Start up

A WiFi connection must be established between your iOS device to the EZ Suite enabled display. The WiFi connection needs to be displayed on the display device to retrieve the SSID, PSK and Passcode to run EZ Display. Refer to the User Manual to your EZ Suite enabled device for instructions.



**Note:** EZ Remote will control the EZ Suite enabled display without a Passcode or the WiFi info being displayed.

## EZ Remote

1. Start the EZ Remote application.
2. You will see a list of connected devices; touch the device you wish to use to enable the Remote controller.

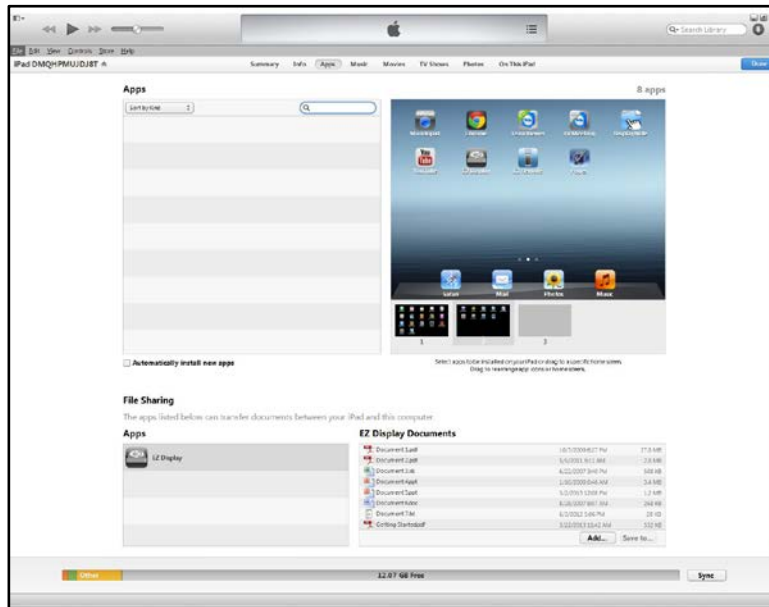


**Note:** The Skin button is reserved for future features.

- Use the arrows and **Select** button to navigate the features of your EZ Suite enabled display. Depending on the configuration of the display you can show photos, movies, and documents from internal memory, an SD card or USB storage device.

## EZ Display

- To make your documents available to the Streaming Doc and Movie functions, you must add them to File Sharing for EZ Display within iTunes on your Mac or Windows PC.
- Connect your iOS device to the computer and open the device using iTunes.
- Select **Apps** and add documents in File Sharing.



- Start the EZ Display application.
- You will see a list of connected devices; touch the device you wish to use.



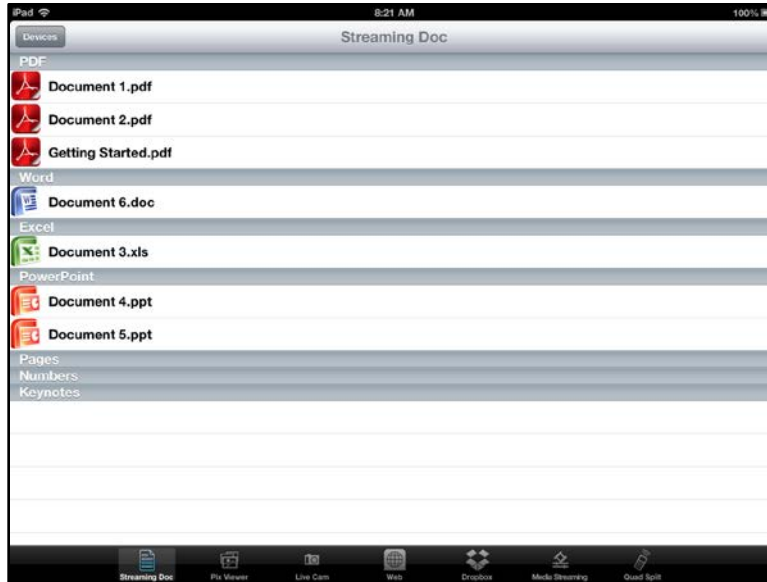
6. Enter the 4 digit Passcode shown on your TV/Monitor/Projector.



7. After entering the correct Passcode, you will enter Streaming Doc.

## Streaming Docs

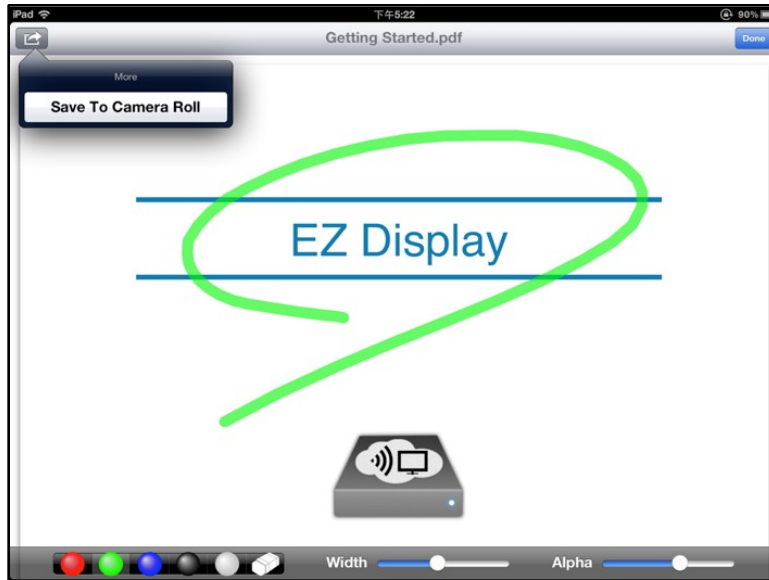
1. PDF, MS Office, and iWorks files are displayed by type. Touch the desired document to display it.



2. Navigate through the document by touch.
3. Zoom in and zoom out, or double-tap to return to the best fit.
4. To annotate:
  - a. Touch the **Pencil icon** in the upper right corner.
  - b. Select color, line width, and Alpha (transparency).
  - c. Then simply write or draw directly on your iOS device screen.



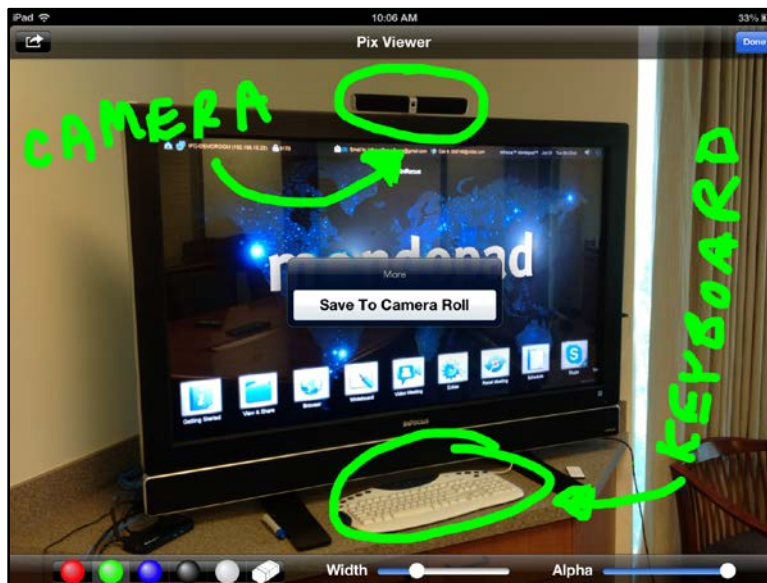
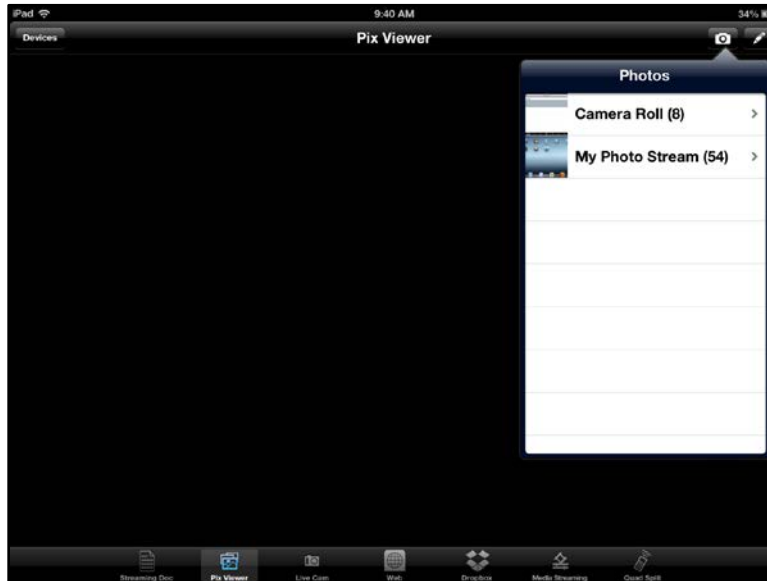
5. To save the annotated image, touch the **Save icon** on the top of the screen.





## Pix Viewer

1. Touch the **Pix Viewer icon** in the function menu.
2. Touch the **Camera icon** to select which photos to view.

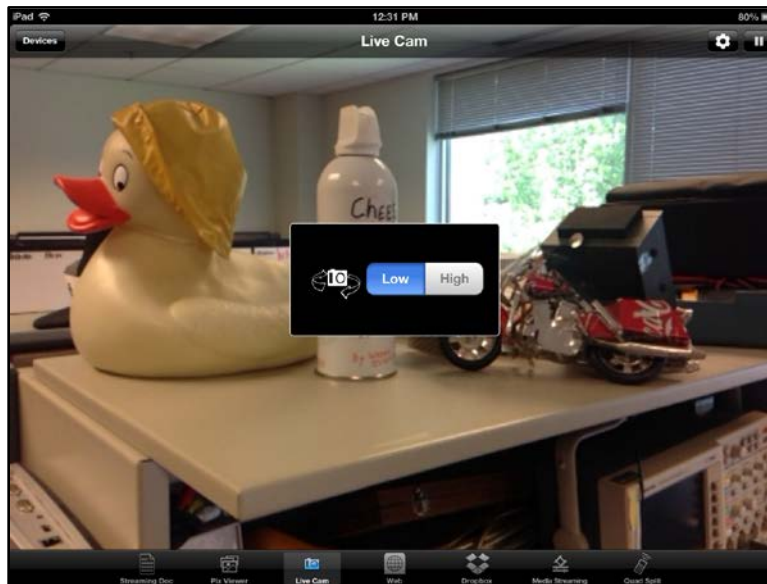


3. Zoom in and zoom out, or double-tap to return to the best fit.
4. To annotate:
  - a. Touch the **Pencil icon** in the upper right corner.
  - b. Select color, line width, and Alpha (transparency).
  - c. Then simply write or draw directly on your iOS device screen.
5. To save the annotated image, touch the **Save icon** on the top of the screen.

## Live Cam

Live Cam will real-time display what your camera sees.

1. Switch from the rear to the front camera by touching the camera icon.
2. Touch **Low** or **High** to adjust image quality.



3. Zoom in and zoom out, or double-tap to return to the best fit.
4. To annotate:
  - a. Touch the **Pencil icon** in the upper right corner.
  - b. Select color, line width, and Alpha (transparency). Then simply write or draw directly on your iOS device screen.



5. To save the annotated image, touch the **Save icon** on the top of the screen.

## Web

*This feature requires an internet connection, the WiFi on the EZ Suite enabled display must be configured as a Client device on a wireless network connected to the internet.*

1. Touch the **Streaming Web icon** in the function menu and the default home page ([www.google.com](http://www.google.com)) will be displayed.
2. Enter the desired URL in the window to select a web page to view.

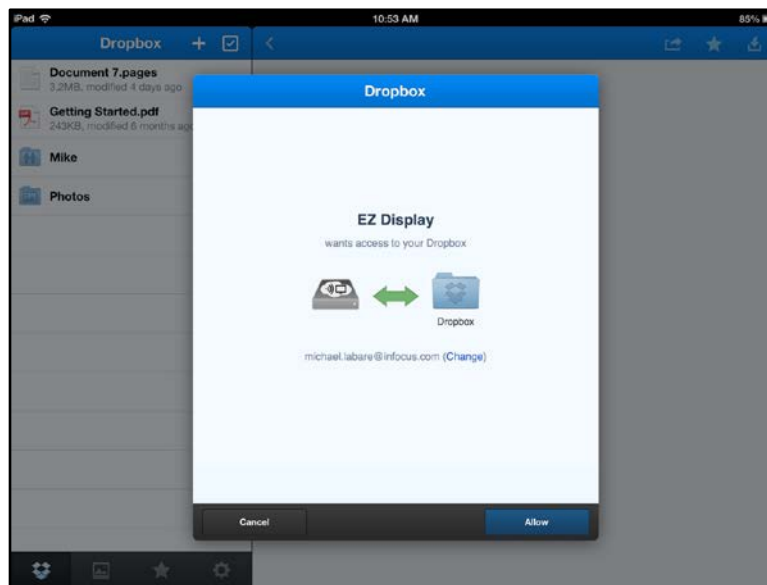


3. Refresh, Previous and Next page navigation are available on the bottom tool bar.
4. To annotate:
  - a. Touch the **Pencil icon** in the upper right corner.
  - b. Select color, line width, and Alpha (transparency).
  - c. Then simply write or draw directly on your iOS device screen.
5. To save the annotated image, touch the **Save icon** on the top of the screen.

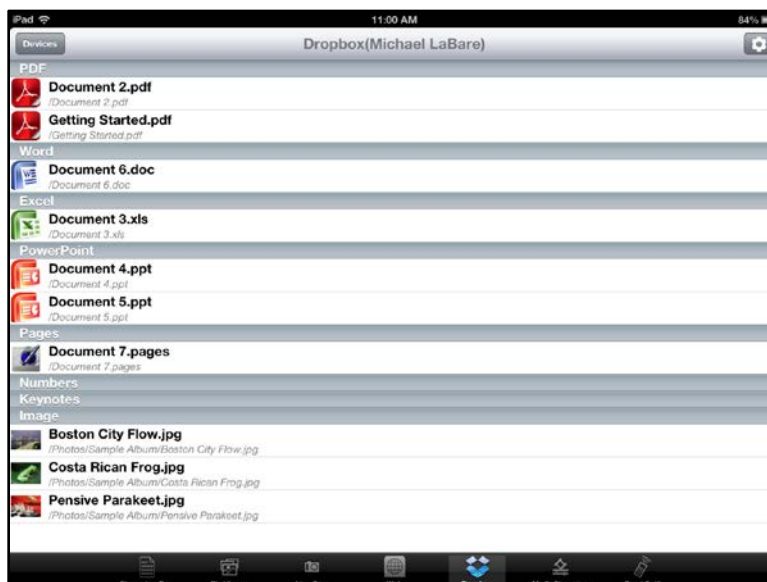
## Dropbox

***This feature requires an internet connection, the WiFi on the EZ Suite enabled display must be configured as a Client device on a wireless network connected to the internet. It also requires that the user have already established, or is willing to establish, a Dropbox account.***

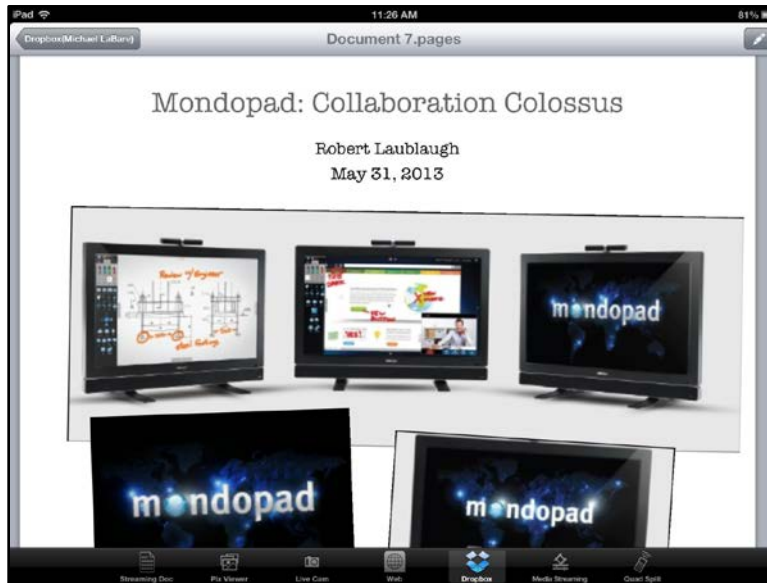
1. Touch the Dropbox feature from the function menu.
2. Enter your Dropbox account information when prompted.



3. After accessing your Dropbox account, your Dropbox files will be displayed by category.



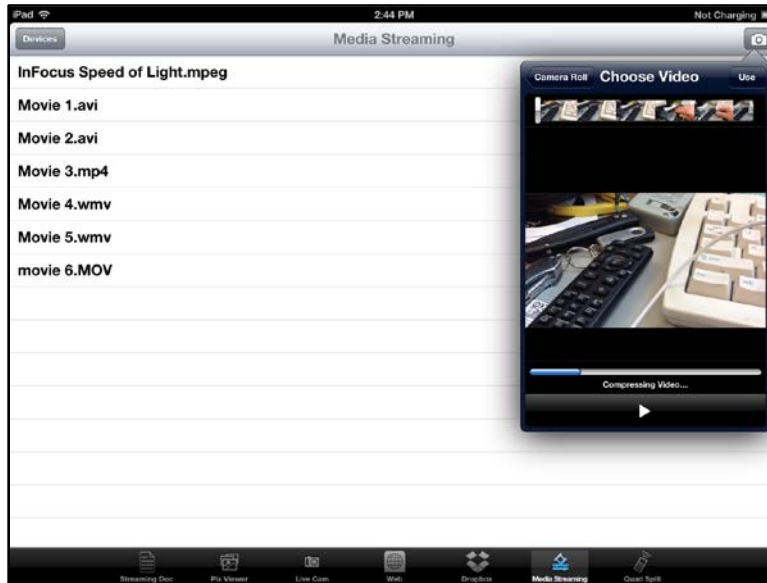
4. Touch the file you want to wirelessly display.



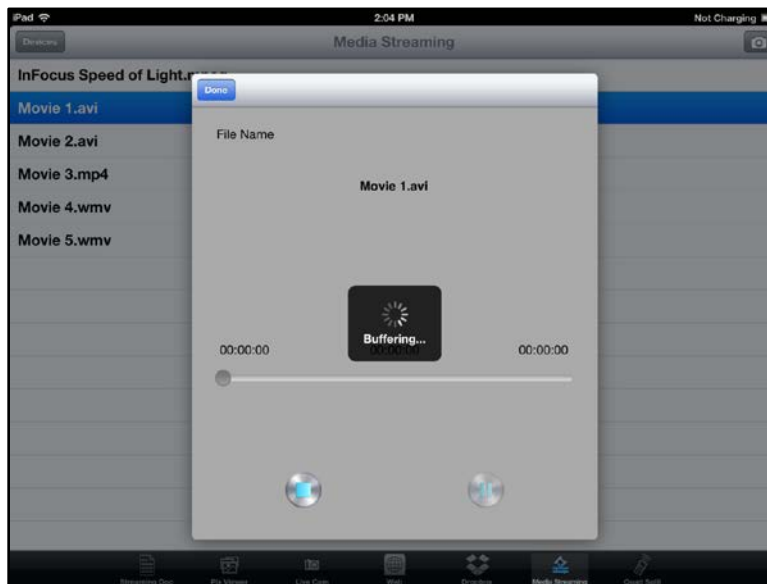
5. To annotate:
  - d. Touch the **Pencil icon** in the upper right corner.
  - e. Select color, line width, and Alpha (transparency).
  - f. Then simply write or draw directly on your iOS device screen.
6. To save the annotated image, touch the **Save icon** on the top of the screen.

## Media Streaming

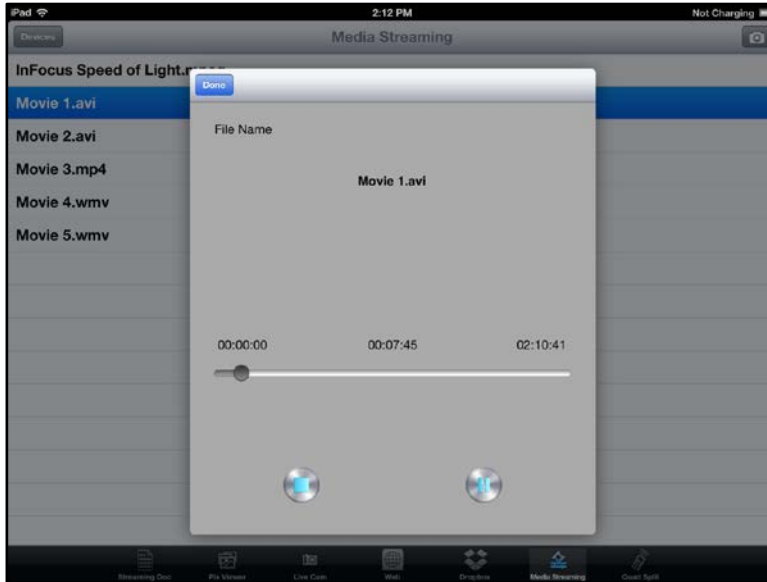
This feature will allow you to push the video you synced from iTunes over WiFi and videos taken by your iOS device. **Note:** Videos taken by the iOS device must first be compressed and saved before playing.



1. Touch the video on the list you wish to stream.



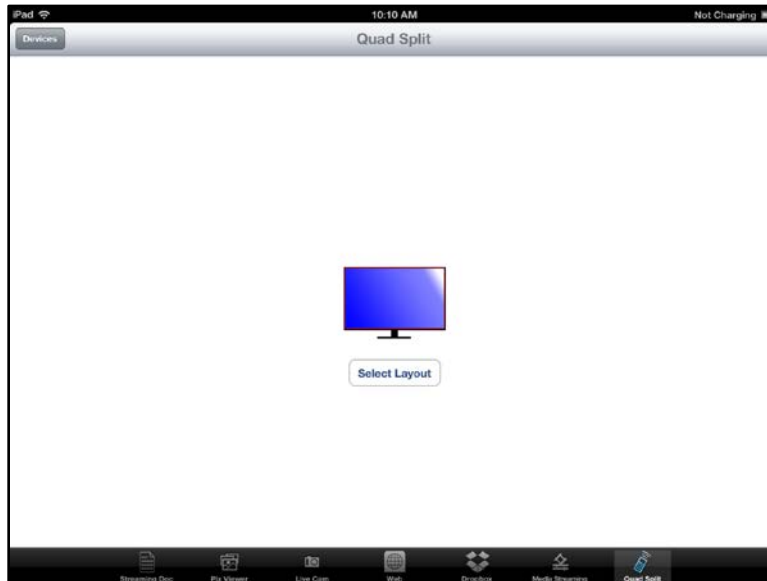
- Videos can be paused and specific segments selected through the control bar. **Note:** Some video formats do not support the Seek function.



## Quad Split Control

EZ Display allows 4 different devices to project in the same display via hybrid OS support. Any combination of Windows, Mac OS, iOS, and Android devices can be displayed at the same time. Note: Media Streaming is not supported during split screen display.

1. Through the Quad Split Control, you can decide which area your current source will be displayed. Touch the **Select Layout** button.



2. Touch the desired configuration and then touch the **OK** button.

