

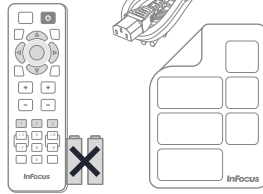
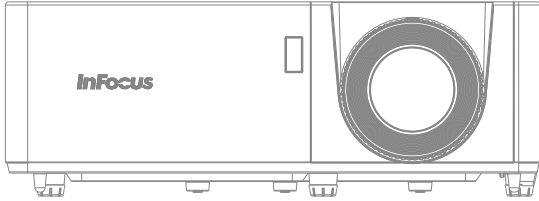
InFocus Quantum Laser Series - Simplified Users Guide (P139,P140)

1

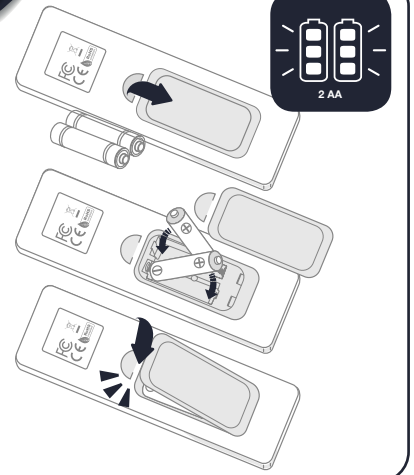
InFocus

Essential Series INL144, INL154, INL146,
INL156, INL148, INL158

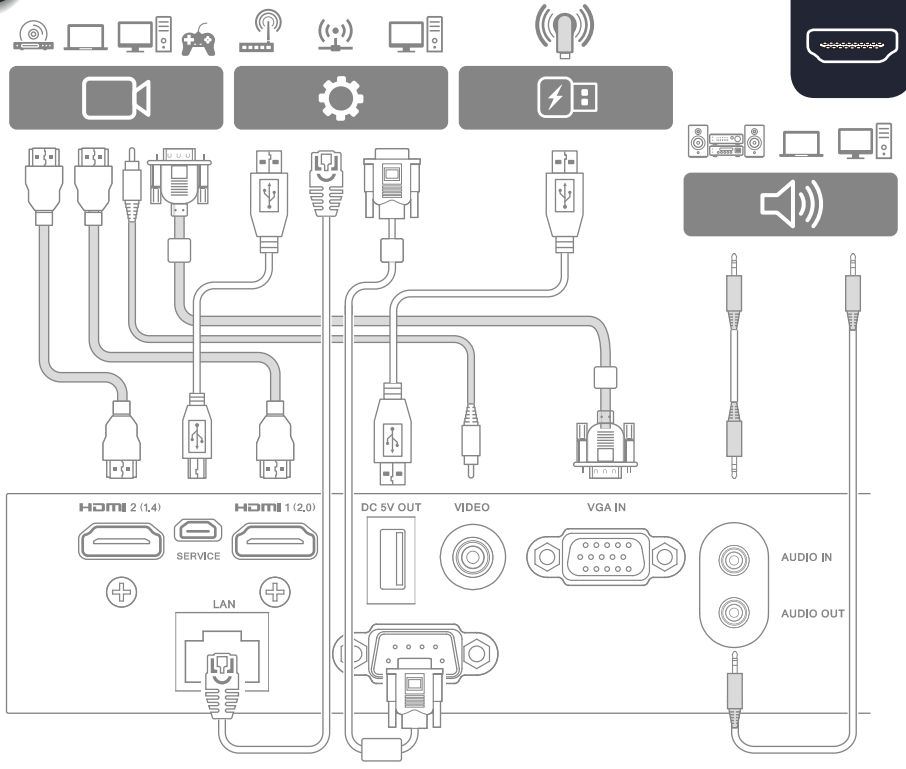
Superior Series INL2154, INL2146, INL2156,
INL2148, INL2158, INL2149, INL2159



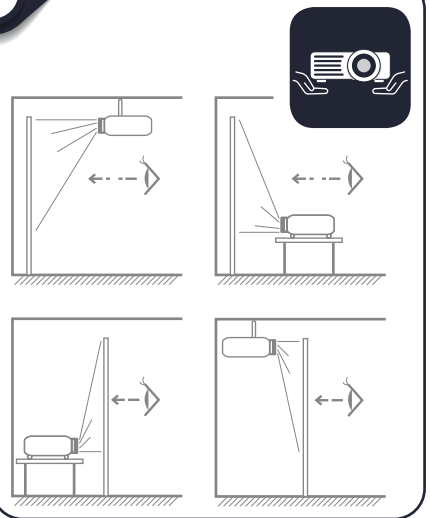
2



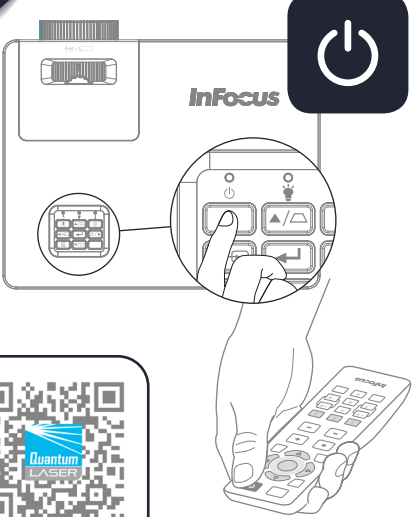
3



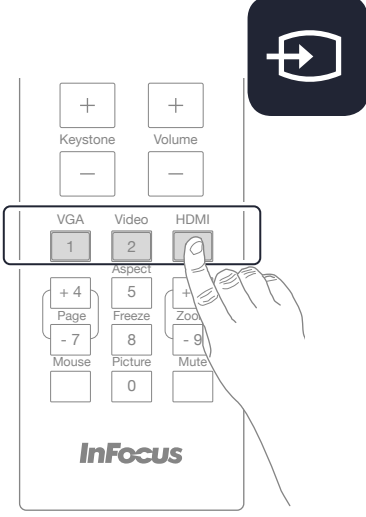
4



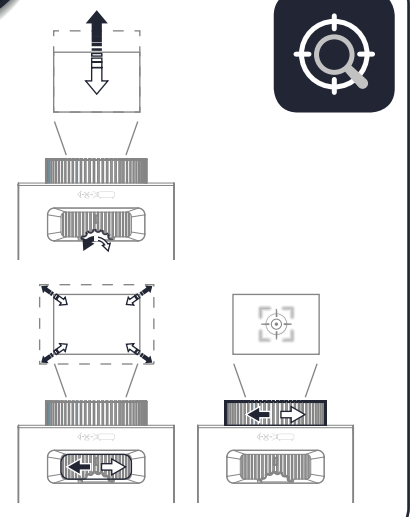
6



7



8



SAFETY INSTRUCTIONS



InFocus Digital Projectors are designed, built, and tested for use indoors, using InFocus lamps, Laser or LED light sources, InFocus ceiling mount hardware, and common line voltages (100V to 240V AC, 50/60 Hz). The use of other replacement light sources, outdoor operation, or different voltages has not been tested and could damage the projector, peripheral equipment and/or create a potentially unsafe operating condition. InFocus Projectors are designed to operate in a normal indoor low dust environment.

Voltage supply	100V - 240V AC; 50/60 Hz
Operation and storage temperature range	0 to 40 °C (32° to 104 °F)
Relative humidity	0 - 85% Operating humidity (without condensation)
Operation height	0 - 3050m (0 - 10000 feet) above sea level

安全指导



InFocus 数字投影仪的设计、制造和测试适用于室内使用，使用 InFocus 灯泡、激光或 LED 光源、InFocus 天花板安 吊装硬件和公共电网电压（100V 至 240V AC, 50/60 Hz）。使用其他替换光源、室外操作或未经测试的不同电压未经测试，可能会损坏投影仪、外围设备和/或造成潜在的不安全操作条件。InFocus 投影仪设计用于在正常的室内低尘环境中运行。

电压供应	100V - 240V AC; 50/60 赫兹
操作和存储温度范围	0 至 40 °C (32° 至 104 °F)
相对湿度	0 - 85% 工作湿度 (无冷凝)
操作高度 海拔	0 - 3050m (0 - 10000 英尺)

WARNING!

- Do not let objects or liquids enter the projector as they may cause fire or electric shock.
- To reduce the risk of fire or electric shock, do not expose this appliance to rain or moisture.
- Do not attempt to open, dismantle or service the unit yourself. Opening or removing covers may expose you to dangerous voltages, laser radiation or other hazards.

警告!

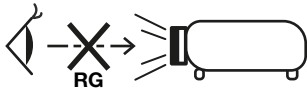
- 不要让物体或液体进入投影机，因为它们可能会引起火灾或触电。
- 为降低火灾或触电风险，请勿将设备暴露在雨中或潮湿环境中。
- 请勿尝试自行打开、拆卸或维修设备。打开或取下盖子可能会使您接触到危险电压、激光辐射或其他危险。

ATTENTION!

- Read and understand the full user guide before operating the projector.
- For International users this product is classified as a CLASS 1 LASER PRODUCT - RISK GROUP 2 of IEC 60825-1:2014. CLASS 3R of IEC 60825-1:2017.

注意力!

- 在操作投影机之前完整阅读并理解完整的用户指南。
- 对于国际用户，该产品被归类为 IEC 60825-1:2014 的 1 类激光产品 - 风险组 2。IEC 60825-1:2017 的 3R 类。



- For users in the U.S. this is a class 3R laser product. Avoid direct eye exposure.



- 对于美国用户，这是 3R 类激光产品。避免直接接触眼睛。

IEC/EN 60825-1:2014 CLASS 1 LASER PRODUCT RISK GROUP 2
Complies with 21 CFR 1040.10 and 1040.11 except for conformance as a Risk Group 2 LIP as defined in IEC 62471-5:Ed. 1.0. For more information see Laser Notice No. 57, dated May 8, 2019.

IEC/EN 60825-1:2014 PRODUIT LASER DE CLASSE 1 GROUPE DE RISQUE 2
Conforme aux normes 21 CFR 1040.10 et 1040.11, à l'exception de la conformité en tant que LIP du groupe de risque 2 définie dans la CEI 62471-5: Ed. 1.0. Pour plus d'informations, voir l'avis au laser n° 57 du 8 mai 2019.

IEC/EN 60825-1:2014 等级1雷射产品RG2危险等级
除了IEC 62471-5:Ed.1.0中定义的RG2 LIP 危险等级以外，要符合21 CFR 1040.10和1040.11。更多相关资讯，请参阅2019年5月8日的第57号雷射公告。

IEC/EN 60825-1:2014 1类激光产品RG2危险等级
除了IEC 62471-5:Ed.1.0中定义的RG2 LIP 危险等级以外，要符合21 CFR 1040.10和1040.11。更多相关资讯，请参阅2019年5月8日的第57号雷射公告。

IEC/EN 60825-1:2014 CLASS 1 LASER PRODUCT RISK GROUP 2
Complies with 21 CFR 1040.10 and 1040.11 except for conformance as a Risk Group 2 LIP as defined in IEC 62471-5:Ed. 1.0. For more information see Laser Notice No. 57, dated May 8, 2019.

IEC/EN 60825-1:2014 PRODUIT LASER DE CLASSE 1 GROUPE DE RISQUE 2
Conforme aux normes 21 CFR 1040.10 et 1040.11, à l'exception de la conformité en tant que LIP du groupe de risque 2 définie dans la CEI 62471-5: Ed. 1.0. Pour plus d'informations, voir l'avis au laser n° 57 du 8 mai 2019.

IEC/EN 60825-1:2014 等级1雷射产品RG2危险等级
除了IEC 62471-5:Ed.1.0中定义的RG2 LIP 危险等级以外，要符合21 CFR 1040.10和1040.11。更多相关资讯，请参阅2019年5月8日的第57号雷射公告。

IEC/EN 60825-1:2014 1类激光产品RG2危险等级
除了IEC 62471-5:Ed.1.0中定义的RG2 LIP 危险等级以外，要符合21 CFR 1040.10和1040.11。更多相关资讯，请参阅2019年5月8日的第57号雷射公告。

- Do not place the projector on an unstable surface as it may damage the projector or cause injury.
- The ambient operating environment should be free of airborne smoke, grease, oil and other contaminants that can affect the operation or performance of the projector.
- Install in accordance with the manufacturer's instructions. Do not install near heat sources such as radiators, heaters, stoves, or any other apparatus such as amplifiers that emit heat.
- This equipment uses AC power which can be subjected to conditions are unstable. The warranty for this equipment does not cover damage caused by electrical surge. To reduce the risk of this equipment becoming damaged it is suggested that the customer consider installing a surge protector power strip.
- Do not block the projector inlet or outlet air vents as this may cause the projector to overheat and shut down.
- Ensure the operating environment meets the requirements stated in the user guide.
- Only use original attachments/accessories specified by the manufacturer. Use only with the cart, stand, tripod, bracket, or table specified by the manufacturer, or sold with the apparatus. When a cart is used, use caution when moving the cart/ apparatus combination to avoid injury from tipping over.
- As with any bright light source do not stare into the direct beam (RG2 IEC 62471-5:2015). The bright light may harm your eyes.
- Turn off the projector and unplug the power cord before performing maintenance or installation of the projector.
- Remove any batteries from the remote control before storage. If the batteries are left in the remote control for long periods, they may leak. Batteries contain corrosive chemicals, which are harmful and can cause severe irritation and bodily injury.
- Refer all servicing to qualified service personnel. Servicing is required when the apparatus has been damaged in any way, such as when the power-cord supply or plug is damaged, liquid has been spilled, objects have fallen into the apparatus, the apparatus has been exposed to rain or moisture, does not operate normally, or has been dropped.
- The InFocus logo and InFocus are trademarks of InFocus Corporation and are used under licence. Other trademarks used herein are the properties of their respective owners.
- The symbol on the product, the accessories or packaging indicates that this device shall not be treated as unsorted municipal waste but shall be collected separately. Dispose of the device via a collection point for the recycling of waste electrical and electronic equipment if you live within the EU and in other European countries that operate separate collection systems for waste electrical and electronic equipment. By disposing of the device in the proper manner, you help to avoid possible hazards for the environment and public health that may otherwise be caused by improper treatment of waste equipment. The recycling of materials contributes to the conservation of natural resources.

- 请勿将投影机放置在不稳定的表面上，否则可能会损坏投影机或造成人身伤害。
- 周围的操作环境应该没有空气中的烟雾、油脂、油和其他可能影响投影机操作或性能的污染物。
- 按照制造商的说明进行安装。不要安装在热源附近，例如散热器、加热器、火炉或任何其他设备，例如会散发热量的放大器。
- 本设备使用交流电源，可能会受到条件不稳定的影响。本设备的保修不包括电涌造成的损坏。为降低此设备损坏的风险，建议客户考虑安装电涌保护器电源板。
- 请勿堵塞投影机的进风口或出风口，因为这可能会导致投影机过热并关闭。
- 确保操作环境符合用户指南中的要求。
- 仅使用制造商指定的原装附件/配件。只能与制造商指定的或随设备一起出售的推车、支架、三脚架、支架或桌子一起使用。使用手推车时，移动手推车/设备组合时要小心，以免翻倒造成伤害。
- 与任何明亮光源一样，请勿直视光束 (RG2 IEC 62471-5:2015)。强光可能会伤害您的眼睛。
- 在进行投影机的维护或安装之前，请关闭投影机并拔掉电源线。
- 存放前从遥控器中取出所有电池。如果电池长时间留在遥控器中，它们可能会漏液。电池含有腐蚀性化学物质，这些化学物质是有害的，会导致严重的刺激和身体伤害。
- 将所有维修交给合格的维修人员。当设备以任何方式损坏时需要维修，例如电源线或插头损坏、液体溅出、物体掉入设备内、设备暴露在雨中或受潮、不正常运行，或已掉线跌落。
- InFocus 徽标和 InFocus 是 InFocus Corporation 的商标，经许可使用。此处使用的其他商标是其各自所有者的财产。
- 产品、附件或包装上的符号表示该设备不应作为未分类的城市垃圾处理，而应单独收集。如果您居住在欧盟和其他运行单独的废弃电气和电子设备收集系统的欧洲国家/地区，请通过回收废弃电气和电子设备的收集点处理设备。通过以正确的方式处置设备，您可以帮助避免因废弃设备处理不当而可能对环境和公共健康造成危害。材料回收有助于保护自然资源。

