

# JBC

[www.jbctools.com](http://www.jbctools.com)

## INSTRUCTION MANUAL



## Solder Feed Iron

Ref. AP250-A

# Packing List

The following items should be included:

**Solder Feed Iron** ..... 1 unit  
Ref. AP250-A  
*Ø1 mm Feeder Nozzle (Ref. 0019212) is included*

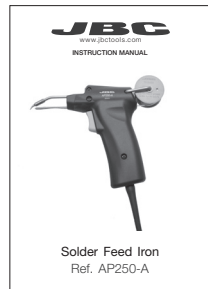
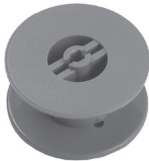
**Ø1.5 mm Feeder Nozzle** ..... 1 unit  
Ref. 0019211



**Reel** ..... 1 unit  
Ref. 0002801

**Allen Key** ..... 1 unit  
Ref. 0780493

**Manual** ..... 1 unit  
Ref. 0017297



## Features

The AP250-A Solder Feed Iron is fully compatible with any JBC station within the Modular Line and with the CF Solder Feed station within the Compact Line.

**Solder Feed Iron**  
Ref. AP250-A



**Control Unit**



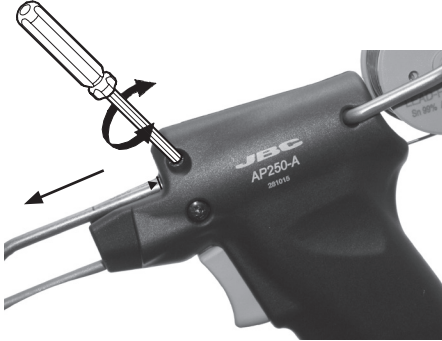
**Solder Feed Stand**  
Ref. AP-SD



# Changing cartridge

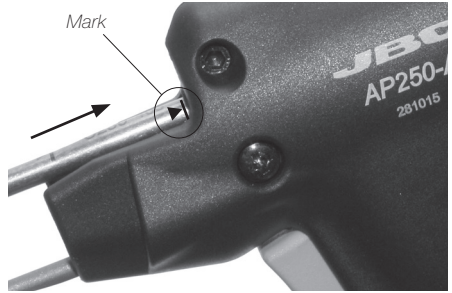
For a safe cartridge change, unplug the tool or turn the station off before following these guidelines:

## 1. Removing



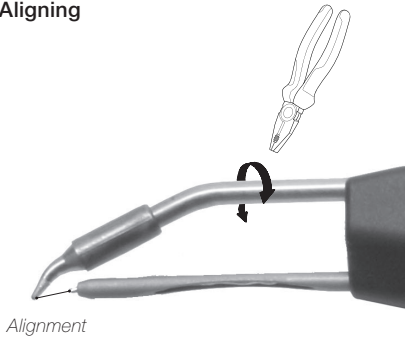
Loosen the screw and remove the cartridge.  
⚠ Use a flat pliers to remove it if still hot.

## 2. Inserting



Important: Insert the cartridge as far as the mark for a correct connection.

## 3. Aligning



Align the tip of the cartridge with the feeder nozzle. Use a pliers for a correct tip alignment.

## 4. Fixing

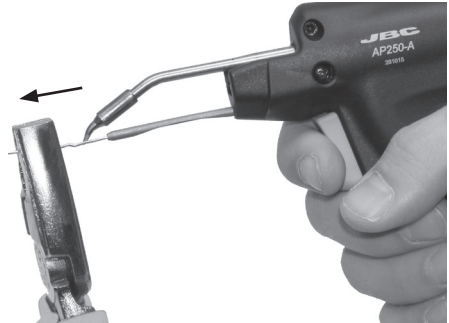


**Important:** Tighten the screw again. This is necessary for the tool to function.

## Replacing solder wire

### 1. Remove the remaining solder wire

Pull out the remaining solder from inside the feeder nozzle. Use a pair of pliers if necessary.



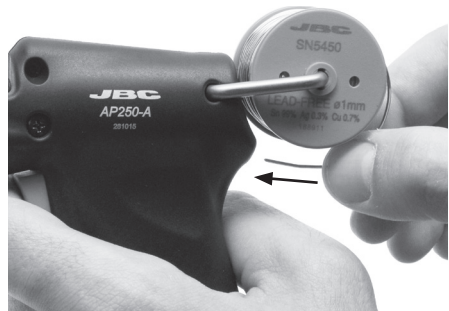
### 2. Replace the solder reel

Remove the empty reel as shown and fit the new one.



### 3. Insert the new solder wire


Insert the solder wire while pushing the trigger repeatedly until the solder wire appears at the nozzle.

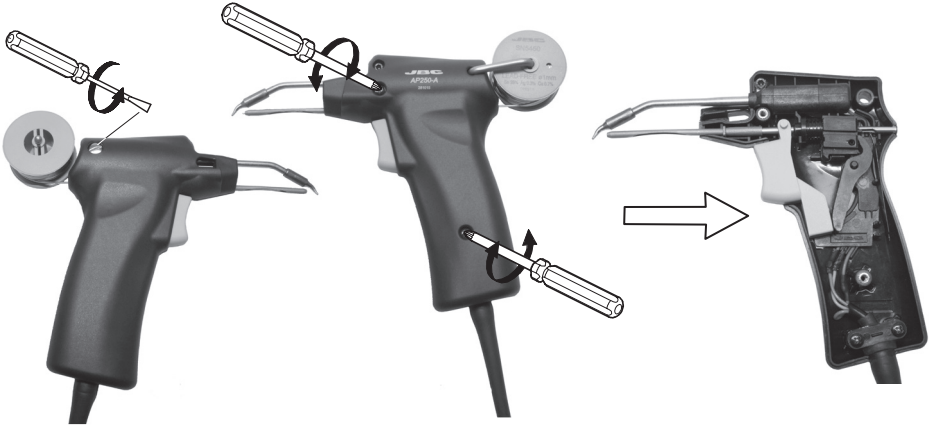


*Note: Use 0.8 - 1.0 mm diameter solder wire.  
Use 1.0 - 1.5 mm diameter solder wire with the 0019211 Feeder Nozzle.*

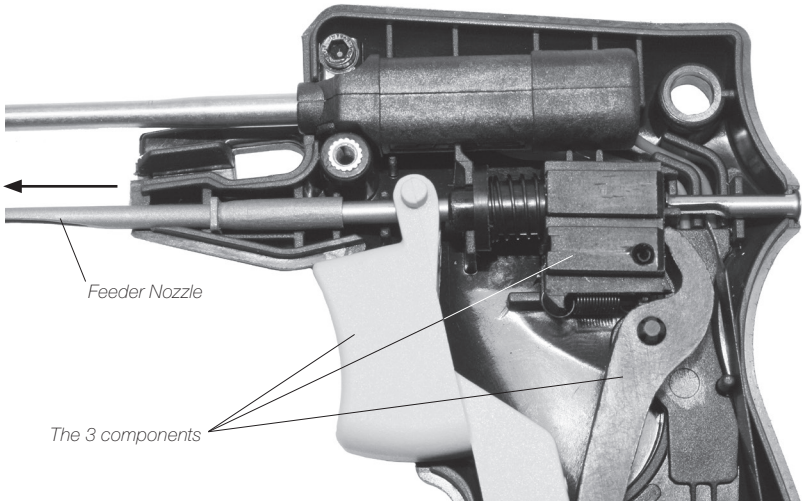
# Changing the Feeder Nozzle

1. Take out the screw from behind to remove the reel and the solder wire from the nozzle. Next, remove the two screws from the other side and lift the cover off.

 **Make sure the tool is unplugged.**



2. Take out the nozzle and replace it with the new one while holding the following 3 components in place. Reassemble the handpiece and tighten the 3 screws.



## Regulating the Feeder Nozzle

Depending on the component you are soldering or the cartridge being used, you can either shorten or lengthen the feeder nozzle by (a max) 10 mm.

1. Loosen the screw to change the length of the nozzle.



2. Adjust it to the required length and tighten the screw.



# Compatible Cartridges

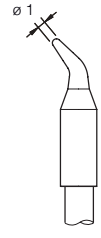
The AP250-A Solder Feed Iron works with C250 cartridge range. Find the model that best suits your soldering needs in [www.jbctools.com](http://www.jbctools.com)



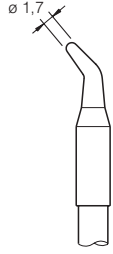
C250-401



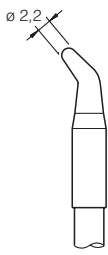
C250-402



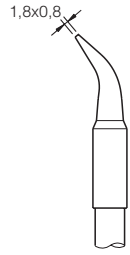
C250-403



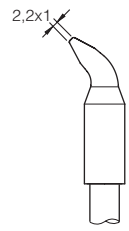
C250-409



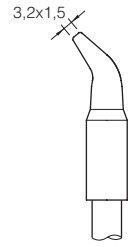
C250-410



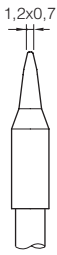
C250-405



C250-406



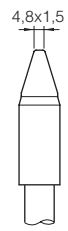
C250-418



C250-407



C250-408



C250-411



C250-413

*Note: All the cartridges shown are actual size.*



## Accessories

### Solder Reel Stand

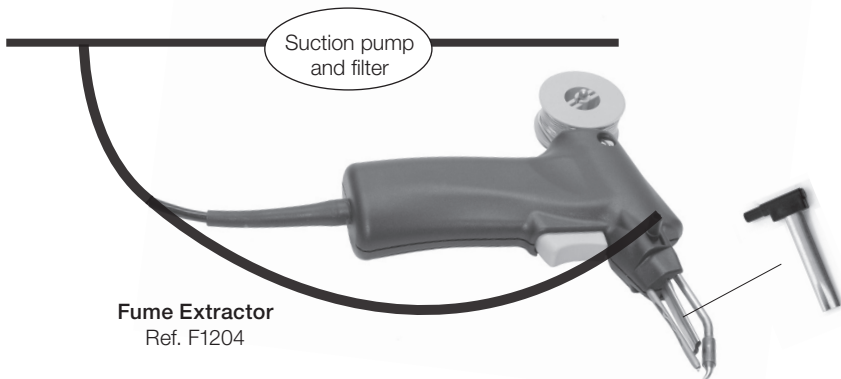
For production line work, we recommend using our BE-SA Solder Reel Stand which can hold up to 2.5 Kg of solder wire.

Simply wrap the solder wire twice around the empty reel as shown.



### Fume Extractor

The fume extractor is an easy & safe solution to extract the fumes produced while soldering.







# Specifications

- Weight: 232 g (0.51 lb)
- Diameter of solder wire: up to 1.5 mm / 0.06 in

Complies with CE standards  
ESD protected housing "skin effect"

# JBC

---

## Warranty

JBC's 2 year warranty covers this equipment against all manufacturing defects, including the replacement of defective parts and labour.

Warranty does not cover product wear or misuse.

In order for the warranty to be valid, equipment must be returned, postage paid, to the dealer where it was purchased.

---



This product should not be thrown in the garbage.

In accordance with the European directive 2002/96/EC, electronic equipment at the end of their life must be collected and returned to an authorized recycling facility.



Manual in other languages available on our website

**[www.jbctools.com](http://www.jbctools.com)**