

DMS

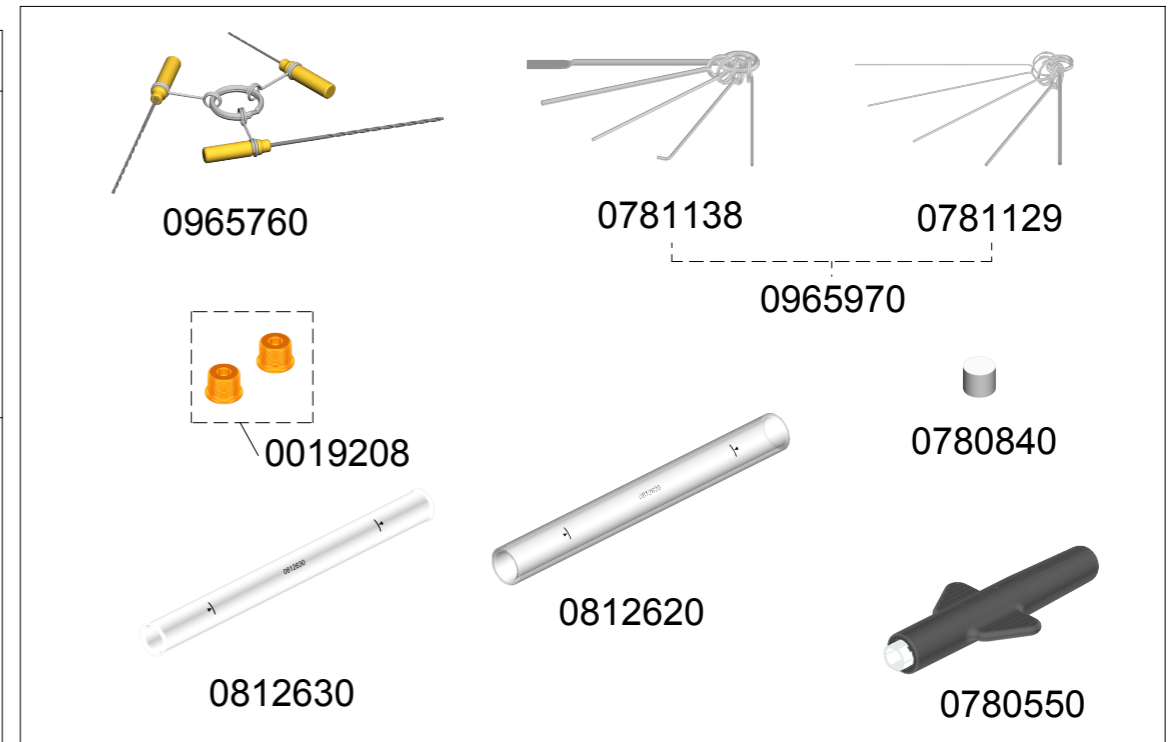
4-Tool DMU Desoldering Station

- Ref.: **DMSE-9QB** 100V
DMSE-1QB 120V
DMSE-2QB 230V

DMU CONTROL UNIT



| SPARE PARTS | |
|--|---------|
| DMU CONTROL UNIT | |
| -CIRCUIT | 0027172 |
| -ENCLOSURE | |
| · TOP | 0019028 |
| · BOTTOM | 0026182 |
| · FRONT+DISPLAY | 0026184 |
| · BACK | 0026183 |
| MSE ELECTRIC DESOLDERING MODULE | |
| -CIRCUIT | 0018453 |
| -ENCLOSURE | |
| · TOP | 0015266 |
| · BOTTOM | 0022642 |
| · FRONT | 0014688 |
| · BACK | 0015261 |
| -PUMP | 0005652 |



- Ref.: **DMSE-9QB** 100V FUSE T-8A
DMSE-1QB 120V FUSE T-6A
DMSE-2QB 230V FUSE T-3,15A

