

# Flex-Share Charging Station

## CSE-1615



## Owners Manual

JAR SYSTEMS

Revision B

For a copy of the most up-to-date guide, please contact a JAR Systems representative or visit:

[www.JAR-Systems.com/Support](http://www.JAR-Systems.com/Support)

## **WARNINGS:**

Failure to read, thoroughly understand, and follow all instructions can result in serious personal injury, damage to equipment, or voiding of factory warranty. It is the installer's responsibility to make sure all mounting systems are properly assembled and installed using the instructions provided.

Failure to provide adequate structural strength for this mounting system can result in serious personal injury or damage to equipment. It is the installer's responsibility to make sure the structure to which this mounting system is attached can support five times the combined weight of all equipment. Reinforce the structure as required before installing the mounting system. Any wall to which the mount is being attached may have a maximum drywall thickness of 5/8" (1.6cm).

Exceeding the weight capacity can result in serious personal injury or damage to equipment. It is the installer's responsibility to make sure the combined weight of all components attached to this mount does not exceed 100 lbs.

Do not stack more than two units. Only use manufacturer supplied stacking hardware and follow instructions included with stacking hardware for installation.

Use this mounting system only for its intended use as described in these instructions. Do not use attachments not recommended by the manufacturer.

Never operate this mounting system if it is damaged. Contact JAR Systems for replacement or repair.

This unit must always be used by adults or with adult supervision.

Do not use this unit outdoors.

Liquids should not be stored in, set on, or placed inside this unit.

**If the unit is being used or transported on an AV cart or charging cart, the unit must be secured down to the cart.**

## **WARRANTY:**

This product comes with a five-year warranty that covers any defects in material or workmanship and extends to the original consumer of the product only. JAR Systems LLC will replace the product with a new or refurbished product, repair the product, send replacement parts, or refund the purchase price of the product, at JAR Systems LLC's discretion. This warranty does not cover accidental damage, unreasonable use, neglect, tampering or other causes not arising from defects in material or workmanship.

Any implied warranties last only as long as the warranty periods listed above except where state law does not allow limitations on how long an implied warranty lasts. This includes but is not limited to the implied warranties of merchantability and fitness. JAR Systems LLC's responsibility is limited to the actions listed above and nothing else.

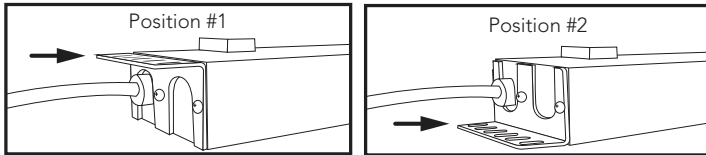
This warranty does not cover, and JAR Systems, LLC will not be responsible for, any damages due to loss of use of the product, or any other costs or expenses incurred by you or anyone else who uses the product, whether due to defects, breach of contract, negligence, strict liability or otherwise. JAR Systems is not liable for any indirect, special, incidental or consequential damages related to the product or this warranty. Some states do not allow exclusions or limitations on consequential or incidental damages, so these limitations or exclusions may not apply.

This warranty gives you specific legal rights and you may also have other rights that vary from state to state. This warranty is governed by the laws of Florida, excluding its conflict of laws principles, unless your state requires that its law be used.

# Installing the Power Strip

## REVERSIBLE POWER STRIP

The power strip can be mounted on either the front or back side by reversing the mounting brackets. Loosen the three screws on each side, rotate the bracket, and replace the screws.



Install the power strip in one of three possible positions with 4 screws and nuts.

**Position 1:** Recommended for most usage for wall or desk installations: Power strip is positioned on the **inside** of the unit with outlets facing in through the opening in the back.

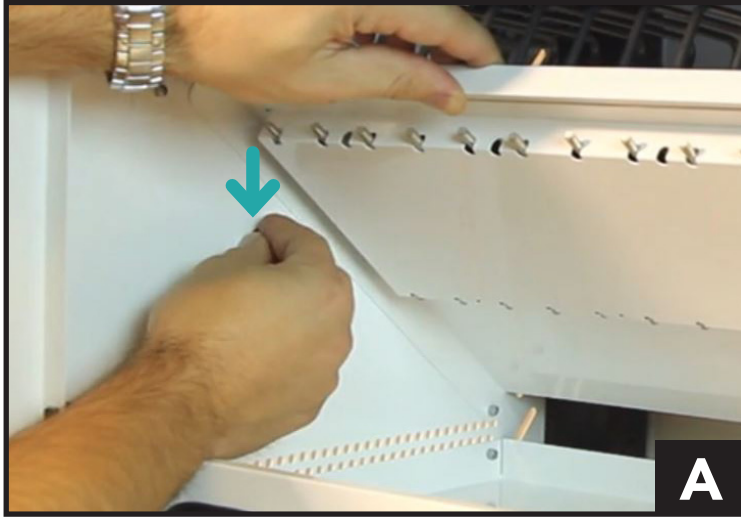
**Position 2:** Alternative position for desktop usage: Power strip is positioned on the **outside** of the unit with outlets facing in through the opening in the back.

**Position 3:** Alternative position for wall-mount usage: Power strip is mounted to bottom side of chassis with outlets facing upward.

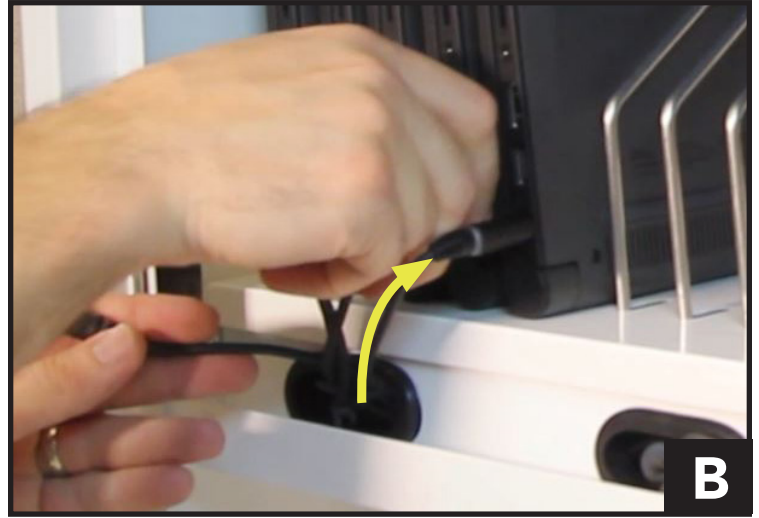


# Installing Charging Cables and Adapters

**Step 1:** Place a security screw in the side of the chassis **(A)** to hold the tray open during the wiring process.



**Step 2:** Determine the length of cable that is needed to reach from the tray to the devices **(B)**.



**Step 3:** Determine the best method of arranging the cables that come with your device (figures **C, D, E** below).

**AC ADAPTERS FRONT TO BACK**

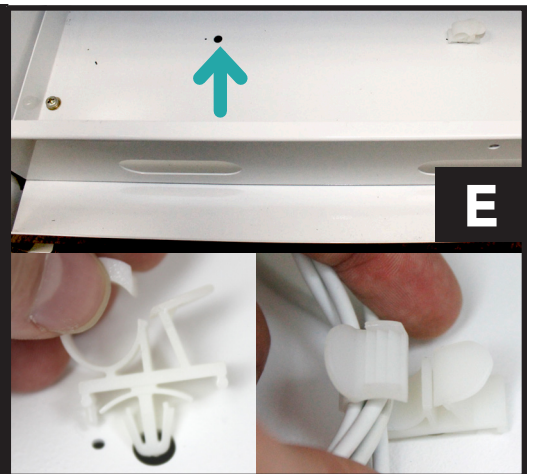
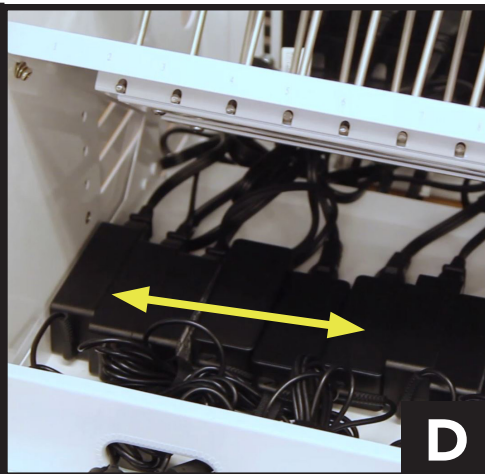
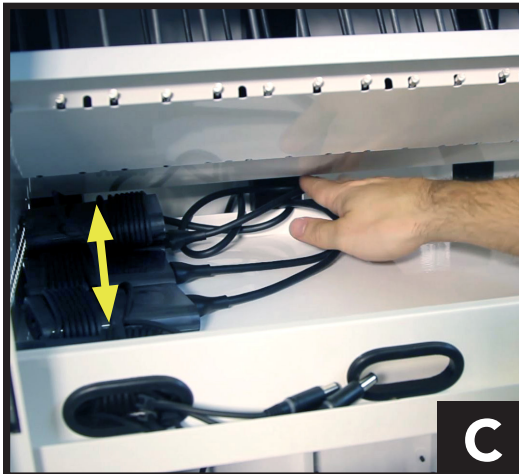
Best for some wider adapters.

**AC ADAPTERS LEFT TO RIGHT**

Best for some narrower adapters.

**TABLET (NO AC ADAPTER)**

Use provided clips beneath shelf to secure cables in groups of 5-6.





**Step 4:** Arrange adapters in decided configuration, leaving just enough cable length sticking out of the port to plug in the devices.

**TIPS:**

- Adapters can often be installed just as they come bundled in the box. For example, the adapter in figure **(F)** comes with the cable wrapped around the adapter and it works out nicely when installed in that condition. If the cables are not bundled at all, twist ties or Velcro ties may be helpful.
- If the devices have particularly large AC adapters (approximately 5" x 2" x 1.25") the adapters will fit more snugly in the tray. In this case it may be best to arrange the majority of the adapters as far back in the tray as possible from left to right, flipping about half on their side. Contact JAR Systems for additional assistance.

**Step 5:** Plug the charger into the power strip. For best results, bundle any excess cable length if it is not already **(G)**.

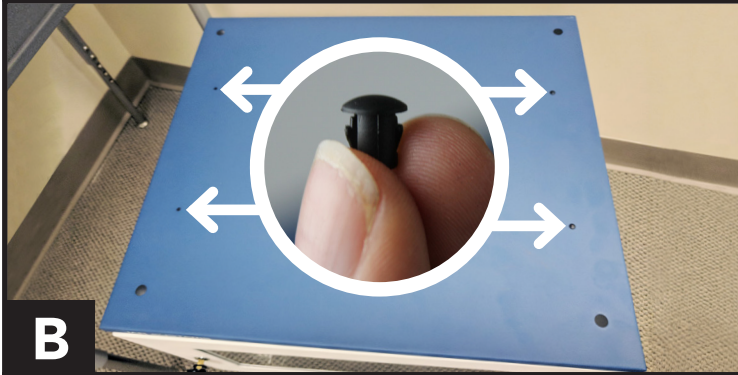
**Step 6:** (OPTIONAL) Place a security screw in the center of the shelf to prevent adapters from being removed or tampered with **(H)**.



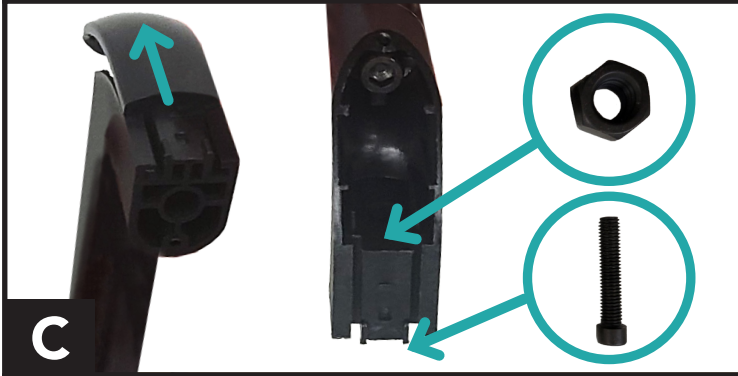
# CSE Stacking/Mobility Kit Assembly (Sold Separately)



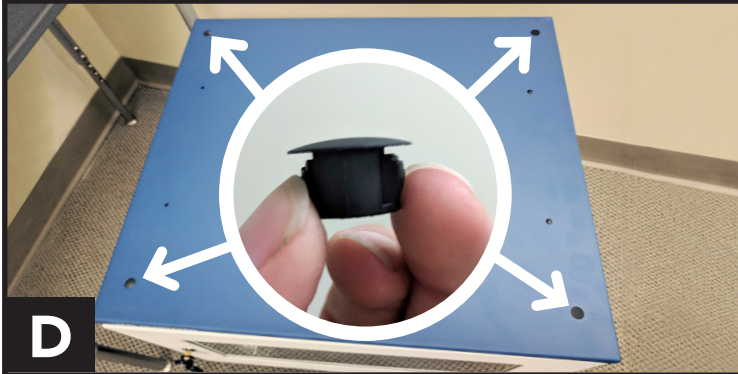
**A**



**B**



**C**



**D**



**E**

## INSTALLING CASTERS

1. Place the unit on its side. Make sure the locks are engaged on all four casters. Secure each caster to the bottom using four bolts per caster. **(A)**

## INSTALLING HANDLE

1. Determine which side of the unit you want to install the handle on and remove the two small black caps from that side. Squeeze the sides of the cap and push it out at the same time. Leave the two small black caps on the other side in the unit. **(B)**
2. Slide the removable covers on either side of the handle to be able to locate the holes for the screws.
3. Align the handle over the holes, reach inside the unit with one hand holding the bolt and Allen wrench and stick the bolt up through the bottom. With the other hand, thread the nut onto the bolt down to the two guides in the plastic handle to hold the bolt in place as it is tightened eliminating the need for a wrench, and tighten the bolt from below. **(C)**
4. Slide the removable covers back on either side of the handle to finish installing the handle.

**NOTE:** If you plan to stack two units, install the handle on the top unit.

## STACKING TWO CHARGING STATIONS

1. Remove the black caps from the four larger holes in the top of the bottom unit. Squeeze the sides of the cap and push it out at the same time. **(D)**
2. Place the second unit on its side and insert the four rubber feet if they are not already installed.
3. Place the second unit on top of the first unit. Line up the holes in the bottom side of the top unit with the four larger holes in the top side of the bottom unit.
4. Insert the stacking screws into the holes from inside of the bottom unit. Screw in all four partially at first and, when they are all in, tighten them the rest of the way. **(E)**

