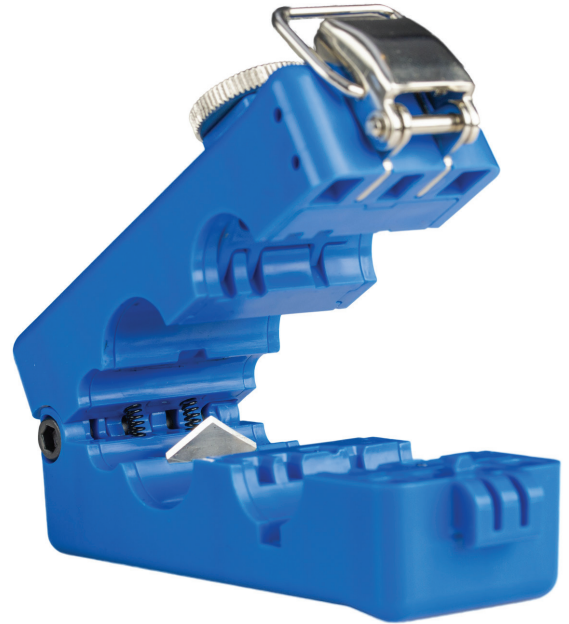




## WSS-4625 - WEB SLITTER & SHAVING TOOL

### **INSTRUCTIONS FOR USE:**

- 1) Open the tool and load the cable so that the webbing of the cable is centered under the blade.
- 2) Close the tool and pull the tool in the direction of the arrow marking on the top and bottom of the tool.
- 3) Bend the messenger away from the cable and load it in the shaving groove with the excess webbing facing the shaving blade.
  - a) Make sure the arrow of the tool is facing you before locking the tool.
- 4) Close the tool and tighten down the cable using the knob.
- 5) Pull the tool towards you, in the direction of the arrow marking, to shave the excess webbing off the cable.



## WSS-4625RB - REPLACEMENT BLADE CARTRIDGE FOR WSS-4625 WEB SLITTER & SHAVER

### **REPLACEMENT INSTRUCTIONS:**

- 1) With the tool locked, remove the two screws on the housing of the underside of the WSS-4625 using a Phillips or flathead screwdriver.
- 2) Insert the two hex keys into the two screwheads on the hinge of the WSS-4625 and rotate them in opposite directions to loosen and remove the shaft and screw.
  - a) Note that you may hear a cracking noise when rotating the keys.
- 3) Unlock the tool and remove the top half of the WSS-4625 and set it aside.
- 4) Lift the bottom half of the WSS-4625 and gently push the blade cartridge out of the housing.
  - a) CAUTION: Blades are sharp. Be careful when handling blade cartridges.
- 5) Insert the WSS-4625RB into the housing and tighten it down by pushing on it from the top and tightening the screws from the bottom.
- 6) Push the top half of the WSS-4625 onto the bottom half and lock it.
- 7) While keeping the backside of the tool closed, insert the shaft into the hinge and tighten it down using the screw and hex keys.

