

## CORIO CP-601F Refrigerated/Heating Circulator

with an enhanced pump performance and a temperature range up to +200°C

Refrigerated Circulators from the CORIO CP range are suitable for applications with a temperature range up to +200°C. The enhanced pump performance ensures they are suitable for easy temperature control tasks in combination with external applications.

### Your advantages

- Models for internal and external applications
- Bright, white, easy-to-read display
- Very quiet
- Easy change-over from internal to external circulation and vice versa
- External pump connections (M16x1)
- USB interface
- R232 interface
- Space-saving cooling coil design provides more usable space in the bath tank
- Bath lid and drain tap included
- Removable ventilation grid
- Refrigeration unit without side vents
- System for low liquid level
- Class III (FL) according to DIN 12876-1



Made in Germany

### Technical Data

|                                            |                                    |     |     |      |     |      |      |      |
|--------------------------------------------|------------------------------------|-----|-----|------|-----|------|------|------|
| Order No.                                  | 9013705                            |     |     |      |     |      |      |      |
| Model series                               | CORIO                              |     |     |      |     |      |      |      |
| Category                                   | Refrigerated - Heating Circulators |     |     |      |     |      |      |      |
| Working temperature range (°C)             | -35 ... +200                       |     |     |      |     |      |      |      |
| Temperature control                        | PID                                |     |     |      |     |      |      |      |
| Temperature stability (°C)                 | ±0.03                              |     |     |      |     |      |      |      |
| Setting / display resolution               | 0.01 – 0.1 °C                      |     |     |      |     |      |      |      |
| Temperature Display                        | LED                                |     |     |      |     |      |      |      |
| Heating capacity (kW)                      | 1                                  |     |     |      |     |      |      |      |
| Cooling capacity (Medium Ethanol)          | °C                                 | 200 | 20  | 10   | 0   | -10  | -20  | -30  |
|                                            | kW                                 | 0.6 | 0.6 | 0.54 | 0.5 | 0.33 | 0.19 | 0.07 |
| Pump capacity flow rate (l/min)            | 8 ... 27                           |     |     |      |     |      |      |      |
| Pump capacity flow pressure (psi)          | 1.5 ... 10.2                       |     |     |      |     |      |      |      |
| Bath opening / bath depth (W x L / D inch) | 13 x 18.5 / 27.2                   |     |     |      |     |      |      |      |
| Pump connections                           | M16x1                              |     |     |      |     |      |      |      |
| Barbed fittings diameter (inner dia. / mm) | 8 / 12                             |     |     |      |     |      |      |      |
| Filling volume liters                      | 8 ... 10                           |     |     |      |     |      |      |      |
| Refrigerant stage 1                        | R452A                              |     |     |      |     |      |      |      |
| Filling volume refrigerant stage 1 (g)     | 150                                |     |     |      |     |      |      |      |

|                                       |                                                                                                     |
|---------------------------------------|-----------------------------------------------------------------------------------------------------|
| Global Warming Potential for          | 2140                                                                                                |
| Carbon dioxide equivalent stage 1 (t) | 0.321                                                                                               |
| Ambient temperature                   | 5...40 °C                                                                                           |
| Dimensions W x L x H (inch)           | 13 x 18.5 x 27.2                                                                                    |
| Weight (LBS)                          | 84.9                                                                                                |
| Included with each unit               | 2 Schlaucholiven passend für Schlauch 8 und 12 mm I.W.<br>(Pumpenanschlüsse mit M16x1 Außengewinde) |
| Bath tank                             | Stainless steel                                                                                     |
| Bath cover                            | integrated                                                                                          |
| Cooling of compressor                 | Air                                                                                                 |
| Available voltage versions            | 200 - 230 V / 50 Hz<br>115 V / 60 Hz<br>100 V / 50-60 Hz                                            |

## Characteristics



### 100% Checked.

100% testing. 100% quality. Each CORIO undergoes thorough quality testing before leaving the factory.



### More bath.

Designed for more comfort. Thanks to the recessed cooling coil, the internal bath provides more space.



### ATC.

Absolute Temperature Calibration, 1-point calibration (CD).



### Powerful. Adjustable.

Strong pressure pump, continuously adjustable.



### Brilliant.

Bright display with strong illumination can be viewed easily from a long distance.



### Quick start.

Individual JULABO consultation and comprehensive manuals at your disposal.



### Condensation protection.

Superb design solution. Integrated ventilation directs air over the bath lid and minimizes condensation.



### Safety.

CORIO complies with Class III (FL) according to DIN 12876-1 and switches off automatically in case of high temperature or low liquid level alarm.



### Connection. Easy.

Inclined pump connections (M16x1) facilitate the connection of applications. Each unit includes 2 barbed fittings of 8/12 mm diameter each.



### Satisfied customers.

11 subsidiaries and more than 100 partners worldwide guarantee fast and qualified JULABO support.



### Connectivity.

Remote control made easy. CORIO CP circulators feature a USB connection and RS232 interface.



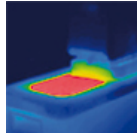
### Services 24/7.

Around the clock availability. You can find suitable accessories, data sheets, manuals, case studies, and more at [www.julabo.com](http://www.julabo.com).



### Early warning system for low liquid level.

Maximum safety for your application. Optical and audible alarm allows user to refill bath fluid in time.



### Solid.

Minimized energy loss through high-quality insulation.



### Everything at the front.

All operating controls and safety functions are accessed easily and comfortably from the front.



### Space saving. Free up space.

Place your JULABO Circulator right next to an application, another unit, or wall. That saves space. This is made possible by eliminating vents and connections on the sides.



### Exact.

You can rely on it. PID1 control and 'Active Cooling Control' make the new CORIO precise and perfect.



### Stable.

Rubber feet allow for a secured footing of your CORIO to prevent damage to your laboratory equipment.



### Green technology.

Development consistently applied environmentally friendly materials and technologies.



### Switch on. And off you go.

Intelligent operating concept. Ready for operation with just a few quick and easy steps.



### Handle with ease.

Makes day-to-day work easy. Comfortably move your CORIO around by using the ergonomic handles (front and rear).



### Click.

One for all. Control the circulator and the refrigeration unit with only one power switch.



### Internal. External.

The pump is controlled via a lever located directly below the display. Easily change between internal and external circulation.



### Tidy.

The special drain tap for easy draining of bath fluids without tools.



### JULABO. Quality.

Highest standards of quality for a long product life.



### Timer. Integrated.

CORIO circulators include an integrated timer function. When the set time has elapsed, a signal sounds and the device switches off. Setting range: 0 ... 999 minutes



**Locked in.**

The lockable power plug guarantees safe connection. More process safety.



**Touching permitted.**

Optimum safety. The ergonomic plastic handle protects your fingers from hot surfaces.



**Mobile.**

Extra easy handling. Integrated castors for easy repositioning of refrigerated circulators. (CD-600F, CD-601F, CD-900F, CD-1000F, CD-1001F)



**Unique.**

Specially designed pyramids ensure that the condensed liquid drips directly back into the bath.



**Modern. Reliable.**

Every JULABO Circulator is equipped with high-grade components like i.e. platinum sensors, proven motor technology, CAN-Bus communication and much more.



**USB.**

Remote control made easy. CORIO CD circulators feature a USB connection.