

## CORIO CP-BC26 Heating Circulator

for internal and external temperature applications with stainless steel baths and working temperatures up to +200 °C

CORIO Heating Circulators feature professional technology for demanding applications. These units facilitate internal temperature control in the bath tank or control of externally connected applications.

### Your advantages

- Bright, white, easy-to-read display
- Very quiet
- Easy change-over from internal to external circulation and vice versa
- Strong pump capacity, infinitely adjustable
- USB connection
- R232 interface
- High-quality bath tanks made of stainless steel with bath lid and drain tap
- Integrated pump connection M16x1
- Early warning system for low liquid level
- Integrated cooling coil for counter-cooling



Made in Germany

### Technical Data

|  |  |
|--|--|
| Order No.                                  | 9013526  |
| Model series                               | CORIO  |
| Category                                   | Heating Circulators  |
| Working temperature range (°C)             | +20 ... +200   |
| Temperature stability (°C)                 | ±0.02  |
| Setting / display resolution               | 0.01 – 0.1 °C  |
| Temperature Display                        | LED  |
| Heating capacity (kW)                      | 1  |
| Pump capacity flow rate (l/min)            | 8 ... 27   |
| Pump capacity flow pressure (psi)          | 1.5 ... 10.2   |
| Bath opening / bath depth (W x L / D inch) | 10.2 x 13.8 / 7.9  |
| Pump connections                           | M16x1  |
| Barbed fittings diameter (inner dia. / mm) | 8 / 12   |
| Filling volume liters                      | 19 ... 26  |
| Ambient temperature                        | 5...40 °C  |
| Dimensions W x L x H (inch)                | 15.4 x 24.4 x 18.9   |
| Weight (LBS)                               | 41.9   |
| Included with each unit                    | 2 Schlaucholiven passend für Schlauch 8 und 12 mm I.W. (Pumpenanschlüsse mit M16x1 Außengewinde) |
| Cooling coil                               | integrated   |
| Bath tank                                  | Stainless steel  |

|                            |   |
|----------------------------|---|
| Bath cover                 | integrated                                      |
| Available voltage versions | 200 - 230 V / 50-60 Hz<br>100 -115 V / 50-60 Hz |

Eine K hlschlange f r Arbeiten unterhalb bzw. nahe der Umgebungstemperatur ist integriert.

**Characteristics**



**100% Checked.**  
100% testing. 100% quality. Each CORIO undergoes thorough quality testing before leaving the factory.



**Powerful. Adjustable.**  
Strong pressure pump, continuously adjustable.



**ATC.**  
Absolute Temperature Calibration, 1-point calibration (CD).



**Quick start.**  
Individual JULABO consultation and comprehensive manuals at your disposal.



**Brilliant.**  
Bright display with strong illumination can be viewed easily from a long distance.



**Safety.**  
CORIO complies with Class III (FL) according to DIN 12876-1 and switches off automatically in case of high temperature or low liquid level alarm.



**Connection. Easy.**  
Inclined pump connections (M16x1) facilitate the connection of applications. Each unit includes 2 barbed fittings of 8/12 mm diameter each.



**Satisfied customers.**  
11 subsidiaries and more than 100 partners worldwide guarantee fast and qualified JULABO support.



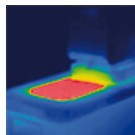
**Connectivity.**  
Remote control made easy. CORIO CP circulators feature a USB connection and RS232 interface.



**Services 24/7.**  
Around the clock availability. You can find suitable accessories, data sheets, manuals, case studies, and more at [www.julabo.com](http://www.julabo.com).



**Early warning system for low liquid level.**  
Maximum safety for your application. Optical and audible alarm allows user to refill bath fluid in time.



**Solid.**  
Minimized energy loss through high-quality insulation.



**Everything at the front.**  
All operating controls and safety functions are accessed easily and comfortably from the front.



**Stable.**  
Rubber feet allow for a secured footing of your CORIO to prevent damage to your laboratory equipment.



### Green technology.

Development consistently applied environmentally friendly materials and technologies.



### Switch on. And off you go.

Intelligent operating concept. Ready for operation with just a few quick and easy steps.



### Handle with ease.

Makes day-to-day work easy. Comfortably move your CORIO around by using the ergonomic handles (front and rear).



### Tidy.

The special drain tap for easy draining of bath fluids without tools.



### Internal. External.

The pump is controlled via a lever located directly below the display. Easily change between internal and external circulation.



### Touching permitted.

Optimum safety. The ergonomic plastic handle protects your fingers from hot surfaces.



### JULABO. Quality.

Highest standards of quality for a long product life.



### Unique.

Specially designed pyramids ensure that the condensed liquid drips directly back into the bath.



### Locked in.

The lockable power plug guarantees safe connection. More process safety.



### USB.

Remote control made easy. CORIO CD circulators feature a USB connection.