

L2493 Rev. O 10/00

**SERVICE INSTRUCTIONS:** These Service Instructions are intended to be used by qualified personnel at Authorized Enerpac Service Centers. Users of Enerpac FSM-8 Mechanical Wedge should see the Instruction Sheet for operation information.

#### 1.0 LUBRICATION (see Figs. 1 and 2)

The FSM-14 will stand up to continuous use and high loading as long as it is lubricated each time it is used. (Please note that any high pressure grease can be used) To properly maintain the tool it is important to grease the Jaws (No. 2) regularly.

#### 1.2 Lubrication

A Grease Nipple (No. 17) is supplied with the tool located on the Handle (No. 7) for easy storage. The Grease Nipple should be removed from the Handle and inserted in turn into each of the Jaws, and a grease gun used to pump grease into the Wedge **NOTE:** the Wedge must be in the closed position. The Grease Nipple insertion point is shown on Fig. 2. Grease should also be smeared into the Slots positioned at the side of each Jaw to allow the Pins (No. 5) to slide freely as a load is applied to the Wedge.

#### 2.0 DISASSEMBLY (See Fig. 1)

1. Connect the Pump and prime the Wedge until it is half opened.
2. Loosen the Grub Screws (No. 4). Pull out the Pins (No. 5) using small mole grips/vice grip.

3. Prime the Wedge forward until it is fully extended.
4. Slide one of the Jaws forward until it is removed from the Wedge (see Fig. 3).
5. Repeat Steps 1 through 3 to remove the second Jaw.
6. Loosen the Grub Screw (No. 13) and slide the Wedge off the Connector (No. 3).
7. Loosen and remove the Allen Screws (No.'s 6 and 8 respectively) in order to remove the Handle (No. 7).
8. Rotate the Cylinder (No. 10) counter-clockwise to remove from Body (No. 11).
9. The Connector (No. 3) is screwed into the Cylinder with Loctite 638 Retaining Adhesive. To remove the Connector from the Cylinder requires the Cylinder to be stripped down and the Seal removed from the Piston Rod. The Piston Rod and Connector can be placed in an oven at a temperature of 150 degrees centigrade in order to soften the Loctite and allow the Connector to be unscrewed from the Piston Rod.

#### 3.0 REASSEMBLY

Follow Steps 9 through 1 above.

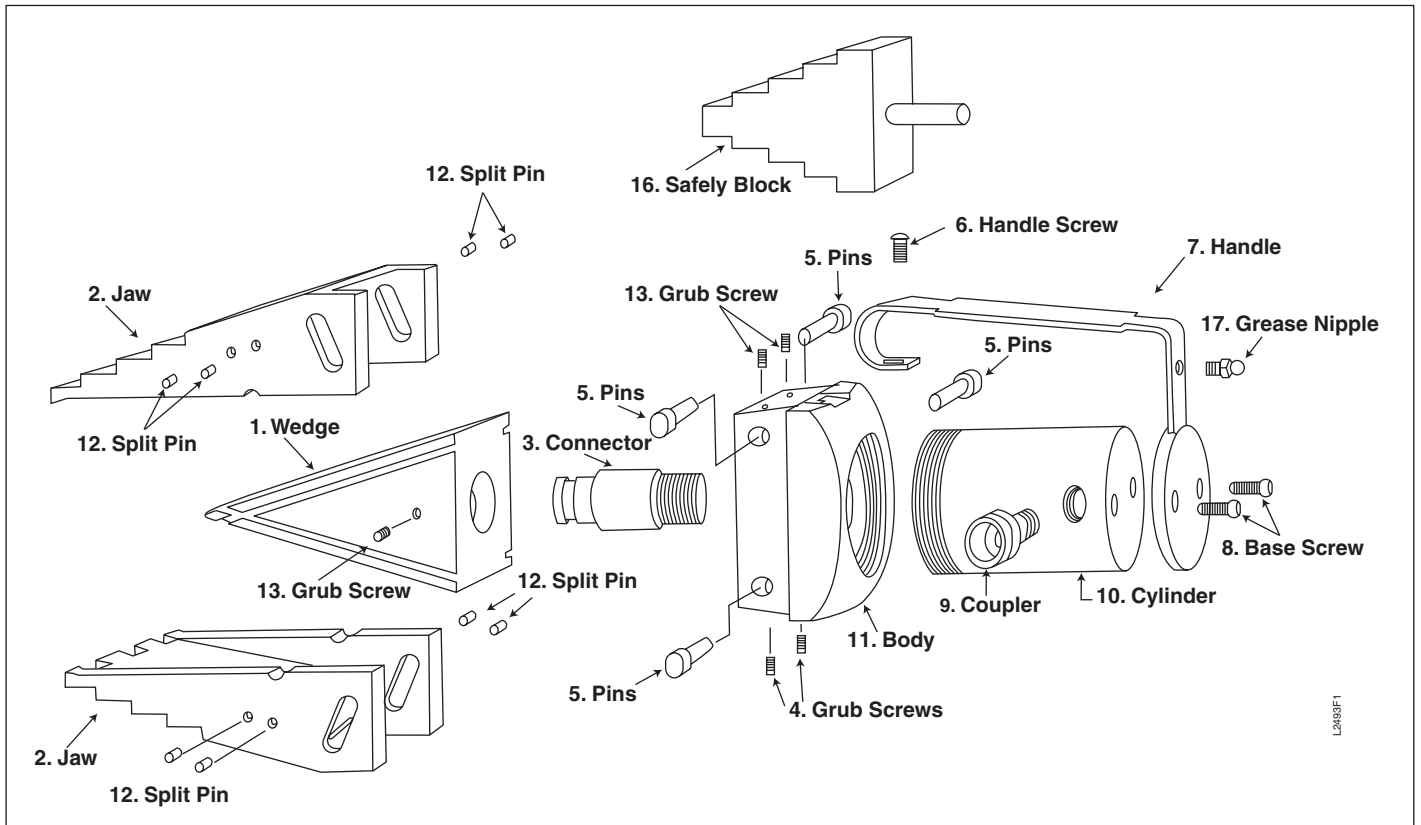
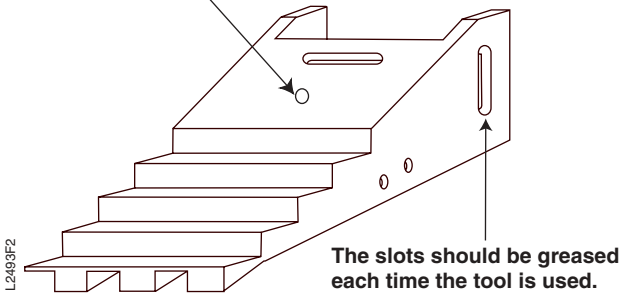


Figure 1

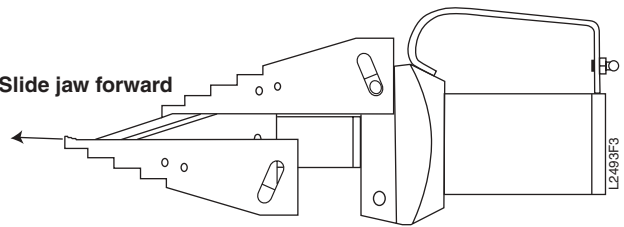
**NOTE: A Grease Nipple is located on the handle of the tool for easy storage of the tool for easy storage.**

**6 mm threaded hole for grease nipple and step block attachment**



**Figure 2**

**Slide jaw forward**



**Figure 3**

**Enerpac Worldwide Locations**

◆ e-mail: [info@enerpac.com](mailto:info@enerpac.com)

◆ internet: [www.enerpac.com](http://www.enerpac.com)

**Australia**

ENERPAC, Applied Power Australia Ltd.  
Block V Unit 3  
Regents Park Estate  
391 Park Road  
Regents Park NSW 2143  
(P.O. Box 261) Australia  
Tel: +61 297 438 988  
Fax: +61 297 438 648

**Germany, Switzerland,  
Austria, Eastern Europe**

ENERPAC  
Applied Power GmbH  
P.O. Box 300113  
D-40401 Düsseldorf  
Germany  
Tel: +49 211 471 490  
Fax: +49 211 471 49 28

**Japan**

Applied Power Japan Ltd.  
1-1-11, Shimomae  
Toda-shi  
Saitama Pref.  
Japan 335-0016  
Tel: +81-48-430-1055  
Fax: +81-48-430-1066

**South Korea**

ENERPAC  
Applied Power Korea Ltd.  
163-12 Dodang-Dong  
Choong-Ku, Buchun-shi  
Kyunggi-Do  
Republic of Korea  
Tel: +82 32 675 08 36  
Fax: +82 32 675 30 02

**Canada**

Applied Power Canada Ltd.  
6615 Ordan Drive, Unit 14-15  
Mississauga, Ontario L5T 1X2  
Tel: +1 905 564 5749  
Fax: +1 905 564 0305

**Hong Kong**

ENERPAC  
Room 907 Workingberg  
Commercial Building  
41-47 Marble Road  
North Point  
Tel: +852-2561 6295  
Fax: +852-2561 6772

**Mexico**

ENERPAC Applied Power  
Mexico S.A. de C.V.  
Avenida Principal  
La Paz #100  
Fracc. Industrial La Paz  
42084 Pachuca, Hidalgo  
Tel: +52 771 337 00  
Fax: +52 771 838 00

**Spain, Portugal**

ENERPAC  
Applied Power International S.A.  
Avda. Camino de lo Cortado 21  
San Sebastian de los Reyes  
28709 Madrid  
Spain  
Tel: +34 91 661 11 25  
Fax: +34 91 661 47 89

**Toll Free:**

Tel: +1 800 268 4987  
Fax: +1 800 461 2456

**India**

ENERPAC  
Hydraulics Technology  
(India) Pvt Ltd  
Plot No. A-571  
MIDC, TTC Industrial Area  
Mahape-400 701  
Navi Mumbai, India  
Tel: +91 22 769 47 78  
Fax: +91 22 769 84 73

**The Netherlands, Belgium,  
Luxembourg, Sweden, Denmark,  
Norway, Finland**

ENERPAC B.V.  
Storkstraat 25 /  
P.O. Box 269, 3900 AG Veenendaal  
The Netherlands  
Tel: +31 318 535 911  
Fax: +31 318 525 613  
+31 318 535 848

**United Kingdom, Ireland**

ENERPAC Limited  
Unit 3, Colemeadow Road  
North Moons Moat  
Redditch  
Worcester B98 9BP  
United Kingdom  
Tel: +44 01527 598 900  
Fax: +44 01527 585 500

**China**

Applied Power China Ltd.  
1F, 269 Fute N. Road  
Waigaoqiao Fre Trade Zone  
Pudong New District  
Shanghai, 200 131  
China  
Tel: +86 21 5866 9099  
Fax: +86 21 5866 7156

**Italy**

ENERPAC  
Applied Power Italiana S.p.A.  
Via Canova 4  
20094 Corsico (Milano)  
Tel: +39 2 486 111 00  
Fax: +39 2 486 012 88

**Singapore**

Applied Power Asia Pte Ltd  
No. 8, Ang Mo Kio,  
Industrial Park 2  
#01-00  
Singapore 569500  
Thomson Road  
P.O. Box 114  
Singapore 915704  
Tel: +65 484 5108  
Fax: +65 484 5669

**USA, Latin America  
and Caribbean**

ENERPAC  
P.O. Box 3241  
6101 N. Baker Road  
Milwaukee, WI 53209 USA  
Tel: +1 262 781 6600  
Fax: +1 262 781 1049

**France, Turkey, Greece,  
Africa, Middle East**

ENERPAC S.A.  
B.P. 200  
Parc d'Activités  
du Moulin de Massy  
F-91882 Massy CEDEX (Paris) France  
Tel: +33 1 601 368 68  
Fax: +33 1 692 037 50

**User inquiries:**

+1 800 433 2766

**Distributor inquiries/orders:**

+1 800 558 0530

**All Enerpac products are guaranteed against defects in workmanship and materials for as long as you own them.  
For your nearest authorized Enerpac Service Center, visit us at [www.enerpac.com](http://www.enerpac.com)**