

# LG Digital X-ray Detector

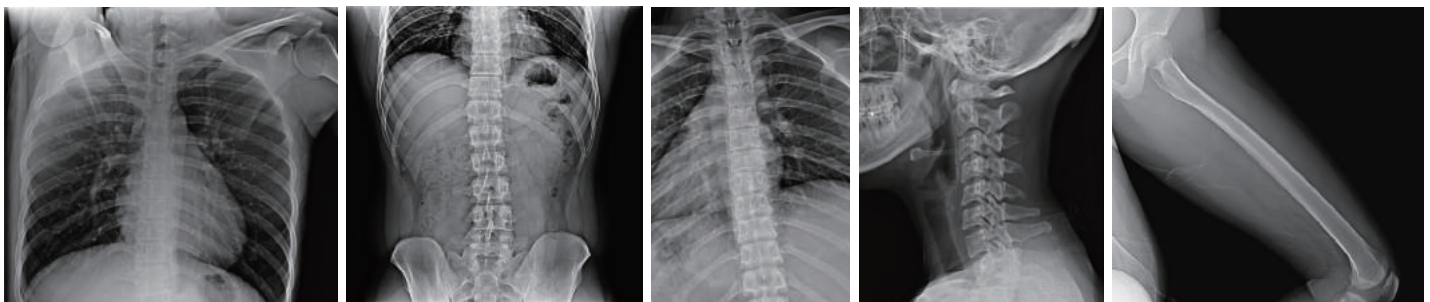


17HK700G-W | 14HK701G-W

## Superior Image Quality for Diagnostic Confidence

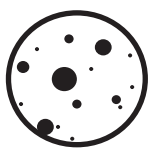
Highly sensitive CsI AED detector with 16bit AD conversion (data input & output)

\*Auto Exposure Detection



## Light yet Durable

IP41: Water resistance & dustproof

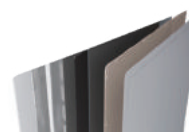


**Solids level 4**  
Protected against objects of size 1 mm or larger



**Liquids level 1**  
Protected against dripping liquids, such as blood and bodily fluids

Magnesium & carbon-fiber body



With a super strong body that combines carbon-fiber with magnesium, The LG DXD is not only lightweight, but also exceptionally strong.

**Product weight**

17HK700G-W



14HK701G-W  
Including Battery



**Maximum load weight**

17HK700G-W & 14HK701G-W

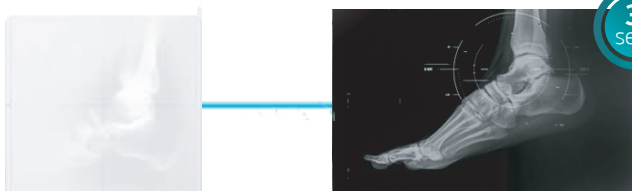


**Uniform load**  
150kg (331lb)  
**Point load**  
100kg (220lb)

## Rapid Image Availability Increases Productivity

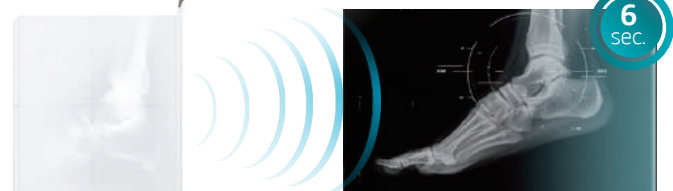
3sec. (wired) / 6sec. (wireless, 802.11ac)

**Wired**



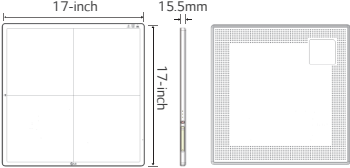
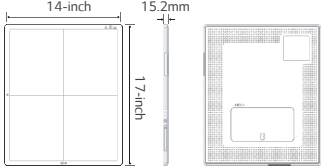
(17HK700G-W, 14HK701G-W)

**Wireless**



(14HK701G-W Only)

## Specification

Model Name		17HK700G-W (Wired)	14HK701G-W (Wired / Wireless)
External Dimension / Weight		17 x 17 inch	14 x 17 inch
			
		3.2kg, 7lb	2.95kg, 6.5lb (including battery)
Purpose		General Radiography	
Scintillator		CsI	
Pixel Size		140 μm	
Image Area	X-ray Sensitive Pixel	3072 x 3072 pixels	2500 x 3052 pixels
	X-ray Sensitive Area	16.9" x 16.9" / 430.08 x 430.08 mm	13.8" x 16.8" / 430.08 x 430.08 mm
MTF	MTF @ 0.5lp/mm	(Typ.) 89%	
DQE	DQE @ 0.1lp/mm	(Typ.) 72%	
A/D Conversion		16bit	
Data Output		16bit	
Communication	Type	Wired	Wired / Wireless
	Wireless	-	IEEE802.11a/b/g/n/ac, 2.4GHz / 5GHz
	AED (Auto Exposure Detection)	Support	
Cycle Time		8sec.	8sec. (Wired) / 11sec. (Wireless)
Full Image		3sec.	3sec. (Wired) / 6sec. (Wireless)
Durability	Maximum Load Weight	Full (Uniform Load): 150kg, 331lb Local (Point Load): 100kg, 220lb	
	Resistance Rating	IP41	
	Sensor Protection Plate	Carbon Fiber Plate	
Battery	Type	-	Detachable
	Operating Time	-	(Typ.) 1636 shots / 5hrs. (@ CycleTime 11sec.)
		-	(Typ.) 220 shots / 5.5hrs. (@ CycleTime 90sec.)
	Duration in Standby Status	-	15hrs. (Typ.)
Charging Time	-	3hrs.	