

Read Me First

LL50A
Parameter Setting Software
with Ladder Program Building Function and Network Profile Creating Function
Installation Manual



IM 05P05A01-01EN

5th Edition : Feb. 2013

YOKOGAWA

Yokogawa Electric Corporation

This manual describes the installation/uninstallation of LL50A.

Product Registration

Thank you for purchasing YOKOGAWA products. YOKOGAWA provides registered users with a variety of information and services. Please allow us to serve you best by completing the product registration form accessible from our homepage.
<http://www.yokogawa.com/ns/reg/>

Contents

- Introduction
- 1. Safety Precautions
- 2. Operating Environment
- 3. Installing USB Converter Driver Software
- 4. Installing LL50A Parameter Setting Software

Introduction

Thank you for purchasing the UTAdvanced Series Digital Indicating Controller and LL50A Parameter Setting Software. This manual describes the installation/uninstallation of LL50A. Please read though this user's manual carefully before using the product. For the function and operating method of LL50A Parameter Setting Software, see "LL50A Parameter Setting Software User's Manual." For details of each function, refer to the electronic manual. User's manuals can be downloaded or viewed at the following URL.

<http://www.yokogawa.com/ns/ut/im/>

■ Checking the Contents of the Package

Before using the product, refer to the table of Model and Suffix Codes to make sure that the delivered product is consistent with the model and suffix codes you ordered.

Model	Suffix code	Description
LL50A		Parameter Setting Software (with Ladder Program Building Function and Profile Creating Function)
	-00	Always "-00"

Also make sure that the following items are included in the package.
Parameter Setting Software/USB converter driver CD-ROM (Parts No.: L4502XH) ... x1
Dedicated cable (Parts No.: A1059UR) and dedicated adapter (Parts No.: L3502LP) ... x1
LL50A Installation Manual (this document) x1 (A3 size)
User's Manual (CD-ROM) x1

1. Safety Precautions



The following symbol is used on the instrument. It indicates the possibility of injury to the user or damage to the instrument, and signifies that the user must refer to the user's manual for special instructions. The same symbol is used in the user's manual on pages that the user needs to refer to, together with the term "WARNING" or "CAUTION."



CAUTION
Calls attention to actions or conditions that could cause injury to the user or damage to the instrument or property and indicates precautions that should be taken to prevent such occurrences.

Note

Identifies important information required to operate the instrument.

■ CD Handling Guideline

Note

- While the CD is being accessed, do not remove the CD from the CD-ROM drive, cut the power to the PC, or reset the computer.
- Please store your original CDs carefully.
Install the program on your hard disk, and run it from your hard disk during actual use.

2. Operating Environment

PC

Applicable OS: Windows XP Professional (with Service Pack 2 or later) (32-bit version)
Windows Vista Business (with Service Pack 1) (32-bit version)
Windows 7 Professional (32-bit/64-bit versions)
Windows 8 Pro (32-bit and 64-bit versions) (Desktop type)
In case of Windows XP/Vista, .NET Framework 3.5 installed.

Recommended CPUs: Pentium 4 Processor 2.4 GHz or higher (3.0 GHz or higher in Windows Vista Business/Windows 7 Professional/Windows 8 Pro)

Pentium D Processor 2.6 GHz or higher
Pentium Core 2 Duo Processor 1.8 GHz or higher
Pentium Dual-Core Processor 1.6 GHz or higher

Recommended Main Memory:

Windows XP Professional; 512 MB or more
Windows Vista Business/Windows 7 Professional/Windows 8 Pro; 2 GB or more

Hard disk space:

Program storage capacity: 100 MB or more
.NET Framework 3.5 SP1 storage capacity: 620 MB or more

Display: 1024 x 768 pixels or more
Color: 256 or more colors

Communication port: For communication with a dedicated cable, use the USB port/one channel.

For communication via an RS-485 communication terminal, use an RS-232C port (An RS-232C/RS-485 converter is required; Model ML2 is recommended)

For Ethernet communication, use 10BASE-T/100BASE-TX.

CD-ROM drive: One (required for installation)

Printer: Paper size; Letter or A4 (required for printing)

3. Installing USB Converter Driver Software



- Logon in Windows XP:
 - Log on using the user name of Administrators group.
 - The program does not start normally if the user name not belonging to the Administrators group is used for logging on.
- In Windows Vista/Windows 7/Windows 8, install USB converter driver software as an administrator.
- Avoid entering just the drive as the installation location, such as C:\. Enter the full directory path.
- Before installing USB converter driver software, quit all running applications.
- When reinstalling USB converter driver software, uninstall the installed USB converter driver software first, and then reinstall USB converter driver software.

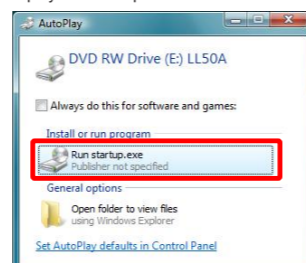
■ Installing USB Converter Driver Software in Windows Vista/Windows 7/Windows 8

Operating procedures and screens in Windows Vista.

- Start Windows.
- Insert the CD of LL50A into the CD-ROM drive. The start-up screen appears automatically.



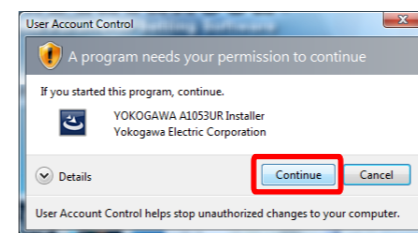
Note: If the start-up screen does not appear automatically and the AutoPlay screen appears, click **Run startup.exe** to display the start-up screen.



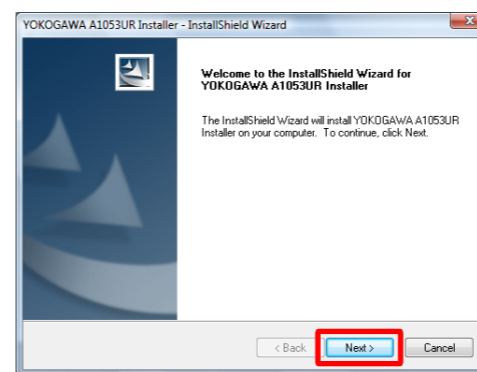
- Click **USB Driver Installation**.



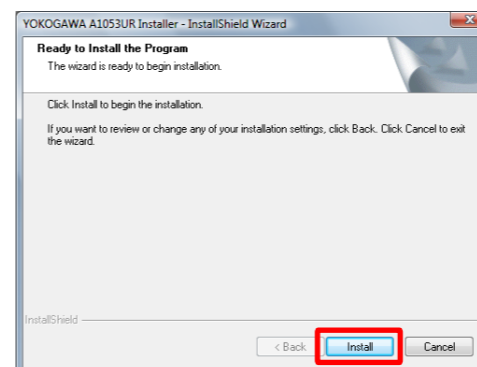
- The User Account Control screen appears. Click **Continue**.



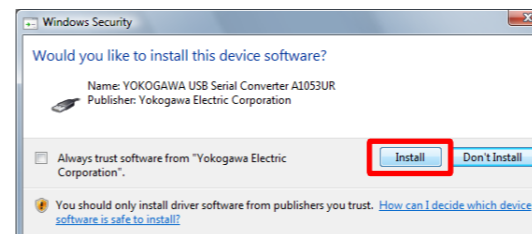
- InstallShield Wizard screen appears. Click **Next**.



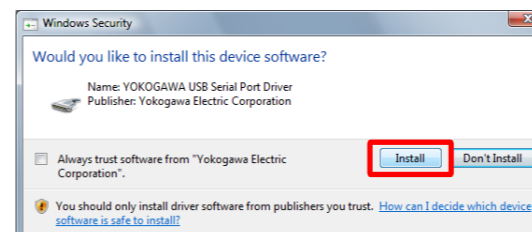
- Click **Install**.



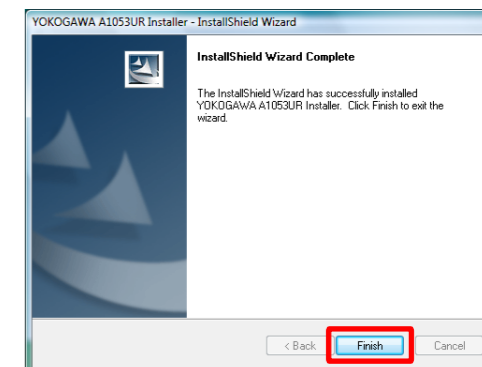
- The Windows Security screen appears. Click **Install**. (USB device driver)



- The Windows Security screen appears. Click **Install**. (COM port driver)



- When installation is complete, the Finish dialog box appears. Click **Finish**.



The dialog box closes. You have completed installing the driver software in Windows Vista.

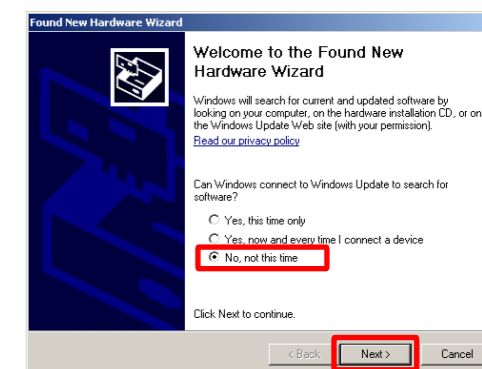
When you connect the dedicated cable to a USB port on your computer, the driver becomes available automatically.

For installation of USB converter driver software in Windows 7/Windows 8, follow the message given in each dialog box.

■ Installing USB Converter Driver Software in Windows XP

- Start Windows.
- Insert the CD of LL50A into the CD-ROM drive. The start-up screen appears automatically.
- Click **USB Driver Installation**.
- InstallShield Wizard screen appears. Click **Next**.
- Click **Install**.
- A message appears to warn that the software you are installing has not passed Windows Logo testing. Click **Continue Anyway**.
- The same warning message appears. Click **Continue Anyway**.
- When installation is complete, the Finish dialog box appears. Click **Finish**.
- Connect the connector of the dedicated cable to the USB communication port of a personal computer.

The Found New Hardware Wizard appears automatically. Select **No, not this time**. Click **Next**.



- Select **Install the software automatically (Recommended)**. Click **Next**.
- A message appears to warn that the software you are installing has not passed Windows Logo testing. Click **Continue Anyway**.
- Copying of the USB device driver for the dedicated cable begins. When installation is completed, a confirmation message appears. Click **Finish**.
- Installation of the virtual COM port driver begins continuously. Select **No, not this time**. Click **Next**.
- Select **Install the software automatically (Recommended)**. Click **Next**.
- A message appears to warn that the software you are installing has not passed Windows Logo testing. Click **Continue Anyway**.
- Copying of the virtual COM port driver begins. When installation is completed, a confirmation message appears. Click **Finish**.

You have completed installing the driver software in Windows XP.

■ Verifying Installation

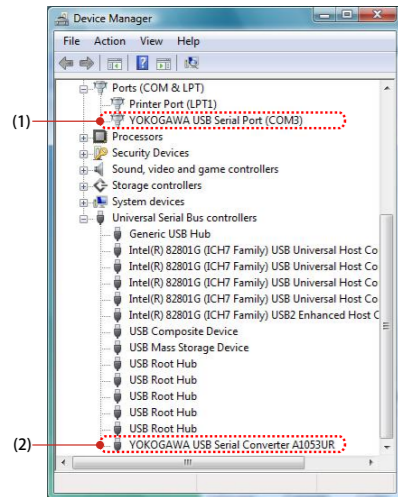
Operating procedures and screens in Windows Vista

- From the **Start** menu of Windows, select **Control Panel > Device manager**.

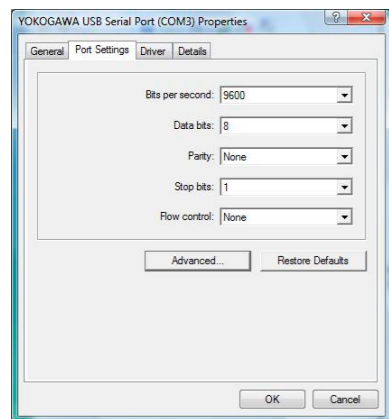
Note 1: From the **Start** menu of Windows, select **Control Panel > System and Maintenance > Device manager** if the control panel's display method is "Control Panel Home."

Note 2: In Windows XP, from the **Start** menu of Windows, select **Control Panel > System > Hardware > Device manager** and verify the steps 3 and 4."

- In Windows Vista, the User Account Control screen appears. Click **Continue**.
- Verify that the virtual COM port driver (1) "YOKOGAWA USB Serial Port (COMn)" is displayed under "Ports (COM & LPT)" as COM port and the USB device driver (2) "YOKOGAWA USB Serial Converter A1053UR" is displayed under "Universal Serial Bus controllers."



- The COM port number assigned to the dedicated cable can be verified by the port number displayed in (1) "YOKOGAWA USB Serial Port (COMn)" of Device Manager (see the step 3). To change the COM port number, double-click (1), select Port Settings tab of Properties screen and click **Advanced**. Change the COM port number in the Advanced Settings for COMn screen.



■ Uninstalling USB Converter Driver Software

Operating procedures in Windows Vista

CAUTION Unplug the dedicated cable if it is connected to a personal computer.

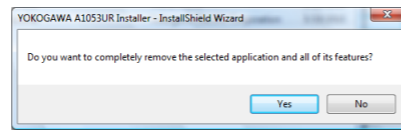
- Unplug the dedicated cable if it is connected to a personal computer.
- From the **Start** menu of Windows, select **Control Panel > Programs and Features**.

Note 1: From the **Start** menu of Windows, select **Control Panel > Uninstall a program** if the control panel's display method is "Control Panel Home."

Note2: In Windows XP, from the **Start** menu of Windows, select **Control Panel > Add or Remove Programs** and uninstall the driver software."

- Select **YOKOGAWA A1053UR Installer** and click **Uninstall**.
- In Windows Vista, the **User Account Control** screen appears. Click **Continue**.

- The Confirm Uninstall screen appears. Click **Yes**.



- The Uninstall Complete screen appears. Click **Finish**.

You have completed uninstalling the driver software.

4. Installing LL50A Parameter Setting Software



- Logon in Windows XP:**
 - Log on using the user name of Administrators group.
 - The program does not start normally if the user name not belonging to the Administrators group is used for logging on.
- In Windows Vista/Windows 7/Windows 8, install the software as an administrator.
- In Windows Vista/Windows 7/Windows 8, do not set LL50A user file save directory in Program Files folder. The LL50A will not work properly.
- Also if LL50A user file save directory is set in Program Files folder on Windows XP personal computer, do not upgrade its OS to Windows Vista/Windows 7/Windows 8.
- Before installing LL50A Setting Software, quit all running applications.
- Avoid entering just the drive as the installation location, such as C:\. Enter the full directory path.
- When .NET Framework 3.5 SP1 is not installed on Windows XP/Windows Vista/Windows 7/Windows 8 personal computer, .NET Framework 3.5 SP1 is installed to start LL50A.
- When reinstalling LL50A, uninstall the installed LL50A first, and then reinstall LL50A.

■ Installing LL50A Parameter Setting Software

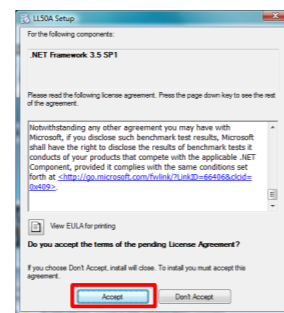
Operating procedures and screens in Windows Vista

- Start Windows.
- Insert the CD of LL50A into the CD-ROM drive. The start-up screen appears automatically.

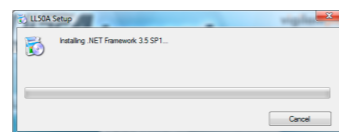


Note: If the start-up screen does not appear automatically and the AutoPlay screen appears, click **Run startup.exe** to display the start-up screen.

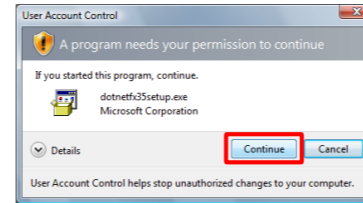
- Click **LL50A Installation**.
- When .NET Framework 3.5 SP1 is not installed on a personal computer, the license agreement for installing it appears. Click **Accept**.



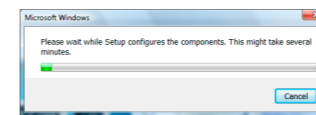
- The message "Copying required files" appears. And then the message "Installing .NET Framework 3.5 SP 1" appears.



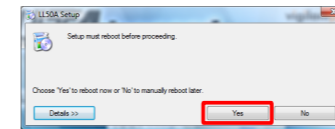
- The User Account Control screen appears. Click **Continue**.



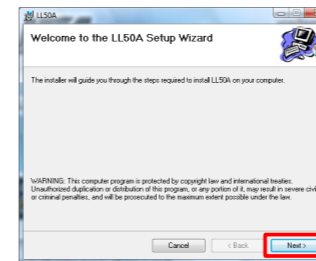
- The message "Please wait while Setup configures the components." appears.



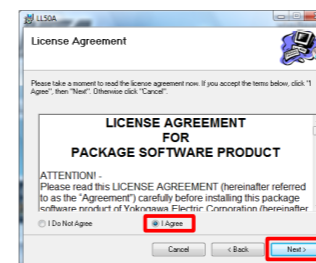
- The message "Setup must reboot before proceeding." may appear. Click **Yes**.



- Personal computer reboots. The LL50A Setup Wizard appears. Click **Next**.



- The License Agreement for Package Software Product appears. Read this license agreement carefully. If you agree, select **I Agree**. Click **Next**.



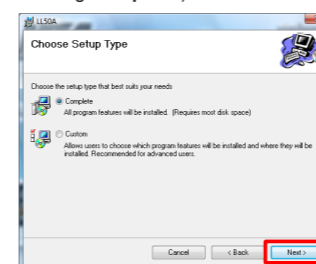
Note: If **I Do Not Agree** is selected, you cannot install the LL50A. Click **Cancel**.

- The Select Installation Folder screen appears. Select **Everyone or Just me**. Click **Next**.

Note

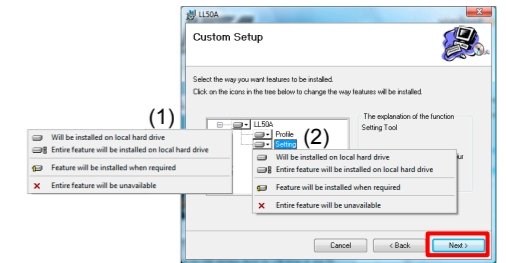
When you install the LL50A after "Everyone" is selected, even if other users log in, it is possible to start LL50A from the **Start menu > Programs menu**. When you install the LL50A after "Just me" is selected, even if other users log in, LL50A is not displayed in the **Programs**.

- The Setup Type screen appears. Select **Complete** and click **Next**. (We recommend choosing **Complete**.)



Note1: If you chose **Complete**, go to the procedure 13.

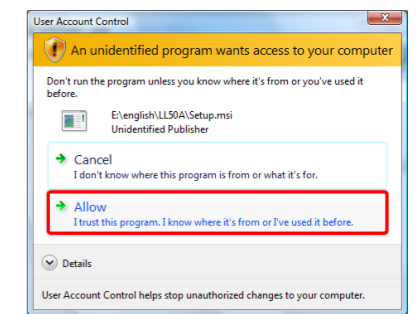
Note2: If you chose **Custom**, continue the procedure as follows:
Choose each installation method (*1) of **LL50A**, or **Profile** and **Setting**, then click **Next**.



- *1: **Profile** is to install Network Profile Tool.
Setting is to install Parameter Setting Tool.
- (1) On the **LL50A**, select **Entire feature will be installed on local hard drive**.
- (2) On the **Profile** and **Setting**, select either **Will be installed on local hard drive**, or **Entire feature will be unavailable**.

- The Confirm Installation screen appears. Click **Next**.

- The message "Installing LL50A" appears. The User Account Control screen appears. Click **Allow**.



- Installation begins. When installation is completed, a confirmation message appears. Click **Close**.

The following icons are appeared on the desktop.



You have completed installing the LL50A parameter setting software in Windows Vista.

For installation of LL50A Parameter Setting Software in Windows 7/Windows 8/Windows XP, follow the message given in each dialog box.

■ Verifying Installation of LL50A Parameter Setting Software

From the **Start** menu of Windows, point to **All Programs**, then **UTAdvanced** and verify that the **Setting Tool** and the **Network Profile Tool** is registered.

■ Uninstalling LL50A Parameter Setting Software

From the **Start** menu of Windows, select **Control Panel > Programs and Features** (*1) > **LL50A** and uninstall it.

In Windows Vista, the User Account Control screen appears. Click **Allow**. The LL50A is uninstalled.

*1: From the **Start** menu of Windows, select **Control Panel > Uninstall a program** if the control panel's display method is "Control Panel Home."
In Windows XP, **Add or Remove Programs**.

YOKOGAWA ◆

YOKOGAWA ELECTRIC CORPORATION
Network Solutions Business Division
2-9-32, Naka-cho Musashino-shi, Tokyo 180-8750 JAPAN

YOKOGAWA CORPORATION OF AMERICA
Head office and for product sales
2 Dart Road, Newnan, Georgia 30265, USA

YOKOGAWA EUROPE B.V.
Headquarters
Euroweg 2, 3825 HD Amersfoort, THE NETHERLANDS

www.yokogawa.com/ns